

The University of Michigan

News and Information Services

412 Maynard
Ann Arbor, Michigan
48109-1399

December 13, 2000 (12)
Contact: Diane Swanbrow
Phone: (734) 647-4416
E-mail: swanbrow@umich.edu
Web: www.monitoringthefuture.org

**"Ecstasy" use rises sharply among teens in 2000;
use of many other drugs stays steady,
but significant declines are reported for some.**

FOR RELEASE AT 10 A.M. EST, THURSDAY, DECEMBER 14, 2000.

EDITORS: Results of this survey are scheduled to be released at a news conference in Washington, D.C., to be held at the Department of Health and Human Services' Hubert H. Humphrey Building. Participants will include Secretary of Health and Human Services Donna E. Shalala, Director of the Office of National Drug Control Policy Barry R. McCaffrey, Director of the National Institute on Drug Abuse Alan I. Leshner, and the principal investigator of the Monitoring the Future study, Lloyd D. Johnston. For further information on the study, contact Johnston at (734) 763-5043.

ANN ARBOR---Use of the drug "ecstasy" (MDMA) by American adolescents continued to rise sharply this year, according to the latest results from the Monitoring the Future study, conducted at the University of Michigan Institute for Social Research (ISR). Reporting on the 26th national survey in the Monitoring the Future series, based on nationally representative surveys of some 45,000 students in grades 8, 10, and 12, ISR research scientists Lloyd D. Johnston, Jerald G. Bachman, and Patrick M. O'Malley also find that the use of several drugs has declined substantially in recent years. Inhalants, LSD, crystal methamphetamine ("ice"), and Rohypnol all are down from peak levels in the mid-90s. The proportion of students using each of these drugs sometime in the 12 months prior to the survey has declined by between a quarter and a third at all grade levels at which use was asked. In just the last year or two, crack cocaine and cocaine powder have also started to decline at all three grade-levels, though they have shown much smaller proportional declines so far.

(more)

During the past decade, the peak rates for using any illicit drug were reached among teens in 1996 or 1997, the U-M researchers report. Since then, this measure of overall use, which is largely driven by changes in the most widely used illicit drug, marijuana, has remained fairly level in the upper grades, but has shown a steady, gradual decline among eighth-graders.

According to Johnston, the study's principal investigator, this year the 12th-graders, who have generally tended to be the last to exhibit downturns in drug use, showed significant declines in their reported use of LSD, crack, and cocaine powder, all for the first time in recent years. This was also the first time in some years that the eighth-graders showed a significant decline in their use of heroin.

"One of the most encouraging findings from this year's survey," comments Johnston, "is the substantial and ongoing decline in teens' use of cigarettes and smokeless tobacco. The long-term implications of these changes for the health and longevity of this generation of American young people are enormous." [See accompanying news release on tobacco use for details.]

Despite progress on several fronts in recent years, the use of quite a few drugs remained essentially unchanged in the year 2000 at all three of the grade levels studied. These drugs include amphetamines, barbiturates, tranquilizers, hallucinogens other than LSD, opiates other than heroin, and alcohol.

Monitoring the Future, which is conducted at the U-M Institute for Social Research, has been supported since its inception 25 years ago through a series of investigator-initiated research grants made by the National Institute on Drug Abuse (NIDA), one of the National Institutes of Health in the U.S. Department of Health and Human Services. This year's survey results are based on nationally representative samples of 8th-, 10th-, and 12th-grade students attending public and private schools in the coterminous United States. In all, 45,200 students located in 435 schools completed the survey in the spring of 2000.

"Over the 25-year history of this study, the story has become more complicated by the continuing arrival of new substances onto the national scene," observes Johnston.

(more)

"There are now many more drugs out there for kids to use and for us to try to track. Further, since the use of most drugs moves somewhat independently in response to factors specific to each---such as price, reputation, and perceived dangers---it is possible to have the use of various drugs simultaneously moving in quite different directions. That clearly is the case this year."

While the use of some drugs is falling, and the use of a number of others is holding steady, a few are showing increases. Increasing this year are the use of ecstasy (MDMA) by students at all grade levels; the use of heroin by 12th-graders; and the use of steroids by 10th-graders.

Ecstasy

In 1999, Johnston, O'Malley, and Bachman reported a sharp increase in ecstasy use among 10th- and 12th-graders---an increase that continued this year. But the growing popularity of this drug is now evident among eighth-graders, as well. The proportion of eighth-graders reporting any use of ecstasy in the prior 12 months rose from 1.7 percent in 1999 to 3.1 percent in 2000. Among 10th-graders, the use of ecstasy rose from 4.4 percent to 5.4 percent, and among 12th-graders from 5.6 percent to 8.2 percent. Ecstasy is thus used by more American teen-agers today than is cocaine.

Young adults in their early 20s also have been showing a sharp increase in ecstasy use, according to results from another part of the Monitoring the Future study. Each year a sample of participants from previous graduating high school classes is followed up by mail. These samples are representative of 19- through 32-year-olds who are high school graduates, including college students. From 1994 through 1999, these follow-up surveys showed a sharp increase in ecstasy use in the 19- to 22-year-old age group, a slightly less sharp increase among 23- to 26-year-olds, but very little increase among those 27 or older. (Data from the 2000 follow-up survey are not yet available.)

"Thus the spread of ecstasy so far has been concentrated among those in their teens and early 20's---age groups most likely to be into the rave, club, and party scenes, where this so-called 'club drug' is frequently taken," says Johnston. Ecstasy use among American

(more)

college students, who comprise a fair proportion of the 19-to 22-year-old follow-up respondents, rose from 0.5 percent in 1994 to 5.5 percent in 1999 in terms of past-year use, according to the study. (About 1,400 college students respond each year.)

Ecstasy, which is a street name for methylenedioxymethamphetamine or MDMA, is a synthetic compound with both stimulant and mildly hallucinogenic properties. Taken in pill form, it has effects that often last for three to six hours. When combined with extended physical exertion like dancing, its use can lead to hyperthermia (severe overheating) and severe dehydration. It can even lead to serious increases in blood pressure, as well as stroke and heart attack. According to the National Institute on Drug Abuse, repeated use may result in lasting neurological changes in the brain. An additional danger lies in the fact that dealers may substitute other, even more dangerous, compounds, sometimes with fatal results.

"Young people have not yet come to see 'ecstasy' as a very dangerous drug," according to Johnston, "and until they do, it seems unlikely that we will see the situation turn around." To date, there has been only a very modest change in that direction, with the proportion of 12th-graders seeing a great risk in trying ecstasy rising, from 34 percent in 1997 to 38 percent in 2000.

Johnston states, "Often it is one of the newer drugs on the scene that is rising in popularity, because its adverse effects have yet to become widely recognized. Other drugs that might have fit the same mold in earlier years, like Rohypnol and PCP, came and went much more quickly, because their dangers were more obvious and word about them spread relatively fast. Cocaine represents a more parallel case to ecstasy and maybe the parallel might be instructive to young people today.

"In the late '70s and early '80s young peoples' recognition of the risks of cocaine developed extremely slowly. Cocaine use was rising, and then remained at peak levels for about nine years, because the dangers of cocaine did not come to be fully appreciated by young people until about 1986. By then a lot of them had gotten into serious trouble with the drug. Maybe this generation of young people could learn from that earlier generation's mistake by learning not to trust all those reassuring things they hear about the newest drug

(more)

on the block---in this case, ecstasy."

There has also been a dramatic increase in the perceived availability of ecstasy in recent years. While in 1989 only 22 percent of 12th-graders said they could get ecstasy fairly or very easily, if they wanted some, that proportion rose over the following decade to 40 percent by 1999, before again jumping sharply this year to 51 percent.

Because last year the increase in ecstasy use was largely concentrated in the Northeast, Johnston and his colleagues suggested that its use might well diffuse to other parts of the country this year. That seems to be exactly what has happened. In the Northeast there was little or no further increase this year in ecstasy use at any of the three grade levels, but some increase in all of the other three regions (North Central, South, and West) at all grade levels. There was a particularly large increase in ecstasy use this year among 12th-graders in the West, where 14 percent of the 12th-graders now report using ecstasy during the prior 12 months. That compares to 9 percent in the Northeast, and 6 percent in the South and North Central regions.

Heroin

While the use of heroin fell significantly among the 8th-graders this year, it simultaneously rose significantly among 12th-graders. Among eighth-graders, past-year use fell from 1.4 percent to 1.1 percent, reflecting a significant decline in their injecting heroin. Among the 12th-graders, past-year heroin use increased from 1.1 percent in 1999 to 1.5 percent in 2000. In this case, all of the change was due to more 12th-graders using by means *other* than injection

Steroids

The use of anabolic steroids rose sharply last year among both eighth- and 10th-graders. This year steroid use continued to rise among the 10th-graders, but held steady at grades 8 and 12. These drugs usually are not taken for their psychoactive effects but for their presumed influence on muscle development and healing. Their use is higher among

(more)

boys than among girls; and in the year 2000, the proportion of boys using them in the prior 12 months was 2.2 percent at eighth-grade, 3.6 percent at 10th-grade, and 2.5 percent at 12th-grade.

Marijuana

Marijuana remains the most widely used of the illicit drugs, with 16 percent of the eighth-graders, 32 percent of the 10th-graders, and 37 percent of the 12th-graders indicating some use in the prior 12-month period. Only among the eighth-graders has there been a statistically significant decline in use between the peak year (1996 for that grade) and 2000, and even there it has been a modest decline. Past year prevalence for eighth-graders declined from 18.3 percent to 15.6 percent between 1996 and 2000. Use peaked at 10th- and 12th-grades a year later (1997), but there has been very little decline since then.

More recent classes of eighth-graders have begun to see marijuana as dangerous to the user, and to become more disapproving of its use, which probably helps to explain the recent decline in use. [Figure 2.] The study's investigators have previously demonstrated that both perceived risk and disapproval can be important determinants of use.

"The younger teens are less likely to have an established pattern of drug-using behavior than older ones, of course," notes Johnston, "which probably makes them the most responsive to new influences in society. They were the first to show many of the upturns in substance use of various sorts early in the '90s, and the first to show many of the downturns later in the '90s." In fact, in addition to marijuana, the more recent downturns started first, and have been the most sustained, among the eighth-graders for crack cocaine, cocaine powder, tranquilizers, Rohypnol, smokeless tobacco, and cigarettes.

Johnston adds, "The fact that these younger cohorts of teen-agers are starting to get the message about many of these drugs is certainly encouraging, but, unfortunately, they haven't yet gotten the message about all of them."

(more)

Alcohol

Alcohol use by teens has remained fairly stable in recent years. Nearly a quarter (22 percent) of the eighth-graders report having taken an alcoholic beverage in the last 30 days, and exactly half of the 12th-graders (50 percent) report having done so. One in every 12 eighth-graders (8.3 percent) reports being drunk at least once in the past 30 days, as do a third of the 12th-graders (32.3 percent). "These rates are high by most people's standards," comments Johnston, "but about where they have been over the past several years."

#####

The annual surveys of high school seniors in the Monitoring the Future study were begun in 1975, and the annual surveys of eighth- and 10th grade students were added, starting in 1991. At each grade level students are drawn to be representative of all students in public and private schools in the coterminous United States. They complete self-administered, optically-scanned questionnaires given to them in their classrooms in the spring of the year by U-M personnel. In 2000 the sample sizes for eighth-, 10th-, and 12th-grades, respectively, were 17,311, 14,576, and 13,286. In all about 45,200 students in 435 schools participated in the study.

The results presented here will be published soon in monograph form by the National Institute on Drug Abuse as "Monitoring the Future national results on adolescent drug use: Overview of key findings, 2000," by Lloyd D. Johnston, Patrick M. O'Malley, and Jerald G. Bachman.

#####

[00.drug]

TABLE 1**Trends in Lifetime Prevalence of Use of Various Drugs for Eighth, Tenth, and Twelfth Graders**

(Entries are percentages)

	Lifetime										'99-'00 change
	1991	1992	1993	1994	1995	1996	1997	1998	1999	2000	
Any Illicit Drug ^a	18.7	20.6	22.5	25.7	28.5	31.2	29.4	29.0	28.3	26.8	-1.5
8th Grade	18.7	20.6	22.5	25.7	28.5	31.2	29.4	29.0	28.3	26.8	-1.5
10th Grade	30.6	29.8	32.8	37.4	40.9	45.4	47.3	44.9	46.2	45.6	-0.6
12th Grade	44.1	40.7	42.9	45.6	48.4	50.8	54.3	54.1	54.7	54.0	-0.7
Any Illicit Drug Other Than Marijuana ^a	14.3	15.6	16.8	17.5	18.8	19.2	17.7	16.9	16.3	15.8	-0.6
8th Grade	14.3	15.6	16.8	17.5	18.8	19.2	17.7	16.9	16.3	15.8	-0.6
10th Grade	19.1	19.2	20.9	21.7	24.3	25.5	25.0	23.6	24.0	23.1	-0.9
12th Grade	26.9	25.1	26.7	27.6	28.1	28.5	30.0	29.4	29.4	29.0	-0.3
Any Illicit Drug Including Inhalants ^{a,b}	28.5	29.6	32.3	35.1	38.1	39.4	38.1	37.8	37.2	35.1	-2.0
8th Grade	28.5	29.6	32.3	35.1	38.1	39.4	38.1	37.8	37.2	35.1	-2.0
10th Grade	36.1	36.2	38.7	42.7	45.9	49.8	50.9	49.3	49.9	49.3	-0.6
12th Grade	47.6	44.4	46.6	49.1	51.5	53.5	56.3	56.1	56.3	57.0	+0.8
Marijuana/Hashish	10.2	11.2	12.6	16.7	19.9	23.1	22.6	22.2	22.0	20.3	-1.8
8th Grade	10.2	11.2	12.6	16.7	19.9	23.1	22.6	22.2	22.0	20.3	-1.8
10th Grade	23.4	21.4	24.4	30.4	34.1	39.8	42.3	39.6	40.9	40.3	-0.7
12th Grade	36.7	32.6	35.3	38.2	41.7	44.9	49.6	49.1	49.7	48.8	-0.9
Inhalants ^{b,c}	17.6	17.4	19.4	19.9	21.6	21.2	21.0	20.5	19.7	17.9	-1.8
8th Grade	17.6	17.4	19.4	19.9	21.6	21.2	21.0	20.5	19.7	17.9	-1.8
10th Grade	15.7	16.6	17.5	18.0	19.0	19.3	18.3	18.3	17.0	16.6	-0.4
12th Grade	17.6	16.6	17.4	17.7	17.4	16.6	16.1	15.2	15.4	14.2	-1.2
Nitrites ^d	—	—	—	—	—	—	—	—	—	—	—
8th Grade	—	—	—	—	—	—	—	—	—	—	—
10th Grade	—	—	—	—	—	—	—	—	—	—	—
12th Grade	1.6	1.5	1.4	1.7	1.5	1.8	2.0	2.7	1.7	0.8	-0.8
Hallucinogens ^e	3.2	3.8	3.9	4.3	5.2	5.9	5.4	4.9	4.8	4.6	-0.1
8th Grade	3.2	3.8	3.9	4.3	5.2	5.9	5.4	4.9	4.8	4.6	-0.1
10th Grade	6.1	6.4	6.8	8.1	9.3	10.5	10.5	9.8	9.7	8.9	-0.8
12th Grade	9.6	9.2	10.9	11.4	12.7	14.0	15.1	14.1	13.7	13.0	-0.7
LSD	2.7	3.2	3.5	3.7	4.4	5.1	4.7	4.1	4.1	3.9	-0.2
8th Grade	2.7	3.2	3.5	3.7	4.4	5.1	4.7	4.1	4.1	3.9	-0.2
10th Grade	5.6	5.8	6.2	7.2	8.4	9.4	9.5	8.5	8.5	7.6	-1.0
12th Grade	8.8	8.6	10.3	10.5	11.7	12.6	13.6	12.6	12.2	11.1	-1.1
Hallucinogens Other Than LSD	1.4	1.7	1.7	2.2	2.5	3.0	2.6	2.5	2.4	2.3	-0.1
8th Grade	1.4	1.7	1.7	2.2	2.5	3.0	2.6	2.5	2.4	2.3	-0.1
10th Grade	2.2	2.5	2.8	3.8	3.9	4.7	4.8	5.0	4.7	4.8	+0.1
12th Grade	3.7	3.3	3.9	4.9	5.4	6.8	7.5	7.1	6.7	6.9	+0.2
PCP ^d	—	—	—	—	—	—	—	—	—	—	—
8th Grade	—	—	—	—	—	—	—	—	—	—	—
10th Grade	—	—	—	—	—	—	—	—	—	—	—
12th Grade	2.9	2.4	2.9	2.8	2.7	4.0	3.9	3.9	3.4	3.4	-0.1

(Table continued on next page)

TABLE 1 (cont.)

Trends in Lifetime Prevalence of Use of Various Drugs for Eighth, Tenth, and Twelfth Graders

	<u>Lifetime</u>										'99-'00 change
	<u>1991</u>	<u>1992</u>	<u>1993</u>	<u>1994</u>	<u>1995</u>	<u>1996</u>	<u>1997</u>	<u>1998</u>	<u>1999</u>	<u>2000</u>	
MDMA (Ecstasy) ^d											
8th Grade	—	—	—	—	—	3.4	3.2	2.7	2.7	4.3	+1.6ss
10th Grade	—	—	—	—	—	5.6	5.7	5.1	6.0	7.3	+1.3
12th Grade	—	—	—	—	—	6.1	6.9	5.8	8.0	11.0	+3.0s
Cocaine											
8th Grade	2.3	2.9	2.9	3.6	4.2	4.5	4.4	4.6	4.7	4.5	-0.2
10th Grade	4.1	3.3	3.6	4.3	5.0	6.5	7.1	7.2	7.7	6.9	-0.9
12th Grade	7.8	6.1	6.1	5.9	6.0	7.1	8.7	9.3	9.8	8.6	-1.2
Crack											
8th Grade	1.3	1.6	1.7	2.4	2.7	2.9	2.7	3.2	3.1	3.1	0.0
10th Grade	1.7	1.5	1.8	2.1	2.8	3.3	3.6	3.9	4.0	3.7	-0.3
12th Grade	3.1	2.6	2.6	3.0	3.0	3.3	3.9	4.4	4.6	3.9	-0.7s
Other Cocaine ^e											
8th Grade	2.0	2.4	2.4	3.0	3.4	3.8	3.5	3.7	3.8	3.5	-0.3
10th Grade	3.8	3.0	3.3	3.8	4.4	5.5	6.1	6.4	6.8	6.0	-0.8
12th Grade	7.0	5.3	5.4	5.2	5.1	6.4	8.2	8.4	8.8	7.7	-1.1
Heroin ^f											
8th Grade	1.2	1.4	1.4	2.0	2.3	2.4	2.1	2.3	2.3	1.9	-0.4
10th Grade	1.2	1.2	1.3	1.5	1.7	2.1	2.1	2.3	2.3	2.2	-0.1
12th Grade	0.9	1.2	1.1	1.2	1.6	1.8	2.1	2.0	2.0	2.4	+0.4
With a needle ^g											
8th Grade	—	—	—	—	1.5	1.6	1.3	1.4	1.6	1.1	-0.5ss
10th Grade	—	—	—	—	1.0	1.1	1.1	1.2	1.3	1.0	-0.2
12th Grade	—	—	—	—	0.7	0.8	0.9	0.8	0.9	0.8	-0.1
Without a needle ^g											
8th Grade	—	—	—	—	1.5	1.6	1.4	1.5	1.4	1.3	-0.1
10th Grade	—	—	—	—	1.1	1.7	1.7	1.7	1.6	1.7	0.0
12th Grade	—	—	—	—	1.4	1.7	2.1	1.6	1.8	2.4	+0.6
Other Narcotics ^h											
8th Grade	—	—	—	—	—	—	—	—	—	—	—
10th Grade	—	—	—	—	—	—	—	—	—	—	—
12th Grade	6.6	6.1	6.4	6.6	7.2	8.2	9.7	9.8	10.2	10.6	+0.4
Amphetamines ^h											
8th Grade	10.5	10.8	11.8	12.3	13.1	13.5	12.3	11.3	10.7	9.9	-0.8
10th Grade	13.2	13.1	14.9	15.1	17.4	17.7	17.0	16.0	15.7	15.7	+0.1
12th Grade	15.4	13.9	15.1	15.7	15.3	15.3	16.5	16.4	16.3	15.6	-0.7
Methamphetamine ^{ij}											
8th Grade	—	—	—	—	—	—	—	—	4.5	4.2	-0.3
10th Grade	—	—	—	—	—	—	—	—	7.3	6.9	-0.5
12th Grade	—	—	—	—	—	—	—	—	8.2	7.9	-0.3

(Table continued on next page)

TABLE 1 (cont.)

Trends in Lifetime Prevalence of Use of Various Drugs for Eighth, Tenth, and Twelfth Graders

	Lifetime										'99-'00 change	
	1991	1992	1993	1994	1995	1996	1997	1998	1999	2000		
Ice ^j												
8th Grade	—	—	—	—	—	—	—	—	—	—	—	—
10th Grade	—	—	—	—	—	—	—	—	—	—	—	—
12th Grade	3.3	2.9	3.1	3.4	3.9	4.4	4.4	5.3	4.8	4.0	-0.8	
Barbiturates ^h												
8th Grade	—	—	—	—	—	—	—	—	—	—	—	—
10th Grade	—	—	—	—	—	—	—	—	—	—	—	—
12th Grade	6.2	5.5	6.3	7.0	7.4	7.6	8.1	8.7	8.9	9.2	+0.2	
Tranquilizers ^h												
8th Grade	3.8	4.1	4.4	4.6	4.5	5.3	4.8	4.6	4.4	4.4	0.0	
10th Grade	5.8	5.9	5.7	5.4	6.0	7.1	7.3	7.8	7.9	8.0	+0.1	
12th Grade	7.2	6.0	6.4	6.6	7.1	7.2	7.8	8.5	9.3	8.9	-0.5	
Rohypnol ^{d,k}												
8th Grade	—	—	—	—	—	1.5	1.1	1.4	1.3	1.0	-0.3	
10th Grade	—	—	—	—	—	1.5	1.7	2.0	1.8	1.3	-0.5	
12th Grade	—	—	—	—	—	1.2	1.8	3.0	2.0	1.5	-0.6	
Alcohol ^l												
Any use												
8th Grade	70.1	69.3	67.1	—	—	—	—	—	—	—	—	—
10th Grade	83.8	82.3	80.8	55.7	55.8	54.5	55.3	53.8	52.5	52.1	51.7	-0.4
12th Grade	88.0	87.5	87.0	71.6	71.1	70.5	71.8	72.0	69.8	70.6	71.4	+0.9
12th Grade			80.0	80.4	80.7	79.2	81.7	81.4	80.0	80.3	+0.2	
Been Drunk ^l												
8th Grade	26.7	26.8	26.4	25.9	25.3	26.8	25.2	24.8	24.8	25.1	+0.3	
10th Grade	50.0	47.7	47.9	47.2	46.9	48.5	49.4	46.7	48.9	49.3	+0.4	
12th Grade	65.4	63.4	62.5	62.9	63.2	61.8	64.2	62.4	62.3	62.3	0.0	
Cigarettes												
Any use												
8th Grade	44.0	45.2	45.3	46.1	46.4	49.2	47.3	45.7	44.1	40.5	-3.6	sss
10th Grade	55.1	53.5	56.3	56.9	57.6	61.2	60.2	57.7	57.6	55.1	-2.5	ss
12th Grade	63.1	61.8	61.9	62.0	64.2	63.5	65.4	65.3	64.6	62.5	-2.1	
Smokeless Tobacco ^d												
8th Grade	22.2	20.7	18.7	19.9	20.0	20.4	16.8	15.0	14.4	12.8	-1.6	
10th Grade	28.2	26.6	28.1	29.2	27.6	27.4	26.3	22.7	20.4	19.1	-1.3	
12th Grade	—	32.4	31.0	30.7	30.9	29.8	25.3	26.2	23.4	23.1	-0.4	
Steroids ^l												
8th Grade	1.9	1.7	1.6	2.0	2.0	1.8	1.8	2.3	2.7	3.0	+0.3	
10th Grade	1.8	1.7	1.7	1.8	2.0	1.8	2.0	2.0	2.7	3.5	+0.8	ss
12th Grade	2.1	2.1	2.0	2.4	2.3	1.9	2.4	2.7	2.9	2.5	-0.4	

(Table continued on next page)

TABLE 2
Trends in Annual and 30-Day Prevalence of Use of Various Drugs
for Eighth, Tenth, and Twelfth Graders

	<u>Annual</u>											<u>30-Day</u>										
	1991	1992	1993	1994	1995	1996	1997	1998	1999	2000	'99-'00 change	1991	1992	1993	1994	1995	1996	1997	1998	1999	2000	'99-'00 change
Any Illicit Drug ^a																						
8th Grade	11.3	12.9	15.1	18.5	21.4	23.6	22.1	21.0	20.5	19.5	-1.1	5.7	6.8	8.4	10.9	12.4	14.6	12.9	12.1	12.2	11.9	-0.4
10th Grade	21.4	20.4	24.7	30.0	33.3	37.5	38.5	35.0	35.9	36.4	+0.5	11.6	11.0	14.0	18.5	20.2	23.2	23.0	21.5	22.1	22.5	+0.4
12th Grade	29.4	27.1	31.0	35.8	39.0	40.2	42.4	41.4	42.1	40.9	-1.2	16.4	14.4	18.3	21.9	23.8	24.6	26.2	25.6	25.9	24.9	-1.0
Any Illicit Drug Other Than Marijuana ^a																						
8th Grade	8.4	9.3	10.4	11.3	12.6	13.1	11.8	11.0	10.5	10.2	-0.4	3.8	4.7	5.3	5.6	6.5	6.9	6.0	5.5	5.5	5.6	+0.1
10th Grade	12.2	12.3	13.9	15.2	17.5	18.4	18.2	16.6	16.7	16.7	0.0	5.5	5.7	6.5	7.1	8.9	8.9	8.8	8.6	8.6	8.5	-0.1
12th Grade	16.2	14.9	17.1	18.0	19.4	19.8	20.7	20.2	20.7	20.4	-0.3	7.1	6.3	7.9	8.8	10.0	9.5	10.7	10.7	10.4	10.4	0.0
Any Illicit Drug Including Inhalants ^{a,b}																						
8th Grade	16.7	18.2	21.1	24.2	27.1	28.7	27.2	26.2	25.3	24.0	-1.4	8.8	10.0	12.0	14.3	16.1	17.5	16.0	14.9	15.1	14.4	-0.7
10th Grade	23.9	23.5	27.4	32.5	35.6	39.6	40.3	37.1	37.7	38.0	+0.3	13.1	12.6	15.5	20.0	21.6	24.5	24.1	22.5	23.1	23.6	+0.5
12th Grade	31.2	28.8	32.5	37.6	40.2	41.9	43.3	42.4	42.8	42.5	-0.3	17.8	15.5	19.3	23.0	24.8	25.5	26.9	26.6	26.4	26.4	0.0
Marijuana/Hashish																						
8th Grade	6.2	7.2	9.2	13.0	15.8	18.3	17.7	16.9	16.5	15.6	-0.9	3.2	3.7	5.1	7.8	9.1	11.3	10.2	9.7	9.7	9.1	-0.6
10th Grade	16.5	15.2	19.2	25.2	28.7	33.6	34.8	31.1	32.1	32.2	+0.2	8.7	8.1	10.9	15.8	17.2	20.4	20.5	18.7	19.4	19.7	+0.3
12th Grade	23.9	21.9	26.0	30.7	34.7	35.8	38.5	37.5	37.8	36.5	-1.3	13.8	11.9	15.5	19.0	21.2	21.9	23.7	22.8	23.1	21.6	-1.6
Inhalants ^{b,c}																						
8th Grade	9.0	9.5	11.0	11.7	12.8	12.2	11.8	11.1	10.3	9.4	-0.9	4.4	4.7	5.4	5.6	6.1	5.8	5.6	4.8	5.0	4.5	-0.5
10th Grade	7.1	7.5	8.4	9.1	9.6	9.5	8.7	8.0	7.2	7.3	+0.1	2.7	2.7	3.3	3.6	3.5	3.3	3.0	2.9	2.6	2.6	0.0
12th Grade	6.6	6.2	7.0	7.7	8.0	7.6	6.7	6.2	5.6	5.9	+0.3	2.4	2.3	2.5	2.7	3.2	2.5	2.5	2.3	2.0	2.2	+0.2
Nitrites ^d																						
8th Grade	—	—	—	—	—	—	—	—	—	—	—	—	—	—	—	—	—	—	—	—	—	—
10th Grade	—	—	—	—	—	—	—	—	—	—	—	—	—	—	—	—	—	—	—	—	—	—
12th Grade	0.9	0.5	0.9	1.1	1.1	1.6	1.2	1.4	0.9	0.6	-0.3	0.4	0.3	0.6	0.4	0.4	0.7	0.7	1.0	0.4	0.3	-0.1
Hallucinogens ^c																						
8th Grade	1.9	2.5	2.6	2.7	3.6	4.1	3.7	3.4	2.9	2.8	0.0	0.8	1.1	1.2	1.3	1.7	1.9	1.8	1.4	1.3	1.2	-0.1
10th Grade	4.0	4.3	4.7	5.8	7.2	7.8	7.6	6.9	6.9	6.1	-0.9	1.6	1.8	1.9	2.4	3.3	2.8	3.3	3.2	2.9	2.3	-0.6s
12th Grade	5.8	5.9	7.4	7.6	9.3	10.1	9.8	9.0	9.4	8.1	-1.3s	2.2	2.1	2.7	3.1	4.4	3.5	3.9	3.8	3.5	2.6	-0.9ss
LSD																						
8th Grade	1.7	2.1	2.3	2.4	3.2	3.5	3.2	2.8	2.4	2.4	+0.1	0.6	0.9	1.0	1.1	1.4	1.5	1.5	1.1	1.1	1.0	-0.1
10th Grade	3.7	4.0	4.2	5.2	6.5	6.9	6.7	5.9	6.0	5.1	-0.9	1.5	1.6	1.6	2.0	3.0	2.4	2.8	2.7	2.3	1.6	-0.7s
12th Grade	5.2	5.6	6.8	6.9	8.4	8.8	8.4	7.6	8.1	6.6	-1.5s	1.9	2.0	2.4	2.6	4.0	2.5	3.1	3.2	2.7	1.6	-1.2sss
Hallucinogens Other Than LSD																						
8th Grade	0.7	1.1	1.0	1.3	1.7	2.0	1.8	1.6	1.5	1.4	-0.1	0.3	0.4	0.5	0.7	0.8	0.9	0.7	0.7	0.6	0.6	+0.1
10th Grade	1.3	1.4	1.9	2.4	2.8	3.3	3.3	3.4	3.2	3.1	-0.1	0.4	0.5	0.7	1.0	1.0	1.0	1.2	1.4	1.2	1.2	0.0
12th Grade	2.0	1.7	2.2	3.1	3.8	4.4	4.6	4.6	4.3	4.4	+0.1	0.7	0.5	0.8	1.2	1.3	1.6	1.7	1.6	1.6	1.7	+0.1
PCP ^d																						
8th Grade	—	—	—	—	—	—	—	—	—	—	—	—	—	—	—	—	—	—	—	—	—	—
10th Grade	—	—	—	—	—	—	—	—	—	—	—	—	—	—	—	—	—	—	—	—	—	—
12th Grade	1.4	1.4	1.4	1.6	1.8	2.6	2.3	2.1	1.8	2.3	+0.5	0.5	0.6	1.0	0.7	0.6	1.3	0.7	1.0	0.8	0.9	+0.1

(Table continued on next page; see Table 1 for relevant footnotes)

TABLE 2 (cont.)
Trends in Annual and 30-Day Prevalence of Use of Various Drugs
for Eighth, Tenth, and Twelfth Graders

	Annual											30-Day										
	1991	1992	1993	1994	1995	1996	1997	1998	1999	2000	'99-'00 change	1991	1992	1993	1994	1995	1996	1997	1998	1999	2000	'99-'00 change
MDMA (Ecstasy) ^d																						
8th Grade	—	—	—	—	—	2.3	2.3	1.8	1.7	3.1	+1.4sss	—	—	—	—	—	1.0	1.0	0.9	0.8	1.4	+0.7ss
10th Grade	—	—	—	—	—	4.6	3.9	3.3	4.4	5.4	+1.0	—	—	—	—	—	1.8	1.3	1.3	1.8	2.6	+0.8s
12th Grade	—	—	—	—	—	4.6	4.0	3.6	5.6	8.2	+2.6ss	—	—	—	—	—	2.0	1.6	1.5	2.5	3.6	+1.1
Cocaine																						
8th Grade	1.1	1.5	1.7	2.1	2.6	3.0	2.8	3.1	2.7	2.6	-0.1	0.5	0.7	0.7	1.0	1.2	1.3	1.1	1.4	1.3	1.2	-0.1
10th Grade	2.2	1.9	2.1	2.8	3.5	4.2	4.7	4.7	4.9	4.4	-0.5	0.7	0.7	0.9	1.2	1.7	1.7	2.0	2.1	1.8	1.8	-0.1
12th Grade	3.5	3.1	3.3	3.6	4.0	4.9	5.5	5.7	6.2	5.0	-1.3s	1.4	1.3	1.3	1.5	1.8	2.0	2.3	2.4	2.6	2.1	-0.5
Crack																						
8th Grade	0.7	0.9	1.0	1.3	1.6	1.8	1.7	2.1	1.8	1.8	0.0	0.3	0.5	0.4	0.7	0.7	0.8	0.7	0.9	0.8	0.8	-0.1
10th Grade	0.9	0.9	1.1	1.4	1.8	2.1	2.2	2.5	2.4	2.2	-0.2	0.3	0.4	0.5	0.6	0.9	0.8	0.9	1.1	0.8	0.9	+0.1
12th Grade	1.5	1.5	1.5	1.9	2.1	2.1	2.4	2.5	2.7	2.2	-0.5s	0.7	0.6	0.7	0.8	1.0	1.0	0.9	1.0	1.1	1.0	-0.1
Other Cocaine ^e																						
8th Grade	1.0	1.2	1.3	1.7	2.1	2.5	2.2	2.4	2.3	1.9	-0.4	0.5	0.5	0.6	0.9	1.0	1.0	0.8	1.0	1.1	0.9	-0.2
10th Grade	2.1	1.7	1.8	2.4	3.0	3.5	4.1	4.0	4.4	3.8	-0.6	0.6	0.6	0.7	1.0	1.4	1.3	1.6	1.8	1.6	1.6	0.0
12th Grade	3.2	2.6	2.9	3.0	3.4	4.2	5.0	4.9	5.8	4.5	-1.4s	1.2	1.0	1.2	1.3	1.3	1.6	2.0	2.0	2.5	1.7	-0.7s
Heroin ^f																						
8th Grade	0.7	0.7	0.7	1.2	1.4	1.6	1.3	1.3	1.4	1.1	-0.3s	0.3	0.4	0.4	0.6	0.6	0.7	0.6	0.6	0.6	0.5	-0.2
10th Grade	0.5	0.6	0.7	0.9	1.1	1.2	1.4	1.4	1.4	1.4	0.0	0.2	0.2	0.3	0.4	0.6	0.5	0.6	0.7	0.7	0.5	-0.2
12th Grade	0.4	0.6	0.5	0.6	1.1	1.0	1.2	1.0	1.1	1.5	+0.4s	0.2	0.3	0.2	0.3	0.6	0.5	0.5	0.5	0.5	0.7	+0.2
With a needle ^g																						
8th Grade	—	—	—	—	0.9	1.0	0.8	0.8	0.9	0.6	-0.3ss	—	—	—	—	0.4	0.5	0.4	0.5	0.4	0.3	-0.1
10th Grade	—	—	—	—	0.6	0.7	0.7	0.8	0.6	0.5	-0.1	—	—	—	—	0.3	0.3	0.3	0.4	0.3	0.3	-0.1
12th Grade	—	—	—	—	0.5	0.5	0.5	0.4	0.4	0.4	0.0	—	—	—	—	0.3	0.4	0.3	0.2	0.2	0.2	0.0
Without a needle ^g																						
8th Grade	—	—	—	—	0.8	1.0	0.8	0.8	0.9	0.7	-0.2	—	—	—	—	0.3	0.4	0.4	0.3	0.4	0.3	-0.1
10th Grade	—	—	—	—	0.8	0.9	1.1	1.0	1.1	1.1	0.0	—	—	—	—	0.3	0.3	0.4	0.5	0.5	0.4	-0.2
12th Grade	—	—	—	—	1.0	1.0	1.2	0.8	1.0	1.6	+0.6ss	—	—	—	—	0.6	0.4	0.6	0.4	0.4	0.7	+0.3
Other Narcotics ^h																						
8th Grade	—	—	—	—	—	—	—	—	—	—	—	—	—	—	—	—	—	—	—	—	—	—
10th Grade	—	—	—	—	—	—	—	—	—	—	—	—	—	—	—	—	—	—	—	—	—	—
12th Grade	3.5	3.3	3.6	3.8	4.7	5.4	6.2	6.3	6.7	7.0	+0.3	1.1	1.2	1.3	1.5	1.8	2.0	2.3	2.4	2.6	2.9	+0.3
Amphetamines ^h																						
8th Grade	6.2	6.5	7.2	7.9	8.7	9.1	8.1	7.2	6.9	6.5	-0.4	2.6	3.3	3.6	3.6	4.2	4.6	3.8	3.3	3.4	3.4	+0.1
10th Grade	8.2	8.2	9.6	10.2	11.9	12.4	12.1	10.7	10.4	11.1	+0.7	3.3	3.6	4.3	4.5	5.3	5.5	5.1	5.1	5.0	5.4	+0.5
12th Grade	8.2	7.1	8.4	9.4	9.3	9.5	10.2	10.1	10.2	10.5	+0.3	3.2	2.8	3.7	4.0	4.0	4.1	4.8	4.6	4.5	5.0	+0.5
Methamphetamine ^{h,j}																						
8th Grade	—	—	—	—	—	—	—	—	3.2	2.5	-0.7	—	—	—	—	—	—	—	—	1.1	0.8	-0.3
10th Grade	—	—	—	—	—	—	—	—	4.6	4.0	-0.6	—	—	—	—	—	—	—	—	1.8	2.0	+0.2
12th Grade	—	—	—	—	—	—	—	—	4.7	4.3	-0.3	—	—	—	—	—	—	—	—	1.7	1.9	+0.2

(Table continued on next page; see Table 1 for relevant footnotes)

TABLE 2 (cont.)
Trends in Annual and 30-Day Prevalence of Use of Various Drugs
for Eighth, Tenth, and Twelfth Graders

	Annual											30-Day												
	1991	1992	1993	1994	1995	1996	1997	1998	1999	2000	'99-'00 change	1991	1992	1993	1994	1995	1996	1997	1998	1999	2000	'99-'00 change		
Ice ^j																								
8th Grade	—	—	—	—	—	—	—	—	—	—	—	—	—	—	—	—	—	—	—	—	—	—		
10th Grade	—	—	—	—	—	—	—	—	—	—	—	—	—	—	—	—	—	—	—	—	—	—		
12th Grade	1.4	1.3	1.7	1.8	2.4	2.8	2.3	3.0	1.9	2.2	+0.3	0.6	0.5	0.6	0.7	1.1	1.1	0.8	1.2	0.8	1.0	+0.2		
Barbiturates ^h																								
8th Grade	—	—	—	—	—	—	—	—	—	—	—	—	—	—	—	—	—	—	—	—	—	—		
10th Grade	—	—	—	—	—	—	—	—	—	—	—	—	—	—	—	—	—	—	—	—	—	—		
12th Grade	3.4	2.8	3.4	4.1	4.7	4.9	5.1	5.5	5.8	6.2	+0.4	1.4	1.1	1.3	1.7	2.2	2.1	2.1	2.6	2.6	3.0	+0.4		
Tranquilizers ^h																								
8th Grade	1.8	2.0	2.1	2.4	2.7	3.3	2.9	2.6	2.5	2.6	+0.2	0.8	0.8	0.9	1.1	1.2	1.5	1.2	1.2	1.1	1.4	+0.3		
10th Grade	3.2	3.5	3.3	3.3	4.0	4.6	4.9	5.1	5.4	5.6	+0.2	1.2	1.5	1.1	1.5	1.7	1.7	2.2	2.2	2.2	2.5	+0.4		
12th Grade	3.6	2.8	3.5	3.7	4.4	4.6	4.7	5.5	5.8	5.7	-0.1	1.4	1.0	1.2	1.4	1.8	2.0	1.8	2.4	2.5	2.6	+0.1		
Rohypnol ^{d,k}																								
8th Grade	—	—	—	—	—	1.0	0.8	0.8	0.5	0.5	+0.1	—	—	—	—	—	0.5	0.3	0.4	0.3	0.3	0.0		
10th Grade	—	—	—	—	—	1.1	1.3	1.2	1.0	0.8	-0.3	—	—	—	—	—	0.5	0.5	0.4	0.5	0.4	-0.2		
12th Grade	—	—	—	—	—	1.1	1.2	1.4	1.0	0.8	-0.2	—	—	—	—	—	0.5	0.3	0.3	0.3	0.4	+0.1		
Alcohol ^l																								
Any use																								
8th Grade	54.0	53.7	51.6	—	—	—	—	—	—	—	—	25.1	26.1	26.2	—	—	—	—	—	—	—	—		
10th Grade	72.3	70.2	69.3	45.4	46.8	45.3	46.5	45.5	43.7	43.5	43.1	-0.4	42.8	39.9	41.5	24.3	25.5	24.6	26.2	24.5	23.0	24.0	22.4	-1.7
12th Grade	77.7	76.8	76.0	63.4	63.9	63.5	65.0	65.2	62.7	63.7	65.3	+1.6	54.0	51.3	51.0	38.2	39.2	38.8	40.4	40.1	38.8	40.0	41.0	+0.9
				72.7	73.0	73.7	72.5	74.8	74.3	73.8	73.2	-0.6				48.6	50.1	51.3	50.8	52.7	52.0	51.0	50.0	-1.0
Been Drunk ^l																								
8th Grade	17.5	18.3	18.2	18.2	18.4	19.8	18.4	17.9	18.5	18.5	0.0	7.6	7.5	7.8	8.7	8.3	9.6	8.2	8.4	9.4	8.3	-1.1		
10th Grade	40.1	37.0	37.8	38.0	38.5	40.1	40.7	38.3	40.9	41.6	+0.7	20.5	18.1	19.8	20.3	20.8	21.3	22.4	21.1	22.5	23.5	+1.0		
12th Grade	52.7	50.3	49.6	51.7	52.5	51.9	53.2	52.0	53.2	51.8	-1.4	31.6	29.9	28.9	30.8	33.2	31.3	34.2	32.9	32.9	32.3	-0.6		
Cigarettes																								
Any use																								
8th Grade	—	—	—	—	—	—	—	—	—	—	—	14.3	15.5	16.7	18.6	19.1	21.0	19.4	19.1	17.5	14.6	-2.8sss		
10th Grade	—	—	—	—	—	—	—	—	—	—	—	20.8	21.5	24.7	25.4	27.9	30.4	29.8	27.6	25.7	23.9	-1.8		
12th Grade	—	—	—	—	—	—	—	—	—	—	—	28.3	27.8	29.9	31.2	33.5	34.0	36.5	35.1	34.6	31.4	-3.2sss		
Smokeless Tobacco ^d																								
8th Grade	—	—	—	—	—	—	—	—	—	—	—	6.9	7.0	6.6	7.7	7.1	7.1	5.5	4.8	4.5	4.2	-0.3		
10th Grade	—	—	—	—	—	—	—	—	—	—	—	10.0	9.6	10.4	10.5	9.7	8.6	8.9	7.5	6.5	6.1	-0.5		
12th Grade	—	—	—	—	—	—	—	—	—	—	—	—	11.4	10.7	11.1	12.2	9.8	9.7	8.8	8.4	7.6	-0.7		
Steroids ^l																								
8th Grade	1.0	1.1	0.9	1.2	1.0	0.9	1.0	1.2	1.7	1.7	0.0	0.4	0.5	0.5	0.5	0.6	0.4	0.5	0.5	0.7	0.8	+0.1		
10th Grade	1.1	1.1	1.0	1.1	1.2	1.2	1.2	1.2	1.7	2.2	+0.5s	0.6	0.6	0.5	0.6	0.6	0.5	0.7	0.6	0.9	1.0	0.0		
12th Grade	1.4	1.1	1.2	1.3	1.5	1.4	1.4	1.7	1.8	1.7	-0.1	0.8	0.6	0.7	0.9	0.7	0.7	1.0	1.1	0.9	0.8	-0.1		

(See Table 1 for relevant footnotes)

TABLE 3

Trends in 30-Day Prevalence of Daily Use of Various Drugs for Eighth, Tenth, and Twelfth Graders

	Daily										'99-'00 change
	1991	1992	1993	1994	1995	1996	1997	1998	1999	2000	
Marijuana/Hashish, daily ^m											
8th Grade	0.2	0.2	0.4	0.7	0.8	1.5	1.1	1.1	1.4	1.3	0.0
10th Grade	0.8	0.8	1.0	2.2	2.8	3.5	3.7	3.6	3.8	3.8	0.0
12th Grade	2.0	1.9	2.4	3.6	4.6	4.9	5.8	5.6	6.0	6.0	0.0
Alcohol ^{l,m}											
Any daily use											
8th Grade	0.5	0.6	0.8	—	—	—	—	—	—	—	—
10th Grade	1.3	1.2	1.6	1.0	0.7	1.0	0.8	0.9	1.0	0.8	-0.3s
12th Grade	3.6	3.4	1.8	1.7	1.7	1.6	1.7	1.9	1.9	1.8	-0.1
Been Drunk, daily ^j											
8th Grade	0.1	0.1	0.2	0.3	0.2	0.2	0.2	0.3	0.4	0.3	-0.1
10th Grade	0.2	0.3	0.4	0.4	0.6	0.4	0.6	0.6	0.7	0.5	-0.2
12th Grade	0.9	0.8	0.9	1.2	1.3	1.6	2.0	1.5	1.9	1.7	-0.2
5+ drinks in a row in last 2 weeks											
8th Grade	12.9	13.4	13.5	14.5	14.5	15.6	14.5	13.7	15.2	14.1	-1.1
10th Grade	22.9	21.1	23.0	23.6	24.0	24.8	25.1	24.3	25.6	26.2	+0.6
12th Grade	29.8	27.9	27.5	28.2	29.8	30.2	31.3	31.5	30.8	30.0	-0.8
Cigarettes											
Any daily use											
8th Grade	7.2	7.0	8.3	8.8	9.3	10.4	9.0	8.8	8.1	7.4	-0.7
10th Grade	12.6	12.3	14.2	14.6	16.3	18.3	18.0	15.8	15.9	14.0	-1.9s
12th Grade	18.5	17.2	19.0	19.4	21.6	22.2	24.6	22.4	23.1	20.6	-2.5s
1/2 pack+/day											
8th Grade	3.1	2.9	3.5	3.6	3.4	4.3	3.5	3.6	3.3	2.8	-0.5
10th Grade	6.5	6.0	7.0	7.6	8.3	9.4	8.6	7.9	7.6	6.2	-1.4ss
12th Grade	10.7	10.0	10.9	11.2	12.4	13.0	14.3	12.6	13.2	11.3	-1.9ss
Smokeless Tobacco, daily ^d											
8th Grade	1.6	1.8	1.5	1.9	1.2	1.5	1.0	1.0	0.9	0.9	0.0
10th Grade	3.3	3.0	3.3	3.0	2.7	2.2	2.2	2.2	1.5	1.9	+0.3
12th Grade	—	4.3	3.3	3.9	3.6	3.3	4.4	3.2	2.9	3.2	+0.3

(See Table 1 for relevant footnotes)

Footnotes for Table 1 to Table 3

NOTES: Level of significance of difference between the two most recent classes: $s = .05$, $ss = .01$, $sss = .001$.

'—' indicates data not available. '*' indicates less than .05 percent but greater than 0 percent.

Any apparent inconsistency between the change estimate and the prevalence of use estimates for the two most recent classes is due to rounding error.

SOURCE: The Monitoring the Future Study, the University of Michigan.

Approximate Weighted Ns	1991	1992	1993	1994	1995	1996	1997	1998	1999	2000
8th Grade	17,500	18,600	18,300	17,300	17,500	17,800	18,600	18,100	16,700	16,700
10th Grade	14,800	14,800	15,300	15,800	17,000	15,600	15,500	15,000	13,600	14,300
12th Grade	15,000	15,800	16,300	15,400	15,400	14,300	15,400	15,200	13,600	12,800

^aFor 12th graders only: Use of "any illicit drug" includes any use of marijuana, LSD, other hallucinogens, crack, other cocaine, or heroin, or any use of other narcotics, amphetamines, barbiturates, or tranquilizers not under a doctor's orders. For 8th and 10th graders: The use of other narcotics and barbiturates has been excluded, because these younger respondents appear to overreport use (perhaps because they include the use of nonprescription drugs in their answers).

^bFor 12th graders only: Data based on five of six forms in 1991-98; N is five-sixths of N indicated. Beginning in 1999, data based on three of six forms; N is three-sixths of N indicated.

^cInhalants are unadjusted for underreporting of amyl and butyl nitrites; hallucinogens are unadjusted for underreporting of PCP.

^dFor 8th and 10th graders only: MDMA data based on one form in 1996; N is one-half of N indicated. Beginning in 1997, data based on one-third of N indicated due to changes on the questionnaire forms. Rohypnol data based on one-third of N indicated due to changes on the questionnaire forms. Smokeless tobacco data based on one of two forms for 1991-96 and on two of four forms beginning in 1997; N is one-half of N indicated. For 12th graders only: Data based on one form; N is one-sixth of N indicated.

^eFor 12th graders only: Data based on four of six forms; N is four-sixths of N indicated.

^fIn 1995, the heroin question was changed in three of six forms for 12th graders and in one of two forms for 8th and 10th graders. Separate questions were asked for use with injection and without injection. Data presented here represent the combined data from all forms. In 1996, the heroin question was changed in all remaining 8th and 10th grade forms.

^gFor 8th and 10th graders only: Data based on one of two forms in 1995; N is one-half of N indicated. For 12th graders only: Data based on three of six forms; N is three-sixths of N indicated.

^hOnly drug use which was not under a doctor's orders is included here.

ⁱFor 8th and 10th graders only: Data based on one of four forms; N is one-third of N indicated.

^jFor 12th graders only: Data based on two of six forms; N is two-sixths of N indicated.

^kFor 8th and 10th graders only: Data based on one of two forms in 1996-97; N is one-half of N indicated. Data based on three of four forms in 1998; N is two-thirds of N indicated. Beginning in 1999, data based on two of four forms; N is one-third of N indicated.

^lFor all grades: In 1993, the question text was changed slightly in half of the forms to indicate that a "drink" meant "more than a few sips." The data in the upper line for alcohol came from forms using the original wording, while the data in the lower line came from forms using the revised wording. In 1993, each line of data was based on one of two forms for the 8th and 10th graders and on three of six forms for the 12th graders. N is one-half of N indicated for all groups. Beginning in 1994, data were based on all forms for all grades.

^mDaily use is defined as use on twenty or more occasions in the past thirty days except for cigarettes and smokeless tobacco, for which actual daily use is measured, and for 5+ drinks, for which the prevalence or having five or more drinks in a row in the last two weeks is measured.

TABLE 4
Long-Term Trends in Lifetime Prevalence of Use of Various Drugs for Twelfth Graders

	Percent ever used																										'99-'00 change	
	Class of 1975	Class of 1976	Class of 1977	Class of 1978	Class of 1979	Class of 1980	Class of 1981	Class of 1982	Class of 1983	Class of 1984	Class of 1985	Class of 1986	Class of 1987	Class of 1988	Class of 1989	Class of 1990	Class of 1991	Class of 1992	Class of 1993	Class of 1994	Class of 1995	Class of 1996	Class of 1997	Class of 1998	Class of 1999	Class of 2000		
<i>Approx. N</i> <i>(in thousands) =</i>	9.4	15.4	17.1	17.8	15.5	15.9	17.5	17.7	16.3	15.9	16.0	15.2	16.3	16.3	16.7	15.2	15.0	15.8	16.3	15.4	15.4	14.3	15.4	15.2	13.6	12.8		
<i>Any Illicit Drug</i> ^{a,b}	55.2	58.3	61.6	64.1	65.1	65.4	65.6	64.4	62.9	61.6	60.6	57.6	56.6	53.9	50.9	47.9	44.1	40.7	42.9	45.6	48.4	50.8	54.3	54.1	54.7	54.0	-0.7	
<i>Any Illicit Drug</i> <i>Other Than</i> <i>Marijuana</i> ^{a,b}	36.2	35.4	35.8	36.5	37.4	38.7	42.8	41.1	40.4	40.3	39.7	37.7	35.8	32.5	31.4	29.4	26.9	25.1	26.7	27.6	28.1	28.5	30.0	29.4	29.4	29.0	-0.3	
Marijuana/Hashish	47.3	52.8	56.4	59.2	60.4	60.3	59.5	58.7	57.0	54.9	54.2	50.9	50.2	47.2	43.7	40.7	36.7	32.6	35.3	38.2	41.7	44.9	49.6	49.1	49.7	48.8	-0.9	
Inhalants ^c	—	10.3	11.1	12.0	12.7	11.9	12.3	12.8	13.6	14.4	15.4	15.9	17.0	16.7	17.6	18.0	17.6	16.6	17.4	17.7	17.4	16.6	16.1	15.2	15.4	14.2	-1.2	
<i>Inhalants,</i> <i>Adjusted</i> ^d	—	—	—	—	18.2	17.3	17.2	17.7	18.2	18.0	18.1	20.1	18.6	17.5	18.6	18.5	18.0	17.0	17.7	18.3	17.8	17.5	16.9	16.5	16.0	14.6	-1.5	
<i>Amyl/Butyl</i> <i>Nitrites</i> ^{e,f}	—	—	—	—	11.1	11.1	10.1	9.8	8.4	8.1	7.9	8.6	4.7	3.2	3.3	2.1	1.6	1.5	1.4	1.7	1.5	1.8	2.0	2.7	1.7	0.8	-0.8	
Hallucinogens	16.3	15.1	13.9	14.3	14.1	13.3	13.3	12.5	11.9	10.7	10.3	9.7	10.3	8.9	9.4	9.4	9.6	9.2	10.9	11.4	12.7	14.0	15.1	14.1	13.7	13.0	-0.7	
<i>Hallucinogens,</i> <i>Adjusted</i> ^g	—	—	—	—	17.7	15.6	15.3	14.3	13.6	12.3	12.1	11.9	10.6	9.2	9.9	9.7	10.0	9.4	11.3	11.7	13.1	14.5	15.4	14.4	14.2	13.6	-0.7	
LSD	11.3	11.0	9.8	9.7	9.5	9.3	9.8	9.6	8.9	8.0	7.5	7.2	8.4	7.7	8.3	8.7	8.8	8.6	10.3	10.5	11.7	12.6	13.6	12.6	12.2	11.1	-1.1	
Hallucinogens Other Than LSD	14.1	12.1	11.2	11.6	10.7	9.8	9.1	8.0	7.3	6.6	6.5	5.7	5.4	4.1	4.3	4.1	3.7	3.3	3.9	4.9	5.4	6.8	7.5	7.1	6.7	6.9	+0.2	
PCP ^{e,f}	—	—	—	—	12.8	9.6	7.8	6.0	5.6	5.0	4.9	4.8	3.0	2.9	3.9	2.8	2.9	2.4	2.9	2.8	2.7	4.0	3.9	3.9	3.4	3.4	-0.1	
MDMA (Ecstasy) ^e	—	—	—	—	—	—	—	—	—	—	—	—	—	—	—	—	—	—	—	—	—	6.1	6.9	5.8	8.0	11.0	+3.0s	
Cocaine	9.0	9.7	10.8	12.9	15.4	15.7	16.5	16.0	16.2	16.1	17.3	16.9	15.2	12.1	10.3	9.4	7.8	6.1	6.1	5.9	6.0	7.1	8.7	9.3	9.8	8.6	-1.2	
Crack ^h	—	—	—	—	—	—	—	—	—	—	—	—	—	5.4	4.8	4.7	3.5	3.1	2.6	2.6	3.0	3.0	3.3	3.9	4.4	4.6	3.9	-0.7s
Other Cocaine ⁱ	—	—	—	—	—	—	—	—	—	—	—	—	—	14.0	12.1	8.5	8.6	7.0	5.3	5.4	5.2	5.1	6.4	8.2	8.4	8.8	7.7	-1.1
Heroin ^j	2.2	1.8	1.8	1.6	1.1	1.1	1.1	1.2	1.2	1.3	1.2	1.1	1.2	1.1	1.3	1.3	0.9	1.2	1.1	1.2	1.6	1.8	2.1	2.0	2.0	2.4	+0.4	
With a needle ^k	—	—	—	—	—	—	—	—	—	—	—	—	—	—	—	—	—	—	—	—	—	0.7	0.8	0.9	0.8	0.9	0.8	-0.1
Without a needle ^k	—	—	—	—	—	—	—	—	—	—	—	—	—	—	—	—	—	—	—	—	—	1.4	1.7	2.1	1.6	1.8	2.4	+0.6
Other Narcotics ^l	9.0	9.6	10.3	9.9	10.1	9.8	10.1	9.6	9.4	9.7	10.2	9.0	9.2	8.6	8.3	8.3	6.6	6.1	6.4	6.6	7.2	8.2	9.7	9.8	10.2	10.6	+0.4	
Amphetamines ^{b,l}	22.3	22.6	23.0	22.9	24.2	26.4	32.2	27.9	26.9	27.9	26.2	23.4	21.6	19.8	19.1	17.5	15.4	13.9	15.1	15.7	15.3	15.3	16.5	16.4	16.3	15.6	-0.7	
Methamphetamine ^m	—	—	—	—	—	—	—	—	—	—	—	—	—	—	—	—	—	—	—	—	—	—	—	—	—	—	—	-0.3
Crystal Meth. (Ice) ^m	—	—	—	—	—	—	—	—	—	—	—	—	—	—	—	—	2.7	3.3	2.9	3.1	3.4	3.9	4.4	4.4	5.3	4.8	4.0	-0.8
Sedatives ^{l,n}	18.2	17.7	17.4	16.0	14.6	14.9	16.0	15.2	14.4	13.3	11.8	10.4	8.7	7.8	7.4	7.5	6.7	6.1	6.4	7.3	7.6	8.2	8.7	9.2	9.5	9.3	-0.2	
Barbiturates ^l	16.9	16.2	15.6	13.7	11.8	11.0	11.3	10.3	9.9	9.9	9.2	8.4	7.4	6.7	6.5	6.8	6.2	5.5	6.3	7.0	7.4	7.6	8.1	8.7	8.9	9.2	+0.2	
Methaqualone ^{l,n}	8.1	7.8	8.5	7.9	8.3	9.5	10.6	10.7	10.1	8.3	6.7	5.2	4.0	3.3	2.7	2.3	1.3	1.6	0.8	1.4	1.2	2.0	1.7	1.6	1.8	0.8	-1.0s	
Tranquilizers ^l	17.0	16.8	18.0	17.0	16.3	15.2	14.7	14.0	13.3	12.4	11.9	10.9	10.9	9.4	7.6	7.2	7.2	6.0	6.4	6.6	7.1	7.2	7.8	8.5	9.3	8.9	-0.5	
Rohypnol ^e	—	—	—	—	—	—	—	—	—	—	—	—	—	—	—	—	—	—	—	—	—	—	—	—	—	—	—	-0.6
Alcohol ^o	90.4	91.9	92.5	93.1	93.0	93.2	92.6	92.8	92.6	92.6	92.2	91.3	92.2	92.0	90.7	89.5	88.0	87.5	87.0	—	—	—	—	—	—	—	—	—
Been Drunk ^m	—	—	—	—	—	—	—	—	—	—	—	—	—	—	—	—	—	—	—	—	—	—	—	—	—	—	—	—
Cigarettes	73.6	75.4	75.7	75.3	74.0	71.0	71.0	70.1	70.6	69.7	68.8	67.6	67.2	66.4	65.7	64.4	63.1	61.8	61.9	62.0	64.2	63.5	65.4	65.3	64.6	62.5	-2.1	
Smokeless Tobacco ^{e,p}	—	—	—	—	—	—	—	—	—	—	—	—	—	—	—	—	—	—	—	—	—	—	—	—	—	—	—	-0.4
Steroids ^m	—	—	—	—	—	—	—	—	—	—	—	—	—	—	—	—	—	—	—	—	—	—	—	—	—	—	—	-0.4

NOTES: Level of significance of difference between the two most recent classes: s = .05, ss = .01, sss = .001. '—' indicates data not available.
Any apparent inconsistency between the change estimate and the prevalence of use estimates for the two most recent classes is due to rounding error.

SOURCE: The Monitoring the Future Study, the University of Michigan.

TABLE 5
Long-Term Trends in Annual Prevalence of Use of Various Drugs for Twelfth Graders

Percent who used in last twelve months

	Class of 1975	Class of 1976	Class of 1977	Class of 1978	Class of 1979	Class of 1980	Class of 1981	Class of 1982	Class of 1983	Class of 1984	Class of 1985	Class of 1986	Class of 1987	Class of 1988	Class of 1989	Class of 1990	Class of 1991	Class of 1992	Class of 1993	Class of 1994	Class of 1995	Class of 1996	Class of 1997	Class of 1998	Class of 1999	Class of 2000	'99-'00 change	
<i>Approx. N (in thousands) =</i>	9.4	15.4	17.1	17.8	15.5	15.9	17.5	17.7	16.3	15.9	16.0	15.2	16.3	16.3	16.7	15.2	15.0	15.8	16.3	15.4	15.4	14.3	15.4	15.2	13.6	12.8		
Any Illicit Drug ^{a,b}	45.0	48.1	51.1	53.8	54.2	53.1	52.1	49.4	47.4	45.8	46.3	44.3	41.7	38.5	35.4	32.5	29.4	27.1	31.0	35.8	39.0	40.2	42.4	41.4	42.1	40.9	-1.2	
Any Illicit Drug Other Than Marijuana ^{a,b}	26.2	25.4	26.0	27.1	28.2	30.4	34.0	30.1	28.4	28.0	27.4	25.9	24.1	21.1	20.0	17.9	16.2	14.9	17.1	18.0	19.4	19.8	20.7	20.2	20.7	20.4	-0.3	
Marijuana/Hashish	40.0	44.5	47.6	50.2	50.8	48.8	46.1	44.3	42.3	40.0	40.6	38.8	36.3	33.1	29.6	27.0	23.9	21.9	26.0	30.7	34.7	35.8	38.5	37.5	37.8	36.5	-1.3	
Inhalants ^c	—	3.0	3.7	4.1	5.4	4.6	4.1	4.5	4.3	5.1	5.7	6.1	6.9	6.5	5.9	6.9	6.6	6.2	7.0	7.7	8.0	7.6	6.7	6.2	5.6	5.9	+0.3	
Inhalants, Adjusted ^d	—	—	—	—	8.9	7.9	6.1	6.6	6.2	7.2	7.5	8.9	8.1	7.1	6.9	7.5	6.9	6.4	7.4	8.2	8.4	8.5	7.3	7.1	6.0	6.2	+0.2	
Amyl/Butyl Nitrites ^{e,f}	—	—	—	—	6.5	5.7	3.7	3.6	3.6	4.0	4.0	4.7	2.6	1.7	1.7	1.4	0.9	0.5	0.9	1.1	1.1	1.6	1.2	1.4	0.9	0.6	-0.3	
Hallucinogens	11.2	9.4	8.8	9.6	9.9	9.3	9.0	8.1	7.3	6.5	6.3	6.0	6.4	5.5	5.6	5.9	5.8	5.9	7.4	7.6	9.3	10.1	9.8	9.0	9.4	8.1	-1.3s	
Hallucinogens, Adjusted ^g	—	—	—	—	11.8	10.4	10.1	9.0	8.3	7.3	7.6	7.6	6.7	5.8	6.2	6.0	6.1	6.2	7.8	7.8	9.7	10.7	10.0	9.2	9.8	8.7	-1.1	
LSD	7.2	6.4	5.5	6.3	6.6	6.5	6.5	6.1	5.4	4.7	4.4	4.5	5.2	4.8	4.9	5.4	5.2	5.6	6.8	6.9	8.4	8.8	8.4	7.6	8.1	6.6	-1.5s	
Hallucinogens Other Than LSD	9.4	7.0	6.9	7.3	6.8	6.2	5.6	4.7	4.1	3.8	3.6	3.0	3.2	2.1	2.2	2.1	2.0	1.7	2.2	3.1	3.8	4.4	4.6	4.6	4.3	4.4	+0.1	
PCP ^{e,f}	—	—	—	—	7.0	4.4	3.2	2.2	2.6	2.3	2.9	2.4	1.3	1.2	2.4	1.2	1.4	1.4	1.6	1.8	2.6	2.3	2.1	1.8	2.3	2.3	+0.5	
MDMA (Ecstasy) ^e	—	—	—	—	—	—	—	—	—	—	—	—	—	—	—	—	—	—	—	—	—	4.6	4.0	3.6	5.6	8.2	+2.6ss	
Cocaine	5.6	6.0	7.2	9.0	12.0	12.3	12.4	11.5	11.4	11.6	13.1	12.7	10.3	7.9	6.5	5.3	3.5	3.1	3.3	3.6	4.0	4.9	5.5	5.7	6.2	5.0	-1.3s	
Crack ^h	—	—	—	—	—	—	—	—	—	—	—	4.1	3.9	3.1	3.1	1.9	1.5	1.5	1.5	1.9	2.1	2.1	2.4	2.5	2.7	2.2	-0.5s	
Other Cocaine ⁱ	—	—	—	—	—	—	—	—	—	—	—	—	9.8	7.4	5.2	4.6	3.2	2.6	2.9	3.0	3.4	4.2	5.0	4.9	5.8	4.5	-1.4s	
Heroin ^j	1.0	0.8	0.8	0.8	0.5	0.5	0.5	0.6	0.6	0.5	0.6	0.5	0.5	0.5	0.6	0.5	0.4	0.6	0.5	0.6	1.1	1.0	1.2	1.0	1.1	1.5	+0.4s	
With a needle ^k	—	—	—	—	—	—	—	—	—	—	—	—	—	—	—	—	—	—	—	—	0.5	0.5	0.5	0.4	0.4	0.4	0.0	
Without a needle ^k	—	—	—	—	—	—	—	—	—	—	—	—	—	—	—	—	—	—	—	—	1.0	1.0	1.2	0.8	1.0	1.6	+0.6ss	
Other Narcotics ^l	5.7	5.7	6.4	6.0	6.2	6.3	5.9	5.3	5.1	5.2	5.9	5.2	5.3	4.6	4.4	4.5	3.5	3.3	3.6	3.8	4.7	5.4	6.2	6.3	6.7	7.0	+0.3	
Amphetamines ^{b,l}	16.2	15.8	16.3	17.1	18.3	20.8	26.0	20.3	17.9	17.7	15.8	13.4	12.2	10.9	10.8	9.1	8.2	7.1	8.4	9.4	9.3	9.5	10.2	10.1	10.2	10.5	+0.3	
Methamphetamine ^m	—	—	—	—	—	—	—	—	—	—	—	—	—	—	—	—	—	—	—	—	—	—	—	—	—	4.7	4.3	-0.3
Crystal Meth. (Ice) ^m	—	—	—	—	—	—	—	—	—	—	—	—	—	—	—	1.3	1.4	1.3	1.7	1.8	2.4	2.8	2.3	3.0	1.9	2.2	+0.3	
Sedatives ^{l,n}	11.7	10.7	10.8	9.9	9.9	10.3	10.5	9.1	7.9	6.6	5.8	5.2	4.1	3.7	3.7	3.6	3.6	2.9	3.4	4.2	4.9	5.3	5.4	6.0	6.3	6.3	0.0	
Barbiturates ^l	10.7	9.6	9.3	8.1	7.5	6.8	6.6	5.5	5.2	4.9	4.6	4.2	3.6	3.2	3.3	3.4	3.4	2.8	3.4	4.1	4.7	4.9	5.1	5.5	5.8	6.2	+0.4	
Methaqualone ^{l,n}	5.1	4.7	5.2	4.9	5.9	7.2	7.6	6.8	5.4	3.8	2.8	2.1	1.5	1.3	1.3	0.7	0.5	0.6	0.2	0.8	0.7	1.1	1.0	1.1	1.1	0.3	-0.8ss	
Tranquilizers ^l	10.6	10.3	10.8	9.9	9.6	8.7	8.0	7.0	6.9	6.1	6.1	5.8	5.5	4.8	3.8	3.5	3.6	2.8	3.5	3.7	4.4	4.6	4.7	5.5	5.8	5.7	-0.1	
Rohypnol ^e	—	—	—	—	—	—	—	—	—	—	—	—	—	—	—	—	—	—	—	—	—	1.1	1.2	1.4	1.0	0.8	-0.2	
Alcohol ^p	84.8	85.7	87.0	87.7	88.1	87.9	87.0	86.8	87.3	86.0	85.6	84.5	85.7	85.3	82.7	80.6	77.7	76.8	76.0	—	—	—	—	—	—	—	—	
Been Drunk ^m	—	—	—	—	—	—	—	—	—	—	—	—	—	—	—	—	—	—	—	—	—	—	—	—	—	—	—	—
Cigarettes	—	—	—	—	—	—	—	—	—	—	—	—	—	—	—	—	—	—	—	—	—	—	—	—	—	—	—	—
Smokeless Tobacco ^{e,p}	—	—	—	—	—	—	—	—	—	—	—	—	—	—	—	—	—	—	—	—	—	—	—	—	—	—	—	—
Steroids ^m	—	—	—	—	—	—	—	—	—	—	—	—	—	—	—	1.9	1.7	1.4	1.1	1.2	1.3	1.5	1.4	1.4	1.7	1.8	1.7	-0.1

NOTES: Level of significance of difference between the two most recent classes: s = .05, ss = .01, sss = .001. '—' indicates data not available. See Table 4 for relevant footnotes. Any apparent inconsistency between the change estimate and the prevalence of use estimates for the two most recent classes is due to rounding error.

SOURCE: The Monitoring the Future Study, the University of Michigan.

TABLE 6
Long-Term Trends in Thirty-Day Prevalence of Use of Various Drugs for Twelfth Graders

	Percent who used in last thirty days																									'99-'00 change		
	Class of 1975	Class of 1976	Class of 1977	Class of 1978	Class of 1979	Class of 1980	Class of 1981	Class of 1982	Class of 1983	Class of 1984	Class of 1985	Class of 1986	Class of 1987	Class of 1988	Class of 1989	Class of 1990	Class of 1991	Class of 1992	Class of 1993	Class of 1994	Class of 1995	Class of 1996	Class of 1997	Class of 1998	Class of 1999		Class of 2000	
<i>Approx. N (in thousands) =</i>	9.4	15.4	17.1	17.8	15.5	15.9	17.5	17.7	16.3	15.9	16.0	15.2	16.3	16.3	16.7	15.2	15.0	15.8	16.3	15.4	15.4	14.3	15.4	15.2	13.6	12.8		
Any Illicit Drug ^{a,b}	30.7	34.2	37.6	38.9	38.9	37.2	36.9	32.5	30.5	29.2	29.7	27.1	24.7	21.3	19.7	17.2	16.4	14.4	18.3	21.9	23.8	24.6	26.2	25.6	25.9	24.9	-1.0	
Any Illicit Drug Other Than Marijuana ^{a,b}	15.4	13.9	15.2	15.1	16.8	18.4	21.7	17.0	15.4	15.1	14.9	13.2	11.6	10.0	9.1	8.0	7.1	6.3	7.9	8.8	10.0	9.5	10.7	10.7	10.4	10.4	0.0	
Marijuana/Hashish	27.1	32.2	35.4	37.1	36.5	33.7	31.6	28.5	27.0	25.2	25.7	23.4	21.0	18.0	16.7	14.0	13.8	11.9	15.5	19.0	21.2	21.9	23.7	22.8	23.1	21.6	-1.6	
Inhalants ^c	—	0.9	1.3	1.5	1.7	1.4	1.5	1.5	1.7	1.9	2.2	2.5	2.8	2.6	2.3	2.7	2.4	2.3	2.5	2.7	3.2	2.5	2.5	2.3	2.0	2.2	+0.2	
Inhalants, Adjusted ^d	—	—	—	—	3.2	2.7	2.5	2.5	2.5	2.6	3.0	3.2	3.5	3.0	2.7	2.9	2.6	2.5	2.8	2.9	3.5	2.9	2.9	3.1	2.4	2.4	0.0	
Amyl/Butyl Nitrites ^{e,f}	—	—	—	—	2.4	1.8	1.4	1.1	1.4	1.4	1.6	1.3	1.3	0.6	0.6	0.6	0.4	0.3	0.6	0.4	0.4	0.7	0.7	1.0	0.4	0.3	-0.1	
Hallucinogens	4.7	3.4	4.1	3.9	4.0	3.7	3.7	3.4	2.8	2.6	2.5	2.5	2.2	2.2	2.2	2.2	2.1	2.7	3.1	4.4	3.5	3.9	3.8	3.5	2.6	-0.9ss		
Hallucinogens, Adjusted ^g	—	—	—	—	5.3	4.4	4.5	4.1	3.5	3.2	3.8	3.5	2.8	2.3	2.9	2.3	2.4	2.3	3.3	3.2	4.6	3.8	4.1	4.1	3.9	3.0	-0.9s	
LSD	2.3	1.9	2.1	2.1	2.4	2.3	2.5	2.4	1.9	1.5	1.6	1.7	1.8	1.8	1.8	1.9	1.9	2.0	2.4	2.6	4.0	2.5	3.1	3.2	2.7	1.6	-1.2sss	
Hallucinogens Other Than LSD	3.7	2.3	3.0	2.7	2.4	2.3	2.1	1.7	1.5	1.6	1.3	1.3	1.1	0.7	0.8	0.8	0.7	0.5	0.8	1.2	1.3	1.6	1.7	1.6	1.6	1.7	+0.1	
PCP ^{e,f}	—	—	—	—	2.4	1.4	1.4	1.0	1.3	1.0	1.6	1.3	0.6	0.3	1.4	0.4	0.5	0.6	1.0	0.7	0.6	1.3	0.7	1.0	0.8	0.9	+0.1	
MDMA (Ecstasy) ^e	—	—	—	—	—	—	—	—	—	—	—	—	—	—	—	—	—	—	—	—	—	2.0	1.6	1.5	2.5	3.6	+1.1	
Cocaine	1.9	2.0	2.9	3.9	5.7	5.2	5.8	5.0	4.9	5.8	6.7	6.2	4.3	3.4	2.8	1.9	1.4	1.3	1.3	1.5	1.8	2.0	2.3	2.4	2.6	2.1	-0.5	
Crack ^h	—	—	—	—	—	—	—	—	—	—	—	—	1.3	1.6	1.4	0.7	0.7	0.6	0.7	0.8	1.0	1.0	0.9	1.0	1.1	1.0	-0.1	
Other Cocaine ⁱ	—	—	—	—	—	—	—	—	—	—	—	—	4.1	3.2	1.9	1.7	1.2	1.0	1.2	1.3	1.3	1.6	2.0	2.0	2.5	1.7	-0.7s	
Heroin ^j	0.4	0.2	0.3	0.3	0.2	0.2	0.2	0.2	0.2	0.3	0.3	0.2	0.2	0.2	0.3	0.2	0.2	0.3	0.2	0.3	0.6	0.5	0.5	0.5	0.5	0.7	+0.2	
With a needle ^k	—	—	—	—	—	—	—	—	—	—	—	—	—	—	—	—	—	—	—	—	0.3	0.4	0.3	0.2	0.2	0.2	0.0	
Without a needle ^k	—	—	—	—	—	—	—	—	—	—	—	—	—	—	—	—	—	—	—	—	0.6	0.4	0.6	0.4	0.4	0.7	+0.3	
Other Narcotics ^l	2.1	2.0	2.8	2.1	2.4	2.4	2.1	1.8	1.8	1.8	2.3	2.0	1.8	1.6	1.6	1.5	1.1	1.2	1.3	1.5	1.8	2.0	2.3	2.4	2.6	2.9	+0.3	
Amphetamines ^{b,l}	8.5	7.7	8.8	8.7	9.9	12.1	15.8	10.7	8.9	8.3	6.8	5.5	5.2	4.6	4.2	3.7	3.2	2.8	3.7	4.0	4.0	4.1	4.8	4.6	4.5	5.0	+0.5	
Methamphetamine ^m	—	—	—	—	—	—	—	—	—	—	—	—	—	—	—	—	—	—	—	—	—	—	—	—	1.7	1.9	+0.2	
Crystal Meth. (Ice) ^m	—	—	—	—	—	—	—	—	—	—	—	—	—	—	—	0.6	0.6	0.5	0.6	0.7	1.1	1.1	0.8	1.2	0.8	1.0	+0.2	
Sedatives ^{l,n}	5.4	4.5	5.1	4.2	4.4	4.8	4.6	3.4	3.0	2.3	2.4	2.2	1.7	1.4	1.6	1.4	1.5	1.2	1.3	1.8	2.3	2.3	2.1	2.8	2.8	3.1	+0.3	
Barbiturates ^l	4.7	3.9	4.3	3.2	3.2	2.9	2.6	2.0	2.1	1.7	2.0	1.8	1.4	1.2	1.4	1.3	1.4	1.1	1.3	1.7	2.2	2.1	2.1	2.6	2.6	3.0	+0.4	
Methaqualone ^{l,n}	2.1	1.6	2.3	1.9	2.3	3.3	3.1	2.4	1.8	1.1	1.0	0.8	0.6	0.5	0.6	0.2	0.2	0.4	0.1	0.4	0.4	0.6	0.3	0.6	0.4	0.2	-0.3	
Tranquilizers ^l	4.1	4.0	4.6	3.4	3.7	3.1	2.7	2.4	2.5	2.1	2.1	2.1	2.0	1.5	1.3	1.2	1.4	1.0	1.2	1.4	1.8	2.0	1.8	2.4	2.5	2.6	+0.1	
Rohypnol ^e	—	—	—	—	—	—	—	—	—	—	—	—	—	—	—	—	—	—	—	—	—	0.5	0.3	0.3	0.3	0.4	+0.1	
Alcohol ^o	68.2	68.3	71.2	72.1	71.8	72.0	70.7	69.7	69.4	67.2	65.9	65.3	66.4	63.9	60.0	57.1	54.0	51.3	51.0	—	—	—	—	—	—	—	—	
Been Drunk ^m	—	—	—	—	—	—	—	—	—	—	—	—	—	—	—	—	31.6	29.9	28.9	30.8	33.2	31.3	34.2	32.9	32.9	32.3	-0.6	
Cigarettes	36.7	38.8	38.4	36.7	34.4	30.5	29.4	30.0	30.3	29.3	30.1	29.6	29.4	28.7	28.6	29.4	28.3	27.8	29.9	31.2	33.5	34.0	36.5	35.1	34.6	31.4	-3.2ss	
Smokeless Tobacco ^{e,p}	—	—	—	—	—	—	—	—	—	—	—	—	11.5	11.3	10.3	8.4	—	—	11.4	10.7	11.1	12.2	9.8	9.7	8.8	8.4	7.6	-0.7
Steroids ^m	—	—	—	—	—	—	—	—	—	—	—	—	—	—	0.8	1.0	0.8	0.6	0.7	0.9	0.7	0.7	1.0	1.1	0.9	0.8	-0.1	

NOTES: Level of significance of difference between the two most recent classes: s = .05, ss = .01, sss = .001. '—' indicates data not available. See Table 4 for relevant footnotes. Any apparent inconsistency between the change estimate and the prevalence of use estimates for the two most recent classes is due to rounding error.

SOURCE: The Monitoring the Future Study, the University of Michigan.

TABLE 7
Long-Term Trends in Thirty-Day Prevalence of Daily Use of Various Drugs for Twelfth Graders

Percent who used daily in last thirty days

	Class of 1975	Class of 1976	Class of 1977	Class of 1978	Class of 1979	Class of 1980	Class of 1981	Class of 1982	Class of 1983	Class of 1984	Class of 1985	Class of 1986	Class of 1987	Class of 1988	Class of 1989	Class of 1990	Class of 1991	Class of 1992	Class of 1993	Class of 1994	Class of 1995	Class of 1996	Class of 1997	Class of 1998	Class of 1999	Class of 2000	'99-'00 change		
<i>Approx. N (in thousands) =</i>	9.4	15.4	17.1	17.8	15.5	15.9	17.5	17.7	16.3	15.9	16.0	15.2	16.3	16.3	16.7	15.2	15.0	15.8	16.3	15.4	15.4	14.3	15.4	15.2	13.6	12.8			
Marijuana/Hashish	6.0	8.2	9.1	10.7	10.3	9.1	7.0	6.3	5.5	5.0	4.9	4.0	3.3	2.7	2.9	2.2	2.0	1.9	2.4	3.6	4.6	4.9	5.8	5.6	6.0	6.0	0.0		
Inhalants ^c	—	*	*	0.1	*	0.1	0.1	0.1	0.1	0.1	0.1	0.2	0.2	0.1	0.2	0.2	0.3	0.2	0.1	0.1	0.1	0.1	0.2	0.1	0.2	0.2	0.2	0.0	
<i>Inhalants, Adjusted^d</i>	—	—	—	—	0.1	0.2	0.2	0.2	0.2	0.2	0.2	0.4	0.4	0.4	0.3	0.3	0.3	0.5	0.2	0.2	—	—	0.4	0.2	0.9	0.3	0.3	-0.1	
Amyl/Butyl Nitrites ^{e,f}	—	—	—	—	*	0.1	0.1	0.0	0.2	0.1	0.3	0.5	0.3	0.1	0.3	0.1	0.2	0.1	0.1	0.2	0.2	0.4	0.1	0.3	0.2	*	-0.2		
Hallucinogens	0.1	0.1	0.1	0.1	0.1	0.1	0.1	0.1	0.1	0.1	0.1	0.1	0.1	*	0.1	0.1	0.1	0.1	0.1	0.1	0.1	0.1	0.1	0.3	0.1	0.1	0.2	+0.1	
<i>Hallucinogens, Adjusted^g</i>	—	—	—	—	0.2	0.2	0.1	0.2	0.2	0.2	0.3	0.3	0.2	*	0.3	0.3	0.1	0.1	0.1	—	—	0.4	0.4	0.8	0.2	0.2	0.0		
LSD	*	*	*	*	*	*	0.1	*	0.1	0.1	0.1	*	0.1	*	*	0.1	0.1	0.1	0.1	0.1	0.1	*	0.2	0.1	0.1	0.1	+0.1		
Hallucinogens Other Than LSD	—	0.1	0.1	*	*	*	0.1	*	*	0.1	*	*	*	*	*	*	*	*	*	*	0.1	0.1	0.1	0.1	0.1	*	0.1	+0.1s	
PCP ^{e,f}	—	—	—	—	0.1	0.1	0.1	0.1	0.1	0.1	0.3	0.2	0.3	0.1	0.2	0.1	0.1	0.1	0.1	0.1	0.3	0.3	0.3	0.1	0.3	0.2	0.2	0.0	
MDMA (Ecstasy) ^e	—	—	—	—	—	—	—	—	—	—	—	—	—	—	—	—	—	—	—	—	—	0.0	0.1	0.2	0.1	*	-0.1		
Cocaine	0.1	0.1	0.1	0.1	0.2	0.2	0.3	0.2	0.2	0.2	0.4	0.4	0.3	0.2	0.3	0.1	0.1	0.1	0.1	0.1	0.2	0.2	0.2	0.2	0.2	0.2	0.2	0.0	
Crack ^h	—	—	—	—	—	—	—	—	—	—	—	—	—	0.1	0.1	0.2	0.1	0.1	0.1	0.1	0.1	0.1	0.2	0.1	0.1	0.1	0.2	0.1	-0.1
Other Cocaine ⁱ	—	—	—	—	—	—	—	—	—	—	—	—	—	0.2	0.2	0.1	0.1	0.1	*	0.1	0.1	0.1	0.1	0.1	0.1	0.2	0.1	0.0	
Heroin ^j	0.1	*	*	*	*	*	*	*	0.1	*	*	*	*	*	*	0.1	*	*	*	*	*	0.1	0.1	0.1	0.1	0.1	0.1	0.0	
With a needle ^k	—	—	—	—	—	—	—	—	—	—	—	—	—	—	—	—	—	—	—	—	—	0.1	0.2	0.1	*	*	*	0.0	
Without a needle ^k	—	—	—	—	—	—	—	—	—	—	—	—	—	—	—	—	—	—	—	—	—	*	0.1	0.1	0.0	0.0	0.0		
Other Narcotics ^l	0.1	0.1	0.2	0.1	*	0.1	0.1	0.1	0.1	0.1	0.1	0.1	0.1	0.1	0.2	0.1	0.1	*	*	0.1	0.1	0.2	0.2	0.1	0.2	0.1	0.0		
Amphetamines ^{h,l}	0.5	0.4	0.5	0.5	0.6	0.7	1.2	0.7	0.8	0.6	0.4	0.3	0.3	0.3	0.3	0.2	0.2	0.2	0.2	0.2	0.2	0.3	0.3	0.3	0.3	0.3	0.5	+0.2s	
Methamphetamine ^m	—	—	—	—	—	—	—	—	—	—	—	—	—	—	—	—	—	—	—	—	—	—	—	—	—	0.1	0.1	0.0	
Crystal Meth. (Ice) ^m	—	—	—	—	—	—	—	—	—	—	—	—	—	—	—	0.1	0.1	0.1	0.1	*	0.1	0.1	0.1	*	*	0.1	0.0		
Sedatives ^{l,n}	0.3	0.2	0.2	0.2	0.1	0.2	0.2	0.2	0.2	0.1	0.1	0.1	0.1	0.1	0.1	0.1	0.1	0.1	0.1	*	0.1	0.1	0.1	0.1	0.1	0.2	0.1	-0.1s	
Barbiturates ^l	0.1	0.1	0.2	0.1	*	0.1	0.1	0.1	0.1	*	0.1	0.1	0.1	*	0.1	0.1	0.1	*	0.1	*	0.1	0.1	0.1	0.1	0.1	0.2	0.1	-0.1s	
Methaqualone ^{l,n}	*	*	*	*	*	0.1	0.1	0.1	*	*	*	*	*	0.1	*	*	*	*	0.1	0.0	0.1	0.1	0.0	0.1	0.0	0.0	0.0	0.0	
Tranquilizers ^l	0.1	0.2	0.3	0.1	0.1	0.1	0.1	0.1	0.1	0.1	*	*	0.1	*	0.1	0.1	0.1	*	*	0.1	*	0.2	0.1	0.1	0.1	0.1	0.1	-0.1	
Rohypnol ^e	—	—	—	—	—	—	—	—	—	—	—	—	—	—	—	—	—	—	—	—	—	0.1	0.0	0.1	0.1	0.1	0.1	+0.1	
Alcohol Daily ^o	5.7	5.6	6.1	5.7	6.9	6.0	6.0	5.7	5.5	4.8	5.0	4.8	4.8	4.2	4.2	3.7	3.6	3.4	2.5	—	—	—	—	—	—	—	—	—	
																			3.4	2.9	3.5	3.7	3.9	3.9	3.4	2.9	-0.4		
Been drunk daily ^m	—	—	—	—	—	—	—	—	—	—	—	—	—	—	—	—	—	0.9	0.8	0.9	1.2	1.3	1.6	2.0	1.5	1.9	1.7	-0.2	
5+ drinks in a row in last 2 weeks	36.8	37.1	39.4	40.3	41.2	41.4	40.5	40.8	38.7	36.7	36.8	37.5	34.7	33.0	32.2	29.8	27.9	27.5	28.2	29.8	30.2	31.3	31.5	30.8	30.0	30.0	-0.8		
Cigarettes Daily	26.9	28.8	28.8	27.5	25.4	21.3	20.3	21.1	21.2	18.7	19.5	18.7	18.7	18.1	18.9	19.1	18.5	17.2	19.0	19.4	21.6	22.2	24.6	22.4	23.1	20.6	-2.5s		
Half-pack or more per day	17.9	19.2	19.4	18.8	16.5	14.3	13.5	14.2	13.8	12.3	12.5	11.4	11.4	10.6	11.2	11.3	10.7	10.0	10.9	11.2	12.4	13.0	14.3	12.6	13.2	11.3	-1.9ss		
Smokeless Tobacco ^{e,p}	—	—	—	—	—	—	—	—	—	—	—	4.7	5.1	4.3	3.3	—	—	4.3	3.3	3.9	3.6	3.3	4.4	3.2	2.9	3.2	+0.3		
Steroids ^m	—	—	—	—	—	—	—	—	—	—	—	—	—	—	0.1	0.2	0.1	0.1	0.1	0.4	0.2	0.3	0.3	0.3	0.2	0.2	0.0		

NOTES: Level of significance of difference between the two most recent classes: s = .05, ss = .01, sss = .001. '—' indicates data not available. '**' indicates less than .05 percent but greater than 0 percent. See Table 4 for relevant footnotes.

Any apparent inconsistency between the change estimate and the prevalence of use estimates for the two most recent classes is due to rounding error.

Daily use is defined as use on 20 or more occasions in the past 30 days except for 5+ drinks, cigarettes, and smokeless tobacco, for which actual daily use is measured.

SOURCE: The Monitoring the Future Study, the University of Michigan.

Footnotes for Table 4 to Table 7

^aUse of “any illicit drug” includes any use of marijuana, LSD, other hallucinogens, crack, other cocaine, or heroin, or any use of other narcotics, amphetamines, barbiturates, methaqualone (excluded since 1990), or tranquilizers not under a doctor’s orders.

^bBeginning in 1982 the question about amphetamine use was revised to get respondents to exclude the inappropriate reporting of nonprescription amphetamines. The prevalence of use rate dropped slightly as a result of this methodological change.

^cData based on four of five forms in 1976–88; N is four-fifths of N indicated. Data based on five of six forms in 1989–98; N is five-sixths of N indicated. Beginning in 1999, data based on three of six forms; N is three-sixths of N indicated.

^dAdjusted for underreporting of amyl and butyl nitrites. See text for details.

^eData based on one form; N is one-fifth of N indicated in 1979–88 and one-sixth of N indicated in 1989–2000.

^fQuestion text changed slightly in 1987.

^gAdjusted for underreporting of PCP. See text for details.

^hData based on one of five forms in 1986; N is one-fifth of N indicated. Data based on two forms in 1987–89; N is two-fifths of N indicated in 1987–88 and two-sixths of N indicated in 1989. Data based on six forms in 1990–2000.

ⁱData based on one form in 1987–89; N is one-fifth of N indicated in 1987–88 and one-sixth of N indicated in 1989. Data based on four of six forms in 1990–2000; N is four-sixths of N indicated.

^jIn 1995 the heroin question was changed in half of the questionnaire forms. Separate questions were asked for use with injection and without injection. Data presented here represent the combined data from all forms.

^kData based on three of six forms; N is three-sixths of N indicated.

^lOnly drug use which was not under a doctor’s orders is included here.

^mData based on two of six forms; N is two-sixths of N indicated. Steroid data based on one of six forms in 1989–90; N is one-sixth of N indicated in 1989–90. Steroid data based on two of six forms since 1991; N is two-sixths of N indicated since 1991.

ⁿSedatives: Data based on five forms in 1975–88, six forms in 1989, one form in 1990 (N is one-sixth of N indicated in 1990), and six forms of data adjusted by one-form data beginning in 1991. Methaqualone: Data based on five forms in 1975–88, six forms in 1989, and one of six forms beginning in 1990; N is one-sixth of N indicated beginning in 1990.

^oData based on five forms in 1975–88 and on six forms in 1989–92. In 1993, the question text was changed slightly in three of six forms to indicate that a “drink” meant “more than a few sips.” The data in the upper line for alcohol came from the three forms using the original wording (N is three-sixths of N indicated), while the data in the lower line came from the three forms containing the revised wording (N is three-sixths of N indicated). Beginning in 1994, data based on all six forms.

^pThe prevalence of use of smokeless tobacco was not asked of twelfth graders in 1990 and 1991. Prior to 1990 the prevalence of use question on smokeless tobacco was located near the end of one twelfth-grade questionnaire form, whereas after 1991 the question was placed earlier and in a different form. This shift could explain the discontinuities between the corresponding data.

SOURCE: The Monitoring the Future Study, the University of Michigan.

TABLE 8

Trends in Harmfulness of Drugs as Perceived by Eighth, Tenth, and Twelfth Graders, 1991–2000

How much do you think people risk harming themselves (physically or in other ways), if they . . .	Percentage saying "great risk" ^{na}																					
	8th Grade											10th Grade										
	1991	1992	1993	1994	1995	1996	1997	1998	1999	2000	'99-'00 change	1991	1992	1993	1994	1995	1996	1997	1998	1999	2000	'99-'00 change
Try marijuana once or twice	40.4	39.1	36.2	31.6	28.9	27.9	25.3	28.1	28.0	29.0	+0.9	30.0	31.9	29.7	24.4	21.5	20.0	18.8	19.6	19.2	18.5	-0.7
Smoke marijuana occasionally	57.9	56.3	53.8	48.6	45.9	44.3	43.1	45.0	45.7	47.4	+1.8	48.6	48.9	46.1	38.9	35.4	32.8	31.9	32.5	33.5	32.4	-1.1
Smoke marijuana regularly	83.8	82.0	79.6	74.3	73.0	70.9	72.7	73.0	73.3	74.8	+1.4	82.1	81.1	78.5	71.3	67.9	65.9	65.9	65.8	65.9	64.7	-1.2
Try inhalants once or twice ^b	35.9	37.0	36.5	37.9	36.4	40.8	40.1	38.9	40.8	41.2	+0.3	37.8	38.7	40.9	42.7	41.6	47.2	47.5	45.8	48.2	46.6	-1.6
Try inhalants regularly ^b	65.6	64.4	64.6	65.5	64.8	68.2	68.7	67.2	68.8	69.9	+1.1	69.8	67.9	69.6	71.5	71.8	75.8	74.5	73.3	76.3	75.0	-1.3
Take LSD once or twice ^c	—	—	42.1	38.3	36.7	36.5	37.0	34.9	34.1	34.0	-0.2	—	—	48.7	46.5	44.7	45.1	44.5	43.5	45.0	43.0	-2.1
Take LSD regularly ^c	—	—	68.3	65.8	64.4	63.6	64.1	59.6	58.8	57.5	-1.3	—	—	78.9	75.9	75.5	75.3	73.8	72.3	73.9	72.0	-1.9
Try crack once or twice ^b	62.8	61.2	57.2	54.4	50.8	51.0	49.9	49.3	48.7	48.5	-0.2	70.4	69.6	66.6	64.7	60.9	60.9	59.2	58.0	57.8	56.1	-1.7
Take crack occasionally ^b	82.2	79.6	76.8	74.4	72.1	71.6	71.2	70.6	70.6	70.1	-0.5	87.4	86.4	84.4	83.1	81.2	80.3	78.7	77.5	79.1	76.9	-2.2s
Try cocaine powder once or twice ^b	55.5	54.1	50.7	48.4	44.9	45.2	45.0	44.0	43.3	43.3	0.0	59.1	59.2	57.5	56.4	53.5	53.6	52.2	50.9	51.6	48.8	-2.8ss
Take cocaine powder occasionally ^b	77.0	74.3	71.8	69.1	66.4	65.7	65.8	65.2	65.4	65.5	+0.1	82.2	80.1	79.1	77.8	75.6	75.0	73.9	71.8	73.6	70.9	-2.7ss
Try heroin once or twice without using a needle ^c	—	—	—	—	60.1	61.3	63.0	62.8	63.0	62.0	-1.0	—	—	—	—	70.7	72.1	73.1	71.7	73.7	71.7	-1.9
Take heroin occasionally without using a needle ^c	—	—	—	—	76.8	76.6	79.2	79.0	78.9	78.6	-0.3	—	—	—	—	85.1	85.8	86.5	84.9	86.5	85.2	-1.3
Try one or two drinks of an alcoholic beverage (beer, wine, liquor)	11.0	12.1	12.4	11.6	11.6	11.8	10.4	12.1	11.6	11.9	+0.3	9.0	10.1	10.9	9.4	9.3	8.9	9.0	10.1	10.5	9.6	-1.0
Take one or two drinks nearly every day	31.8	32.4	32.6	29.9	30.5	28.6	29.1	30.3	29.7	30.4	+0.7	36.1	36.8	35.9	32.5	31.7	31.2	31.8	31.9	32.9	32.3	-0.6
Have five or more drinks once or twice each weekend	59.1	58.0	57.7	54.7	54.1	51.8	55.6	56.0	55.3	55.9	+0.6	54.7	55.9	54.9	52.9	52.0	50.9	51.8	52.5	51.9	51.0	-0.9
Smoke one or more packs of cigarettes per day ^d	51.6	50.8	52.7	50.8	49.8	50.4	52.6	54.3	54.8	58.8	+4.0ss	60.3	59.3	60.7	59.0	57.0	57.9	59.9	61.9	62.7	65.9	+3.3s
Use smokeless tobacco regularly	35.1	35.1	36.9	35.5	33.5	34.0	35.2	36.5	37.1	39.0	+1.9	40.3	39.6	44.2	42.2	38.2	41.0	42.2	42.8	44.2	46.7	+2.5s
Take steroids ^e	64.2	69.5	70.2	67.6	—	—	—	—	—	—	—	67.1	72.7	73.4	72.5	—	—	—	—	—	—	—
<i>Approx. N (in thousands) = 17.4 18.7 18.4 17.4 17.5 17.9 18.8 18.1 16.7 16.7 14.7 14.8 15.3 15.9 17.0 15.7 15.6 15.0 13.6 14.3</i>																						

NOTES: Level of significance of difference between the two most recent classes: s = .05, ss = .01, sss = .001. '—' indicates data not available. Any apparent inconsistency between the change estimate and the prevalence of use estimates for the two most recent classes is due to rounding error.

SOURCE: The Monitoring the Future Study, the University of Michigan.

^aAnswer alternatives were: (1) No risk, (2) Slight risk, (3) Moderate risk, (4) Great risk, and (5) Can't say, drug unfamiliar.

^bBeginning in 1997, data based on two-thirds of N indicated due to changes in questionnaire forms.

^cData based on one of two forms in 1993–96; N is one-half of N indicated. Beginning in 1997, data based on one-third of N indicated due to changes in questionnaire forms.

^dBeginning in 1999, data based on two-thirds of N indicated due to changes in questionnaire forms.

^eData based on two forms in 1991 and 1992. Data based on one of two forms in 1993 and 1994; N is one-half of N indicated.

TABLE 9

Long-Term Trends in Harmfulness of Drugs as Perceived by Twelfth Graders

<i>How much do you think people risk harming themselves (physically or in other ways), if they . . .</i>	Percentage saying "great risk" ^a																												
	Class of 1975	Class of 1976	Class of 1977	Class of 1978	Class of 1979	Class of 1980	Class of 1981	Class of 1982	Class of 1983	Class of 1984	Class of 1985	Class of 1986	Class of 1987	Class of 1988	Class of 1989	Class of 1990	Class of 1991	Class of 1992	Class of 1993	Class of 1994	Class of 1995	Class of 1996	Class of 1997	Class of 1998	Class of 1999	Class of 2000	'99-'00 change		
Try marijuana once or twice	15.1	11.4	9.5	8.1	9.4	10.0	13.0	11.5	12.7	14.7	14.8	15.1	18.4	19.0	23.6	23.1	27.1	24.5	21.9	19.5	16.3	15.6	14.9	16.7	15.7	13.7	-1.9		
Smoke marijuana occasionally	18.1	15.0	13.4	12.4	13.5	14.7	19.1	18.3	20.6	22.6	24.5	25.0	30.4	31.7	36.5	36.9	40.6	39.6	35.6	30.1	25.6	25.9	24.7	24.4	23.9	23.4	-0.4		
Smoke marijuana regularly	43.3	38.6	36.4	34.9	42.0	50.4	57.6	60.4	62.8	66.9	70.4	71.3	73.5	77.0	77.5	77.8	78.6	76.5	72.5	65.0	60.8	59.9	58.1	58.5	57.4	58.3	+0.9		
Try LSD once or twice	49.4	45.7	43.2	42.7	41.6	43.9	45.5	44.9	44.7	45.4	43.5	42.0	44.9	45.7	46.0	44.7	46.6	42.3	39.5	38.8	36.4	36.2	34.7	37.4	34.9	34.3	-0.7		
Take LSD regularly	81.4	80.8	79.1	81.1	82.4	83.0	83.5	83.5	83.2	83.8	82.9	82.6	83.8	84.2	84.3	84.5	84.3	81.8	79.4	79.1	78.1	77.8	76.6	76.5	76.1	75.9	-0.2		
Try PCP once or twice	—	—	—	—	—	—	—	—	—	—	—	—	55.6	58.8	56.6	55.2	51.7	54.8	50.8	51.5	49.1	51.0	48.8	46.8	44.8	45.0	+0.1		
Try MDMA once or twice	—	—	—	—	—	—	—	—	—	—	—	—	—	—	—	—	—	—	—	—	—	—	33.8	34.5	35.0	37.9	+2.9		
Try cocaine once or twice	42.6	39.1	35.6	33.2	31.5	31.3	32.1	32.8	33.0	35.7	34.0	33.5	47.9	51.2	54.9	59.4	59.4	56.8	57.6	57.2	53.7	54.2	53.6	54.6	52.1	51.1	-1.0		
Take cocaine occasionally	—	—	—	—	—	—	—	—	—	—	—	—	54.2	66.8	69.2	71.8	73.9	75.5	75.1	73.3	73.7	70.8	72.1	72.4	70.1	70.1	69.5	-0.6	
Take cocaine regularly	73.1	72.3	68.2	68.2	69.5	69.2	71.2	73.0	74.3	78.8	79.0	82.2	88.5	89.2	90.2	91.1	90.4	90.2	90.1	89.3	87.9	88.3	87.1	86.3	85.8	86.2	+0.4		
Try crack once or twice	—	—	—	—	—	—	—	—	—	—	—	—	57.0	62.1	62.9	64.3	60.6	62.4	57.6	58.4	54.6	56.0	54.0	52.2	48.2	48.4	+0.2		
Take crack occasionally	—	—	—	—	—	—	—	—	—	—	—	—	70.4	73.2	75.3	80.4	76.5	76.3	73.9	73.8	72.8	71.4	70.3	68.7	67.3	65.8	-1.5		
Take crack regularly	—	—	—	—	—	—	—	—	—	—	—	—	84.6	84.8	85.6	91.6	90.1	89.3	87.5	89.6	88.6	88.0	86.2	85.3	85.4	85.3	0.0		
Try cocaine powder once or twice	—	—	—	—	—	—	—	—	—	—	—	—	45.3	51.7	53.8	53.9	53.6	57.1	53.2	55.4	52.0	53.2	51.4	48.5	46.1	47.0	+0.9		
Take cocaine powder occasionally	—	—	—	—	—	—	—	—	—	—	—	—	56.8	61.9	65.8	71.1	69.8	70.8	68.6	70.6	69.1	68.8	67.7	65.4	64.2	64.7	+0.5		
Take cocaine powder regularly	—	—	—	—	—	—	—	—	—	—	—	—	81.4	82.9	83.9	90.2	88.9	88.4	87.0	88.6	87.8	86.8	86.0	84.1	84.6	85.5	+0.9		
Try heroin once or twice	60.1	58.9	55.8	52.9	50.4	52.1	52.9	51.1	50.8	49.8	47.3	45.8	53.6	54.0	53.8	55.4	55.2	50.9	50.7	52.8	50.9	52.5	56.7	57.8	56.0	54.2	-1.7		
Take heroin occasionally	75.6	75.6	71.9	71.4	70.9	70.9	72.2	69.8	71.8	70.7	69.8	68.2	74.6	73.8	75.5	76.6	74.9	74.2	72.0	72.1	71.0	74.8	76.3	76.9	77.3	74.6	-2.8		
Take heroin regularly	87.2	88.6	86.1	86.6	87.5	86.2	87.5	86.0	86.1	87.2	86.0	87.1	88.7	88.8	89.5	90.2	89.6	89.2	88.3	88.0	87.2	89.5	88.9	89.1	89.9	89.2	-0.7		
Try amphetamines once or twice	35.4	33.4	30.8	29.9	29.7	29.7	26.4	25.3	24.7	25.4	25.2	25.1	29.1	29.6	32.8	32.2	36.3	32.6	31.3	31.4	28.8	30.8	31.0	35.3	32.2	32.6	+0.4		
Take amphetamines regularly	69.0	67.3	66.6	67.1	69.9	69.1	66.1	64.7	64.8	67.1	67.2	67.3	69.4	69.8	71.2	71.2	74.1	72.4	69.9	67.0	65.9	66.8	66.0	67.7	66.4	66.3	-0.1		
Try crystal meth. (ice) once or twice	—	—	—	—	—	—	—	—	—	—	—	—	—	—	—	—	61.6	61.9	57.5	58.3	54.4	55.3	54.4	52.7	51.2	51.3	+0.1		
Try barbiturates once or twice	34.8	32.5	31.2	31.3	30.7	30.9	28.4	27.5	27.0	27.4	26.1	25.4	30.9	29.7	32.2	32.4	35.1	32.2	29.2	29.9	26.3	29.1	26.9	29.0	26.1	25.0	-1.1		
Take barbiturates regularly	69.1	67.7	68.6	68.4	71.6	72.2	69.9	67.6	67.7	68.5	68.3	67.2	69.4	69.6	70.5	70.2	70.5	70.2	66.1	63.3	61.6	60.4	56.8	56.3	54.1	52.3	-1.7		
Try one or two drinks of an alcoholic beverage (beer, wine, liquor)	5.3	4.8	4.1	3.4	4.1	3.8	4.6	3.5	4.2	4.6	5.0	4.6	6.2	6.0	6.0	8.3	9.1	8.6	8.2	7.6	5.9	7.3	6.7	8.0	8.3	6.4	-1.9s		
Take one or two drinks nearly every day	21.5	21.2	18.5	19.6	22.6	20.3	21.6	21.6	21.6	23.0	24.4	25.1	26.2	27.3	28.5	31.3	32.7	30.6	28.2	27.0	24.8	25.1	24.8	24.3	21.8	21.7	-0.1		
Take four or five drinks nearly every day	63.5	61.0	62.9	63.1	66.2	65.7	64.5	65.5	66.8	68.4	69.8	66.5	69.7	68.5	69.8	70.9	69.5	70.5	67.8	66.2	62.8	65.6	63.0	62.1	61.1	59.9	-1.2		
Have five or more drinks once or twice each weekend	37.8	37.0	34.7	34.5	34.9	35.9	36.3	36.0	38.6	41.7	43.0	39.1	41.9	42.6	44.0	47.1	48.6	49.0	48.3	46.5	45.2	49.5	43.0	42.8	43.1	42.7	-0.4		
Smoke one or more packs of cigarettes per day	51.3	56.4	58.4	59.0	63.0	63.7	63.3	60.5	61.2	63.8	66.5	66.0	68.6	68.0	67.2	68.2	69.4	69.2	69.5	67.6	65.6	68.2	68.7	70.8	70.8	73.1	+2.3		
Use smokeless tobacco regularly	—	—	—	—	—	—	—	—	—	—	—	—	25.8	30.0	33.2	32.9	34.2	37.4	35.5	38.9	36.6	33.2	37.4	38.6	40.9	41.1	42.2	+1.1	
Take steroids	—	—	—	—	—	—	—	—	—	—	—	—	—	—	—	—	63.8	69.9	65.6	70.7	69.1	66.1	66.4	67.6	67.2	68.1	62.1	57.9	-4.3s

Approx. N = 2804 2918 3052 3770 3250 3234 3604 3557 3305 3262 3250 3020 3315 3276 2796 2553 2549 2684 2759 2591 2603 2449 2579 2564 2306 2130

NOTES: Level of significance of difference between the two most recent classes: s = .05, ss = .01, sss = .001. '—' indicates data not available.

Any apparent inconsistency between the change estimate and the prevalence of use estimates for the two most recent classes is due to rounding error.

SOURCE: The Monitoring the Future Study, the University of Michigan.

^aAnswer alternatives were: (1) No risk, (2) Slight risk, (3) Moderate risk, (4) Great risk, and (5) Can't say, drug unfamiliar.

TABLE 10
Trends in Disapproval of Drug Use by Eighth, Tenth, and Twelfth Graders, 1991–2000

<i>Do you disapprove of people who . . .</i>	Percentage who "disapprove" or "strongly disapprove" ^a																					
	8th Grade											10th Grade										
	1991	1992	1993	1994	1995	1996	1997	1998	1999	2000	'99-'00 change	1991	1992	1993	1994	1995	1996	1997	1998	1999	2000	'99-'00 change
Try marijuana once or twice	84.6	82.1	79.2	72.9	70.7	67.5	67.6	69.0	70.7	72.5	+1.8s	74.6	74.8	70.3	62.4	59.8	55.5	54.1	56.0	56.2	54.9	-1.3
Smoke marijuana occasionally	89.5	88.1	85.7	80.9	79.7	76.5	78.1	78.4	79.3	80.6	+1.3	83.7	83.6	79.4	72.3	70.0	66.9	66.2	67.3	68.2	67.2	-1.0
Smoke marijuana regularly	92.1	90.8	88.9	85.3	85.1	82.8	84.6	84.5	84.5	85.3	+0.8	90.4	90.0	87.4	82.2	81.1	79.7	79.7	80.1	79.8	79.1	-0.8
Try inhalants once or twice ^b	84.9	84.0	82.5	81.6	81.8	82.9	84.1	83.0	85.2	85.4	+0.2	85.2	85.6	84.8	84.9	84.5	86.0	86.9	85.6	88.4	87.5	-0.9
Take inhalants regularly ^c	90.6	90.0	88.9	88.1	88.8	89.3	90.3	89.5	90.3	90.2	-0.1	91.0	91.5	90.9	91.0	90.9	91.7	91.7	91.1	92.4	91.8	-0.6
Try LSD once or twice ^c	—	—	77.1	75.2	71.6	70.9	72.1	69.1	69.4	66.7	-2.8	—	—	82.1	79.3	77.9	76.8	76.6	76.7	77.8	77.0	-0.8
Take LSD regularly ^d	—	—	79.8	78.4	75.8	75.3	76.3	72.5	72.5	69.3	-3.2s	—	—	86.8	85.6	84.8	84.5	83.4	82.9	84.3	82.1	-2.3
Try crack once or twice ^c	91.7	90.7	89.1	86.9	85.9	85.0	85.7	85.4	86.0	85.4	-0.6	92.5	92.5	91.4	89.9	88.7	88.2	87.4	87.1	87.8	87.1	-0.7
Take crack occasionally ^c	93.3	92.5	91.7	89.9	89.8	89.3	90.3	89.5	89.9	88.8	-1.1	94.3	94.4	93.6	92.5	91.7	91.9	91.0	90.6	91.5	90.9	-0.6
Try cocaine powder once or twice ^c	91.2	89.6	88.5	86.1	85.3	83.9	85.1	84.5	85.2	84.8	-0.4	90.8	91.1	90.0	88.1	86.8	86.1	85.1	84.9	86.0	84.8	-1.2
Take cocaine powder occasionally ^c	93.1	92.4	91.6	89.7	89.7	88.7	90.1	89.3	89.9	88.8	-1.0	94.0	94.0	93.2	92.1	91.4	91.1	90.4	89.7	90.7	89.9	-0.8
Try heroin once or twice without using a needle ^d	—	—	—	—	85.8	85.0	87.7	87.3	88.0	87.2	-0.8	—	—	—	—	89.7	89.5	89.1	88.6	90.1	90.1	+0.1
Take heroin occasionally without using a needle ^d	—	—	—	—	88.5	87.7	90.1	89.7	90.2	88.9	-1.2	—	—	—	—	91.6	91.7	91.4	90.5	91.8	92.3	+0.5
Try one or two drinks of an alcoholic beverage (beer, wine, liquor)	51.7	52.2	50.9	47.8	48.0	45.5	45.7	47.5	48.3	48.7	+0.4	37.6	39.9	38.5	36.5	36.1	34.2	33.7	34.7	35.1	33.4	-1.7
Take one or two drinks nearly every day	82.2	81.0	79.6	76.7	75.9	74.1	76.6	76.9	77.0	77.8	+0.8	81.7	81.7	78.6	75.2	75.4	73.8	75.4	74.6	75.4	73.8	-1.6
Have five or more drinks once or twice each weekend	85.2	83.9	83.3	80.7	80.7	79.1	81.3	81.0	80.3	81.2	+0.9	76.7	77.6	74.7	72.3	72.2	70.7	70.2	70.5	69.9	68.2	-1.7
Smoke one or more packs of cigarettes per day ^d	82.8	82.3	80.6	78.4	78.6	77.3	80.3	80.0	81.4	81.9	+0.5	79.4	77.8	76.5	73.9	73.2	71.6	73.8	75.3	76.1	76.7	+0.6
Use smokeless tobacco regularly	79.1	77.2	77.1	75.1	74.0	74.1	76.5	76.3	78.0	79.2	+1.1	75.4	74.6	73.8	71.2	71.0	71.0	72.3	73.2	75.1	75.8	+0.7
Take steroids ^e	89.8	90.3	89.9	87.9	—	—	—	—	—	—	—	90.0	91.0	91.2	90.8	—	—	—	—	—	—	—
<i>Approx. N (in thousands)</i>	17.4	18.5	18.4	17.4	17.6	18.0	18.8	18.1	16.7	16.7		14.8	14.8	15.3	15.9	17.0	15.7	15.6	15.0	13.6	14.3	

NOTES: Level of significance of difference between the two most recent classes: s = .05, ss = .01, sss = .001. '—' indicates data not available. Any apparent inconsistency between the change estimate and the prevalence of use estimates for the two years is due to rounding error.
 SOURCE: The Monitoring the Future Study, the University of Michigan.

^aAnswer alternatives were: (1) Don't disapprove, (2) Disapprove, and (3) Strongly disapprove. For 8th and 10th grades, there was another category—"Can't say, drug unfamiliar"—which was included in the calculation of these percentages. Percentages are shown for categories (2) and (3) combined.

^bBeginning in 1997, data based on two-thirds of N indicated due to changes in questionnaire forms.

^cData based on one of two forms in 1993–96; N is one-half of N indicated. Beginning in 1997, data based on one-third of N indicated due to changes in questionnaire forms.

^dBeginning in 1999, data based on two-thirds of N indicated due to changes in questionnaire forms.

^eData based on two forms in 1991 and 1992 and on one of two forms in 1993 and 1994; N is one-half of N indicated.

TABLE 11
Long-Term Trends in Disapproval of Drug Use by Twelfth Graders

<i>Do you disapprove of people (who are 18 or older) doing each of the following?^a</i>	Percentage "disapproving" ^b																								'99-'00 change		
	Class of 1975	Class of 1976	Class of 1977	Class of 1978	Class of 1979	Class of 1980	Class of 1981	Class of 1982	Class of 1983	Class of 1984	Class of 1985	Class of 1986	Class of 1987	Class of 1988	Class of 1989	Class of 1990	Class of 1991	Class of 1992	Class of 1993	Class of 1994	Class of 1995	Class of 1996	Class of 1997	Class of 1998		Class of 1999	Class of 2000
Try marijuana once or twice	47.0	38.4	33.4	33.4	34.2	39.0	40.0	45.5	46.3	49.3	51.4	54.6	56.6	60.8	64.6	67.8	68.7	69.9	63.3	57.6	56.7	52.5	51.0	51.6	48.8	52.5	+3.8s
Smoke marijuana occasionally	54.8	47.8	44.3	43.5	45.3	49.7	52.6	59.1	60.7	63.5	65.8	69.0	71.6	74.0	77.2	80.5	79.4	79.7	75.5	68.9	66.7	62.9	63.2	64.4	62.5	65.8	+3.4
Smoke marijuana regularly	71.9	69.5	65.5	67.5	69.2	74.6	77.4	80.6	82.5	84.7	85.5	86.6	89.2	89.3	89.8	91.0	89.3	90.1	87.6	82.3	81.9	80.0	78.8	81.2	78.6	79.7	+1.1
Try LSD once or twice	82.8	84.6	83.9	85.4	86.6	87.3	86.4	88.8	89.1	88.9	89.5	89.2	91.6	89.8	89.7	89.8	90.1	88.1	85.9	82.5	81.1	79.6	80.5	82.1	83.0	82.4	-0.5
Take LSD regularly	94.1	95.3	95.8	96.4	96.9	96.7	96.8	96.7	97.0	96.8	97.0	96.6	97.8	96.4	96.4	96.3	96.4	95.5	95.8	94.3	92.5	93.2	92.9	93.5	94.3	94.2	-0.1
Try MDMA once or twice	—	—	—	—	—	—	—	—	—	—	—	—	—	—	—	—	—	—	—	—	—	—	82.2	82.5	82.1	81.0	-1.2
Try cocaine once or twice	81.3	82.4	79.1	77.0	74.7	76.3	74.6	76.6	77.0	79.7	79.3	80.2	87.3	89.1	90.5	91.5	93.6	93.0	92.7	91.6	90.3	90.0	88.0	89.5	89.1	88.2	-0.9
Take cocaine regularly	93.3	93.9	92.1	91.9	90.8	91.1	90.7	91.5	93.2	94.5	93.8	94.3	96.7	96.2	96.4	96.7	97.3	96.9	97.5	96.6	96.1	95.6	96.0	95.6	94.9	95.5	+0.5
Try crack once or twice	—	—	—	—	—	—	—	—	—	—	—	—	—	—	—	92.3	92.1	93.1	89.9	89.5	91.4	87.4	87.0	86.7	87.6	87.5	-0.1
Take crack occasionally	—	—	—	—	—	—	—	—	—	—	—	—	—	—	—	94.3	94.2	95.0	92.8	92.8	94.0	91.2	91.3	90.9	92.3	91.9	-0.4
Take crack regularly	—	—	—	—	—	—	—	—	—	—	—	—	—	—	—	94.9	95.0	95.5	93.4	93.1	94.1	93.0	92.3	91.9	93.2	92.8	-0.4
Try cocaine powder once or twice	—	—	—	—	—	—	—	—	—	—	—	—	—	—	—	87.9	88.0	89.4	86.6	87.1	88.3	83.1	83.0	83.1	84.3	84.1	-0.2
Take cocaine powder occasionally	—	—	—	—	—	—	—	—	—	—	—	—	—	—	—	92.1	93.0	93.4	91.2	91.0	92.7	89.7	89.3	88.7	90.0	90.3	+0.3
Take cocaine powder regularly	—	—	—	—	—	—	—	—	—	—	—	—	—	—	—	93.7	94.4	94.3	93.0	92.5	93.8	92.9	91.5	91.1	92.3	92.6	+0.3
Try heroin once or twice	91.5	92.6	92.5	92.0	93.4	93.5	93.5	94.6	94.3	94.0	94.0	93.3	96.2	95.0	95.4	95.1	96.0	94.9	94.4	93.2	92.8	92.1	92.3	93.7	93.5	93.0	-0.5
Take heroin occasionally	94.8	96.0	96.0	96.4	96.8	96.7	97.2	96.9	96.9	97.1	96.8	96.6	97.9	96.9	97.2	96.7	97.3	96.8	97.0	96.2	95.7	95.0	95.4	96.1	95.7	96.0	+0.3
Take heroin regularly	96.7	97.5	97.2	97.8	97.9	97.6	97.8	97.5	97.7	98.0	97.6	97.6	98.1	97.2	97.4	97.5	97.8	97.2	97.5	97.1	96.4	96.3	96.4	96.6	96.4	96.6	+0.3
Try amphetamines once or twice	74.8	75.1	74.2	74.8	75.1	75.4	71.1	72.6	72.3	72.8	74.9	76.5	80.7	82.5	83.3	85.3	86.5	86.9	84.2	81.3	82.2	79.9	81.3	82.5	81.9	82.1	+0.2
Take amphetamines regularly	92.1	92.8	92.5	93.5	94.4	93.0	91.7	92.0	92.6	93.6	93.3	93.5	95.4	94.2	94.2	95.5	96.0	95.6	96.0	94.1	94.3	93.5	94.3	94.0	93.7	94.1	+0.4
Try barbiturates once or twice	77.7	81.3	81.1	82.4	84.0	83.9	82.4	84.4	83.1	84.1	84.9	86.8	89.6	89.4	89.3	90.5	90.6	90.3	89.7	87.5	87.3	84.9	86.4	86.0	86.6	85.9	-0.7
Take barbiturates regularly	93.3	93.6	93.0	94.3	95.2	95.4	94.2	94.4	95.1	95.1	95.5	94.9	96.4	95.3	95.3	96.4	97.1	96.5	97.0	96.1	95.2	94.8	95.3	94.6	94.7	95.2	+0.6
Try one or two drinks of an alcoholic beverage (beer, wine, liquor)	21.6	18.2	15.6	15.6	15.8	16.0	17.2	18.2	18.4	17.4	20.3	20.9	21.4	22.6	27.3	29.4	29.8	33.0	30.1	28.4	27.3	26.5	26.1	24.5	24.6	25.2	+0.6
Take one or two drinks nearly every day	67.6	68.9	66.8	67.7	68.3	69.0	69.1	69.9	68.9	72.9	70.9	72.8	74.2	75.0	76.5	77.9	76.5	75.9	77.8	73.1	73.3	70.8	70.0	69.4	67.2	70.0	+2.8
Take four or five drinks nearly every day	88.7	90.7	88.4	90.2	91.7	90.8	91.8	90.9	90.0	91.0	92.0	91.4	92.2	92.8	91.6	91.9	90.6	90.8	90.6	89.8	88.8	89.4	88.6	86.7	86.9	88.4	+1.5
Have five or more drinks once or twice each weekend	60.3	58.6	57.4	56.2	56.7	55.6	55.5	58.8	56.6	59.6	60.4	62.4	62.0	65.3	66.5	68.9	67.4	70.7	70.1	65.1	66.7	64.7	65.0	63.8	62.7	65.2	+2.5
Smoke one or more packs of cigarettes per day	67.5	65.9	66.4	67.0	70.3	70.8	69.9	69.4	70.8	73.0	72.3	75.4	74.3	73.1	72.4	72.8	71.4	73.5	70.6	69.8	68.2	67.2	67.1	68.8	69.5	70.1	+0.6
Take steroids	—	—	—	—	—	—	—	—	—	—	—	—	—	—	—	90.8	90.5	92.1	92.1	91.9	91.0	91.7	91.4	90.8	88.9	88.8	-0.1
<i>Approx. N = 2677 2957 3085 3686 3221 3261 3610 3651 3341 3254 3265 3113 3302 3311 2799 2566 2547 2645 2723 2588 2603 2399 2601 2545 2310 2150</i>																											

NOTES: Level of significance of difference between the two most recent classes: s = .05, ss = .01, sss = .001. '—' indicates data not available. Any apparent inconsistency between the change estimate and the prevalence of use estimates for the two most recent classes is due to rounding error.

SOURCE: The Monitoring the Future Study, the University of Michigan.

^aThe 1975 question asked about people who are "20 or older."

^bAnswer alternatives were: (1) Don't disapprove, (2) Disapprove, and (3) Strongly disapprove. Percentages are shown for categories (2) and (3) combined.

TABLE 12

Trends in Perceived Availability of Drugs by Eighth, Tenth, and Twelfth Graders, 1992–2000

How difficult do you think it would be for you to get each of the following types of drugs, if you wanted some?	Percent saying “fairly easy” or “very easy” to get ^a																			
	8th Grade										10th Grade									
	1992	1993	1994	1995	1996	1997	1998	1999	2000	'99-'00 change	1992	1993	1994	1995	1996	1997	1998	1999	2000	'99-'00 change
Marijuana	42.3	43.8	49.9	52.4	54.8	54.2	50.6	48.4	47.0	-1.5	65.2	68.4	75.0	78.1	81.1	80.5	77.9	78.2	77.7	-0.6
LSD	21.5	21.8	21.8	23.5	23.6	22.7	19.3	18.3	17.0	-1.3	33.6	35.8	36.1	39.8	41.0	38.3	34.0	34.3	32.9	-1.3
PCP ^b	18.0	18.5	17.7	19.0	19.6	19.2	17.5	17.1	16.0	-1.2	23.7	23.4	23.8	24.7	26.8	24.8	23.9	24.5	25.0	+0.5
Crack	25.6	25.9	26.9	28.7	27.9	27.5	26.5	25.9	24.9	-1.0	33.7	33.0	34.2	34.6	36.4	36.0	36.3	36.5	34.0	-2.4s
Cocaine powder	25.7	25.9	26.4	27.8	27.2	26.9	25.7	25.0	23.9	-1.1	35.0	34.1	34.5	35.3	36.9	37.1	36.8	36.7	34.5	-2.2s
Heroin	19.7	19.8	19.4	21.1	20.6	19.8	18.0	17.5	16.5	-1.0	24.3	24.3	24.7	24.6	24.8	24.4	23.0	23.7	22.3	-1.5
Other narcotics ^b	19.8	19.0	18.3	20.3	20.0	20.6	17.1	16.2	15.6	-0.6	26.9	24.9	26.9	27.8	29.4	29.0	26.1	26.6	27.2	+0.6
Amphetamines	32.2	31.4	31.0	33.4	32.6	30.6	27.3	25.9	25.5	-0.4	43.4	46.4	46.6	47.7	47.2	44.6	41.0	41.3	40.9	-0.5
Crystal meth. (ice) ^b	16.0	15.1	14.1	16.0	16.3	15.7	16.0	14.7	14.9	+0.2	18.8	16.4	17.8	20.7	22.6	22.9	22.1	21.8	22.8	+0.9
Barbiturates	27.4	26.1	25.3	26.5	25.6	24.4	21.1	20.8	19.7	-1.0	38.0	38.8	38.3	38.8	38.1	35.6	32.7	33.2	32.4	-0.8
Tranquilizers	22.9	21.4	20.4	21.3	20.4	19.6	18.1	17.3	16.2	-1.1	31.6	30.5	29.8	30.6	30.3	28.7	26.5	26.8	27.6	+0.8
Alcohol	76.2	73.9	74.5	74.9	75.3	74.9	73.1	72.3	70.6	-1.8s	88.6	88.9	89.8	89.7	90.4	89.0	88.0	88.2	87.7	-0.5
Cigarettes	77.8	75.5	76.1	76.4	76.9	76.0	73.6	71.5	68.7	-2.8sss	89.1	89.4	90.3	90.7	91.3	89.6	88.1	88.3	86.8	-1.5s
Steroids	24.0	22.7	23.1	23.8	24.1	23.6	22.3	22.6	22.3	-0.3	37.6	33.6	33.6	34.8	34.8	34.2	33.0	35.9	35.4	-0.5
	Approx. N = 8355 16775 16119 15496 16318 16482 16208 15397 15180										7014 14652 15192 16209 14887 14856 14423 13112 13690									

NOTES: Level of significance of difference between the two most recent classes: s = .05, ss = .01, sss = .001. ‘—’ indicates data not available. Any apparent inconsistency between the change estimate and the prevalence of use estimates for the two most recent classes is due to rounding error.

SOURCE: The Monitoring the Future Study, the University of Michigan.

^aAnswer alternatives were: (1) Probably impossible, (2) Very difficult, (3) Fairly difficult, (4) Fairly easy, and (5) Very easy. For 8th and 10th grades, there was another category—“Can’t say, drug unfamiliar”—which was included in the calculation of these percentages.

^bBeginning in 1993, data based on half of forms; N is one-half of N indicated.

FIGURE 1

**Trends in Annual Prevalence of an Illicit Drug Use Index
Eighth, Tenth, and Twelfth Graders**

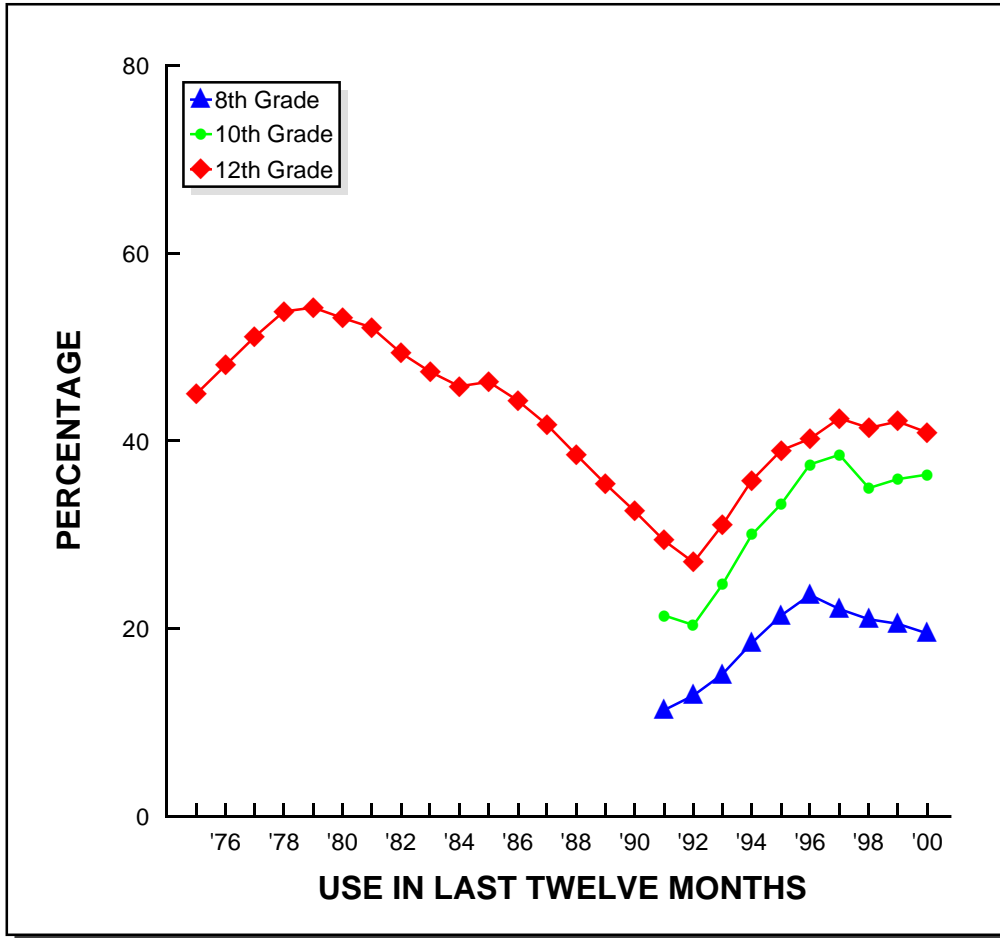


FIGURE 2
Marijuana: Trends in Annual Use, Risk, Disapproval, and Availability
 Eighth, Tenth, and Twelfth Graders

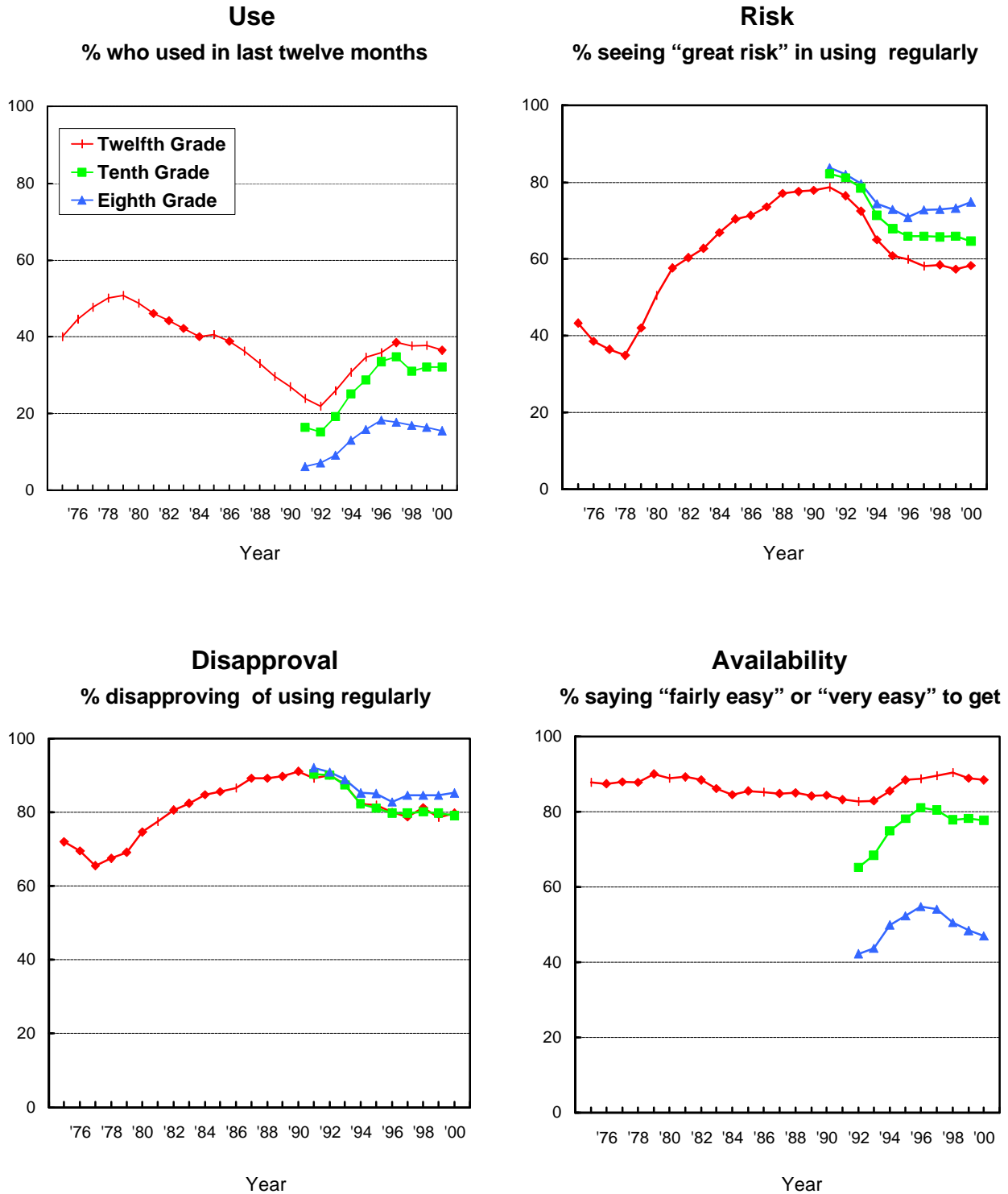


FIGURE 3
Inhalants: Trends in Annual Use, Risk, and Disapproval
 Eighth, Tenth, and Twelfth Graders

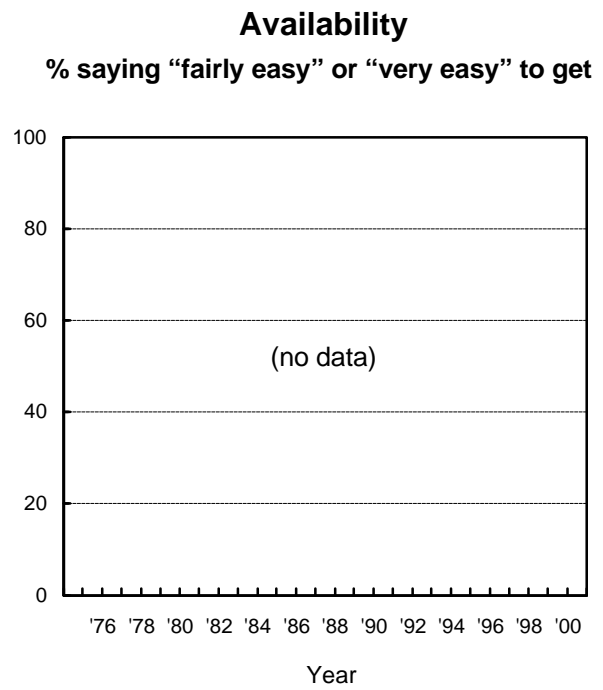
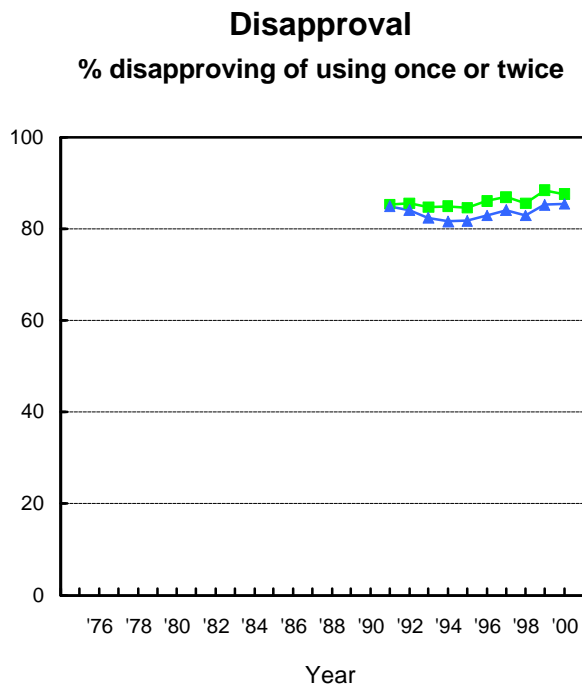
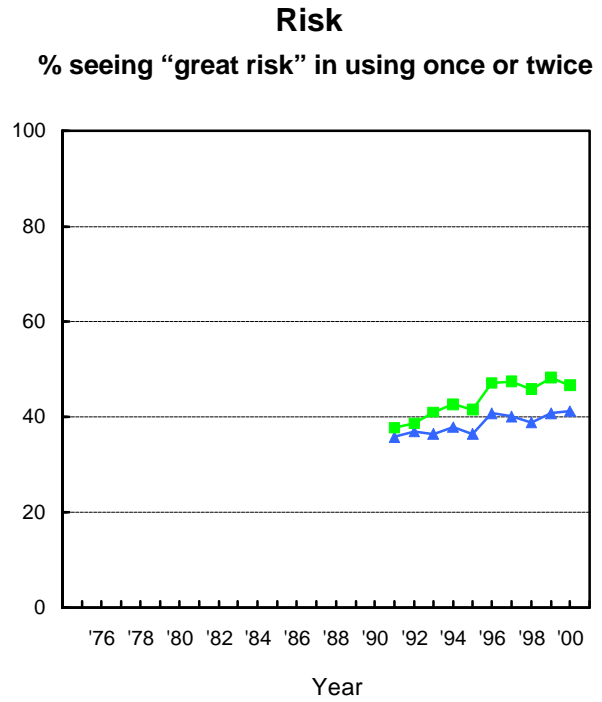
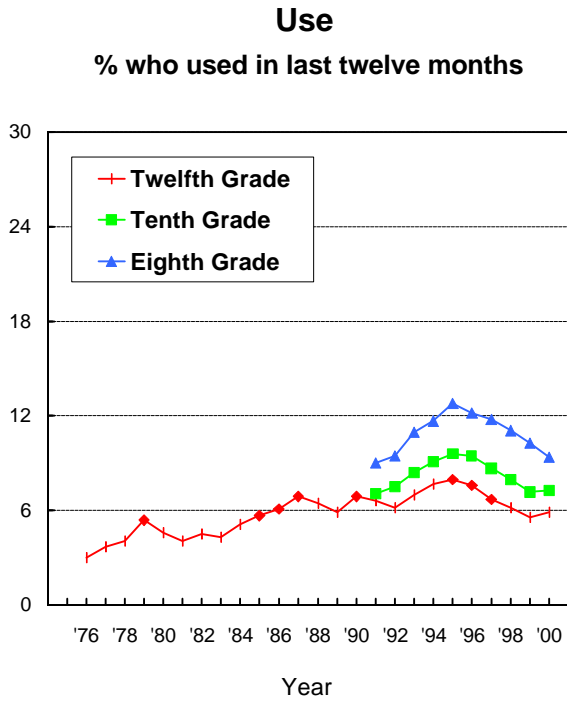


FIGURE 4
LSD: Trends in Annual Use, Risk, Disapproval, and Availability
 Eighth, Tenth, and Twelfth Graders

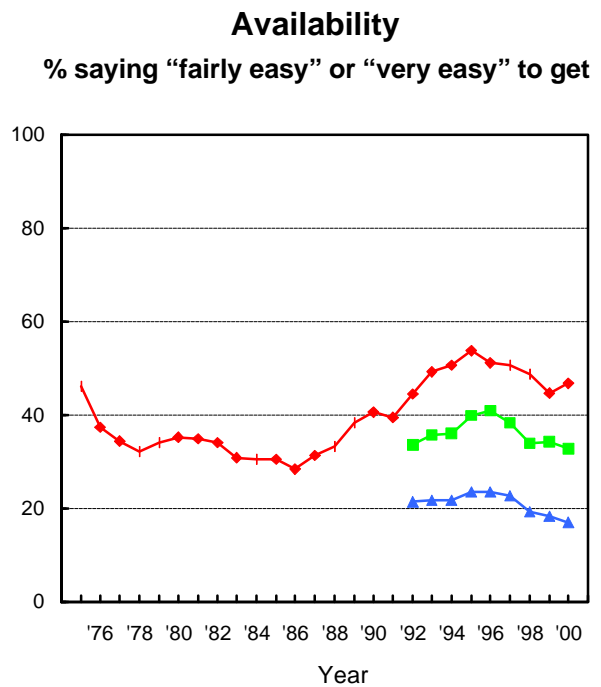
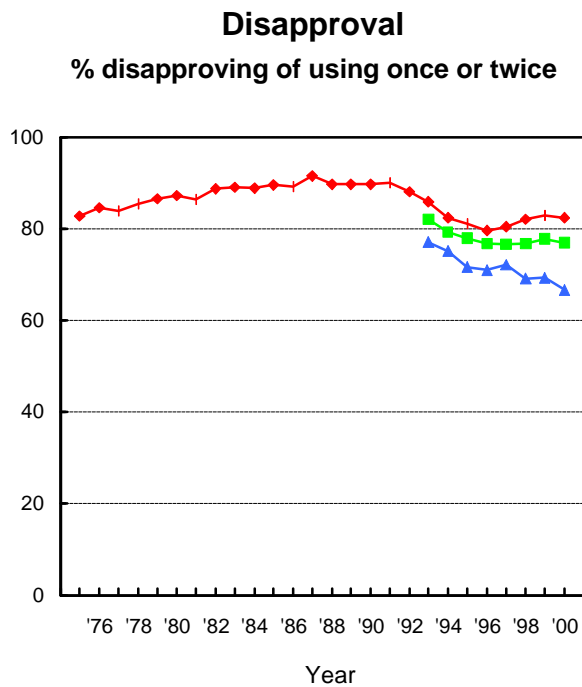
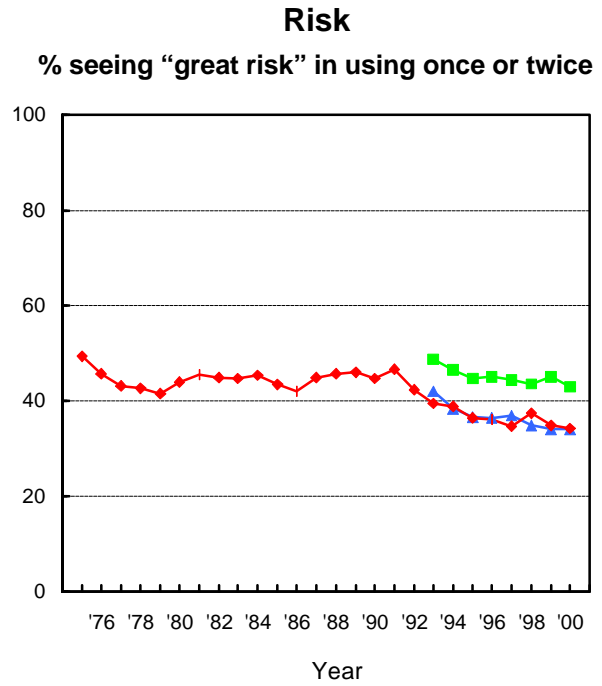
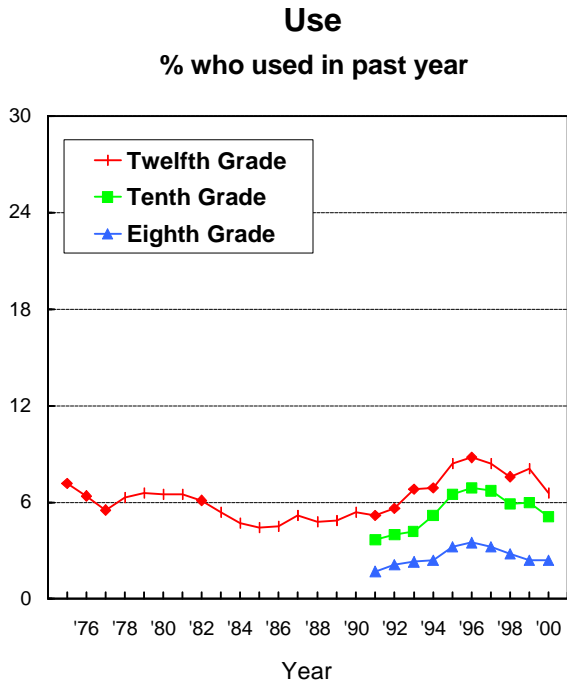


FIGURE 5
MDMA (Ecstasy): Trends in Annual Use, Risk, Disapproval, and Availability
 Eighth, Tenth, and Twelfth Graders

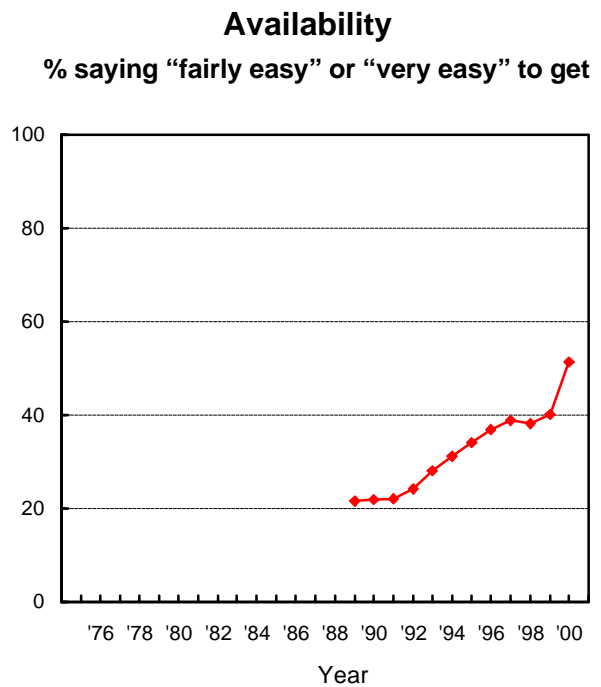
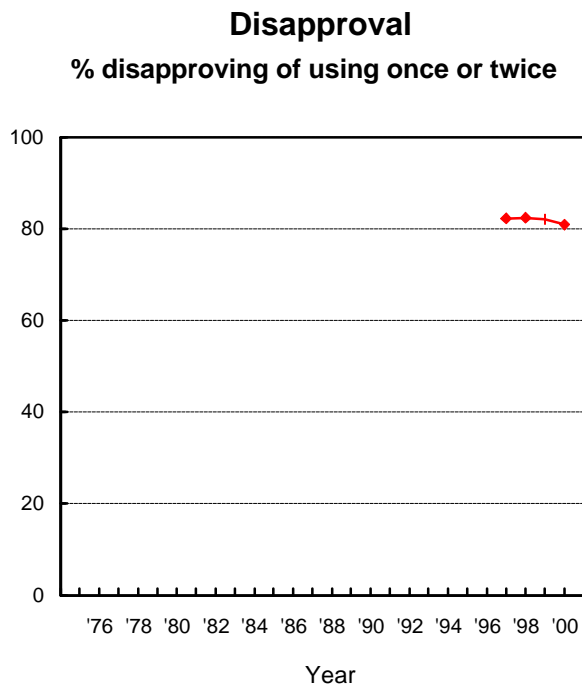
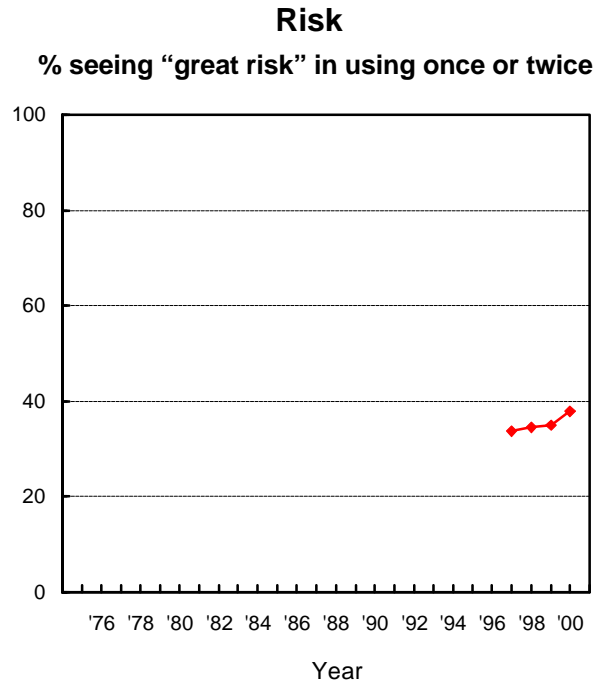
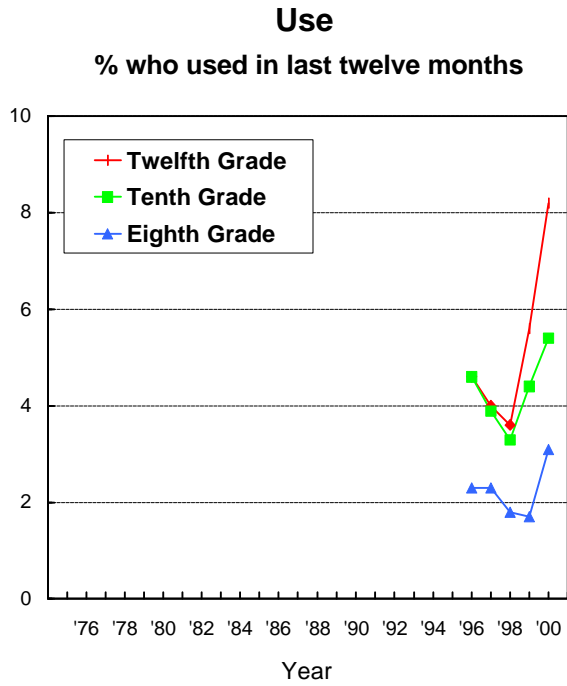


FIGURE 6
Crack: Trends in Annual Use, Risk, Disapproval, and Availability
 Eighth, Tenth, and Twelfth Graders

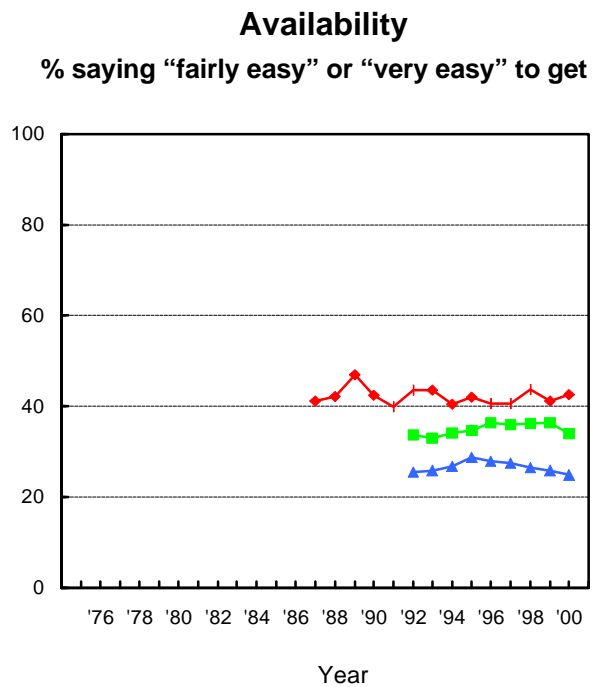
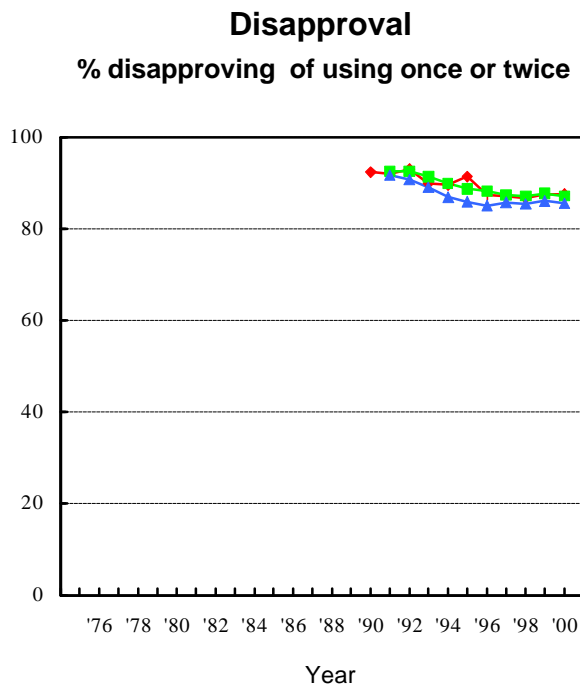
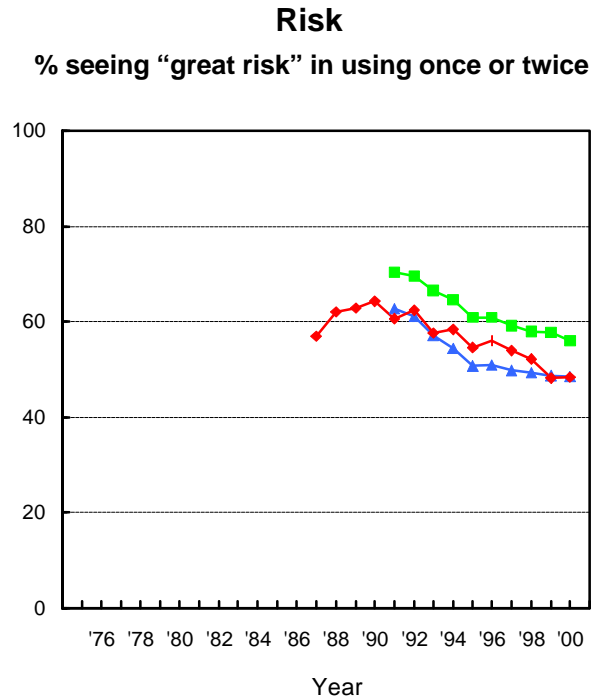
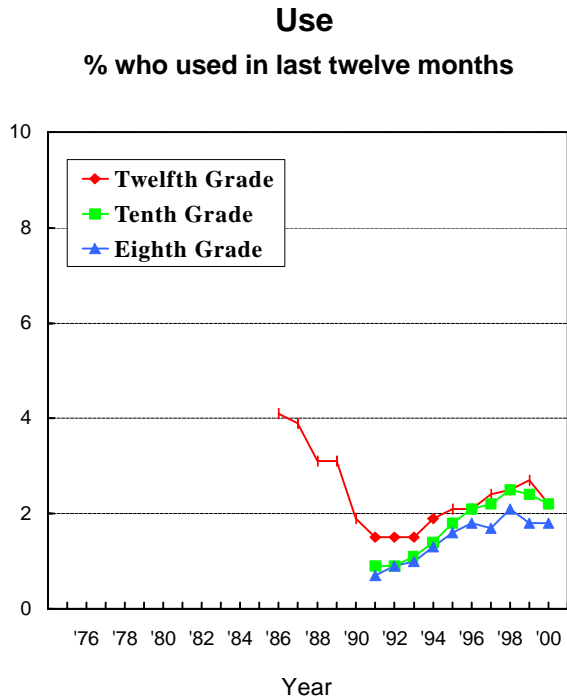


FIGURE 7
Cocaine Powder: Trends in Annual Use, Risk, Disapproval, and Availability
 Eighth, Tenth, and Twelfth Graders

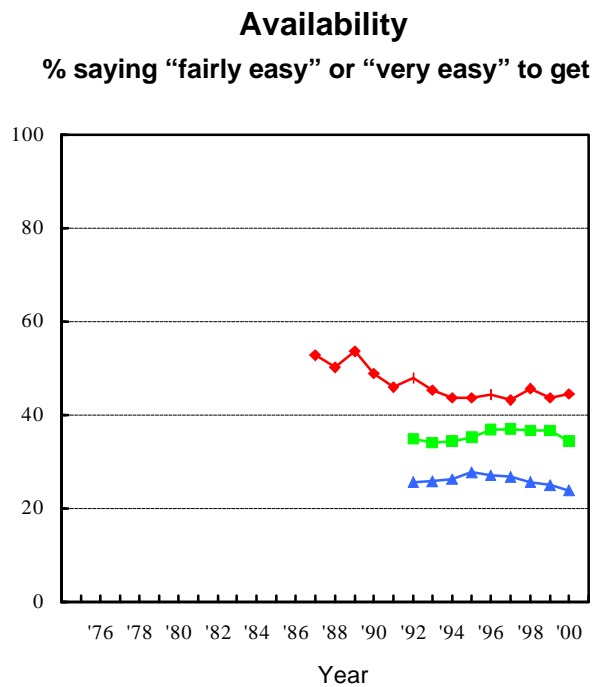
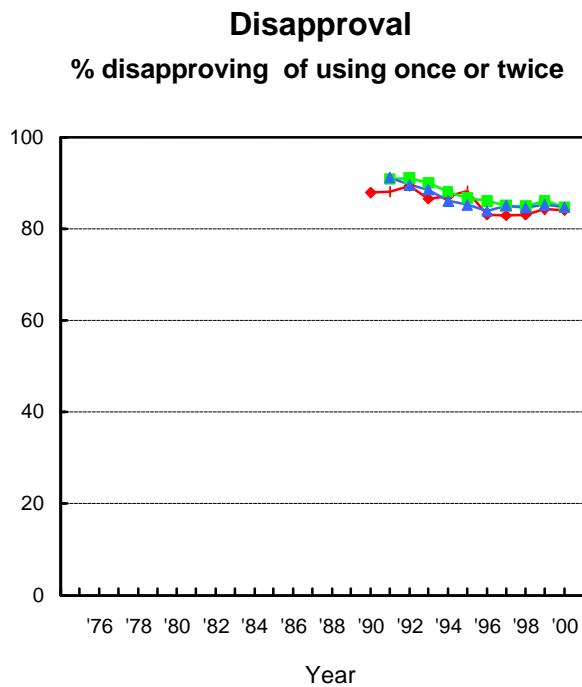
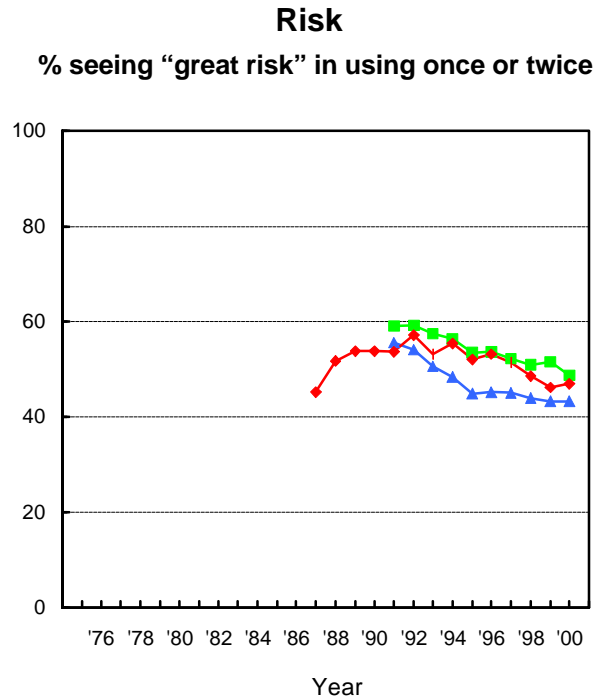
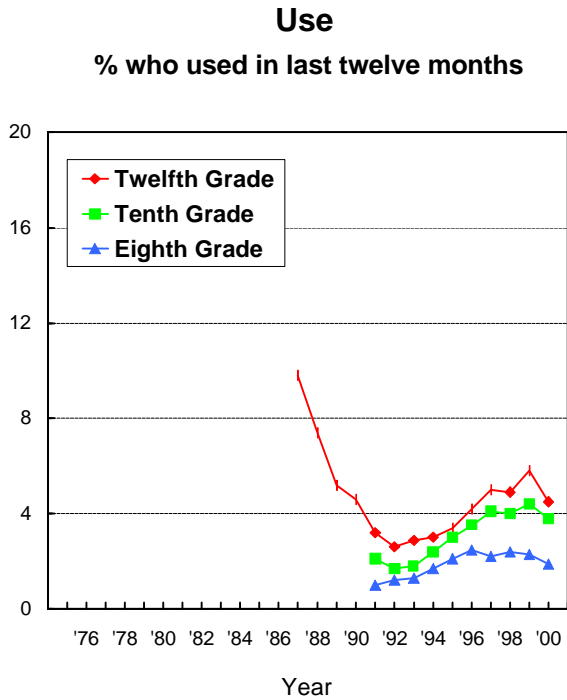
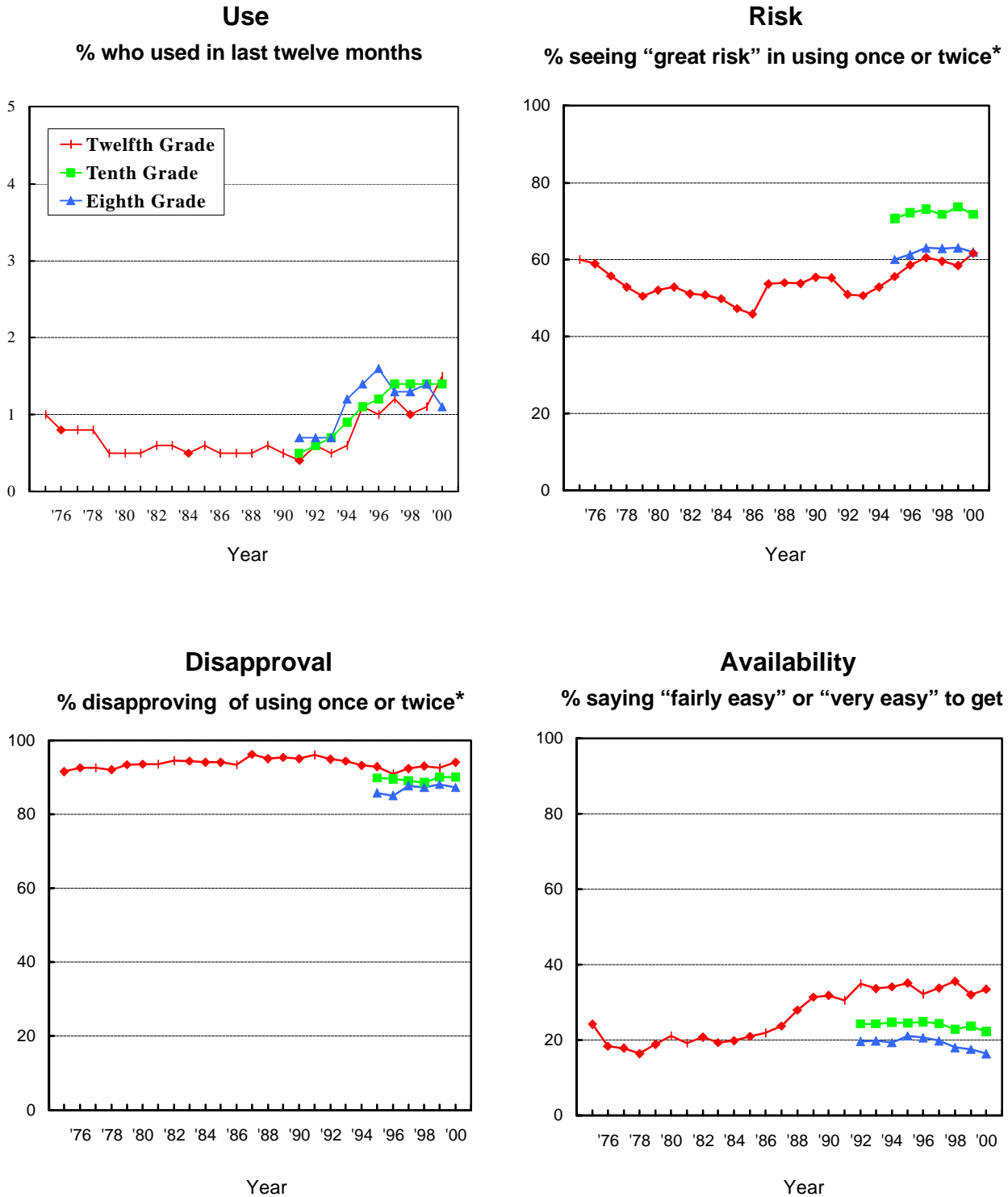


FIGURE 8
Heroin: Trends in Annual Use, Risk, Disapproval, and Availability
 Eighth, Tenth, and Twelfth Graders



*Prior to 1995, the question asked about heroin use in general. Since 1995, the question has asked about heroin use without a needle.

FIGURE 9
Tranquilizers: Trends in Annual Use and Availability
 Eighth, Tenth, and Twelfth Graders

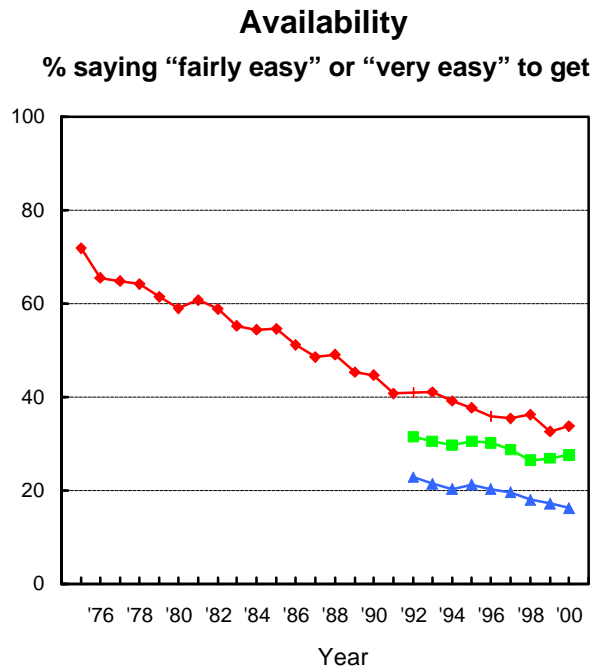
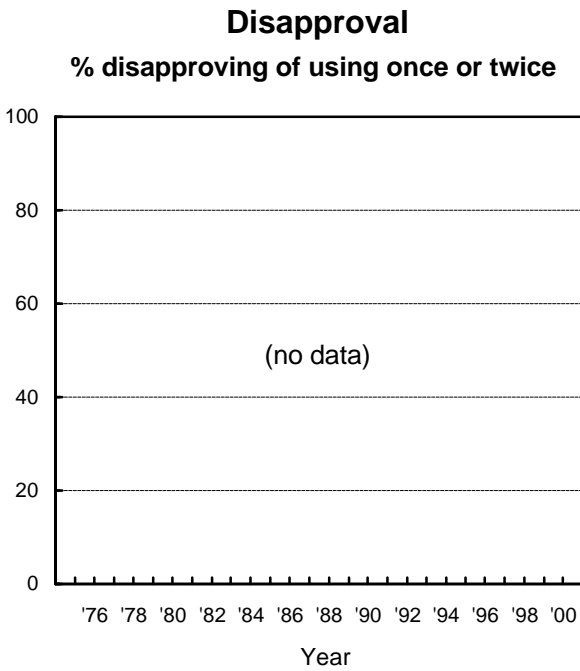
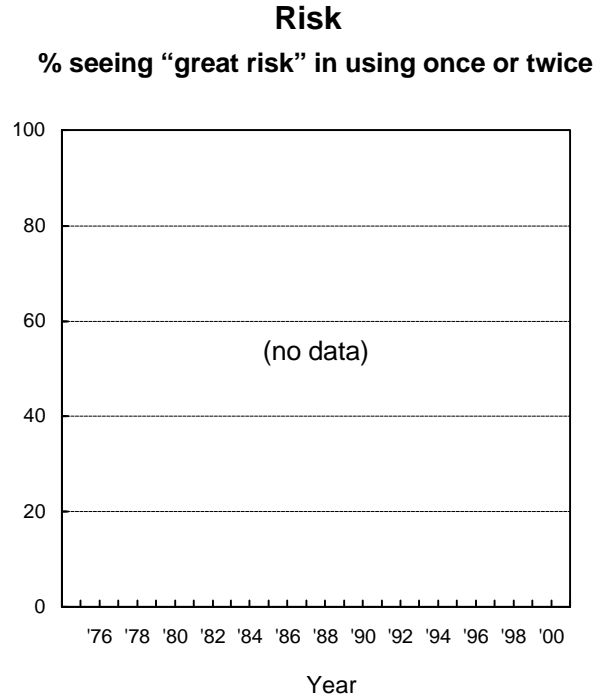
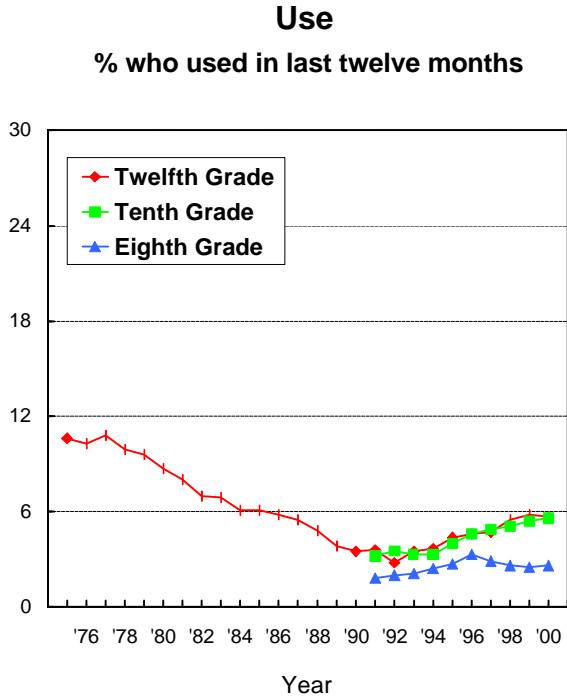


FIGURE 10
Alcohol: Trends in Binge Drinking, Risk, Disapproval, and Availability
 Eighth, Tenth, and Twelfth Graders

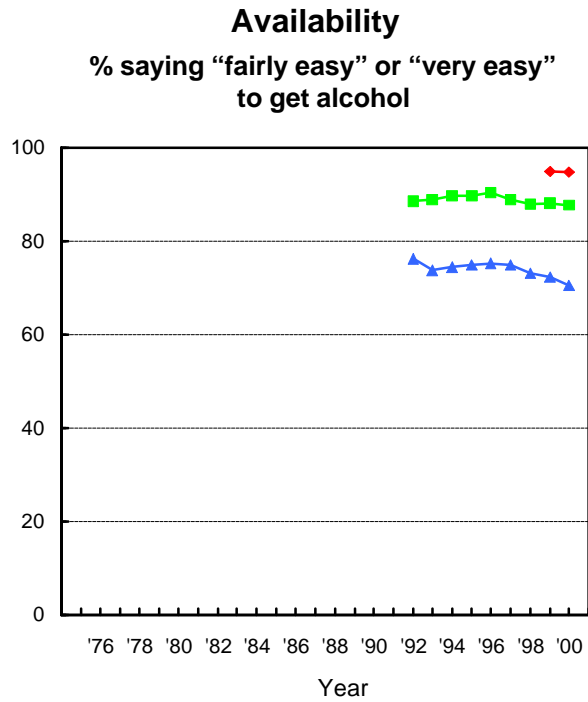
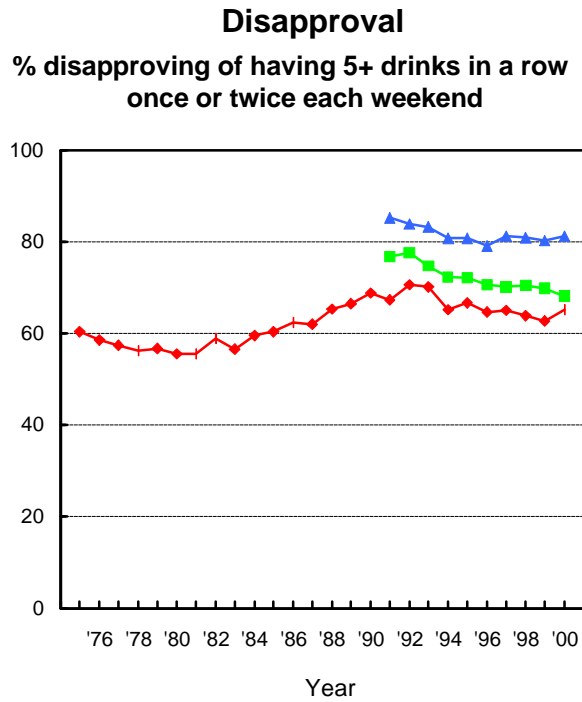
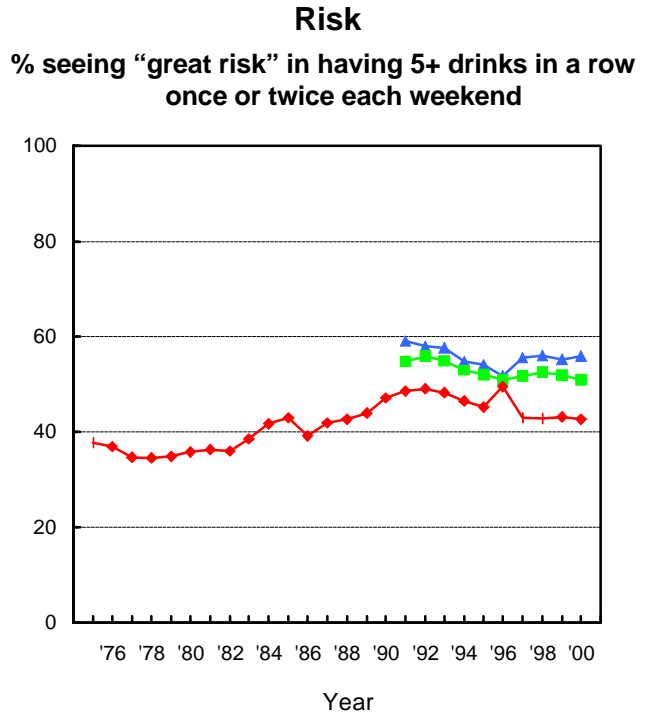
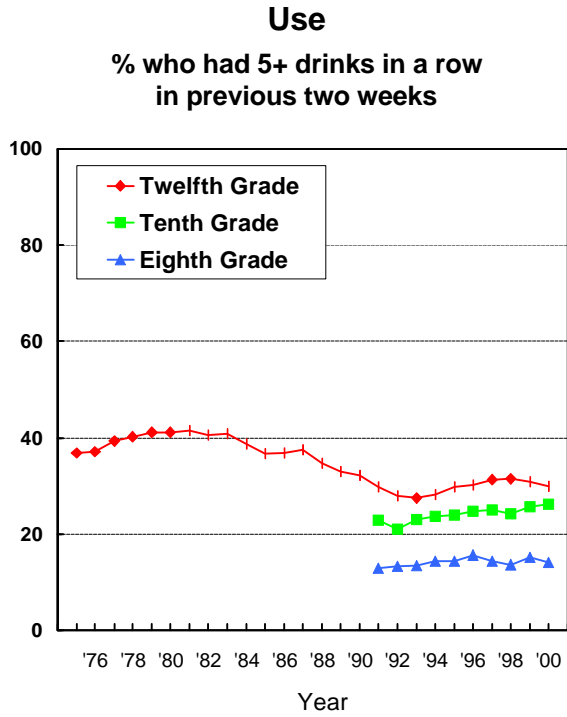


FIGURE 11
Steroids: Trends in Annual Use, Risk, Disapproval, and Availability
 Eighth, Tenth, and Twelfth Graders

