

December 13, 2002
Contact: Patti Meyer
Phone: (734) 647-1083
E-mail: pmeyer@umich.edu
Web site of study: www.monitoringthefuture.org

EMBARGOED FOR RELEASE AFTER 9:30 A.M. EST, MONDAY, DEC. 16, 2002

EDITORS: Results of this year's Monitoring the Future survey are released jointly by the National Institute on Drug Abuse, which sponsors the study, and by the University of Michigan, which designed and conducts the study, at a press conference to be held at the National Press Club in Washington, D.C. For further information on the study, contact the study's principal investigator, Lloyd D. Johnston, at (734) 763-5043.

Ecstasy use among American teens drops for the first time in recent years, and overall drug and alcohol use also decline in the year after 9/11.

ANN ARBOR, Mich.---This year's annual Monitoring the Future survey of American secondary school students provides much good news for the nation. Ecstasy use is finally beginning to decline among adolescents, the proportion using any illicit drug is also down, the proportion drinking alcohol has dropped, and the proportion reporting cigarette smoking continues to drop sharply. (The tobacco findings are discussed in a companion press release.)

Monitoring the Future, conducted at the University of Michigan Institute for Social Research and funded by the National Institute on Drug Abuse, has tracked substance use among American high school seniors for 28 years and among 8th-and 10th-graders for 12 years. In 2002, about 44,000 students in nearly 400 secondary schools across the country participated in the scientific survey, often described as the most reliable source of information on adolescent substance use.

Ecstasy use declines

According to social psychologist Lloyd Johnston, the study's principal investigator, and his colleagues and coauthors, Patrick O'Malley and Jerald Bachman, this year's downturn in ecstasy use was not entirely unexpected. "We have been saying for some time that the sharp rise in ecstasy use would not turn around until young people began to see this drug as more

(more)

dangerous,” Johnston said. “Last year, more young people did report ecstasy use as being dangerous, and the rise in use slowed.

“However, the drug was still diffusing out to new communities last year, so the total number of users still continued to rise. This year, however, there was another sharp rise in the proportion of young people saying that ecstasy use is dangerous, and we finally began to see a decline in use.” (See Figure 5.) Ecstasy use is down in all three prevalence periods measured (lifetime, annual, and 30-day) in all three grade levels. The one-year declines ranged from about one-tenth to nearly one-third. For example, among high school seniors annual use rates declined from 9.2 percent to 7.4 percent. For the three grades combined, the declines in both annual prevalence and 30-day prevalence were statistically significant, as were the annual and 30-day declines for 10th-graders, specifically.

“We have found increases in the perceived risk of using a drug to be an important leading indicator of downturns in its use, and this has now proven to apply to ecstasy, as well,” Johnston said. In 2000, only 38 percent of 12th-graders said there was a great risk of harm associated with trying ecstasy. That figure jumped to 46 percent in 2001 and again in 2002 to 52 percent. (See Tables 8-9 and Figure 5.) “These changes constitute unusually rapid changes in this belief and no doubt reflect the effects of media coverage of adverse events, as well as the efforts of the National Institute on Drug Abuse to document and disseminate information on the adverse consequences of using ecstasy,” Johnston said.

Disapproval of ecstasy use rose sharply in all three grades this year indicating that peer norms against the use of this drug are strengthening (see Figure 5). The availability of ecstasy, as reported by the students, leveled off this year following several years of very steep increases in availability. (See Figure 5.)

Overall illicit drug use declines

Over the past several years, the proportions of older students reporting use of any of the illicit drugs had been holding fairly steady, while 8th-graders had been showing a gradual

(more)

decline. This year, the proportion of students reporting the use of any illicit drug in the prior 12 months (annual prevalence) declined at all three grade levels, significantly so in grades 8 and 10. (Similar decreases were observed in all three prevalence periods—lifetime, annual, and 30-day.) (See Tables 1-2 and Figure 1.)

“This is the first time since 1998 that we have seen a significant decline in overall illicit drug use among 10th-graders,” Johnson said. At 12th-grade, none of this year’s declines in use of any illicit drug (i.e., lifetime, annual, or 30-day) reached statistical significance and annual prevalence is only 1.4 percentage points below the recent peak rate in 1997, so rather limited progress has been made to date in that grade. The proportions of 8th-, 10th-, and 12th-grade students reporting that they used an illicit drug in the prior twelve months (annual prevalence) now stand at 18 percent, 35 percent, and 41 percent, respectively. The proportions saying they have ever used an illicit drug in their lifetime (lifetime prevalence) stand at 25 percent, 45 percent, and 53 percent.

Specific drugs showing a decline

Marijuana: Marijuana use also showed some decline in all prevalence periods for all grades in 2002, although only the 10th-grade declines in annual and 30-day prevalence rates reached statistical significance. At 8th-grade there has been slow but quite steady progress. For 8th-graders the annual prevalence of marijuana use in 2002 of 14.6 percent is down from the recent peak of 18.3 percent in 1996. At 30.3 percent in 2002, annual prevalence for 10th-graders is now somewhat below the recent 1997 peak of 34.8 percent; but 12th-graders are down only modestly, from the recent 1997 peak of 38.5 percent to 36.2 percent in 2002. (See Table 2 and Figure 2.)

While in the past a decrease in marijuana use has generally been preceded by an increase in perceived risk for that drug, this time there was no such increase in this belief. Nor has the proportion of students personally disapproving of marijuana use changed much in the last few years, although it is higher now than it was in 1996 or 1997—the recent low points among 8th-

(more)

and 10th-graders, respectively. There was a slight decline in perceived availability of marijuana in 2002. (See Figure 2.) “The fact that marijuana use fell, without a change in these underlying attitudes and beliefs about marijuana, may reflect some decrease in young people’s motivation to use drugs generally,” commented Johnston. “This would be consistent with the notion that September 11 had some impact on young people in this regard.”

Illicit drugs other than marijuana: In all three grades the proportions of students using *any* illicit drug other than marijuana also fell in 2002 and did so for all three prevalence periods (lifetime, annual, and 30-day use), with one minor exception. (Twelfth-grade 30-day prevalence remained unchanged). The declines in annual prevalence were statistically significant in both 8th-and 10th-grades, with drops of 2.0 and 2.1 percentage points, respectively. The rate among 8th-graders is now one-third lower than it was in 1996, the recent peak year. Annual use is down about one-seventh, or 15 percent, from the same peak year among 10th-graders. In 2002 the proportion of students indicating that they had used any illicit drug other than marijuana during the past year stood at 9 percent, 16 percent, and 21 percent in grades 8, 10, and 12. At the peak more than two decades earlier (in 1981), some 34 percent of 12th-graders indicated such use. (See Tables 1-2.)

LSD: The use of LSD declined sharply and significantly at all three grades in 2002. This continues a drop that began in 1996. (See Table 2.) Perceived risk and disapproval generally have not been moving in ways that would help to explain this decline in use (although both did rise this year in 12th-grade only, for the first time), so the investigators believe part of the explanation may have been a shift to ecstasy use. (See Figure 4.) There has been some drop in the reported availability of LSD, including a significant drop in all grades this year, but whether this is a cause or a result of fewer students using the drug remains unclear.

Other hallucinogens: The use of hallucinogens other than LSD showed modest declines this year at all three grades in both lifetime and annual prevalence, although none of these changes reached statistical significance. This continued a gradual decline that began some years earlier in this general class of drugs. (See Tables 1-2.) Psilocybin from mushrooms (“shrooms”) is the dominant substance used in this class of drugs.

(more)

Inhalants: Volatile inhalants---including such substances as glue, aerosols, and butane---constitute another class of drugs with declining use this year, continuing a much longer-term decline. All three grades showed a drop in all prevalence periods, with one exception---there was no change in annual prevalence at 12th-grade. (The declines in lifetime prevalence for both 8th- and 10th-graders were significant, as was the decline in annual prevalence for 8th-graders.) The cumulative declines in inhalant use are substantial: for instance, 8th-grade annual use declined from 12.8 percent in 1995 to 7.7 percent in 2002---a drop of 40 percent. In general, perceived risk has risen during that period (though there was actually some decline in perceived risk in 2002, which could serve as a warning of increases in the future). Disapproval also rose and remains at very high levels. (See Figure 3.) (Availability is not asked because most of these substances are presumed to be universally available.) “The turnaround in inhalant use and beliefs about its harmfulness corresponds exactly with the start of the Partnership for a Drug-Free America’s anti-inhalant ad campaign, so we are inclined to credit much of the improvement in inhalant use to that intervention,” said Johnston.

Amphetamines: The use of amphetamines showed some decline in grades 8 and 10, but not in grade 12. Among 8th-graders this is the continuation of a longer-term decline going on since 1996. Among 10th-graders it is the first evidence of a decline in recent years, although not large enough to reach statistical significance. Among 12th-graders the rate of amphetamine use remains at the recent peak level. (See Tables 2 and 4-7.)

Methamphetamine: Use continued a longer-term decline among 8th-graders but remained relatively stable in 2002 among 10th- and 12th-graders (after some modest declines in use in those grades over the prior two years). “It does not appear that methamphetamine use is getting any worse among youth, as some may have feared. If anything, it is declining some,” concluded Johnston. (See Table 2.)

Drugs holding steady

The use of several drugs held fairly steady in 2002 among teens. These include heroin, narcotics other than heroin, cocaine and, for the most part, crack. Steroid use also held steady.

(more)

Heroin: By 2001 heroin use had finally dropped below recent peak levels in all grades. In 2002 overall use held steady, including use with and without a needle. Perceived risk for heroin, as well as disapproval, also held fairly steady this year. Over the past several years the perceived availability of heroin has declined some at all three grade levels. (See Table 2 and Figure 6.)

Other narcotics: The use of this class of drugs is reported only for 12th-graders. Their annual prevalence of use more than doubled between 1992 and 2000, rising from 3.3 percent to 7.0 percent. After 2000, use leveled and is still at 7.0 percent in 2002. (See Table 2.) Questions about two specific drugs in this category—Oxycontin and Vicodin—were included for the first time this year. Oxycontin has stirred considerable attention in the media in recent years as concern about its diversion through illegitimate channels has grown. Oxycontin—a prescription narcotic intended for the relief of pain—had annual prevalence rates in 2002 of 1 percent, 3 percent, and 4 percent in 8th-, 10th-, and 12th-grades, respectively. These numbers reflect only use outside of medical supervision. “While not as high as some may have feared, these are not insignificant rates of use for a powerful and addictive narcotic drug,” commented Johnston. Vicodin, another prescription narcotic, shows considerably higher annual prevalence rates: 3 percent, 7 percent, and 10 percent in 8th-, 10th-, and 12th-grades. (See Table 2.) No trend data are yet available for these two specific drugs.

Cocaine: The proportion of students in each of the three grades reporting any cocaine use has held quite steady over the past three years. These rates are much lower than they were during the height of the cocaine epidemic in the early to mid-1980s, and they are also down modestly from recent peaks reached in the mid-1990s. (See Tables 2 and 4-7.)

Steroids: The use of anabolic steroids, the majority of which occurs among males, remained flat in 2002 in all three grades, though at historically high levels. (Steroid use rose sharply in the prior several years.) Perceived risk and disapproval of the use of these drugs, which had fallen in recent years, remained fairly steady in 2002, as did perceived availability. (See Table 2 and Figure 8.)

(more)

Drugs increasing in use

With the turnaround in ecstasy use this year, there is rather little remaining evidence of increases in illicit drug use among American teens. The only two classes of drugs that show any sign of further, modest increase---at least among 12th-graders---are barbiturate sedatives and minor tranquilizers.

Alcohol use declines

Some important declines in adolescent alcohol use occurred in 2002. Some of them are continuations of a longer-term pattern, especially among 8th-grade students.

Any alcohol use: There were sizeable drops at all three grades in the proportion of students saying that they had any alcohol to drink in the past year and in the past 30 days. (These declines were statistically significant at grades 8 and 10.) The 30-day prevalence of alcohol use among 8th-graders has fallen from the recent 1996 high of 26 percent to 20 percent by 2002. Over just the one year from 2001 to 2002, 30-day prevalence among 10th-graders fell from 39 percent to 35 percent. (See Tables 1-2.)

“Among the younger students there was also a significant decline in the proportion who say they ever drank an alcoholic beverage at any time in their life,” Johnston said.

Declines in drunkenness: There were also declines in all three grades in the proportions of students saying that they got drunk in the previous year and in the previous 30 days. These declines continue a gradual trend that has occurred over the last several years. The proportions of students in grades 8, 10 and 12 who say they were drunk at least once in the 30 days prior to the survey were 7 percent, 18 percent, and 30 percent in 2002. While high, these rates are all down by between 1 and 4 percentage points from the previous year. (See Table 2 and Figure 7.)

Cohort effects

Johnston observed that a somewhat unusual pattern of change has been occurring in recent years for drug use. “It is noteworthy that the resurgence of the drug epidemic that occurred in the 1990s was specific to adolescents; and only as they grew older did drug use also

(more)

rise among young adults. The upturn in use occurred first among the youngest students we follow – the 8th-graders – and then spread up the age spectrum. Such a spread of a behavior through generational replacement is called a cohort effect, and we observed such a cohort effect for drug use in the 1990s.”

“In more recent years, we seem to be seeing another cohort effect---a reversal of the first one--- with the 8th-graders being the first to show declines in drug use, albeit very gradual ones. To some degree, at least, those declines seem to be working their way up the age spectrum, as the lower-using 8th-graders become the 10th-and eventually the 12th-graders.”

The role of 9/11?

While it could be coincidental that smoking, drinking, and drug use all showed downturns in the year after the tragic events of 9/11, it is also possible that these events had an impact, according to Johnston. “A decline in use already was underway for a number of substances, including cigarettes, inhalants, LSD, and others. On the other hand, the downturn in alcohol use this year was striking, and overall illicit drug use began to decline for the first time across the board,” he observed. “So, I think it quite possible that the tragedy of 9/11 had somewhat of a sobering effect on the country’s young people. Maybe it helped some, at least, to clarify what is and is not important to them.”

Johnston added one caution about the future relating to the looming possibility of another war. “In the Gulf War at the beginning of the 1990s, the nation’s institutions took their eyes off the problem of drug abuse, which fell off the national radar screen for several years. That set the stage for the resurgence of the drug epidemic among adolescents that we saw in the 1990s, as a new generation of naïve youngsters entered adolescence hearing little about the consequences of drug use. I think we can learn from that mistake and should make every effort to avoid repeating it. This constellation of problems needs continuous and focused attention. Drug and alcohol use by our youth are problems that are not going to go away, nor can we wish them away; but they can be contained if we attend to them continuously and wisely. In particular, we need to

(more)

remember that the job of educating and persuading our youngsters is never done, because there are always new ones entering adolescence.”

#

Monitoring the Future has been funded under a series of competing, investigator-initiated research grants from the National Institute on Drug Abuse. Surveys of nationally representative samples of American high school seniors were begun in 1975, making the class of 2002 the 28th such class surveyed. Surveys of 8th- and 10th-graders were added to the design in 1991, making the 2002 nationally representative samples the 12th such classes surveyed. The sample sizes in 2002 are 15,500 8th-graders, 14,700 10th-graders, and 13,500 12th-graders, for a total of 43,700 students. They are located in 394 private and public secondary schools across the coterminous United States, selected with probability proportionate to size to yield nationally representative samples of students in each of the three grade levels.

The findings summarized here will be published in the forthcoming volume: Johnston, L.D., O'Malley, P.M., & Bachman, J.G. (2003). *Monitoring the Future national results on adolescent drug use: Overview of key findings, 2002*. (NIH Publication No. [yet to be assigned].) Bethesda MD: National Institute on Drug Abuse.

TABLE 1

Trends in Lifetime Prevalence of Use of Various Drugs for Eighth, Tenth, and Twelfth Graders

(Entries are percentages)

	Lifetime											'01-'02 change	
	1991	1992	1993	1994	1995	1996	1997	1998	1999	2000	2001		2002
Any Illicit Drug ^a													
8th Grade	18.7	20.6	22.5	25.7	28.5	31.2	29.4	29.0	28.3	26.8	26.8	24.5	-2.3s
10th Grade	30.6	29.8	32.8	37.4	40.9	45.4	47.3	44.9	46.2	45.6	45.6	44.6	-1.1
12th Grade	44.1	40.7	42.9	45.6	48.4	50.8	54.3	54.1	54.7	54.0	53.9	53.0	-0.9
Any Illicit Drug Other Than Marijuana ^{a,b}													
8th Grade	14.3	15.6	16.8	17.5	18.8	19.2	17.7	16.9	16.3	15.8	17.0	13.7	-3.3sss
10th Grade	19.1	19.2	20.9	21.7	24.3	25.5	25.0	23.6	24.0	23.1	23.6	22.1	-1.5
12th Grade	26.9	25.1	26.7	27.6	28.1	28.5	30.0	29.4	29.4	29.0	30.7	29.5	-1.2
Any Illicit Drug Including Inhalants ^{a,c}													
8th Grade	28.5	29.6	32.3	35.1	38.1	39.4	38.1	37.8	37.2	35.1	34.5	31.6	-2.9ss
10th Grade	36.1	36.2	38.7	42.7	45.9	49.8	50.9	49.3	49.9	49.3	48.8	47.7	-1.1
12th Grade	47.6	44.4	46.6	49.1	51.5	53.5	56.3	56.1	56.3	57.0	56.0	54.6	-1.4
Marijuana/Hashish													
8th Grade	10.2	11.2	12.6	16.7	19.9	23.1	22.6	22.2	22.0	20.3	20.4	19.2	-1.2
10th Grade	23.4	21.4	24.4	30.4	34.1	39.8	42.3	39.6	40.9	40.3	40.1	38.7	-1.4
12th Grade	36.7	32.6	35.3	38.2	41.7	44.9	49.6	49.1	49.7	48.8	49.0	47.8	-1.1
Inhalants ^{c,d}													
8th Grade	17.6	17.4	19.4	19.9	21.6	21.2	21.0	20.5	19.7	17.9	17.1	15.2	-1.9s
10th Grade	15.7	16.6	17.5	18.0	19.0	19.3	18.3	18.3	17.0	16.6	15.2	13.5	-1.6s
12th Grade	17.6	16.6	17.4	17.7	17.4	16.6	16.1	15.2	15.4	14.2	13.0	11.7	-1.4
Nitrites ^e													
8th Grade	—	—	—	—	—	—	—	—	—	—	—	—	—
10th Grade	—	—	—	—	—	—	—	—	—	—	—	—	—
12th Grade	1.6	1.5	1.4	1.7	1.5	1.8	2.0	2.7	1.7	0.8	1.9	1.5	-0.4
Hallucinogens ^{b,d}													
8th Grade	3.2	3.8	3.9	4.3	5.2	5.9	5.4	4.9	4.8	4.6	5.2	4.1	-1.0
10th Grade	6.1	6.4	6.8	8.1	9.3	10.5	10.5	9.8	9.7	8.9	8.9	7.8	-1.0
12th Grade	9.6	9.2	10.9	11.4	12.7	14.0	15.1	14.1	13.7	13.0	14.7	12.0	-2.7s
LSD													
8th Grade	2.7	3.2	3.5	3.7	4.4	5.1	4.7	4.1	4.1	3.9	3.4	2.5	-1.0s
10th Grade	5.6	5.8	6.2	7.2	8.4	9.4	9.5	8.5	8.5	7.6	6.3	5.0	-1.4s
12th Grade	8.8	8.6	10.3	10.5	11.7	12.6	13.6	12.6	12.2	11.1	10.9	8.4	-2.5ss
Hallucinogens Other Than LSD ^b													
8th Grade	1.4	1.7	1.7	2.2	2.5	3.0	2.6	2.5	2.4	2.3	3.9	3.3	-0.6
10th Grade	2.2	2.5	2.8	3.8	3.9	4.7	4.8	5.0	4.7	4.8	6.6	6.3	-0.3
12th Grade	3.7	3.3	3.9	4.9	5.4	6.8	7.5	7.1	6.7	6.9	10.4	9.2	-1.2
PCP ^e													
8th Grade	—	—	—	—	—	—	—	—	—	—	—	—	—
10th Grade	—	—	—	—	—	—	—	—	—	—	—	—	—
12th Grade	2.9	2.4	2.9	2.8	2.7	4.0	3.9	3.9	3.4	3.4	3.5	3.1	-0.5

(Table continued on next page)

TABLE 1 (cont.)

Trends in Lifetime Prevalence of Use of Various Drugs for Eighth, Tenth, and Twelfth Graders

	<u>Lifetime</u>												<u>'01-'02 change</u>
	<u>1991</u>	<u>1992</u>	<u>1993</u>	<u>1994</u>	<u>1995</u>	<u>1996</u>	<u>1997</u>	<u>1998</u>	<u>1999</u>	<u>2000</u>	<u>2001</u>	<u>2002</u>	
MDMA (Ecstasy) ^{e,f}													
8th Grade	—	—	—	—	—	3.4	3.2	2.7	2.7	4.3	5.2	4.3	-0.9
10th Grade	—	—	—	—	—	5.6	5.7	5.1	6.0	7.3	8.0	6.6	-1.4
12th Grade	—	—	—	—	—	6.1	6.9	5.8	8.0	11.0	11.7	10.5	-1.2
Cocaine													
8th Grade	2.3	2.9	2.9	3.6	4.2	4.5	4.4	4.6	4.7	4.5	4.3	3.6	-0.7
10th Grade	4.1	3.3	3.6	4.3	5.0	6.5	7.1	7.2	7.7	6.9	5.7	6.1	+0.5
12th Grade	7.8	6.1	6.1	5.9	6.0	7.1	8.7	9.3	9.8	8.6	8.2	7.8	-0.4
Crack													
8th Grade	1.3	1.6	1.7	2.4	2.7	2.9	2.7	3.2	3.1	3.1	3.0	2.5	-0.4
10th Grade	1.7	1.5	1.8	2.1	2.8	3.3	3.6	3.9	4.0	3.7	3.1	3.6	+0.5
12th Grade	3.1	2.6	2.6	3.0	3.0	3.3	3.9	4.4	4.6	3.9	3.7	3.8	+0.1
Other Cocaine ^g													
8th Grade	2.0	2.4	2.4	3.0	3.4	3.8	3.5	3.7	3.8	3.5	3.3	2.8	-0.5
10th Grade	3.8	3.0	3.3	3.8	4.4	5.5	6.1	6.4	6.8	6.0	5.0	5.2	+0.2
12th Grade	7.0	5.3	5.4	5.2	5.1	6.4	8.2	8.4	8.8	7.7	7.4	7.0	-0.4
Heroin ^h													
8th Grade	1.2	1.4	1.4	2.0	2.3	2.4	2.1	2.3	2.3	1.9	1.7	1.6	-0.1
10th Grade	1.2	1.2	1.3	1.5	1.7	2.1	2.1	2.3	2.3	2.2	1.7	1.8	+0.2
12th Grade	0.9	1.2	1.1	1.2	1.6	1.8	2.1	2.0	2.0	2.4	1.8	1.7	-0.1
With a needle ⁱ													
8th Grade	—	—	—	—	1.5	1.6	1.3	1.4	1.6	1.1	1.2	1.0	-0.1
10th Grade	—	—	—	—	1.0	1.1	1.1	1.2	1.3	1.0	0.8	1.0	+0.2
12th Grade	—	—	—	—	0.7	0.8	0.9	0.8	0.9	0.8	0.7	0.8	+0.1
Without a needle ⁱ													
8th Grade	—	—	—	—	1.5	1.6	1.4	1.5	1.4	1.3	1.1	1.0	-0.1
10th Grade	—	—	—	—	1.1	1.7	1.7	1.7	1.6	1.7	1.3	1.3	+0.1
12th Grade	—	—	—	—	1.4	1.7	2.1	1.6	1.8	2.4	1.5	1.6	+0.1
Other Narcotics ^j													
8th Grade	—	—	—	—	—	—	—	—	—	—	—	—	—
10th Grade	—	—	—	—	—	—	—	—	—	—	—	—	—
12th Grade	6.6	6.1	6.4	6.6	7.2	8.2	9.7	9.8	10.2	10.6	9.9	10.1	+0.2 ^k
Amphetamines ^l													
8th Grade	10.5	10.8	11.8	12.3	13.1	13.5	12.3	11.3	10.7	9.9	10.2	8.7	-1.5s
10th Grade	13.2	13.1	14.9	15.1	17.4	17.7	17.0	16.0	15.7	15.7	16.0	14.9	-1.1
12th Grade	15.4	13.9	15.1	15.7	15.3	15.3	16.5	16.4	16.3	15.6	16.2	16.8	+0.5
Methamphetamine ^{l,m}													
8th Grade	—	—	—	—	—	—	—	—	4.5	4.2	4.4	3.5	-0.9
10th Grade	—	—	—	—	—	—	—	—	7.3	6.9	6.4	6.1	-0.3
12th Grade	—	—	—	—	—	—	—	—	8.2	7.9	6.9	6.7	-0.2

(Table continued on next page)

TABLE 1 (cont.)

Trends in Lifetime Prevalence of Use of Various Drugs for Eighth, Tenth, and Twelfth Graders

	<u>Lifetime</u>												<u>'01-'02</u> <u>change</u>
	<u>1991</u>	<u>1992</u>	<u>1993</u>	<u>1994</u>	<u>1995</u>	<u>1996</u>	<u>1997</u>	<u>1998</u>	<u>1999</u>	<u>2000</u>	<u>2001</u>	<u>2002</u>	
Ice ^m													
8th Grade	—	—	—	—	—	—	—	—	—	—	—	—	—
10th Grade	—	—	—	—	—	—	—	—	—	—	—	—	—
12th Grade	3.3	2.9	3.1	3.4	3.9	4.4	4.4	5.3	4.8	4.0	4.1	4.7	+0.6
Barbiturates ^j													
8th Grade	—	—	—	—	—	—	—	—	—	—	—	—	—
10th Grade	—	—	—	—	—	—	—	—	—	—	—	—	—
12th Grade	6.2	5.5	6.3	7.0	7.4	7.6	8.1	8.7	8.9	9.2	8.7	9.5	+0.9
Tranquilizers ^{b,j}													
8th Grade	3.8	4.1	4.4	4.6	4.5	5.3	4.8	4.6	4.4	4.4	‡ 5.0	4.3	-0.7
10th Grade	5.8	5.9	5.7	5.4	6.0	7.1	7.3	7.8	7.9	8.0	‡ 9.2	8.8	-0.3
12th Grade	7.2	6.0	6.4	6.6	7.1	7.2	7.8	8.5	9.3	8.9	‡ 10.3	11.4	+1.2
Rohypnol ^{e,n}													
8th Grade	—	—	—	—	—	1.5	1.1	1.4	1.3	1.0	1.1	0.8	-0.3
10th Grade	—	—	—	—	—	1.5	1.7	2.0	1.8	1.3	1.5	1.3	-0.2
12th Grade	—	—	—	—	—	1.2	1.8	3.0	2.0	1.5	1.7	—	—
Alcohol ^o													
Any use													
8th Grade	70.1	69.3	‡ 55.7	55.8	54.5	55.3	53.8	52.5	52.1	51.7	50.5	47.0	-3.5ss
10th Grade	83.8	82.3	‡ 71.6	71.1	70.5	71.8	72.0	69.8	70.6	71.4	70.1	66.9	-3.2ss
12th Grade	88.0	87.5	‡ 80.0	80.4	80.7	79.2	81.7	81.4	80.0	80.3	79.7	78.4	-1.3
Been Drunk ^m													
8th Grade	26.7	26.8	26.4	25.9	25.3	26.8	25.2	24.8	24.8	25.1	23.4	21.3	-2.1s
10th Grade	50.0	47.7	47.9	47.2	46.9	48.5	49.4	46.7	48.9	49.3	48.2	44.0	-4.2sss
12th Grade	65.4	63.4	62.5	62.9	63.2	61.8	64.2	62.4	62.3	62.3	63.9	61.6	-2.3
Cigarettes													
Any use													
8th Grade	44.0	45.2	45.3	46.1	46.4	49.2	47.3	45.7	44.1	40.5	36.6	31.4	-5.1sss
10th Grade	55.1	53.5	56.3	56.9	57.6	61.2	60.2	57.7	57.6	55.1	52.8	47.4	-5.4sss
12th Grade	63.1	61.8	61.9	62.0	64.2	63.5	65.4	65.3	64.6	62.5	61.0	57.2	-3.9ss
Smokeless Tobacco ^{a,p}													
8th Grade	22.2	20.7	18.7	19.9	20.0	20.4	16.8	15.0	14.4	12.8	11.7	11.2	-0.5
10th Grade	28.2	26.6	28.1	29.2	27.6	27.4	26.3	22.7	20.4	19.1	19.5	16.9	-2.6s
12th Grade	—	32.4	31.0	30.7	30.9	29.8	25.3	26.2	23.4	23.1	19.7	18.3	-1.4
Steroids ^m													
8th Grade	1.9	1.7	1.6	2.0	2.0	1.8	1.8	2.3	2.7	3.0	2.8	2.5	-0.3
10th Grade	1.8	1.7	1.7	1.8	2.0	1.8	2.0	2.0	2.7	3.5	3.5	3.5	0.0
12th Grade	2.1	2.1	2.0	2.4	2.3	1.9	2.4	2.7	2.9	2.5	3.7	4.0	+0.3

NOTES: Level of significance of difference between the two most recent classes: s = .05, ss = .01, sss = .001. '—' indicates data not available. '‡' indicates some change in the question. See relevant footnote for that drug. See relevant figure to assess the impact of the wording changes. Any apparent inconsistency between the change estimate and the prevalence of use estimates for the two most recent classes is due to rounding error.

SOURCE: The Monitoring the Future Study, the University of Michigan.

Footnotes for Table 1 to Table 3

Approximate Weighted Ns	1991	1992	1993	1994	1995	1996	1997	1998	1999	2000	2001	2002
8th Grade	17,500	18,600	18,300	17,300	17,500	17,800	18,600	18,100	16,700	16,700	16,200	15,100
10th Grade	14,800	14,800	15,300	15,800	17,000	15,600	15,500	15,000	13,600	14,300	14,000	14,300
12th Grade	15,000	15,800	16,300	15,400	15,400	14,300	15,400	15,200	13,600	12,800	12,800	12,900

[†] indicates some change in the question. See relevant footnote for that drug. See relevant figure to assess the impact of the wording changes.

^aFor 12th graders only: Use of “any illicit drug” includes any use of marijuana, LSD, other hallucinogens, crack, other cocaine, or heroin, or any use of other narcotics, amphetamines, barbiturates, or tranquilizers not under a doctor’s orders. For 8th and 10th graders: The use of other narcotics and barbiturates has been excluded, because these younger respondents appear to overreport use (perhaps because they include the use of nonprescription drugs in their answers).

^bIn 2001 the question text was changed on half of the questionnaire forms for each grade. “Other psychedelics” was changed to “other hallucinogens” and “shrooms” was added to the list of examples. For the tranquilizer list of examples, Miltown was replaced with Xanax. The 2001 data presented here are based on the changed forms only; N is one-half of N indicated. In 2002 the remaining forms were changed to the new wording. The 2002 data are based on all forms. Data for “any illicit drug other than marijuana” and “hallucinogens” are also affected by these changes and have been handled in a parallel manner.

^cFor 12th graders only: Data based on five of six forms in 1991-98; N is five-sixths of N indicated. Beginning in 1999, data based on three of six forms; N is three-sixths of N indicated.

^dInhalants are unadjusted for underreporting of amyl and butyl nitrites; hallucinogens are unadjusted for underreporting of PCP.

^eFor 12th graders only: Data based on one form; N is one-sixth of N indicated. Data for MDMA based on two forms in 2002; N is two-sixths of N indicated. Data for Rohypnol for 2001 and 2002 are not comparable due to changes in the questionnaire forms.

^fFor 8th and 10th graders only: Data based on one form in 1996; N is one-half of N indicated. Beginning in 1997, data based on one-third of N indicated due to changes on the questionnaire forms. Data for MDMA based on two forms in 2002; N is one-half of N indicated.

^gFor 12th graders only: Data based on four of six forms; N is four-sixths of N indicated.

^hIn 1995, the heroin question was changed in three of six forms for 12th graders and in one of two forms for 8th and 10th graders. Separate questions were asked for use with injection and without injection. Data presented here represent the combined data from all forms. In 1996, the heroin question was changed in all remaining 8th and 10th grade forms.

ⁱFor 8th and 10th graders only: Data based on one of two forms in 1995; N is one-half of N indicated. Data based on all forms beginning in 1996. For 12th graders only: Data based on three of six forms; N is three-sixths of N indicated.

^jOnly drug use not under a doctor’s orders is included here.

^kIn 2002 the question text was changed in half of the questionnaire forms. The list of examples of narcotics other than heroin was updated: Talwin, laudanum, and paregoric—all of which had negligible rates of use by 2001—were replaced with Vicodin, Oxycontin, Percocet, and Dilaudid. The 2001 data presented here are based on all forms. The 2002 estimates are based on the difference between the data from the 2001 and 2002 unchanged forms added to the 2001 prevalence of use rate. The change score given in the right-hand column is the difference between the data from the unchanged forms only in both 2001 and 2002.

^lFor 8th and 10th graders only: Data based on one of four forms; N is one-third of N indicated.

^mFor 12th graders only: Data based on two of six forms; N is two-sixths of N indicated.

ⁿFor 8th and 10th graders only: Data based on one of two forms in 1996; N is one-half of N indicated. Data based on three of four forms in 1997-98; N is two-thirds of N indicated. In 1999-2001, data based on two of four forms; N is one-third of N indicated. In 2002, data based on one form; N is one-sixth of N indicated.

^oIn 1993, the question text was changed slightly in half of the forms to indicate that a “drink” meant “more than a few sips.” The 1993 data are based on the changed forms only; N is one-half of N indicated. In 1994 the remaining forms were changed to the new wording. Beginning in 1994, the data are based on all forms.

^pFor 8th and 10th graders only: Data based on one of two forms for 1991-96 and on two of four forms beginning in 1997; N is one-half of N indicated.

^qFor 12th graders only: Data based on two of six forms in 2000; N is two-sixths of N indicated. Data based on three of six forms beginning in 2001; N is three-

sixths of N indicated. Data for GHB based on one form in 2002; N is one-sixth of N indicated.

¹Daily use is defined as use on twenty or more occasions in the past thirty days except for cigarettes and smokeless tobacco, for which actual daily use is measured, and for 5+ drinks, for which the prevalence of having five or more drinks in a row in the last two weeks is measured.

TABLE 2
Trends in Annual and 30-Day Prevalence of Use of Various Drugs
for Eighth, Tenth, and Twelfth Graders

	Annual												'01-'02 change	30-Day												'01-'02 change
	1991	1992	1993	1994	1995	1996	1997	1998	1999	2000	2001	2002		1991	1992	1993	1994	1995	1996	1997	1998	1999	2000	2001	2002	
Any Illicit Drug ^a	11.3	12.9	15.1	18.5	21.4	23.6	22.1	21.0	20.5	19.5	19.5	17.7	-1.7s	5.7	6.8	8.4	10.9	12.4	14.6	12.9	12.1	12.2	11.9	11.7	10.4	-1.2
8th Grade	21.4	20.4	24.7	30.0	33.3	37.5	38.5	35.0	35.9	36.4	37.2	34.8	-2.4s	11.6	11.0	14.0	18.5	20.2	23.2	23.0	21.5	22.1	22.5	22.7	20.8	-1.9s
10th Grade	29.4	27.1	31.0	35.8	39.0	40.2	42.4	41.4	42.1	40.9	41.4	41.0	-0.5	16.4	14.4	18.3	21.9	23.8	24.6	26.2	25.6	25.9	24.9	25.7	25.4	-0.4
12th Grade																										
Any Illicit Drug Other Than Marijuana ^{a,b}	8.4	9.3	10.4	11.3	12.6	13.1	11.8	11.0	10.5	10.2	10.8	8.8	-2.0ss	3.8	4.7	5.3	5.6	6.5	6.9	6.0	5.5	5.5	5.6	5.5	4.7	-0.8
8th Grade	12.2	12.3	13.9	15.2	17.5	18.4	18.2	16.6	16.7	16.7	17.9	15.7	-2.1s	5.5	5.7	6.5	7.1	8.9	8.9	8.8	8.6	8.6	8.5	8.7	8.1	-0.6
10th Grade	16.2	14.9	17.1	18.0	19.4	19.8	20.7	20.2	20.7	20.4	21.6	20.9	-0.7	7.1	6.3	7.9	8.8	10.0	9.5	10.7	10.7	10.4	10.4	11.0	11.3	+0.3
12th Grade																										
Any Illicit Drug Including Inhalants ^{a,c}	16.7	18.2	21.1	24.2	27.1	28.7	27.2	26.2	25.3	24.0	23.9	21.4	-2.5ss	8.8	10.0	12.0	14.3	16.1	17.5	16.0	14.9	15.1	14.4	14.0	12.6	-1.4s
8th Grade	23.9	23.5	27.4	32.5	35.6	39.6	40.3	37.1	37.7	38.0	38.7	36.1	-2.6s	13.1	12.6	15.5	20.0	21.6	24.5	24.1	22.5	23.1	23.6	23.6	21.7	-1.9s
10th Grade	31.2	28.8	32.5	37.6	40.2	41.9	43.3	42.4	42.8	42.5	42.6	42.1	-0.5	17.8	15.5	19.3	23.0	24.8	25.5	26.9	26.6	26.4	26.4	26.5	25.9	-0.5
12th Grade																										
Marijuana/Hashish	6.2	7.2	9.2	13.0	15.8	18.3	17.7	16.9	16.5	15.6	15.4	14.6	-0.8	3.2	3.7	5.1	7.8	9.1	11.3	10.2	9.7	9.7	9.1	9.2	8.3	-0.9
8th Grade	16.5	15.2	19.2	25.2	28.7	33.6	34.8	31.1	32.1	32.2	32.7	30.3	-2.4s	8.7	8.1	10.9	15.8	17.2	20.4	20.5	18.7	19.4	19.7	19.8	17.8	-1.9s
10th Grade	23.9	21.9	26.0	30.7	34.7	35.8	38.5	37.5	37.8	36.5	37.0	36.2	-0.8	13.8	11.9	15.5	19.0	21.2	21.9	23.7	22.8	23.1	21.6	22.4	21.5	-0.9
12th Grade																										
Inhalants ^{c,d}	9.0	9.5	11.0	11.7	12.8	12.2	11.8	11.1	10.3	9.4	9.1	7.7	-1.4ss	4.4	4.7	5.4	5.6	6.1	5.8	5.6	4.8	5.0	4.5	4.0	3.8	-0.2
8th Grade	7.1	7.5	8.4	9.1	9.6	9.5	8.7	8.0	7.2	7.3	6.6	5.8	-0.9	2.7	2.7	3.3	3.6	3.5	3.3	3.0	2.9	2.6	2.6	2.4	2.4	-0.1
10th Grade	6.6	6.2	7.0	7.7	8.0	7.6	6.7	6.2	5.6	5.9	4.5	4.5	0.0	2.4	2.3	2.5	2.7	3.2	2.5	2.5	2.3	2.0	2.2	1.7	1.5	-0.2
12th Grade																										
Nitrites ^e	—	—	—	—	—	—	—	—	—	—	—	—	—	—	—	—	—	—	—	—	—	—	—	—	—	—
8th Grade	—	—	—	—	—	—	—	—	—	—	—	—	—	—	—	—	—	—	—	—	—	—	—	—	—	—
10th Grade	0.9	0.5	0.9	1.1	1.1	1.6	1.2	1.4	0.9	0.6	0.6	1.1	+0.5	0.4	0.3	0.6	0.4	0.4	0.7	0.7	1.0	0.4	0.3	0.5	0.6	+0.1
12th Grade																										
Hallucinogens ^{b,d}	1.9	2.5	2.6	2.7	3.6	4.1	3.7	3.4	2.9	2.8	3.4	2.6	-0.8	0.8	1.1	1.2	1.3	1.7	1.9	1.8	1.4	1.3	1.2	1.6	1.2	-0.4
8th Grade	4.0	4.3	4.7	5.8	7.2	7.8	7.6	6.9	6.9	6.1	6.2	4.7	-1.5s	1.6	1.8	1.9	2.4	3.3	2.8	3.3	3.2	2.9	2.3	2.1	1.6	-0.4
10th Grade	5.8	5.9	7.4	7.6	9.3	10.1	9.8	9.0	9.4	8.1	9.1	6.6	-2.5sss	2.2	2.1	2.7	3.1	4.4	3.5	3.9	3.8	3.5	2.6	3.3	2.3	-1.0ss
12th Grade																										
LSD	1.7	2.1	2.3	2.4	3.2	3.5	3.2	2.8	2.4	2.4	2.2	1.5	-0.7s	0.6	0.9	1.0	1.1	1.4	1.5	1.5	1.1	1.1	1.0	1.0	0.7	-0.3
8th Grade	3.7	4.0	4.2	5.2	6.5	6.9	6.7	5.9	6.0	5.1	4.1	2.6	-1.6sss	1.5	1.6	1.6	2.0	3.0	2.4	2.8	2.7	2.3	1.6	1.5	0.7	-0.8sss
10th Grade	5.2	5.6	6.8	6.9	8.4	8.8	8.4	7.6	8.1	6.6	6.6	3.5	-3.1sss	1.9	2.0	2.4	2.6	4.0	2.5	3.1	3.2	2.7	1.6	2.3	0.7	-1.6sss
12th Grade																										
Hallucinogens Other Than LSD ^b	0.7	1.1	1.0	1.3	1.7	2.0	1.8	1.6	1.5	1.4	2.4	2.1	-0.3	0.3	0.4	0.5	0.7	0.8	0.9	0.7	0.7	0.6	0.6	1.1	1.0	-0.2
8th Grade	1.3	1.4	1.9	2.4	2.8	3.3	3.3	3.4	3.2	3.1	4.3	4.0	-0.4	0.4	0.5	0.7	1.0	1.0	1.0	1.2	1.4	1.2	1.2	1.4	1.4	0.0
10th Grade	2.0	1.7	2.2	3.1	3.8	4.4	4.6	4.6	4.3	4.4	5.9	5.4	-0.4	0.7	0.5	0.8	1.2	1.3	1.6	1.7	1.6	1.6	1.7	1.9	2.0	+0.1
12th Grade																										

(Table continued on next page)

TABLE 2 (cont.)
Trends in Annual and 30-Day Prevalence of Use of Various Drugs
for Eighth, Tenth, and Twelfth Graders

	Annual													30-Day												
	1991	1992	1993	1994	1995	1996	1997	1998	1999	2000	2001	2002	'01-'02 change	1991	1992	1993	1994	1995	1996	1997	1998	1999	2000	2001	2002	'01-'02 change
PCP ^e																										
8th Grade	—	—	—	—	—	—	—	—	—	—	—	—	—	—	—	—	—	—	—	—	—	—	—	—	—	—
10th Grade	—	—	—	—	—	—	—	—	—	—	—	—	—	—	—	—	—	—	—	—	—	—	—	—	—	—
12th Grade	1.4	1.4	1.4	1.6	1.8	2.6	2.3	2.1	1.8	2.3	1.8	1.1	-0.7	0.5	0.6	1.0	0.7	0.6	1.3	0.7	1.0	0.8	0.9	0.5	0.4	-0.1
MDMA (Ecstasy) ^{e,f}																										
8th Grade	—	—	—	—	—	2.3	2.3	1.8	1.7	3.1	3.5	2.9	-0.6	—	—	—	—	—	1.0	1.0	0.9	0.8	1.4	1.8	1.4	-0.5
10th Grade	—	—	—	—	—	4.6	3.9	3.3	4.4	5.4	6.2	4.9	-1.3s	—	—	—	—	—	1.8	1.3	1.3	1.8	2.6	2.6	1.8	-0.8s
12th Grade	—	—	—	—	—	4.6	4.0	3.6	5.6	8.2	9.2	7.4	-1.8	—	—	—	—	—	2.0	1.6	1.5	2.5	3.6	2.8	2.4	-0.4
Cocaine																										
8th Grade	1.1	1.5	1.7	2.1	2.6	3.0	2.8	3.1	2.7	2.6	2.5	2.3	-0.3	0.5	0.7	0.7	1.0	1.2	1.3	1.1	1.4	1.3	1.2	1.2	1.1	-0.1
10th Grade	2.2	1.9	2.1	2.8	3.5	4.2	4.7	4.7	4.9	4.4	3.6	4.0	+0.5	0.7	0.7	0.9	1.2	1.7	1.7	2.0	2.1	1.8	1.8	1.3	1.6	+0.3
12th Grade	3.5	3.1	3.3	3.6	4.0	4.9	5.5	5.7	6.2	5.0	4.8	5.0	+0.2	1.4	1.3	1.3	1.5	1.8	2.0	2.3	2.4	2.6	2.1	2.1	2.3	+0.2
Crack																										
8th Grade	0.7	0.9	1.0	1.3	1.6	1.8	1.7	2.1	1.8	1.8	1.7	1.6	-0.1	0.3	0.5	0.4	0.7	0.7	0.8	0.7	0.9	0.8	0.8	0.8	0.8	0.0
10th Grade	0.9	0.9	1.1	1.4	1.8	2.1	2.2	2.5	2.4	2.2	1.8	2.3	+0.5s	0.3	0.4	0.5	0.6	0.9	0.8	0.9	1.1	0.8	0.9	0.7	1.0	+0.2
12th Grade	1.5	1.5	1.5	1.9	2.1	2.1	2.4	2.5	2.7	2.2	2.1	2.3	+0.2	0.7	0.6	0.7	0.8	1.0	1.0	0.9	1.0	1.1	1.0	1.1	1.2	+0.1
Other Cocaine ^g																										
8th Grade	1.0	1.2	1.3	1.7	2.1	2.5	2.2	2.4	2.3	1.9	1.9	1.8	-0.1	0.5	0.5	0.6	0.9	1.0	1.0	0.8	1.0	1.1	0.9	0.9	0.8	-0.2
10th Grade	2.1	1.7	1.8	2.4	3.0	3.5	4.1	4.0	4.4	3.8	3.0	3.4	+0.4	0.6	0.6	0.7	1.0	1.4	1.3	1.6	1.8	1.6	1.6	1.2	1.3	+0.2
12th Grade	3.2	2.6	2.9	3.0	3.4	4.2	5.0	4.9	5.8	4.5	4.4	4.4	0.0	1.2	1.0	1.2	1.3	1.3	1.6	2.0	2.0	2.5	1.7	1.8	1.9	+0.1
Heroin ^h																										
8th Grade	0.7	0.7	0.7	1.2	1.4	1.6	1.3	1.3	1.4	1.1	1.0	0.9	-0.1	0.3	0.4	0.4	0.6	0.6	0.7	0.6	0.6	0.6	0.5	0.6	0.5	-0.1
10th Grade	0.5	0.6	0.7	0.9	1.1	1.2	1.4	1.4	1.4	1.4	0.9	1.1	+0.1	0.2	0.2	0.3	0.4	0.6	0.5	0.6	0.7	0.7	0.5	0.3	0.5	+0.2
12th Grade	0.4	0.6	0.5	0.6	1.1	1.0	1.2	1.0	1.1	1.5	0.9	1.0	+0.1	0.2	0.3	0.2	0.3	0.6	0.5	0.5	0.5	0.5	0.7	0.4	0.5	+0.1
With a needle ⁱ																										
8th Grade	—	—	—	—	0.9	1.0	0.8	0.8	0.9	0.6	0.7	0.6	-0.1	—	—	—	—	0.4	0.5	0.4	0.5	0.4	0.3	0.4	0.3	-0.1
10th Grade	—	—	—	—	0.6	0.7	0.7	0.8	0.6	0.5	0.4	0.6	+0.1	—	—	—	—	0.3	0.3	0.3	0.4	0.3	0.3	0.2	0.3	+0.1
12th Grade	—	—	—	—	0.5	0.5	0.5	0.4	0.4	0.4	0.3	0.4	+0.1	—	—	—	—	0.3	0.4	0.3	0.2	0.2	0.2	0.2	0.3	+0.1
Without a needle ⁱ																										
8th Grade	—	—	—	—	0.8	1.0	0.8	0.8	0.9	0.7	0.6	0.6	0.0	—	—	—	—	0.3	0.4	0.4	0.3	0.4	0.3	0.4	0.3	-0.1
10th Grade	—	—	—	—	0.8	0.9	1.1	1.0	1.1	1.1	0.7	0.8	+0.1	—	—	—	—	0.3	0.3	0.4	0.5	0.5	0.4	0.2	0.4	+0.1
12th Grade	—	—	—	—	1.0	1.0	1.2	0.8	1.0	1.6	0.8	0.8	0.0	—	—	—	—	0.6	0.4	0.6	0.4	0.4	0.7	0.3	0.5	+0.1
Other Narcotics ^j																										
8th Grade	—	—	—	—	—	—	—	—	—	—	—	—	—	—	—	—	—	—	—	—	—	—	—	—	—	—
10th Grade	—	—	—	—	—	—	—	—	—	—	—	—	—	—	—	—	—	—	—	—	—	—	—	—	—	—
12th Grade	3.5	3.3	3.6	3.8	4.7	5.4	6.2	6.3	6.7	7.0	6.7	7.0	+0.2 ^k	1.1	1.2	1.3	1.5	1.8	2.0	2.3	2.4	2.6	2.9	3.0	3.1	+0.2 ^k
Oxycontin ^{lm}																										
8th Grade	—	—	—	—	—	—	—	—	—	—	—	1.3	—	—	—	—	—	—	—	—	—	—	—	—	—	—
10th Grade	—	—	—	—	—	—	—	—	—	—	—	3.0	—	—	—	—	—	—	—	—	—	—	—	—	—	—
12th Grade	—	—	—	—	—	—	—	—	—	—	—	4.0	—	—	—	—	—	—	—	—	—	—	—	—	—	—

(Table continued on next page)

TABLE 2 (cont.)
Trends in Annual and 30-Day Prevalence of Use of Various Drugs
for Eighth, Tenth, and Twelfth Graders

	Annual													30-Day													
	1991	1992	1993	1994	1995	1996	1997	1998	1999	2000	2001	2002	'01-'02 change	1991	1992	1993	1994	1995	1996	1997	1998	1999	2000	2001	2002	'01-'02 change	
Vicodin ^{lm}																											
8th Grade	—	—	—	—	—	—	—	—	—	—	—	2.5	—	—	—	—	—	—	—	—	—	—	—	—	—	—	
10th Grade	—	—	—	—	—	—	—	—	—	—	—	6.9	—	—	—	—	—	—	—	—	—	—	—	—	—	—	
12th Grade	—	—	—	—	—	—	—	—	—	—	—	9.6	—	—	—	—	—	—	—	—	—	—	—	—	—	—	
Amphetamines ^l																											
8th Grade	6.2	6.5	7.2	7.9	8.7	9.1	8.1	7.2	6.9	6.5	6.7	5.5	-1.2s	2.6	3.3	3.6	3.6	4.2	4.6	3.8	3.3	3.4	3.4	3.2	2.8	-0.4	
10th Grade	8.2	8.2	9.6	10.2	11.9	12.4	12.1	10.7	10.4	11.1	11.7	10.7	-1.0	3.3	3.6	4.3	4.5	5.3	5.5	5.1	5.1	5.0	5.4	5.6	5.2	-0.4	
12th Grade	8.2	7.1	8.4	9.4	9.3	9.5	10.2	10.1	10.2	10.5	10.9	11.1	+0.2	3.2	2.8	3.7	4.0	4.0	4.1	4.8	4.6	4.5	5.0	5.6	5.5	-0.2	
Ritalin ^{lm}																											
8th Grade	—	—	—	—	—	—	—	—	—	—	2.9	2.8	-0.1	—	—	—	—	—	—	—	—	—	—	—	—	—	
10th Grade	—	—	—	—	—	—	—	—	—	—	4.8	4.8	0.0	—	—	—	—	—	—	—	—	—	—	—	—	—	
12th Grade	—	—	—	—	—	—	—	—	—	—	5.1	4.0	-1.1	—	—	—	—	—	—	—	—	—	—	—	—	—	
Methamphetamine ^{lm}																											
8th Grade	—	—	—	—	—	—	—	—	—	3.2	2.5	2.8	-0.6	—	—	—	—	—	—	—	—	—	1.1	0.8	1.3	1.1	-0.2
10th Grade	—	—	—	—	—	—	—	—	—	4.6	4.0	3.7	+0.2	—	—	—	—	—	—	—	—	—	1.8	2.0	1.5	1.8	+0.4
12th Grade	—	—	—	—	—	—	—	—	—	4.7	4.3	3.9	-0.3	—	—	—	—	—	—	—	—	—	1.7	1.9	1.5	1.7	+0.1
Ice ^m																											
8th Grade	—	—	—	—	—	—	—	—	—	—	—	—	—	—	—	—	—	—	—	—	—	—	—	—	—	—	
10th Grade	—	—	—	—	—	—	—	—	—	—	—	—	—	—	—	—	—	—	—	—	—	—	—	—	—	—	
12th Grade	1.4	1.3	1.7	1.8	2.4	2.8	2.3	3.0	1.9	2.2	2.5	3.0	+0.6	0.6	0.5	0.6	0.7	1.1	1.1	0.8	1.2	0.8	1.0	1.1	1.2	+0.1	
Barbiturates ^l																											
8th Grade	—	—	—	—	—	—	—	—	—	—	—	—	—	—	—	—	—	—	—	—	—	—	—	—	—	—	
10th Grade	—	—	—	—	—	—	—	—	—	—	—	—	—	—	—	—	—	—	—	—	—	—	—	—	—	—	
12th Grade	3.4	2.8	3.4	4.1	4.7	4.9	5.1	5.5	5.8	6.2	5.7	6.7	+1.0s	1.4	1.1	1.3	1.7	2.2	2.1	2.1	2.6	2.6	3.0	2.8	3.2	+0.4	
Tranquilizers ^{bj}																											
8th Grade	1.8	2.0	2.1	2.4	2.7	3.3	2.9	2.6	2.5	2.6	2.8	2.6	-0.3	0.8	0.8	0.9	1.1	1.2	1.5	1.2	1.2	1.1	1.4	1.2	1.2	0.0	
10th Grade	3.2	3.5	3.3	3.3	4.0	4.6	4.9	5.1	5.4	5.6	7.3	6.3	-1.0	1.2	1.5	1.1	1.5	1.7	1.7	2.2	2.2	2.2	2.5	2.9	2.9	0.0	
12th Grade	3.6	2.8	3.5	3.7	4.4	4.6	4.7	5.5	5.8	5.7	6.9	7.7	+0.8	1.4	1.0	1.2	1.4	1.8	2.0	1.8	2.4	2.5	2.6	2.9	3.3	+0.4	
Rohypnol ^{e,n}																											
8th Grade	—	—	—	—	—	1.0	0.8	0.8	0.5	0.5	0.7	0.3	-0.4	—	—	—	—	—	0.5	0.3	0.4	0.3	0.3	0.4	0.2	-0.2	
10th Grade	—	—	—	—	—	1.1	1.3	1.2	1.0	0.8	1.0	0.7	-0.3	—	—	—	—	—	0.5	0.5	0.4	0.5	0.4	0.2	0.4	+0.2	
12th Grade	—	—	—	—	—	1.1	1.2	1.4	1.0	0.8	0.9	1.6	— ^e	—	—	—	—	—	0.5	0.3	0.3	0.3	0.4	0.3	—	—	
GHB ^{lq}																											
8th Grade	—	—	—	—	—	—	—	—	—	1.2	1.1	0.8	-0.2	—	—	—	—	—	—	—	—	—	—	—	—	—	
10th Grade	—	—	—	—	—	—	—	—	—	1.1	1.0	1.4	+0.4	—	—	—	—	—	—	—	—	—	—	—	—	—	
12th Grade	—	—	—	—	—	—	—	—	—	1.9	1.6	1.5	-0.1	—	—	—	—	—	—	—	—	—	—	—	—	—	
Ketamine ^{lq}																											
8th Grade	—	—	—	—	—	—	—	—	—	1.6	1.3	1.3	0.0	—	—	—	—	—	—	—	—	—	—	—	—	—	
10th Grade	—	—	—	—	—	—	—	—	—	2.1	2.1	2.2	+0.1	—	—	—	—	—	—	—	—	—	—	—	—	—	
12th Grade	—	—	—	—	—	—	—	—	—	2.5	2.5	2.6	+0.1	—	—	—	—	—	—	—	—	—	—	—	—	—	

(Table continued on next page)

TABLE 2 (cont.)
Trends in Annual and 30-Day Prevalence of Use of Various Drugs
for Eighth, Tenth, and Twelfth Graders

	Annual												30-Day													
	1991	1992	1993	1994	1995	1996	1997	1998	1999	2000	2001	2002	'01-'02 change	1991	1992	1993	1994	1995	1996	1997	1998	1999	2000	2001	2002	'01-'02 change
Alcohol ^p																										
Any use																										
8th Grade	54.0	53.7	‡45.4	46.8	45.3	46.5	45.5	43.7	43.5	43.1	41.9	38.7	-3.2ss	25.1	26.1	‡24.3	25.5	24.6	26.2	24.5	23.0	24.0	22.4	21.5	19.6	-1.9s
10th Grade	72.3	70.2	‡63.4	63.9	63.5	65.0	65.2	62.7	63.7	65.3	63.5	60.0	-3.5ss	42.8	39.9	‡38.2	39.2	38.8	40.4	40.1	38.8	40.0	41.0	39.0	35.4	-3.6sss
12th Grade	77.7	76.8	‡72.7	73.0	73.7	72.5	74.8	74.3	73.8	73.2	73.3	71.5	-1.8	54.0	51.3	‡48.6	50.1	51.3	50.8	52.7	52.0	51.0	50.0	49.8	48.6	-1.2
Been Drunk ^m																										
8th Grade	17.5	18.3	18.2	18.2	18.4	19.8	18.4	17.9	18.5	18.5	16.6	15.0	-1.6s	7.6	7.5	7.8	8.7	8.3	9.6	8.2	8.4	9.4	8.3	7.7	6.7	-1.0
10th Grade	40.1	37.0	37.8	38.0	38.5	40.1	40.7	38.3	40.9	41.6	39.9	35.4	-4.5sss	20.5	18.1	19.8	20.3	20.8	21.3	22.4	21.1	22.5	23.5	21.9	18.3	-3.6sss
12th Grade	52.7	50.3	49.6	51.7	52.5	51.9	53.2	52.0	53.2	51.8	53.2	50.4	-2.8	31.6	29.9	28.9	30.8	33.2	31.3	34.2	32.9	32.9	32.3	32.7	30.3	-2.4
Cigarettes																										
Any use																										
8th Grade	—	—	—	—	—	—	—	—	—	—	—	—	—	14.3	15.5	16.7	18.6	19.1	21.0	19.4	19.1	17.5	14.6	12.2	10.7	-1.5s
10th Grade	—	—	—	—	—	—	—	—	—	—	—	—	—	20.8	21.5	24.7	25.4	27.9	30.4	29.8	27.6	25.7	23.9	21.3	17.7	-3.6sss
12th Grade	—	—	—	—	—	—	—	—	—	—	—	—	—	28.3	27.8	29.9	31.2	33.5	34.0	36.5	35.1	34.6	31.4	29.5	26.7	-2.8s
Bidis ^{lm}																										
8th Grade	—	—	—	—	—	—	—	—	—	3.9	2.7	2.7	0.0	—	—	—	—	—	—	—	—	—	—	—	—	—
10th Grade	—	—	—	—	—	—	—	—	—	6.4	4.9	3.1	-1.8ss	—	—	—	—	—	—	—	—	—	—	—	—	—
12th Grade	—	—	—	—	—	—	—	—	—	9.2	7.0	5.9	-1.2	—	—	—	—	—	—	—	—	—	—	—	—	—
Kreteks ^{lm}																										
8th Grade	—	—	—	—	—	—	—	—	—	—	2.6	2.6	-0.1	—	—	—	—	—	—	—	—	—	—	—	—	—
10th Grade	—	—	—	—	—	—	—	—	—	—	6.0	4.9	-1.2	—	—	—	—	—	—	—	—	—	—	—	—	—
12th Grade	—	—	—	—	—	—	—	—	—	—	10.1	8.4	-1.7	—	—	—	—	—	—	—	—	—	—	—	—	—
Smokeless Tobacco ^{c,p}																										
8th Grade	—	—	—	—	—	—	—	—	—	—	—	—	—	6.9	7.0	6.6	7.7	7.1	7.1	5.5	4.8	4.5	4.2	4.0	3.3	-0.8
10th Grade	—	—	—	—	—	—	—	—	—	—	—	—	—	10.0	9.6	10.4	10.5	9.7	8.6	8.9	7.5	6.5	6.1	6.9	6.1	-0.8
12th Grade	—	—	—	—	—	—	—	—	—	—	—	—	—	—	11.4	10.7	11.1	12.2	9.8	9.7	8.8	8.4	7.6	7.8	6.5	-1.4
Steroids ^m																										
8th Grade	1.0	1.1	0.9	1.2	1.0	0.9	1.0	1.2	1.7	1.7	1.6	1.5	-0.1	0.4	0.5	0.5	0.5	0.6	0.4	0.5	0.5	0.7	0.8	0.7	0.8	0.0
10th Grade	1.1	1.1	1.0	1.1	1.2	1.2	1.2	1.2	1.7	2.2	2.1	2.2	+0.1	0.6	0.6	0.5	0.6	0.6	0.5	0.7	0.6	0.9	1.0	0.9	1.0	+0.1
12th Grade	1.4	1.1	1.2	1.3	1.5	1.4	1.4	1.7	1.8	1.7	2.4	2.5	+0.1	0.8	0.6	0.7	0.9	0.7	0.7	1.0	1.1	0.9	0.8	1.3	1.4	+0.1

NOTES: Level of significance of difference between the two most recent classes: s = .05, ss = .01, sss = .001. '—' indicates data not available.
 ‡ indicates some change in the question. See relevant footnote for that drug. See relevant figure to assess the impact of the wording changes.
 See Table 1 for relevant footnotes.

Any apparent inconsistency between the change estimate and the prevalence of use estimates for the two most recent classes is due to rounding error.

SOURCE: The Monitoring the Future Study, the University of Michigan.

TABLE 3

Trends in 30-Day Prevalence of Daily Use of Various Drugs for Eighth, Tenth, and Twelfth Graders

	Daily												'01-'02 change
	1991	1992	1993	1994	1995	1996	1997	1998	1999	2000	2001	2002	
Marijuana/Hashish, daily ^r													
8th Grade	0.2	0.2	0.4	0.7	0.8	1.5	1.1	1.1	1.4	1.3	1.3	1.2	-0.1
10th Grade	0.8	0.8	1.0	2.2	2.8	3.5	3.7	3.6	3.8	3.8	4.5	3.9	-0.6s
12th Grade	2.0	1.9	2.4	3.6	4.6	4.9	5.8	5.6	6.0	6.0	5.8	6.0	+0.1
Alcohol ^{o,r}													
Any daily use													
8th Grade	0.5	0.6 ‡	1.0	1.0	0.7	1.0	0.8	0.9	1.0	0.8	0.9	0.7	-0.2
10th Grade	1.3	1.2 ‡	1.8	1.7	1.7	1.6	1.7	1.9	1.9	1.8	1.9	1.8	-0.1
12th Grade	3.6	3.4 ‡	3.4	2.9	3.5	3.7	3.9	3.9	3.4	2.9	3.6	3.5	-0.1
Been Drunk, daily ^{m,r}													
8th Grade	0.1	0.1	0.2	0.3	0.2	0.2	0.2	0.3	0.4	0.3	0.2	0.3	0.0
10th Grade	0.2	0.3	0.4	0.4	0.6	0.4	0.6	0.6	0.7	0.5	0.6	0.5	-0.2
12th Grade	0.9	0.8	0.9	1.2	1.3	1.6	2.0	1.5	1.9	1.7	1.4	1.2	-0.2
5+ drinks in a row in last 2 weeks													
8th Grade	12.9	13.4	13.5	14.5	14.5	15.6	14.5	13.7	15.2	14.1	13.2	12.4	-0.8
10th Grade	22.9	21.1	23.0	23.6	24.0	24.8	25.1	24.3	25.6	26.2	24.9	22.4	-2.4s
12th Grade	29.8	27.9	27.5	28.2	29.8	30.2	31.3	31.5	30.8	30.0	29.7	28.6	-1.1
Cigarettes													
Any daily use													
8th Grade	7.2	7.0	8.3	8.8	9.3	10.4	9.0	8.8	8.1	7.4	5.5	5.1	-0.3
10th Grade	12.6	12.3	14.2	14.6	16.3	18.3	18.0	15.8	15.9	14.0	12.2	10.1	-2.1ss
12th Grade	18.5	17.2	19.0	19.4	21.6	22.2	24.6	22.4	23.1	20.6	19.0	16.9	-2.1s
1/2 pack+/day													
8th Grade	3.1	2.9	3.5	3.6	3.4	4.3	3.5	3.6	3.3	2.8	2.3	2.1	-0.2
10th Grade	6.5	6.0	7.0	7.6	8.3	9.4	8.6	7.9	7.6	6.2	5.5	4.4	-1.2s
12th Grade	10.7	10.0	10.9	11.2	12.4	13.0	14.3	12.6	13.2	11.3	10.3	9.1	-1.2
Smokeless Tobacco, daily ^{e,p}													
8th Grade	1.6	1.8	1.5	1.9	1.2	1.5	1.0	1.0	0.9	0.9	1.2	0.8	-0.4
10th Grade	3.3	3.0	3.3	3.0	2.7	2.2	2.2	2.2	1.5	1.9	2.2	1.7	-0.6
12th Grade	—	4.3	3.3	3.9	3.6	3.3	4.4	3.2	2.9	3.2	2.8	2.0	-0.9

NOTES: Level of significance of difference between the two most recent classes: s = .05, ss = .01, sss = .001. — indicates data not available. † indicates some change in the question. See relevant footnote for that drug. See relevant figure to assess the impact of the wording changes. See Table 1 for relevant footnotes.

Any apparent inconsistency between the change estimate and the prevalence of use estimates for the two most recent classes is due to rounding error.

SOURCE: The Monitoring the Future Study, the University of Michigan.

Footnotes for Table 4 to Table 7

‡ indicates some change in the question. See relevant footnote for that drug. See relevant figure to assess the impact of the wording changes.

^aUse of “any illicit drug” includes any use of marijuana, LSD, other hallucinogens, crack, other cocaine, or heroin, or any use of other narcotics, amphetamines, barbiturates, methaqualone (excluded since 1990), or tranquilizers not under a doctor’s orders.

^bBeginning in 1982 the question about amphetamine use was revised to get respondents to exclude the inappropriate reporting of nonprescription amphetamines. The prevalence of use rate dropped slightly as a result of this methodological change.

^cIn 2001 the question text was changed on half of the questionnaire forms for each grade. “Other psychedelics” was changed to “other hallucinogens” and “shrooms” was added to the list of examples. For the tranquilizer list of examples, Miltown was replaced with Xanax. The 2001 data presented here are based on the changed forms only; N is one-half of N indicated. In 2002 the remaining forms were changed to the new wording. The 2002 data are based on all forms. Data for “any illicit drug other than marijuana” and “hallucinogens” are also affected by these changes and have been handled in a parallel manner.

^dData based on four of five forms in 1976–88; N is four-fifths of N indicated. Data based on five of six forms in 1989–98; N is five-sixths of N indicated. Beginning in 1999, data based on three of six forms; N is three-sixths of N indicated.

^eAdjusted for underreporting of amyl and butyl nitrites. See text for details.

^fData based on one form; N is one-fifth of N indicated in 1979–88 and one-sixth of N indicated beginning in 1989. Data for MDMA based on two of six forms in 2002; N is two-sixths of N indicated. Data for Rohypnol for 2001 and 2002 are not comparable due to changes in the questionnaire forms.

^gQuestion text changed slightly in 1987.

^hAdjusted for underreporting of PCP. See text for details.

ⁱData based on one of five forms in 1986; N is one-fifth of N indicated. Data based on two forms in 1987–89; N is two-fifths of N indicated in 1987–88 and two-sixths of N indicated in 1989. Data based on six forms beginning in 1990.

^jData based on one form in 1987–89; N is one-fifth of N indicated in 1987–88 and one-sixth of N indicated in 1989. Data based on four of six forms beginning in 1990; N is four-sixths of N indicated.

^kIn 1995 the heroin question was changed in half of the questionnaire forms. Separate questions were asked for use with injection and without injection. Data presented here represent the combined data from all forms.

^lData based on three of six forms; N is three-sixths of N indicated.

^mOnly drug use not under a doctor’s orders is included here.

ⁿIn 2002 the question text was changed in half of the questionnaire forms. The list of examples of narcotics other than heroin was updated: Talwin, laudanum, and paregoric—all of which had negligible rates of use by 2001—were replaced with Vicodin, Oxycontin, Percocet, and Dilaudid. The 2001 data presented here are based on all forms. The 2002 estimates are based on the difference between the data from the 2001 and 2002 unchanged forms added to the 2001 prevalence of use rate. The change score given in the right-hand column is the difference between the data from the unchanged forms only in both 2001 and 2002.

^oData based on two of six forms; N is two-sixths of N indicated. Steroid data based on one of six forms in 1989–90; N is one-sixth of N indicated in 1989–90. Steroid data based on two of six forms since 1991; N is two-sixths of N indicated since 1991.

^pData based on five forms in 1975–88, six forms in 1989, one form in 1990 (N is one-sixth of N indicated in 1990), and six forms of data adjusted by one-form data beginning in 1991.

^qData based on five forms in 1975–88, six forms in 1989, and one of six forms beginning in 1990; N is one-sixth of N indicated beginning in 1990.

^rData based on five forms in 1975–88 and on six forms in 1989–92. In 1993, the question text was changed slightly in three of six forms to indicate that a “drink” meant “more than a few sips.” The 1993 data are based on the changed forms only; N is one-half of N indicated. In 1994 the remaining forms were changed to the new wording. Beginning in 1994, the data are based on all forms.

^sThe prevalence of use of smokeless tobacco was not asked of twelfth graders in 1990 and 1991. Prior to 1990 the prevalence of use question on smokeless tobacco was located near the end of one twelfth-grade questionnaire form, whereas after 1991 the question was placed earlier and in a different form. This shift could explain the discontinuities between the corresponding data.

^tData based on two of six forms in 2000; N is two-sixths of N indicated. Data based on three of six forms beginning in 2001; N is three-sixths of N indicated. Data for GHB based on one form in 2002; N is one-sixth of N indicated.

SOURCE: The Monitoring the Future Study, the University of Michigan.

TABLE 8

Trends in Harmfulness of Drugs as Perceived by Eighth and Tenth Graders, 1991–2002

How much do you think people risk harming themselves (physically or in other ways), if they . . .	Percentage saying "great risk" ^a																									
	8th Grade												10th Grade													
	1991	1992	1993	1994	1995	1996	1997	1998	1999	2000	2001	2002	'01-'02 change	1991	1992	1993	1994	1995	1996	1997	1998	1999	2000	2001	2002	'01-'02 change
Try marijuana once or twice	40.4	39.1	36.2	31.6	28.9	27.9	25.3	28.1	28.0	29.0	27.7	28.2	+0.5	30.0	31.9	29.7	24.4	21.5	20.0	18.8	19.6	19.2	18.5	17.9	19.9	+2.0s
Smoke marijuana occasionally	57.9	56.3	53.8	48.6	45.9	44.3	43.1	45.0	45.7	47.4	46.3	46.0	-0.3	48.6	48.9	46.1	38.9	35.4	32.8	31.9	32.5	33.5	32.4	31.2	32.0	+0.8
Smoke marijuana regularly	83.8	82.0	79.6	74.3	73.0	70.9	72.7	73.0	73.3	74.8	72.2	71.7	-0.5	82.1	81.1	78.5	71.3	67.9	65.9	65.9	65.8	65.9	64.7	62.8	60.8	-2.0
Try inhalants once or twice ^b	35.9	37.0	36.5	37.9	36.4	40.8	40.1	38.9	40.8	41.2	45.6	42.8	-2.8s	37.8	38.7	40.9	42.7	41.6	47.2	47.5	45.8	48.2	46.6	49.9	48.7	-1.2
Try inhalants regularly ^b	65.6	64.4	64.6	65.5	64.8	68.2	68.7	67.2	68.8	69.9	71.6	69.9	-1.7	69.8	67.9	69.6	71.5	71.8	75.8	74.5	73.3	76.3	75.0	76.4	73.4	-3.0ss
Take LSD once or twice ^c	—	—	42.1	38.3	36.7	36.5	37.0	34.9	34.1	34.0	31.6	29.6	-2.0	—	—	48.7	46.5	44.7	45.1	44.5	43.5	45.0	43.0	41.3	40.1	-1.2
Take LSD regularly ^c	—	—	68.3	65.8	64.4	63.6	64.1	59.6	58.8	57.5	52.9	49.3	-3.6	—	—	78.9	75.9	75.5	75.3	73.8	72.3	73.9	72.0	68.8	64.9	-3.9ss
Try MDMA (Ecstasy) once or twice ^d	—	—	—	—	—	—	—	—	—	—	35.8	38.9	+3.1	—	—	—	—	—	—	—	—	—	—	39.4	43.5	+4.1s
Take MDMA (Ecstasy) occasionally ^d	—	—	—	—	—	—	—	—	—	—	55.5	61.8	+6.4sss	—	—	—	—	—	—	—	—	—	—	64.8	67.3	+2.6
Try crack once or twice ^b	62.8	61.2	57.2	54.4	50.8	51.0	49.9	49.3	48.7	48.5	48.6	47.4	-1.2	70.4	69.6	66.6	64.7	60.9	60.9	59.2	58.0	57.8	56.1	57.1	57.4	+0.3
Take crack occasionally ^b	82.2	79.6	76.8	74.4	72.1	71.6	71.2	70.6	70.6	70.1	70.0	69.7	-0.2	87.4	86.4	84.4	83.1	81.2	80.3	78.7	77.5	79.1	76.9	77.3	75.7	-1.7
Try cocaine powder once or twice ^b	55.5	54.1	50.7	48.4	44.9	45.2	45.0	44.0	43.3	43.3	43.9	43.2	-0.7	59.1	59.2	57.5	56.4	53.5	53.6	52.2	50.9	51.6	48.8	50.6	51.3	+0.7
Take cocaine powder occasionally ^b	77.0	74.3	71.8	69.1	66.4	65.7	65.8	65.2	65.4	65.5	65.8	64.9	-0.9	82.2	80.1	79.1	77.8	75.6	75.0	73.9	71.8	73.6	70.9	72.3	71.0	-1.4
Try heroin once or twice without using a needle ^c	—	—	—	—	60.1	61.3	63.0	62.8	63.0	62.0	61.1	62.6	+1.5	—	—	—	—	70.7	72.1	73.1	71.7	73.7	71.7	72.0	72.2	+0.1
Take heroin occasionally without using a needle ^c	—	—	—	—	76.8	76.6	79.2	79.0	78.9	78.6	78.5	78.5	0.0	—	—	—	—	85.1	85.8	86.5	84.9	86.5	85.2	85.4	83.4	-2.0
Try one or two drinks of an alcoholic beverage (beer, wine, liquor)	11.0	12.1	12.4	11.6	11.6	11.8	10.4	12.1	11.6	11.9	12.2	12.5	+0.3	9.0	10.1	10.9	9.4	9.3	8.9	9.0	10.1	10.5	9.6	9.8	11.5	+1.8ss
Take one or two drinks nearly every day	31.8	32.4	32.6	29.9	30.5	28.6	29.1	30.3	29.7	30.4	30.0	29.6	-0.4	36.1	36.8	35.9	32.5	31.7	31.2	31.8	31.9	32.9	32.3	31.5	31.0	-0.5
Have five or more drinks once or twice each weekend	59.1	58.0	57.7	54.7	54.1	51.8	55.6	56.0	55.3	55.9	56.1	56.4	+0.4	54.7	55.9	54.9	52.9	52.0	50.9	51.8	52.5	51.9	51.0	50.7	51.7	+1.0
Smoke one or more packs of cigarettes per day ^e	51.6	50.8	52.7	50.8	49.8	50.4	52.6	54.3	54.8	58.8	57.1	57.5	+0.4	60.3	59.3	60.7	59.0	57.0	57.9	59.9	61.9	62.7	65.9	64.7	64.3	-0.4
Use smokeless tobacco regularly	35.1	35.1	36.9	35.5	33.5	34.0	35.2	36.5	37.1	39.0	38.2	39.4	+1.1	40.3	39.6	44.2	42.2	38.2	41.0	42.2	42.8	44.2	46.7	46.2	46.9	+0.7
Take steroids ^f	64.2	69.5	70.2	67.6	—	—	—	—	—	—	—	—	—	67.1	72.7	73.4	72.5	—	—	—	—	—	—	—	—	—
<i>Approx. N (in thousands) =</i>	17.4	18.7	18.4	17.4	17.5	17.9	18.8	18.1	16.7	16.7	16.2	15.1		14.7	14.8	15.3	15.9	17.0	15.7	15.6	15.0	13.6	14.3	14.0	14.3	

NOTES: Level of significance of difference between the two most recent classes: s = .05, ss = .01, sss = .001. '—' indicates data not available.

Any apparent inconsistency between the change estimate and the prevalence of use estimates for the two most recent classes is due to rounding error.

SOURCE: The Monitoring the Future Study, the University of Michigan.

^aAnswer alternatives were: (1) No risk, (2) Slight risk, (3) Moderate risk, (4) Great risk, and (5) Can't say, drug unfamiliar.

^bBeginning in 1997, data based on two-thirds of N indicated due to changes in questionnaire forms.

^cData based on one of two forms in 1993–96; N is one-half of N indicated. Beginning in 1997, data based on one-third of N indicated due to changes in questionnaire forms.

^dData based on one-third of N indicated due to changes in questionnaire forms.

^eBeginning in 1999, data based on two-thirds of N indicated due to changes in questionnaire forms.

^fData based on two forms in 1991 and 1992. Data based on one of two forms in 1993 and 1994; N is one-half of N indicated.

TABLE 9
Long-Term Trends in Harmfulness of Drugs as Perceived by Twelfth Graders

<i>How much do you think people risk harming themselves (physically or in other ways), if they . . .</i>	Percentage saying "great risk" ^a														
	12th Grade														
	Class of 1975	Class of 1976	Class of 1977	Class of 1978	Class of 1979	Class of 1980	Class of 1981	Class of 1982	Class of 1983	Class of 1984	Class of 1985	Class of 1986	Class of 1987	Class of 1988	Class of 1989
Try marijuana once or twice	15.1	11.4	9.5	8.1	9.4	10.0	13.0	11.5	12.7	14.7	14.8	15.1	18.4	19.0	23.6
Smoke marijuana occasionally	18.1	15.0	13.4	12.4	13.5	14.7	19.1	18.3	20.6	22.6	24.5	25.0	30.4	31.7	36.5
Smoke marijuana regularly	43.3	38.6	36.4	34.9	42.0	50.4	57.6	60.4	62.8	66.9	70.4	71.3	73.5	77.0	77.5
Try LSD once or twice	49.4	45.7	43.2	42.7	41.6	43.9	45.5	44.9	44.7	45.4	43.5	42.0	44.9	45.7	46.0
Take LSD regularly	81.4	80.8	79.1	81.1	82.4	83.0	83.5	83.5	83.2	83.8	82.9	82.6	83.8	84.2	84.3
Try PCP once or twice	—	—	—	—	—	—	—	—	—	—	—	—	55.6	58.8	56.6
Try MDMA (Ecstasy) once or twice	—	—	—	—	—	—	—	—	—	—	—	—	—	—	—
Try cocaine once or twice	42.6	39.1	35.6	33.2	31.5	31.3	32.1	32.8	33.0	35.7	34.0	33.5	47.9	51.2	54.9
Take cocaine occasionally	—	—	—	—	—	—	—	—	—	—	—	54.2	66.8	69.2	71.8
Take cocaine regularly	73.1	72.3	68.2	68.2	69.5	69.2	71.2	73.0	74.3	78.8	79.0	82.2	88.5	89.2	90.2
Try crack once or twice	—	—	—	—	—	—	—	—	—	—	—	—	57.0	62.1	62.9
Take crack occasionally	—	—	—	—	—	—	—	—	—	—	—	—	70.4	73.2	75.3
Take crack regularly	—	—	—	—	—	—	—	—	—	—	—	—	84.6	84.8	85.6
Try cocaine powder once or twice	—	—	—	—	—	—	—	—	—	—	—	—	45.3	51.7	53.8
Take cocaine powder occasionally	—	—	—	—	—	—	—	—	—	—	—	—	56.8	61.9	65.8
Take cocaine powder regularly	—	—	—	—	—	—	—	—	—	—	—	—	81.4	82.9	83.9
Try heroin once or twice	60.1	58.9	55.8	52.9	50.4	52.1	52.9	51.1	50.8	49.8	47.3	45.8	53.6	54.0	53.8
Take heroin occasionally	75.6	75.6	71.9	71.4	70.9	70.9	72.2	69.8	71.8	70.7	69.8	68.2	74.6	73.8	75.5
Take heroin regularly	87.2	88.6	86.1	86.6	87.5	86.2	87.5	86.0	86.1	87.2	86.0	87.1	88.7	88.8	89.5
Try heroin once or twice without using a needle	—	—	—	—	—	—	—	—	—	—	—	—	—	—	—
Take heroin occasionally without using a needle	—	—	—	—	—	—	—	—	—	—	—	—	—	—	—
Try amphetamines once or twice	35.4	33.4	30.8	29.9	29.7	29.7	26.4	25.3	24.7	25.4	25.2	25.1	29.1	29.6	32.8
Take amphetamines regularly	69.0	67.3	66.6	67.1	69.9	69.1	66.1	64.7	64.8	67.1	67.2	67.3	69.4	69.8	71.2
Try crystal meth. (ice) once or twice	—	—	—	—	—	—	—	—	—	—	—	—	—	—	—
Try barbiturates once or twice	34.8	32.5	31.2	31.3	30.7	30.9	28.4	27.5	27.0	27.4	26.1	25.4	30.9	29.7	32.2
Take barbiturates regularly	69.1	67.7	68.6	68.4	71.6	72.2	69.9	67.6	67.7	68.5	68.3	67.2	69.4	69.6	70.5
Try one or two drinks of an alcoholic beverage (beer, wine, liquor)	5.3	4.8	4.1	3.4	4.1	3.8	4.6	3.5	4.2	4.6	5.0	4.6	6.2	6.0	6.0
Take one or two drinks nearly every day	21.5	21.2	18.5	19.6	22.6	20.3	21.6	21.6	21.6	23.0	24.4	25.1	26.2	27.3	28.5
Take four or five drinks nearly every day	63.5	61.0	62.9	63.1	66.2	65.7	64.5	65.5	66.8	68.4	69.8	66.5	69.7	68.5	69.8
Have five or more drinks once or twice each weekend	37.8	37.0	34.7	34.5	34.9	35.9	36.3	36.0	38.6	41.7	43.0	39.1	41.9	42.6	44.0
Smoke one or more packs of cigarettes per day	51.3	56.4	58.4	59.0	63.0	63.7	63.3	60.5	61.2	63.8	66.5	66.0	68.6	68.0	67.2
Use smokeless tobacco regularly	—	—	—	—	—	—	—	—	—	—	—	25.8	30.0	33.2	32.9
Take steroids	—	—	—	—	—	—	—	—	—	—	—	—	—	—	63.8
	<i>Approx. N = 2804 2918 3052 3770 3250 3234 3604 3557 3305 3262 3250 3020 3315 3276 2796</i>														

^aAnswer alternatives were: (1) No risk, (2) Slight risk, (3) Moderate risk, (4) Great risk, and (5) Can't say, drug unfamiliar.

(Table continued on next page)



TABLE 9 (cont.)
Long-Term Trends in Harmfulness of Drugs as Perceived by Twelfth Graders

<i>How much do you think people risk harming themselves (physically or in other ways), if they . . .</i>	Percentage saying "great risk" ^a													'01-'02 change
	12th Grade													
	Class of 1990	Class of 1991	Class of 1992	Class of 1993	Class of 1994	Class of 1995	Class of 1996	Class of 1997	Class of 1998	Class of 1999	Class of 2000	Class of 2001	Class of 2002	
Try marijuana once or twice	23.1	27.1	24.5	21.9	19.5	16.3	15.6	14.9	16.7	15.7	13.7	15.3	16.1	+0.8
Smoke marijuana occasionally	36.9	40.6	39.6	35.6	30.1	25.6	25.9	24.7	24.4	23.9	23.4	23.5	23.2	-0.3
Smoke marijuana regularly	77.8	78.6	76.5	72.5	65.0	60.8	59.9	58.1	58.5	57.4	58.3	57.4	53.0	-4.4s
Try LSD once or twice	44.7	46.6	42.3	39.5	38.8	36.4	36.2	34.7	37.4	34.9	34.3	33.2	36.7	+3.5s
Take LSD regularly	84.5	84.3	81.8	79.4	79.1	78.1	77.8	76.6	76.5	76.1	75.9	74.1	73.9	-0.2
Try PCP once or twice	55.2	51.7	54.8	50.8	51.5	49.1	51.0	48.8	46.8	44.8	45.0	46.2	48.3	+2.1
Try MDMA (Ecstasy) once or twice	—	—	—	—	—	—	—	33.8	34.5	35.0	37.9	45.7	52.2	+6.5sss
Try cocaine once or twice	59.4	59.4	56.8	57.6	57.2	53.7	54.2	53.6	54.6	52.1	51.1	50.7	51.2	+0.4
Take cocaine occasionally	73.9	75.5	75.1	73.3	73.7	70.8	72.1	72.4	70.1	70.1	69.5	69.9	68.3	-1.6
Take cocaine regularly	91.1	90.4	90.2	90.1	89.3	87.9	88.3	87.1	86.3	85.8	86.2	84.1	84.5	+0.4
Try crack once or twice	64.3	60.6	62.4	57.6	58.4	54.6	56.0	54.0	52.2	48.2	48.4	49.4	50.8	+1.4
Take crack occasionally	80.4	76.5	76.3	73.9	73.8	72.8	71.4	70.3	68.7	67.3	65.8	65.4	65.6	+0.2
Take crack regularly	91.6	90.1	89.3	87.5	89.6	88.6	88.0	86.2	85.3	85.4	85.3	85.8	84.1	-1.7
Try cocaine powder once or twice	53.9	53.6	57.1	53.2	55.4	52.0	53.2	51.4	48.5	46.1	47.0	49.0	49.5	+0.5
Take cocaine powder occasionally	71.1	69.8	70.8	68.6	70.6	69.1	68.8	67.7	65.4	64.2	64.7	63.2	64.4	+1.2
Take cocaine powder regularly	90.2	88.9	88.4	87.0	88.6	87.8	86.8	86.0	84.1	84.6	85.5	84.4	84.2	-0.2
Try heroin once or twice	55.4	55.2	50.9	50.7	52.8	50.9	52.5	56.7	57.8	56.0	54.2	55.6	56.0	+0.5
Take heroin occasionally	76.6	74.9	74.2	72.0	72.1	71.0	74.8	76.3	76.9	77.3	74.6	75.9	76.6	+0.7
Take heroin regularly	90.2	89.6	89.2	88.3	88.0	87.2	89.5	88.9	89.1	89.9	89.2	88.3	88.5	+0.1
Try heroin once or twice without using a needle	—	—	—	—	—	55.6	58.6	60.5	59.6	58.5	61.6	60.7	60.6	-0.1
Take heroin occasionally without using a needle	—	—	—	—	—	71.2	71.0	74.3	73.4	73.6	74.7	74.4	74.7	+0.3
Try amphetamines once or twice	32.2	36.3	32.6	31.3	31.4	28.8	30.8	31.0	35.3	32.2	32.6	34.7	34.4	-0.3
Take amphetamines regularly	71.2	74.1	72.4	69.9	67.0	65.9	66.8	66.0	67.7	66.4	66.3	67.1	64.8	-2.4
Try crystal meth. (ice) once or twice	—	61.6	61.9	57.5	58.3	54.4	55.3	54.4	52.7	51.2	51.3	52.7	53.8	+1.0
Try barbiturates once or twice	32.4	35.1	32.2	29.2	29.9	26.3	29.1	26.9	29.0	26.1	25.0	25.7	26.2	+0.5
Take barbiturates regularly	70.2	70.5	70.2	66.1	63.3	61.6	60.4	56.8	56.3	54.1	52.3	50.3	49.3	-1.0
Try one or two drinks of an alcoholic beverage (beer, wine, liquor)	8.3	9.1	8.6	8.2	7.6	5.9	7.3	6.7	8.0	8.3	6.4	8.7	7.6	-1.1
Take one or two drinks nearly every day	31.3	32.7	30.6	28.2	27.0	24.8	25.1	24.8	24.3	21.8	21.7	23.4	21.0	-2.4
Take four or five drinks nearly every day	70.9	69.5	70.5	67.8	66.2	62.8	65.6	63.0	62.1	61.1	59.9	60.7	58.8	-1.9
Have five or more drinks once or twice each weekend	47.1	48.6	49.0	48.3	46.5	45.2	49.5	43.0	42.8	43.1	42.7	43.6	42.2	-1.4
Smoke one or more packs of cigarettes per day	68.2	69.4	69.2	69.5	67.6	65.6	68.2	68.7	70.8	70.8	73.1	73.3	74.2	+1.0
Use smokeless tobacco regularly	34.2	37.4	35.5	38.9	36.6	33.2	37.4	38.6	40.9	41.1	42.2	45.4	42.6	-2.9
Take steroids	69.9	65.6	70.7	69.1	66.1	66.4	67.6	67.2	68.1	62.1	57.9	58.9	57.1	-1.8

Approx. N = 2553 2549 2684 2759 2591 2603 2449 2579 2564 2306 2130 2173 2198

NOTES: Level of significance of difference between the two most recent classes: s = .05, ss = .01, sss = .001. '—' indicates data not available. Any apparent inconsistency between the change estimate and the prevalence of use estimates for the two most recent classes is due to rounding error.

SOURCE: The Monitoring the Future Study, the University of Michigan.

TABLE 10
Trends in Disapproval of Drug Use by Eighth and Tenth Graders, 1991–2002

Do you disapprove of people who . . .	Percentage who "disapprove" or "strongly disapprove" ^a																									
	8th Grade												10th Grade													
	1991	1992	1993	1994	1995	1996	1997	1998	1999	2000	2001	2002	'01-'02 change	1991	1992	1993	1994	1995	1996	1997	1998	1999	2000	2001	2002	'01-'02 change
Try marijuana once or twice	84.6	82.1	79.2	72.9	70.7	67.5	67.6	69.0	70.7	72.5	72.4	73.3	+0.9	74.6	74.8	70.3	62.4	59.8	55.5	54.1	56.0	56.2	54.9	54.8	57.8	+3.0s
Smoke marijuana occasionally	89.5	88.1	85.7	80.9	79.7	76.5	78.1	78.4	79.3	80.6	80.6	80.9	+0.2	83.7	83.6	79.4	72.3	70.0	66.9	66.2	67.3	68.2	67.2	66.2	68.3	+2.1
Smoke marijuana regularly	92.1	90.8	88.9	85.3	85.1	82.8	84.6	84.5	84.5	85.3	84.5	85.3	+0.9	90.4	90.0	87.4	82.2	81.1	79.7	79.7	80.1	79.8	79.1	78.0	78.6	+0.6
Try inhalants once or twice ^b	84.9	84.0	82.5	81.6	81.8	82.9	84.1	83.0	85.2	85.4	86.6	86.1	-0.5	85.2	85.6	84.8	84.9	84.5	86.0	86.9	85.6	88.4	87.5	87.8	88.6	+0.8
Take inhalants regularly ^b	90.6	90.0	88.9	88.1	88.8	89.3	90.3	89.5	90.3	90.2	90.5	90.4	0.0	91.0	91.5	90.9	91.0	90.9	91.7	91.7	91.1	92.4	91.8	91.3	91.8	+0.5
Take LSD once or twice ^c	—	—	77.1	75.2	71.6	70.9	72.1	69.1	69.4	66.7	64.6	62.6	-2.0	—	—	82.1	79.3	77.9	76.8	76.6	76.7	77.8	77.0	75.4	74.6	-0.8
Take LSD regularly ^c	—	—	79.8	78.4	75.8	75.3	76.3	72.5	72.5	69.3	67.0	65.5	-1.5	—	—	86.8	85.6	84.8	84.5	83.4	82.9	84.3	82.1	80.8	79.4	-1.4
Try MDMA (Ecstasy) once or twice ^d	—	—	—	—	—	—	—	—	—	—	69.0	74.3	+5.2sss	—	—	—	—	—	—	—	—	—	—	72.6	77.4	+4.9ss
Take MDMA (Ecstasy) occasionally ^d	—	—	—	—	—	—	—	—	—	—	73.6	78.6	+5.0sss	—	—	—	—	—	—	—	—	—	—	81.0	84.6	+3.6ss
Try crack once or twice ^b	91.7	90.7	89.1	86.9	85.9	85.0	85.7	85.4	86.0	85.4	86.0	86.2	+0.2	92.5	92.5	91.4	89.9	88.7	88.2	87.4	87.1	87.8	87.1	86.9	88.0	+1.2
Take crack occasionally ^b	93.3	92.5	91.7	89.9	89.8	89.3	90.3	89.5	89.9	88.8	89.8	89.6	-0.1	94.3	94.4	93.6	92.5	91.7	91.9	91.0	90.6	91.5	90.9	90.6	91.0	+0.3
Try cocaine powder once or twice ^b	91.2	89.6	88.5	86.1	85.3	83.9	85.1	84.5	85.2	84.8	85.6	85.8	+0.2	90.8	91.1	90.0	88.1	86.8	86.1	85.1	84.9	86.0	84.8	85.3	86.4	+1.2
Take cocaine powder occasionally ^b	93.1	92.4	91.6	89.7	89.7	88.7	90.1	89.3	89.9	88.8	89.6	89.9	+0.2	94.0	94.0	93.2	92.1	91.4	91.1	90.4	89.7	90.7	89.9	90.2	89.9	-0.2
Try heroin once or twice without using a needle ^c	—	—	—	—	85.8	85.0	87.7	87.3	88.0	87.2	87.2	87.8	+0.6	—	—	—	—	89.7	89.5	89.1	88.6	90.1	90.1	89.1	89.2	+0.1
Take heroin occasionally without using a needle ^c	—	—	—	—	88.5	87.7	90.1	89.7	90.2	88.9	88.9	89.6	+0.7	—	—	—	—	91.6	91.7	91.4	90.5	91.8	92.3	90.8	90.7	-0.1
Try one or two drinks of an alcoholic beverage (beer, wine, liquor)	51.7	52.2	50.9	47.8	48.0	45.5	45.7	47.5	48.3	48.7	49.8	51.1	+1.3	37.6	39.9	38.5	36.5	36.1	34.2	33.7	34.7	35.1	33.4	34.7	37.7	+3.0ss
Take one or two drinks nearly every day	82.2	81.0	79.6	76.7	75.9	74.1	76.6	76.9	77.0	77.8	77.4	78.3	+0.9	81.7	81.7	78.6	75.2	75.4	73.8	75.4	74.6	75.4	73.8	73.8	74.9	+1.1
Have five or more drinks once or twice each weekend	85.2	83.9	83.3	80.7	80.7	79.1	81.3	81.0	80.3	81.2	81.6	81.9	+0.3	76.7	77.6	74.7	72.3	72.2	70.7	70.2	70.5	69.9	68.2	69.2	71.5	+2.4s
Smoke one or more packs of cigarettes per day ^e	82.8	82.3	80.6	78.4	78.6	77.3	80.3	80.0	81.4	81.9	83.5	84.6	+1.1	79.4	77.8	76.5	73.9	73.2	71.6	73.8	75.3	76.1	76.7	78.2	80.6	+2.4s
Use smokeless tobacco regularly	79.1	77.2	77.1	75.1	74.0	74.1	76.5	76.3	78.0	79.2	79.4	80.6	+1.3	75.4	74.6	73.8	71.2	71.0	71.0	72.3	73.2	75.1	75.8	76.1	78.7	+2.7ss
Take steroids ^f	89.8	90.3	89.9	87.9	—	—	—	—	—	—	—	—	—	90.0	91.0	91.2	90.8	—	—	—	—	—	—	—	—	—
<i>Approx. N (in thousands) =</i>	17.4	18.5	18.4	17.4	17.6	18.0	18.8	18.1	16.7	16.7	16.2	15.1		14.8	14.8	15.3	15.9	17.0	15.7	15.6	15.0	13.6	14.3	14.0	14.3	

NOTES: Level of significance of difference between the two most recent classes: s = .05, ss = .01, sss = .001. '—' indicates data not available.

Any apparent inconsistency between the change estimate and the prevalence of use estimates for the two years is due to rounding error.

SOURCE: The Monitoring the Future Study, the University of Michigan.

^aAnswer alternatives were: (1) Don't disapprove, (2) Disapprove, (3) Strongly disapprove, and (4) Can't say, drug unfamiliar.

^bBeginning in 1997, data based on two-thirds of N indicated due to changes in questionnaire forms.

^cData based on one of two forms in 1993–96; N is one-half of N indicated. Beginning in 1997, data based on one-third of N indicated due to changes in questionnaire forms.

^dData based on one-third of N indicated due to changes in questionnaire forms.

^eBeginning in 1999, data based on two-thirds of N indicated due to changes in questionnaire forms.

^fData based on two forms in 1991 and 1992 and on one of two forms in 1993 and 1994; N is one-half of N indicated.

TABLE 11
Long-Term Trends in Disapproval of Drug Use by Twelfth Graders

Do you disapprove of people (who are 18 or older) doing each of the following? ^a	Percentage "disapproving" ^b														
	12th Grade														
	Class of 1975	Class of 1976	Class of 1977	Class of 1978	Class of 1979	Class of 1980	Class of 1981	Class of 1982	Class of 1983	Class of 1984	Class of 1985	Class of 1986	Class of 1987	Class of 1988	Class of 1989
Try marijuana once or twice	47.0	38.4	33.4	33.4	34.2	39.0	40.0	45.5	46.3	49.3	51.4	54.6	56.6	60.8	64.6
Smoke marijuana occasionally	54.8	47.8	44.3	43.5	45.3	49.7	52.6	59.1	60.7	63.5	65.8	69.0	71.6	74.0	77.2
Smoke marijuana regularly	71.9	69.5	65.5	67.5	69.2	74.6	77.4	80.6	82.5	84.7	85.5	86.6	89.2	89.3	89.8
Try LSD once or twice	82.8	84.6	83.9	85.4	86.6	87.3	86.4	88.8	89.1	88.9	89.5	89.2	91.6	89.8	89.7
Take LSD regularly	94.1	95.3	95.8	96.4	96.9	96.7	96.8	96.7	97.0	96.8	97.0	96.6	97.8	96.4	96.4
Try MDMA (Ecstasy) once or twice	—	—	—	—	—	—	—	—	—	—	—	—	—	—	—
Try cocaine once or twice	81.3	82.4	79.1	77.0	74.7	76.3	74.6	76.6	77.0	79.7	79.3	80.2	87.3	89.1	90.5
Take cocaine regularly	93.3	93.9	92.1	91.9	90.8	91.1	90.7	91.5	93.2	94.5	93.8	94.3	96.7	96.2	96.4
Try crack once or twice	—	—	—	—	—	—	—	—	—	—	—	—	—	—	—
Take crack occasionally	—	—	—	—	—	—	—	—	—	—	—	—	—	—	—
Take crack regularly	—	—	—	—	—	—	—	—	—	—	—	—	—	—	—
Try cocaine powder once or twice	—	—	—	—	—	—	—	—	—	—	—	—	—	—	—
Take cocaine powder occasionally	—	—	—	—	—	—	—	—	—	—	—	—	—	—	—
Take cocaine powder regularly	—	—	—	—	—	—	—	—	—	—	—	—	—	—	—
Try heroin once or twice	91.5	92.6	92.5	92.0	93.4	93.5	93.5	94.6	94.3	94.0	94.0	93.3	96.2	95.0	95.4
Take heroin occasionally	94.8	96.0	96.0	96.4	96.8	96.7	97.2	96.9	96.9	97.1	96.8	96.6	97.9	96.9	97.2
Take heroin regularly	96.7	97.5	97.2	97.8	97.9	97.6	97.8	97.5	97.7	98.0	97.6	97.6	98.1	97.2	97.4
Try heroin once or twice without using a needle	—	—	—	—	—	—	—	—	—	—	—	—	—	—	—
Take heroin occasionally without using a needle	—	—	—	—	—	—	—	—	—	—	—	—	—	—	—
Try amphetamines once or twice	74.8	75.1	74.2	74.8	75.1	75.4	71.1	72.6	72.3	72.8	74.9	76.5	80.7	82.5	83.3
Take amphetamines regularly	92.1	92.8	92.5	93.5	94.4	93.0	91.7	92.0	92.6	93.6	93.3	93.5	95.4	94.2	94.2
Try barbiturates once or twice	77.7	81.3	81.1	82.4	84.0	83.9	82.4	84.4	83.1	84.1	84.9	86.8	89.6	89.4	89.3
Take barbiturates regularly	93.3	93.6	93.0	94.3	95.2	95.4	94.2	94.4	95.1	95.1	95.5	94.9	96.4	95.3	95.3
Try one or two drinks of an alcoholic beverage (beer, wine, liquor)	21.6	18.2	15.6	15.6	15.8	16.0	17.2	18.2	18.4	17.4	20.3	20.9	21.4	22.6	27.3
Take one or two drinks nearly every day	67.6	68.9	66.8	67.7	68.3	69.0	69.1	69.9	68.9	72.9	70.9	72.8	74.2	75.0	76.5
Take four or five drinks nearly every day	88.7	90.7	88.4	90.2	91.7	90.8	91.8	90.9	90.0	91.0	92.0	91.4	92.2	92.8	91.6
Have five or more drinks once or twice each weekend	60.3	58.6	57.4	56.2	56.7	55.6	55.5	58.8	56.6	59.6	60.4	62.4	62.0	65.3	66.5
Smoke one or more packs of cigarettes per day	67.5	65.9	66.4	67.0	70.3	70.8	69.9	69.4	70.8	73.0	72.3	75.4	74.3	73.1	72.4
Take steroids	—	—	—	—	—	—	—	—	—	—	—	—	—	—	—
	Approx. N = 2677 2957 3085 3686 3221 3261 3610 3651 3341 3254 3265 3113 3302 3311 2799														



^aThe 1975 question asked about people who are "20 or older."

^bAnswer alternatives were: (1) Don't disapprove, (2) Disapprove, and (3) Strongly disapprove. Percentages are shown for categories (2) and (3) combined.

(Table continued on next page)

TABLE 11 (cont.)

Long-Term Trends in Disapproval of Drug Use by Twelfth Graders

Do you disapprove of people (who are 18 or older) doing each of the following? ^a	Percentage "disapproving" ^b														'01-'02 change
	12th Grade														
	Class of 1990	Class of 1991	Class of 1992	Class of 1993	Class of 1994	Class of 1995	Class of 1996	Class of 1997	Class of 1998	Class of 1999	Class of 2000	Class of 2001	Class of 2002		
Try marijuana once or twice	67.8	68.7	69.9	63.3	57.6	56.7	52.5	51.0	51.6	48.8	52.5	49.1	51.6	+2.5	
Smoke marijuana occasionally	80.5	79.4	79.7	75.5	68.9	66.7	62.9	63.2	64.4	62.5	65.8	63.2	63.4	+0.2	
Smoke marijuana regularly	91.0	89.3	90.1	87.6	82.3	81.9	80.0	78.8	81.2	78.6	79.7	79.3	78.3	-1.0	
Try LSD once or twice	89.8	90.1	88.1	85.9	82.5	81.1	79.6	80.5	82.1	83.0	82.4	81.8	84.6	+2.8s	
Take LSD regularly	96.3	96.4	95.5	95.8	94.3	92.5	93.2	92.9	93.5	94.3	94.2	94.0	94.0	0.0	
Try MDMA (Ecstasy) once or twice	—	—	—	—	—	—	—	82.2	82.5	82.1	81.0	79.5	83.6	+4.1ss	
Try cocaine once or twice	91.5	93.6	93.0	92.7	91.6	90.3	90.0	88.0	89.5	89.1	88.2	88.1	89.0	+0.9	
Take cocaine regularly	96.7	97.3	96.9	97.5	96.6	96.1	95.6	96.0	95.6	94.9	95.5	94.9	95.0	0.0	
Try crack once or twice	92.3	92.1	93.1	89.9	89.5	91.4	87.4	87.0	86.7	87.6	87.5	87.0	87.8	+0.8	
Take crack occasionally	94.3	94.2	95.0	92.8	92.8	94.0	91.2	91.3	90.9	92.3	91.9	91.6	91.5	-0.1	
Take crack regularly	94.9	95.0	95.5	93.4	93.1	94.1	93.0	92.3	91.9	93.2	92.8	92.2	92.4	+0.1	
Try cocaine powder once or twice	87.9	88.0	89.4	86.6	87.1	88.3	83.1	83.0	83.1	84.3	84.1	83.3	83.8	+0.6	
Take cocaine powder occasionally	92.1	93.0	93.4	91.2	91.0	92.7	89.7	89.3	88.7	90.0	90.3	89.8	90.2	+0.4	
Take cocaine powder regularly	93.7	94.4	94.3	93.0	92.5	93.8	92.9	91.5	91.1	92.3	92.6	92.5	92.2	-0.4	
Try heroin once or twice	95.1	96.0	94.9	94.4	93.2	92.8	92.1	92.3	93.7	93.5	93.0	93.1	94.1	+1.1	
Take heroin occasionally	96.7	97.3	96.8	97.0	96.2	95.7	95.0	95.4	96.1	95.7	96.0	95.4	95.6	+0.2	
Take heroin regularly	97.5	97.8	97.2	97.5	97.1	96.4	96.3	96.4	96.6	96.4	96.6	96.2	96.2	0.0	
Try heroin once or twice without using a needle	—	—	—	—	—	92.9	90.8	92.3	93.0	92.6	94.0	91.7	93.1	+1.4	
Take heroin occasionally without using a needle	—	—	—	—	—	94.7	93.2	94.4	94.3	93.8	95.2	93.5	94.4	+0.9	
Try amphetamines once or twice	85.3	86.5	86.9	84.2	81.3	82.2	79.9	81.3	82.5	81.9	82.1	82.3	83.8	+1.5	
Take amphetamines regularly	95.5	96.0	95.6	96.0	94.1	94.3	93.5	94.3	94.0	93.7	94.1	93.4	93.5	+0.2	
Try barbiturates once or twice	90.5	90.6	90.3	89.7	87.5	87.3	84.9	86.4	86.0	86.6	85.9	85.9	86.6	+0.7	
Take barbiturates regularly	96.4	97.1	96.5	97.0	96.1	95.2	94.8	95.3	94.6	94.7	95.2	94.5	94.7	+0.2	
Try one or two drinks of an alcoholic beverage (beer, wine, liquor)	29.4	29.8	33.0	30.1	28.4	27.3	26.5	26.1	24.5	24.6	25.2	26.6	26.3	-0.3	
Take one or two drinks nearly every day	77.9	76.5	75.9	77.8	73.1	73.3	70.8	70.0	69.4	67.2	70.0	69.2	69.1	0.0	
Take four or five drinks nearly every day	91.9	90.6	90.8	90.6	89.8	88.8	89.4	88.6	86.7	86.9	88.4	86.4	87.5	+1.1	
Have five or more drinks once or twice each weekend	68.9	67.4	70.7	70.1	65.1	66.7	64.7	65.0	63.8	62.7	65.2	62.9	64.7	+1.8	
Smoke one or more packs of cigarettes per day	72.8	71.4	73.5	70.6	69.8	68.2	67.2	67.1	68.8	69.5	70.1	71.6	73.6	+2.0	
Take steroids	90.8	90.5	92.1	92.1	91.9	91.0	91.7	91.4	90.8	88.9	88.8	86.4	86.8	+0.4	

Approx. N = 2566 2547 2645 2723 2588 2603 2399 2601 2545 2310 2150 2144 2160

NOTES: Level of significance of difference between the two most recent classes: s = .05, ss = .01, sss = .001. '—' indicates data not available. Any apparent inconsistency between the change estimate and the prevalence of use estimates for the two most recent classes is due to rounding error.

SOURCE: The Monitoring the Future Study, the University of Michigan.

TABLE 12
Trends in Perceived Availability of Drugs by Eighth and Tenth Graders, 1992–2002

How difficult do you think it would be for you to get each of the following types of drugs, if you wanted some?	Percentage saying "fairly easy" or "very easy" to get ^a																							
	8th Grade											10th Grade												
	1992	1993	1994	1995	1996	1997	1998	1999	2000	2001	2002	'01-'02 change	1992	1993	1994	1995	1996	1997	1998	1999	2000	2001	2002	'01-'02 change
Marijuana	42.3	43.8	49.9	52.4	54.8	54.2	50.6	48.4	47.0	48.1	46.6	-1.4	65.2	68.4	75.0	78.1	81.1	80.5	77.9	78.2	77.7	77.4	75.9	-1.5
LSD	21.5	21.8	21.8	23.5	23.6	22.7	19.3	18.3	17.0	17.6	15.2	-2.4 _{ss}	33.6	35.8	36.1	39.8	41.0	38.3	34.0	34.3	32.9	31.2	26.8	-4.4 _{sss}
PCP ^b	18.0	18.5	17.7	19.0	19.6	19.2	17.5	17.1	16.0	15.4	14.1	-1.4	23.7	23.4	23.8	24.7	26.8	24.8	23.9	24.5	25.0	21.6	20.8	-0.8
MDMA (Ecstasy) ^b	—	—	—	—	—	—	—	—	—	23.8	22.8	-1.0	—	—	—	—	—	—	—	—	—	41.4	41.0	-0.4
Crack	25.6	25.9	26.9	28.7	27.9	27.5	26.5	25.9	24.9	24.4	23.7	-0.7	33.7	33.0	34.2	34.6	36.4	36.0	36.3	36.5	34.0	30.6	31.3	+0.7
Cocaine powder	25.7	25.9	26.4	27.8	27.2	26.9	25.7	25.0	23.9	23.9	22.5	-1.5	35.0	34.1	34.5	35.3	36.9	37.1	36.8	36.7	34.5	31.0	31.8	+0.9
Heroin	19.7	19.8	19.4	21.1	20.6	19.8	18.0	17.5	16.5	16.9	16.0	-0.9	24.3	24.3	24.7	24.6	24.8	24.4	23.0	23.7	22.3	20.1	19.9	-0.3
Other narcotics ^b	19.8	19.0	18.3	20.3	20.0	20.6	17.1	16.2	15.6	15.0	14.7	-0.3	26.9	24.9	26.9	27.8	29.4	29.0	26.1	26.6	27.2	25.8	25.4	-0.4
Amphetamines	32.2	31.4	31.0	33.4	32.6	30.6	27.3	25.9	25.5	26.2	24.4	-1.8 _s	43.4	46.4	46.6	47.7	47.2	44.6	41.0	41.3	40.9	40.6	39.6	-1.0
Crystal meth. (ice) ^b	16.0	15.1	14.1	16.0	16.3	15.7	16.0	14.7	14.9	13.9	13.3	-0.6	18.8	16.4	17.8	20.7	22.6	22.9	22.1	21.8	22.8	19.9	20.5	+0.6
Barbiturates	27.4	26.1	25.3	26.5	25.6	24.4	21.1	20.8	19.7	20.7	19.4	-1.2	38.0	38.8	38.3	38.8	38.1	35.6	32.7	33.2	32.4	32.8	32.4	-0.4
Tranquilizers	22.9	21.4	20.4	21.3	20.4	19.6	18.1	17.3	16.2	17.8	16.9	-0.9	31.6	30.5	29.8	30.6	30.3	28.7	26.5	26.8	27.6	28.5	28.3	-0.2
Alcohol	76.2	73.9	74.5	74.9	75.3	74.9	73.1	72.3	70.6	70.6	67.9	-2.8 _{sss}	88.6	88.9	89.8	89.7	90.4	89.0	88.0	88.2	87.7	87.7	84.8	-2.9 _{sss}
Cigarettes	77.8	75.5	76.1	76.4	76.9	76.0	73.6	71.5	68.7	67.7	64.3	-3.5 _{sss}	89.1	89.4	90.3	90.7	91.3	89.6	88.1	88.3	86.8	86.3	83.3	-3.1 _{sss}
Steroids	24.0	22.7	23.1	23.8	24.1	23.6	22.3	22.6	22.3	23.1	22.0	-1.2	37.6	33.6	33.6	34.8	34.8	34.2	33.0	35.9	35.4	33.1	33.2	0.0
	Approx. N = 8355 16775 16119 15496 16318 16482 16208 15397 15180 14804 13972											7014 14652 15192 16209 14887 14856 14423 13112 13690 13518 13694												

NOTES: Level of significance of difference between the two most recent classes: s = .05, ss = .01, sss = .001. '—' indicates data not available.
 Any apparent inconsistency between the change estimate and the prevalence of use estimates for the two most recent classes is due to rounding error.
 SOURCE: The Monitoring the Future Study, the University of Michigan.

^aAnswer alternatives were: (1) Probably impossible, (2) Very difficult, (3) Fairly difficult, (4) Fairly easy, (5) Very easy, and (6) Can't say, drug unfamiliar.
^bBeginning in 1993, data based on half of forms; N is one-half of N indicated.

TABLE 13
Long-Term Trends in Perceived Availability of Drugs by Twelfth Graders

How difficult do you think it would be for you to get each of the following types of drugs, if you wanted some?	Percentage saying "fairly easy" or "very easy" to get ^a																											'01-'02 change				
	1975	1976	1977	1978	1979	1980	1981	1982	1983	1984	1985	1986	1987	1988	1989	1990	1991	1992	1993	1994	1995	1996	1997	1998	1999	2000	2001		2002			
Marijuana	87.8	87.4	87.9	87.8	90.1	89.0	89.2	88.5	86.2	84.6	85.5	85.2	84.8	85.0	84.3	84.4	83.3	82.7	83.0	85.5	88.5	88.7	89.6	90.4	88.9	88.5	88.5	87.2	-1.3			
Amyl/butyl nitrites	—	—	—	—	—	—	—	—	—	—	—	—	23.9	25.9	26.8	24.4	22.7	25.9	25.9	26.7	26.0	23.9	23.8	25.1	21.4	23.3	22.5	22.3	-0.2			
LSD	46.2	37.4	34.5	32.2	34.2	35.3	35.0	34.2	30.9	30.6	30.5	28.5	31.4	33.3	38.3	40.7	39.5	44.5	49.2	50.8	53.8	51.3	50.7	48.8	44.7	46.9	44.7	39.6	-5.1			
Some other psychedelic/hallucinogen ^b	47.8	35.7	33.8	33.8	34.6	35.0	32.7	30.6	26.6	26.6	26.1	24.9	25.0	26.2	28.2	28.3	28.0	29.9	33.5	33.8	35.8	33.9	33.9	35.1	29.5	34.5	48.5	47.7	-0.8			
PCP	—	—	—	—	—	—	—	—	—	—	—	—	22.8	24.9	28.9	27.7	27.6	31.7	31.7	31.4	31.0	30.5	30.0	30.7	26.7	28.8	27.2	25.8	-1.4			
MDMA (Ecstasy)	—	—	—	—	—	—	—	—	—	—	—	—	—	—	21.7	22.0	22.1	24.2	28.1	31.2	34.2	36.9	38.8	38.2	40.1	51.4	61.5	59.1	-2.4			
Cocaine	37.0	34.0	33.0	37.8	45.5	47.9	47.5	47.4	43.1	45.0	48.9	51.5	54.2	55.0	58.7	54.5	51.0	52.7	48.5	46.6	47.7	48.1	48.5	51.3	47.6	47.8	46.2	44.6	-1.6			
Crack	—	—	—	—	—	—	—	—	—	—	—	—	41.1	42.1	47.0	42.4	39.9	43.5	43.6	40.5	41.9	40.7	40.6	43.8	41.1	42.6	40.2	38.5	-1.7			
Cocaine powder	—	—	—	—	—	—	—	—	—	—	—	—	52.9	50.3	53.7	49.0	46.0	48.0	45.4	43.7	43.8	44.4	43.3	45.7	43.7	44.6	40.7	40.2	-0.5			
Heroin	24.2	18.4	17.9	16.4	18.9	21.2	19.2	20.8	19.3	19.9	21.0	22.0	23.7	28.0	31.4	31.9	30.6	34.9	33.7	34.1	35.1	32.2	33.8	35.6	32.1	33.5	32.3	29.0	-3.3			
Some other narcotic (including methadone)	34.5	26.9	27.8	26.1	28.7	29.4	29.6	30.4	30.0	32.1	33.1	32.2	33.0	35.8	38.3	38.1	34.6	37.1	37.5	38.0	39.8	40.0	38.9	42.8	40.8	43.9	40.5	44.0	+3.5			
Amphetamines	67.8	61.8	58.1	58.5	59.9	61.3	69.5	70.8	68.5	68.2	66.4	64.3	64.5	63.9	64.3	59.7	57.3	58.8	61.5	62.0	62.8	59.4	59.8	60.8	58.1	57.1	57.1	57.4	+0.3			
Crystal meth. (ice)	—	—	—	—	—	—	—	—	—	—	—	—	—	—	—	24.1	24.3	26.0	26.6	25.6	27.0	26.9	27.6	29.8	27.6	27.8	28.3	28.3	0.0			
Barbiturates	60.0	54.4	52.4	50.6	49.8	49.1	54.9	55.2	52.5	51.9	51.3	48.3	48.2	47.8	48.4	45.9	42.4	44.0	44.5	43.3	42.3	41.4	40.0	40.7	37.9	37.4	35.7	36.6	+0.9			
Tranquilizers	71.8	65.5	64.9	64.3	61.4	59.1	60.8	58.9	55.3	54.5	54.7	51.2	48.6	49.1	45.3	44.7	40.8	40.9	41.1	39.2	37.8	36.0	35.4	36.2	32.7	33.8	33.1	32.9	-0.2			
Alcohol	—	—	—	—	—	—	—	—	—	—	—	—	—	—	—	—	—	—	—	—	—	—	—	—	—	—	—	95.0	94.8	94.3	94.7	+0.4
Steroids	—	—	—	—	—	—	—	—	—	—	—	—	—	—	—	—	—	46.7	46.8	44.8	42.9	45.5	40.3	41.7	44.5	44.6	44.8	44.4	45.5	+1.1		

Approx. N = 2627 2865 3065 3598 3172 3240 3578 3602 3385 3269 3274 3077 3271 3231 2806 2549 2476 2586 2670 2526 2552 2340 2517 2520 2215 2095 2120 2138

NOTES: Level of significance of difference between the two most recent classes: s = .05, ss = .01, sss = .001. '—' indicates data not available.

† indicates some change in the question. See relevant footnote.

Any apparent inconsistency between the change estimate and the prevalence of use estimates for the two most recent classes is due to rounding error.

^aAnswer alternatives were: (1) Probably impossible, (2) Very difficult, (3) Fairly difficult, (4) Fairly easy, and (5) Very easy.

^bIn 2001 the question text was changed from "other psychedelics" to "other hallucinogens" and "shrooms" was added to the list of examples. These changes likely explain the discontinuity in the 2001 results.

SOURCE: The Monitoring the Future Study, the University of Michigan.

FIGURE 1
Trends in Annual Prevalence of an Illicit Drug Use Index
Eighth, Tenth, and Twelfth Graders

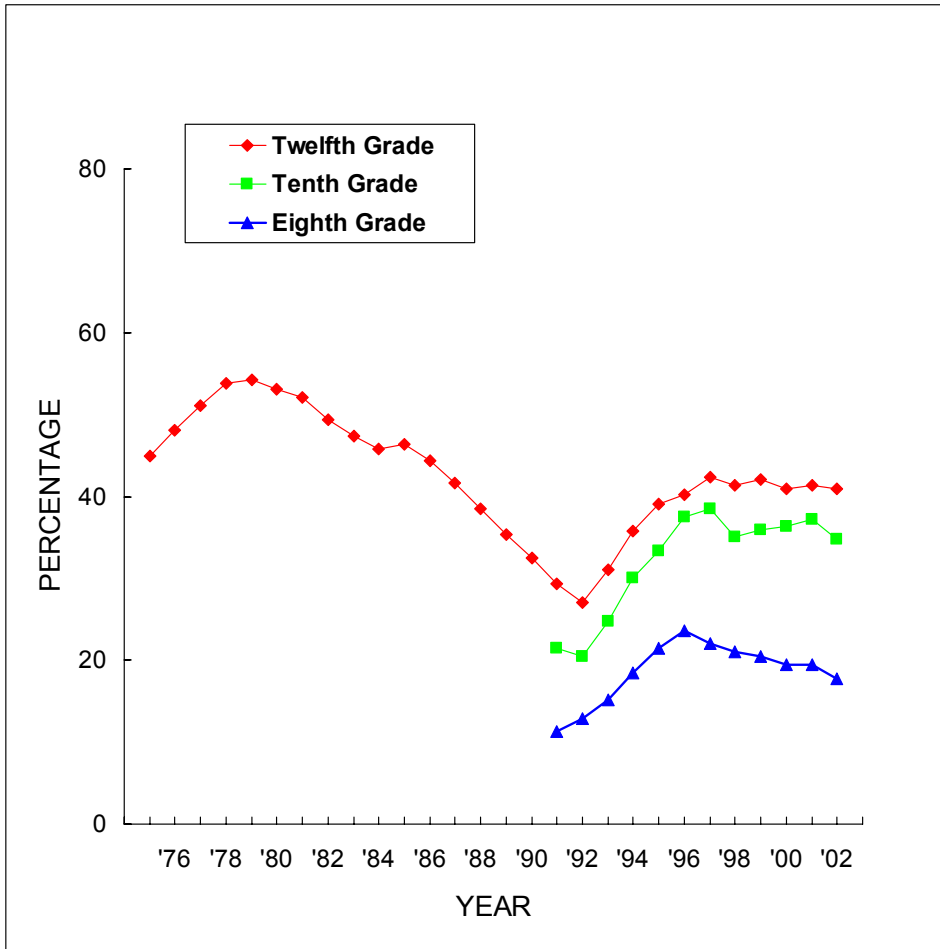


FIGURE 2
Marijuana: Trends in Annual Use, Risk, Disapproval, and Availability
 Eighth, Tenth, and Twelfth Graders

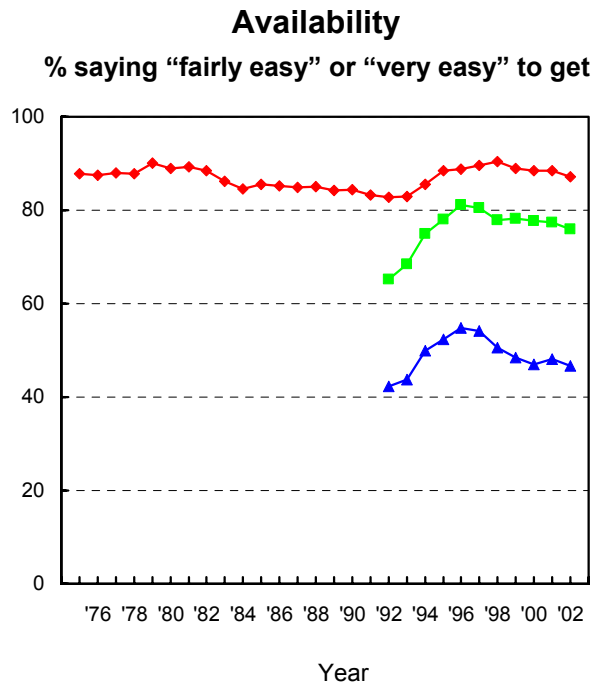
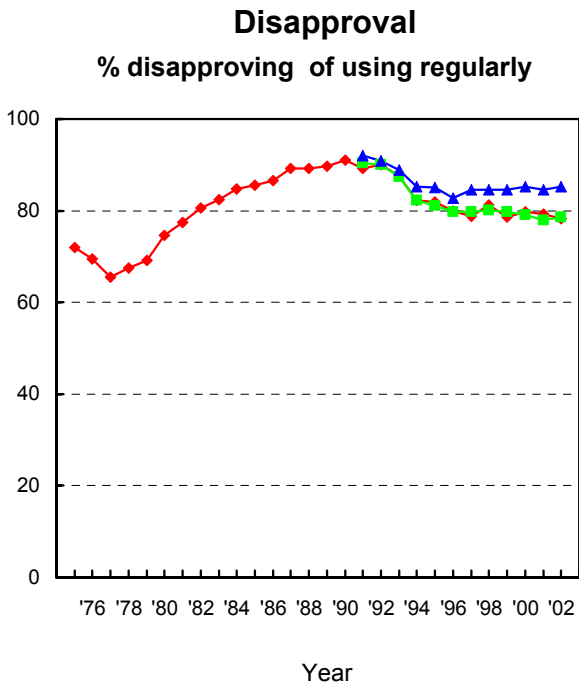
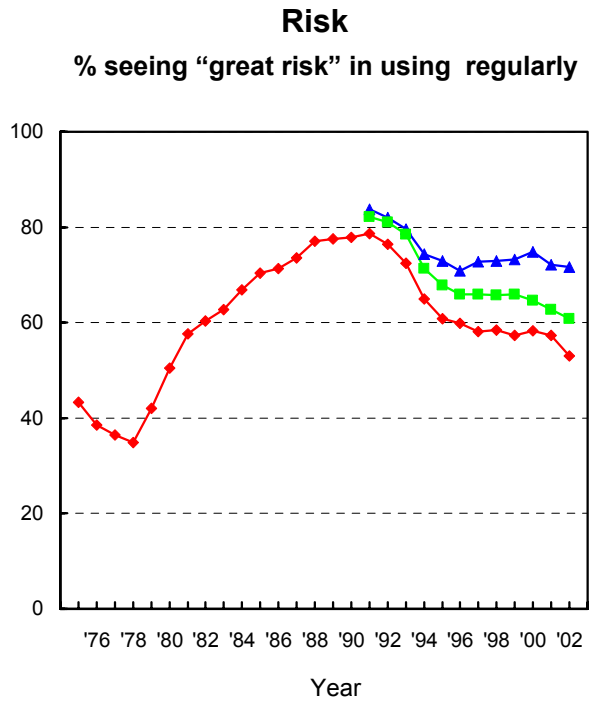
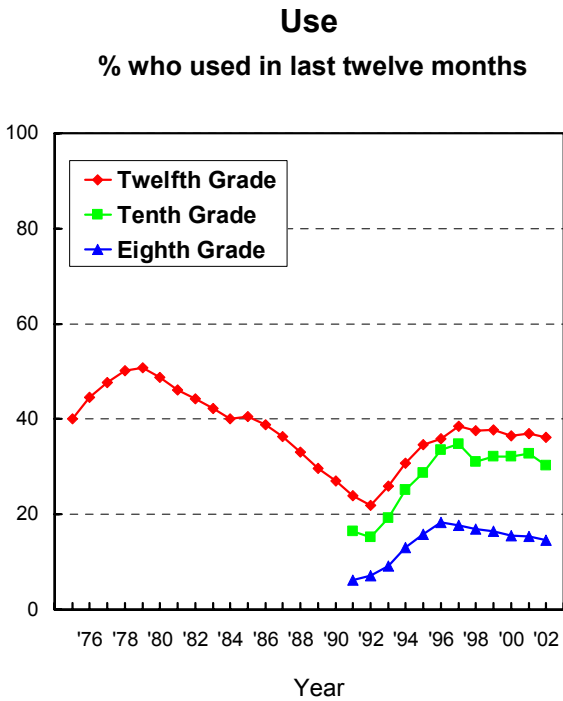
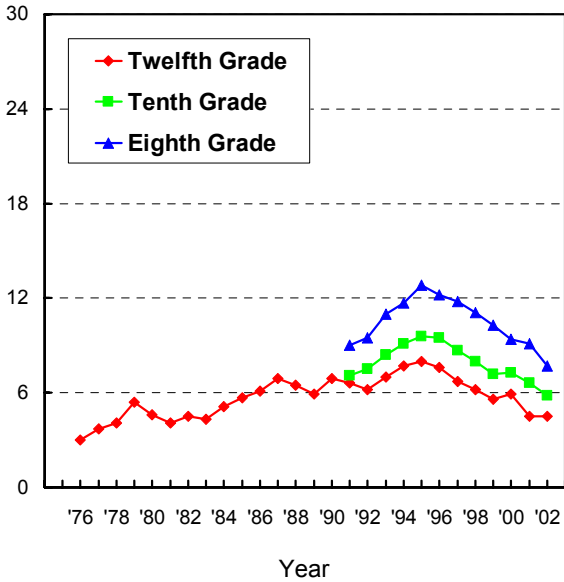


FIGURE 3
Inhalants: Trends in Annual Use, Risk, and Disapproval
 Eighth, Tenth, and Twelfth Graders

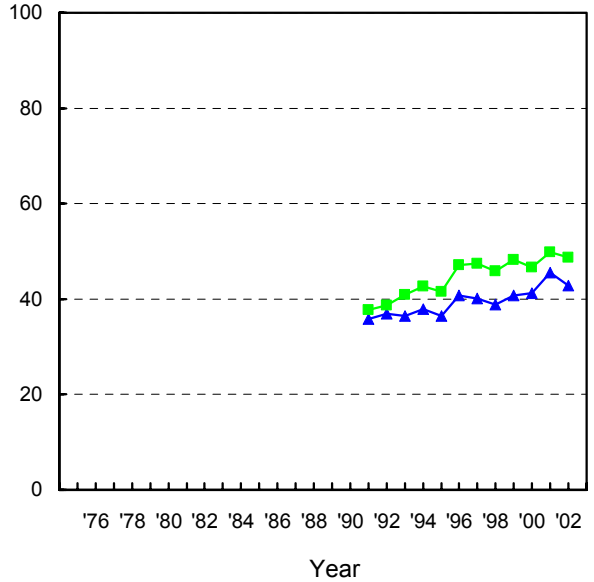
Use

% who used in last twelve months



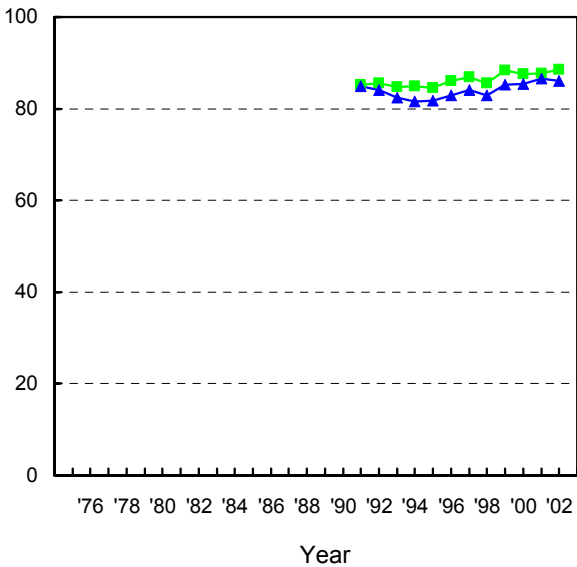
Risk

% seeing "great risk" in using once or twice



Disapproval

% disapproving of using once or twice



Availability

% saying "fairly easy" or "very easy" to get

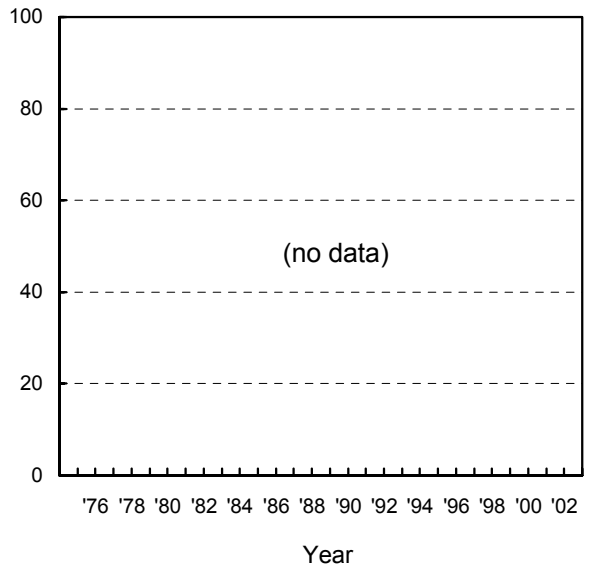
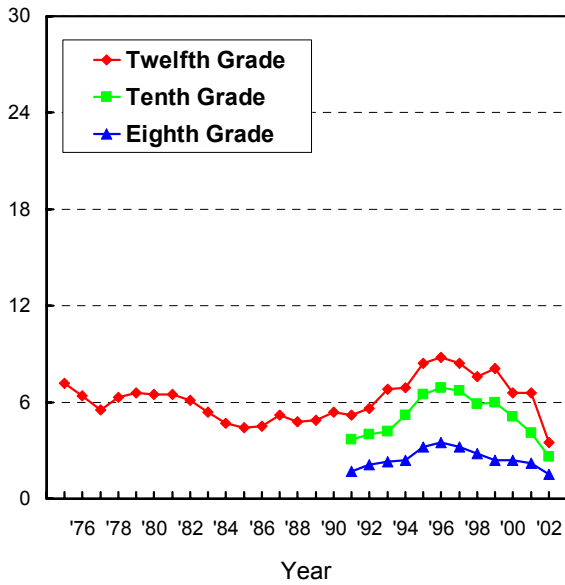
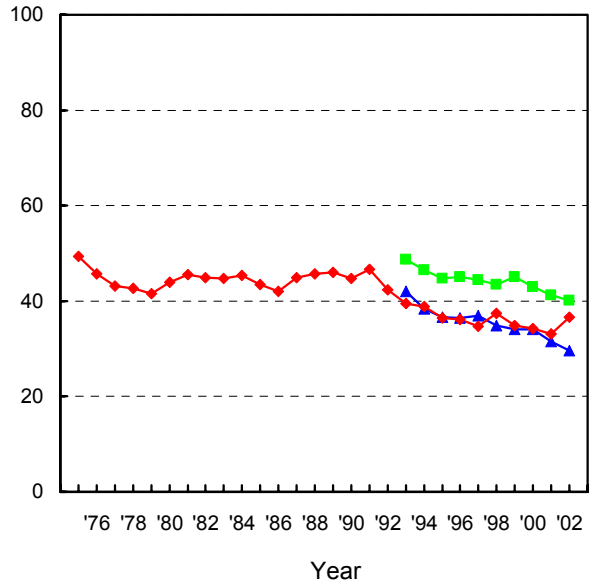


FIGURE 4
LSD: Trends in Annual Use, Risk, Disapproval, and Availability
 Eighth, Tenth, and Twelfth Graders

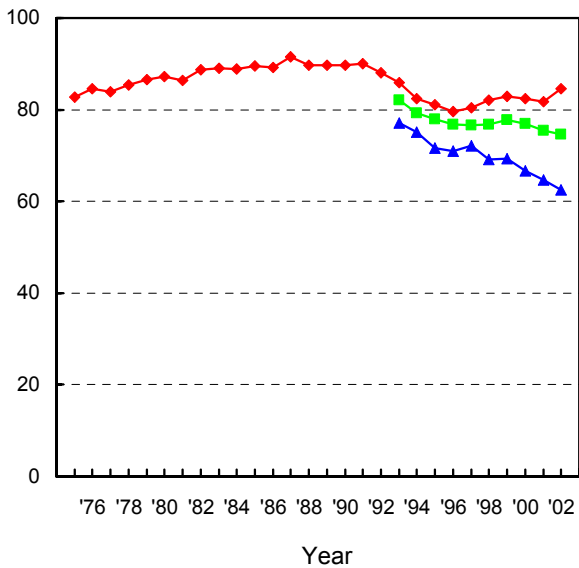
Use
 % who used in past year



Risk
 % seeing "great risk" in using once or twice



Disapproval
 % disapproving of using once or twice



Availability
 % saying "fairly easy" or "very easy" to get

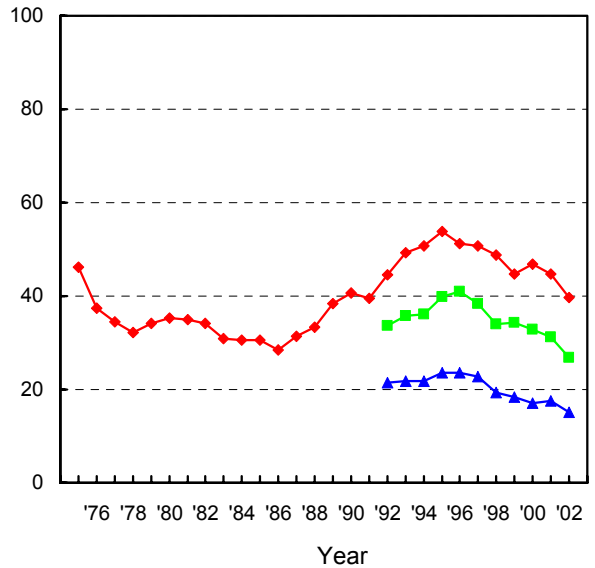


FIGURE 5
MDMA (Ecstasy): Trends in Annual Use, Risk, Disapproval, and Availability
 Eighth, Tenth, and Twelfth Graders

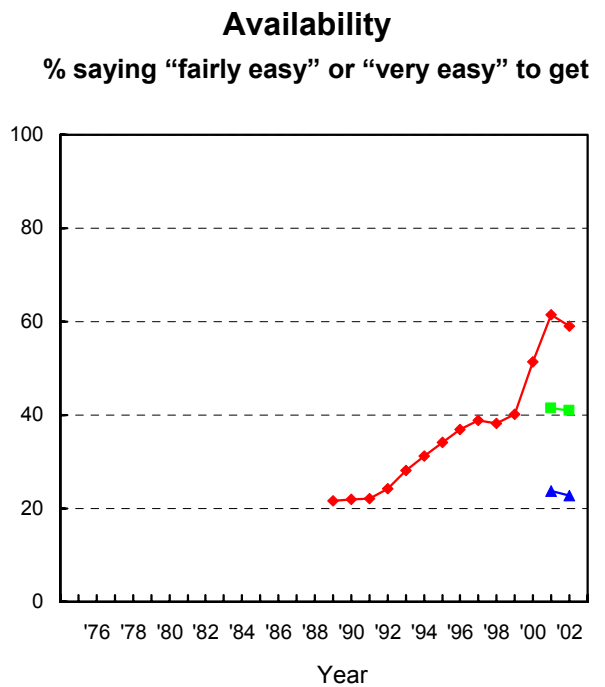
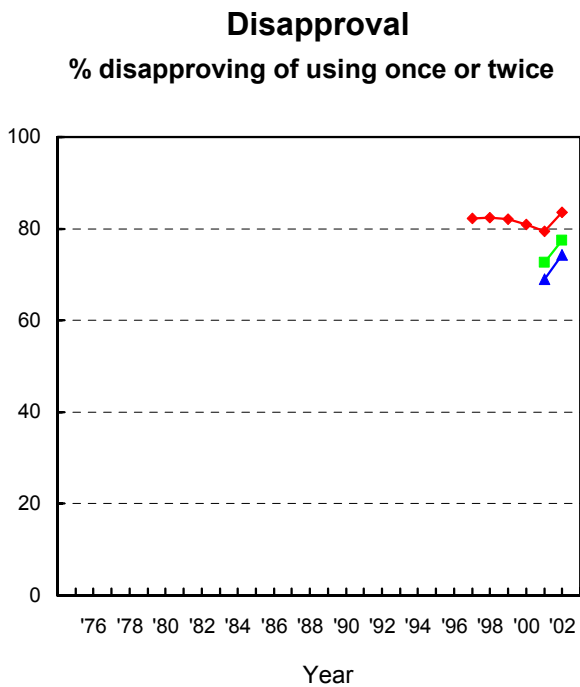
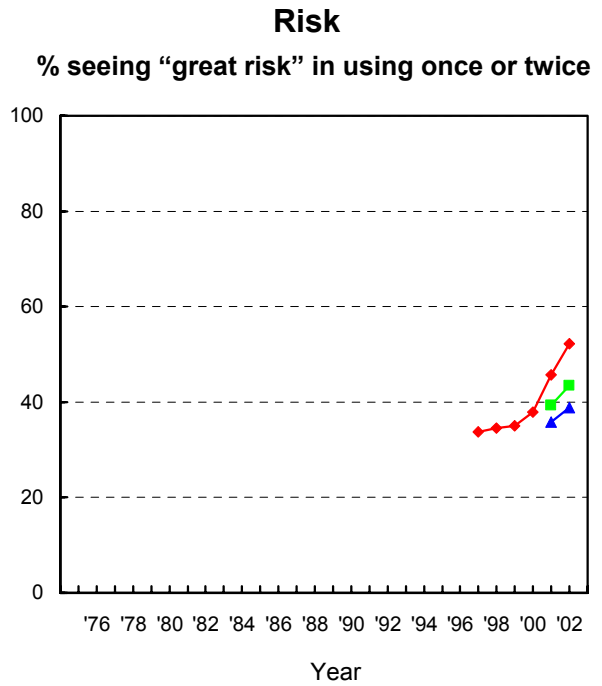
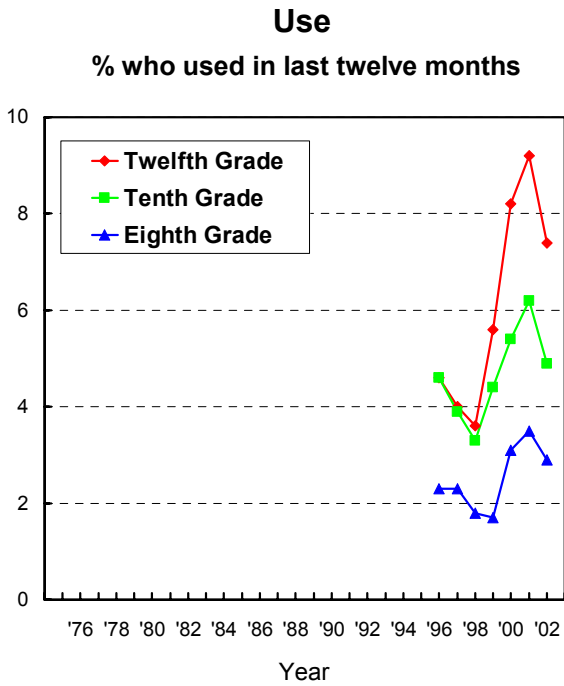
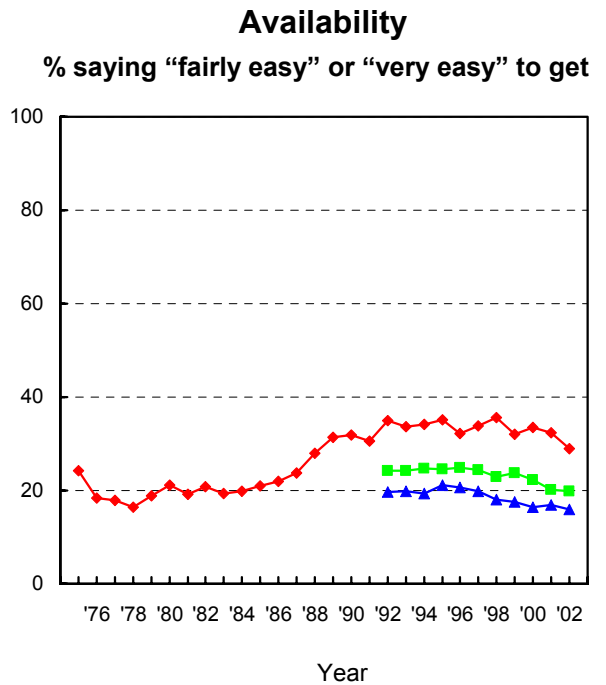
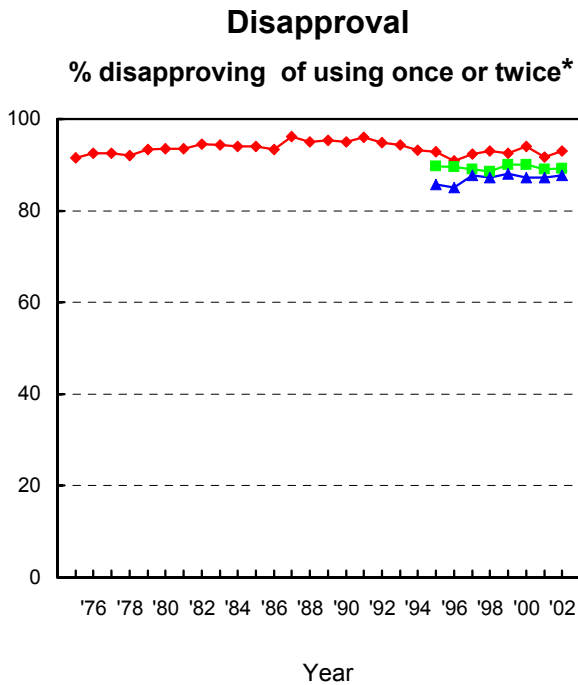
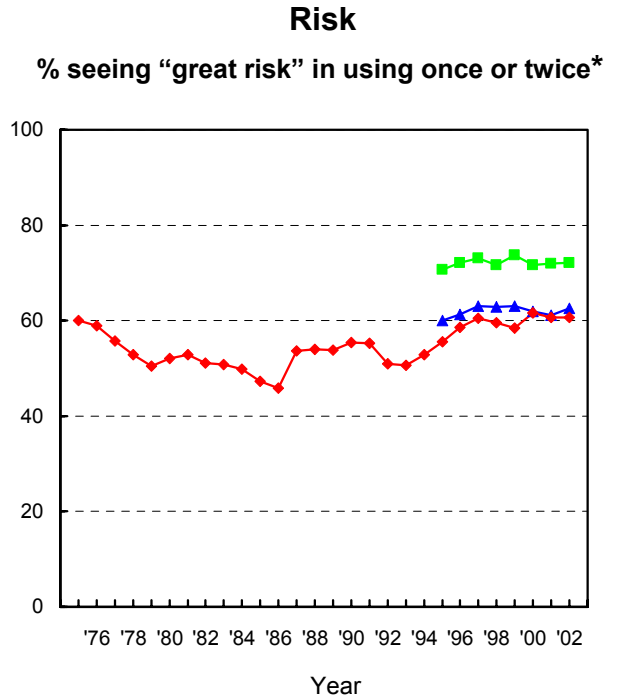
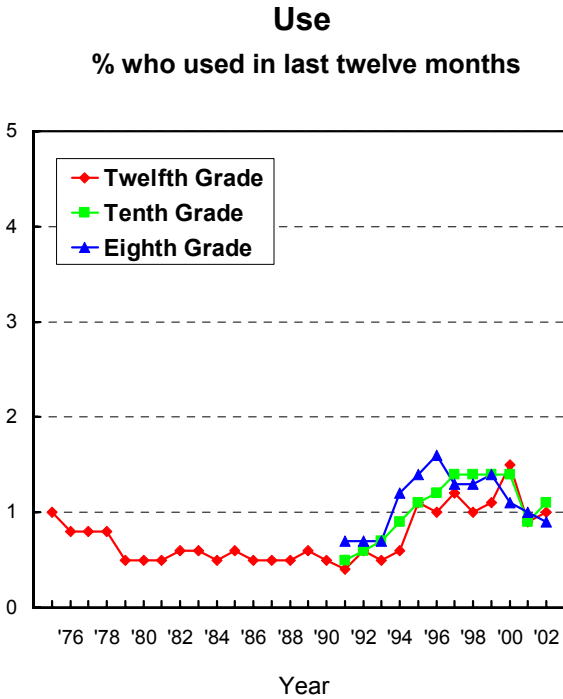


FIGURE 6
Heroin: Trends in Annual Use, Risk, Disapproval, and Availability
 Eighth, Tenth, and Twelfth Graders



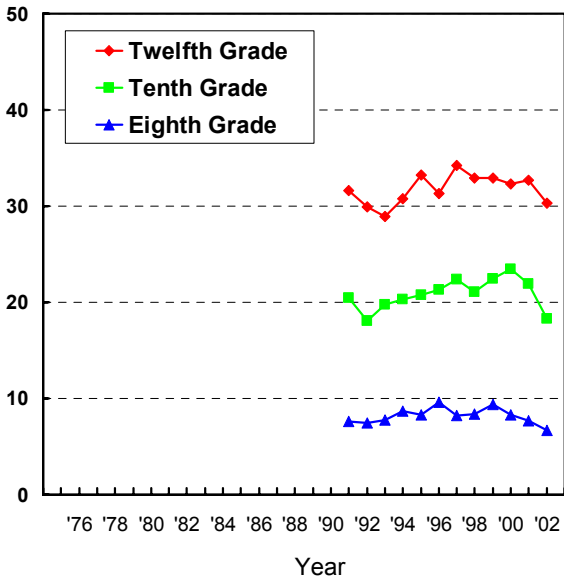
*Prior to 1995, the question asked about heroin use in general. Since 1995, the question has asked about heroin use without a needle.

FIGURE 7

Alcohol: Trends in Having Been Drunk, Risk, Disapproval, and Availability
Eighth, Tenth, and Twelfth Graders

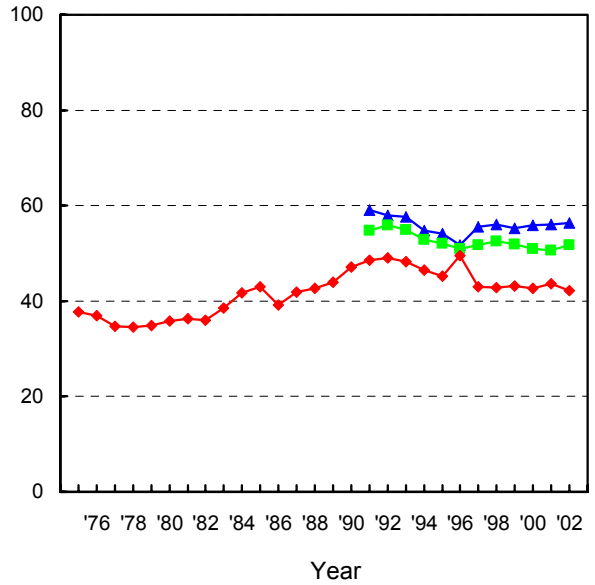
Use

% who report being drunk in the past 30-days



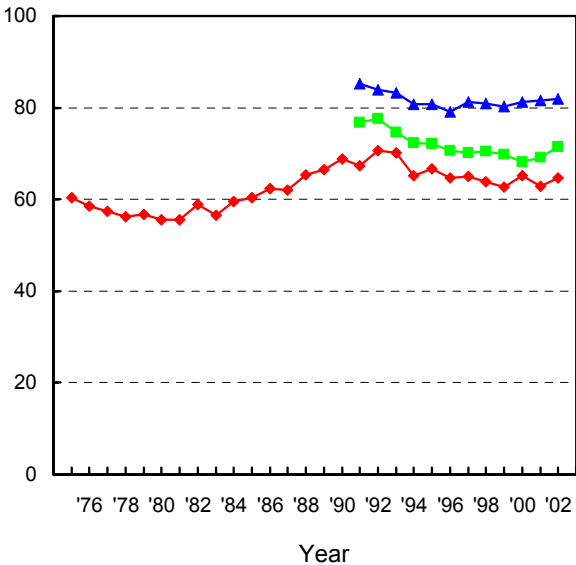
Risk

% seeing "great risk" in having 5+ drinks in a row once or twice each weekend



Disapproval

% disapproving of having 5+ drinks in a row once or twice each weekend



Availability

% saying "fairly easy" or "very easy" to get alcohol

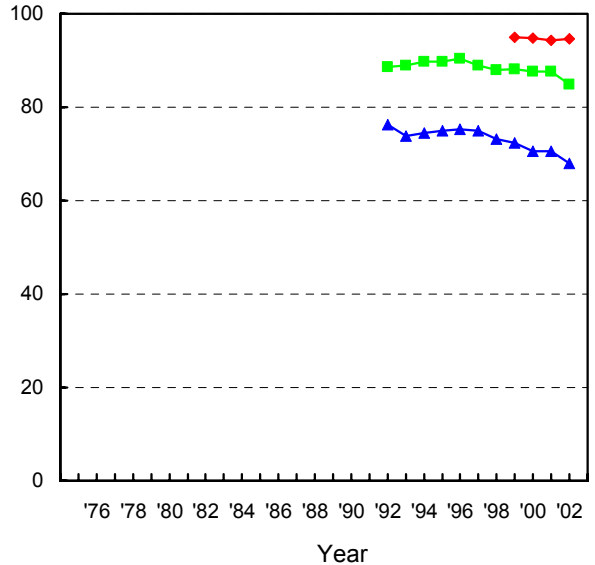
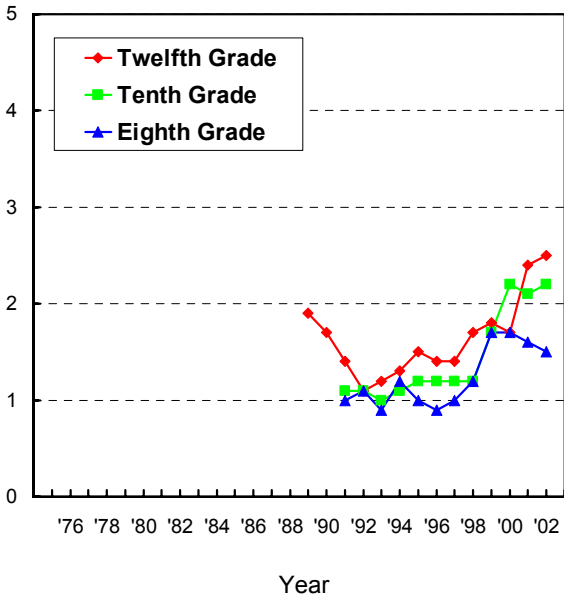


FIGURE 8
Steroids: Trends in Annual Use, Risk, Disapproval, and Availability
 Eighth, Tenth, and Twelfth Graders

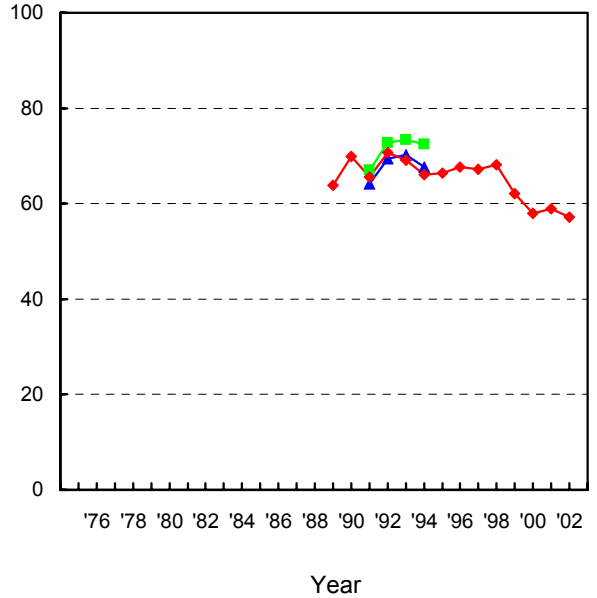
Use

% who used in last twelve months



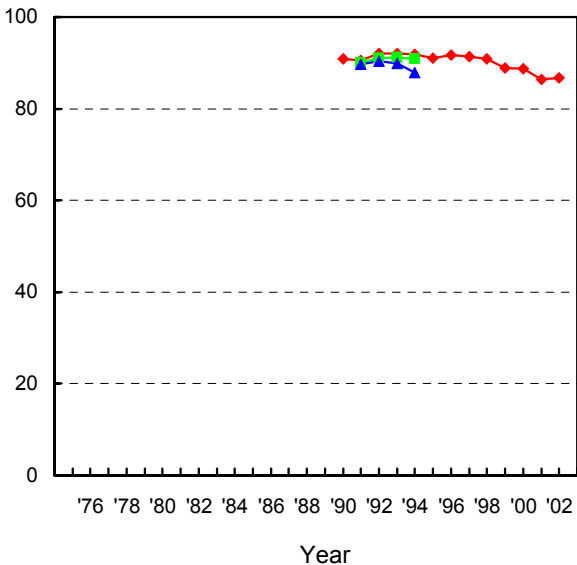
Risk

% seeing "great risk" in using once or twice



Disapproval

% disapproving of using once or twice



Availability

% saying "fairly easy" or "very easy" to get

