

December 21, 2006

Contacts: Joe Serwach, (734) 647-1844 or jserwach@umich.edu
Patti Meyer, (734) 647-1083 or mtfinfo@isr.umich.edu

Study Web site: www.monitoringthefuture.org

EMBARGOED FOR RELEASE AT 10 A.M. EST, THURSDAY, DEC. 21, 2006

EDITORS: Results of this year's Monitoring the Future survey are being released at a news conference to be held at the National Press Club in Washington, D.C. jointly by the University of Michigan, which designed and conducts the study, and the National Institute on Drug Abuse, which sponsors the study. Participating will be the director of the White House Office of National Drug Control Policy (ONDCP), John Walters; the United States Attorney General, Alberto Gonzales; the director of the National Institute on Drug Abuse (NIDA), Nora Volkow; and the principal investigator of the study, Lloyd Johnston. For further information, contact Johnston at (734) 763-5043.

Decline in daily smoking by younger teens has ended

ANN ARBOR, Mich.----Following a decade of substantial improvement, daily smoking among young people in their early and middle teens has stopped declining, according to the latest *Monitoring the Future* (MTF) survey.

MTF, which is now in its 32nd year, measures smoking, drinking, and illicit drug use among the nation's secondary school students, surveying about 50,000 eighth, tenth, and twelfth graders in over 400 secondary schools every year.

The study had previously been reporting a large and continuing decline in cigarette smoking in these populations since they reached their recent peak smoking rates in the mid-1990s; **current daily smoking** has fallen by half among 12th graders, and by more than half among those in 8th and 10th grades.

However, this year no further decline in daily smoking was observed at 8th or 10th grade. Further declines did occur at 12th grade; daily smoking fell a bit further from 13.6 percent in 2005 to 12.2 percent in 2006 (a not quite statistically significant drop). Their half-pack-a-day smoking fell from 6.9 percent to 5.9 percent (which was significant).

Although the proportion reporting *daily* smoking in the past month has stabilized in the lower grades this year, all grades showed at least a small continuing decline in the proportions of students reporting ***any past month smoking***. Rates for 8th graders were down from 9.3 percent in 2005 to 8.7 percent in 2006, for 10th graders from 14.9 percent to 14.5 percent, and for 12th graders from 23.2 percent to 21.6 percent. No one of these changes was large enough to be statistically significant, but the three in combination were.

The investigators note that even occasional smoking in senior year is important, because many of the light to moderate smokers transition into regular smoking in the years after high school. Like daily smoking, the statistics for monthly smoking are down by large proportions from the mid-1990s, when they reached a peak.

Monthly prevalence (the percent smoking at all in the past 30 days) is down by about 60 percent, 50 percent, and 40 percent in grades 8, 10, and 12, respectively. The 12th grade is currently showing the greatest declines, note the investigators, as the class cohorts of 8th and 10th graders who have previously shown large declines in their use move into 12th grade.

“Many fewer of today’s students have ever even tried smoking than was true a decade ago, when recent peak levels in lifetime prevalence were attained,” said University of Michigan researcher Lloyd Johnston, the principal investigator of the study. While 49 percent of the 8th graders in 1996 had tried cigarettes, “only” 25 percent of the 8th graders in 2006 indicated having done so.

Lifetime prevalence of ever smoking a cigarette is down by about half among 8th graders, 40 percent among 10th graders, and 30 percent among 12th graders since the recent peak year of 1996, or 1997 in the case of 12th graders.

“We expect the decline among 12th graders to continue as the younger, less tobacco-experienced class cohorts move into 12th grade,” Johnston added.

In addition to Johnston, the authors of the forthcoming report (referenced at the end of this release) include Patrick O’Malley, Jerald Bachman, and John Schulenberg—all research professors at the U-M Institute for Social Research and all social or developmental psychologists.

The investigators believe that some of the forces contributing to the substantial declines in smoking over the past decade have diminished, which likely explains the leveling in teen smoking that is now taking place.

The public debate that led up to the Tobacco Settlement between the major tobacco companies and the state attorneys general centered attention on the hazards of smoking and some of the questionable practices of the industry, all of which likely led to less favorable attitudes toward smoking.

In addition, there were several relevant changes as a direct result of the settlement: the tobacco companies raised cigarette prices considerably to permit the industry to cover the costs of the settlement, the Joe Camel campaign and all billboard advertising were both terminated, and the

American Legacy Foundation was created with settlement monies and launched a successful national anti-tobacco advertising campaign. Moreover, many states mounted their own ad campaigns and initiated other activities aimed at curbing smoking, in part with settlement monies.

Now, however, there is no heated public debate about the behavior of the industry: state anti-tobacco initiatives, including anti-smoking ad campaigns, have shrunk as settlement monies have been diverted by many states to other activities; the national ad campaign has diminished considerably as a result of time limitations in the settlement's funding of the American Legacy Foundation; and there are fewer states raising tobacco taxes and thus raising the price of cigarettes. The investigators believe that the substantial, and concurrent, diminution of these various forces helps to explain why youth smoking is no longer declining.

Attitudes and beliefs about smoking

“For some years we were seeing an increase in the proportions of young people who thought smoking was dangerous—what we have labeled ‘perceived risk’—but over the past two years perceived risk of cigarette use has held level among 10th graders and has begun to drop among 8th graders,” Johnston said. “Generally we have found perceived risk to be an important indicator of changes in future use of a drug, so this is not a favorable development. The good news is that disapproval of cigarette smoking is still rising and is at very high levels among teens.”

Certain other attitudes related to smoking have been included in MTF surveys over the years, and they show that negative attitudes about smoking and smokers grew from 1996 or 1997 through about 2004, before leveling.

Some have continued to increase, though, including “Smoking is a dirty habit” and “I think becoming a smoker reflects poor judgment.” The most widely endorsed of these attitudinal statements about smoking is “I prefer to date people who don’t smoke.” Some 80 percent of all 8th and 10th graders agree with this statement, while 77 percent of 12th graders now endorse it, and the percentage is still rising at 12th grade.

“Wanting to be attractive to the opposite sex should be a major motivation to avoid smoking for nearly all teens today,” Johnston said. “Clearly the social stigma attached to smoking has grown, and is now very high, even within their peer group.”

Availability of cigarettes

After 1996, the proportions of 8th and 10th graders who said that they could get cigarettes fairly easily began to decline; the decline continues today for the 8th graders and pretty much leveled off after 2003 among the 10th graders, though there was some further decline this year. (Twelfth graders are not asked this question.)

In sum, after a very important increase in the rate of smoking among the nation's teens in the early 1990s, there was a turnaround that began after 1996/1997—one that has now more than offset the increases in smoking observed in the early 1990s. However, this more recent period of decline in teen smoking appears to be nearing its end, except insofar as there are cohort effects

still emerging at 12th grade. In the lower grades, perceived risk has begun to decline, and the declines in use are now very small—indeed, they have ended for daily smoking.

Smokeless Tobacco

Like cigarettes, the 30-day prevalence of using *smokeless tobacco*, or “spit,” reached a recent peak level in the mid-1990s and then began to decline. All three grade levels have shown about a one-half decline in their 30-day prevalence since those peak levels, but the declines have ended at the lower grades, where use remained level this year. Only the 12th graders are showing further evidence of any decline in their use of smokeless tobacco, no doubt the result of a cohort effect working its way up the age scale. At present, the prevalence rates for any use in the prior 30 days are 3.7 percent, 5.7 percent, and 6.1 percent in grades 8, 10, and 12. That means that one in every sixteen high school seniors is a current user of smokeless tobacco.

“This is a bit deceptive though, because boys account for almost all smokeless tobacco use,” Johnston said. “Among 12th-grade males, one in nine is a current user.”

Bidis and Kreteks

In 2000, a single question was introduced into the study about the use of *bidis*—small flavored cigarettes imported from India—because of rising concern at the time about their growing use. In 2001, a single question was introduced for similar reasons about the use of *kreteks*—clove-flavored cigarettes imported from Indonesia.

Relatively low prevalence rates were observed for both types of specialty cigarettes in the initial years of measurement, and since then use has declined substantially and fairly steadily in all grades.

By 2006, the annual prevalence of bidi use was down by three quarters among 12th graders, from 9 percent in 2000 to 2 percent in 2006, including a statistically significant drop this year. Annual prevalence of kretek use among 12th graders is down by about 40 percent since 2001, including further decline this year.

Therefore, the investigators conclude that both bidis and kreteks constituted short-term fads that have not caught on with mainstream American youth, making it unlikely that they will become the health menace some had feared. The investigators note, however, that mainstream tobacco companies have themselves introduced flavored cigarettes, which may help to explain the demise of these fringe products.

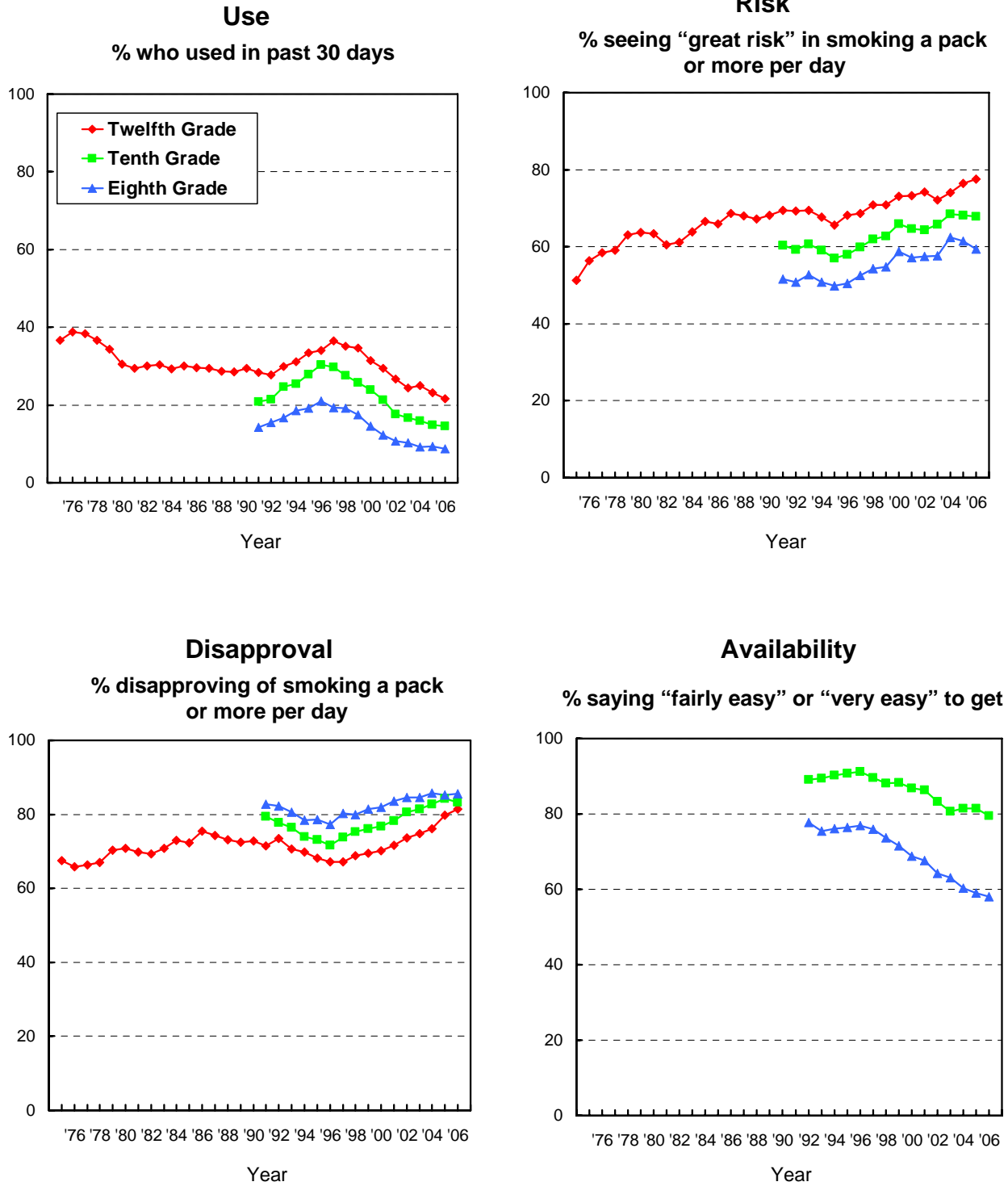
#

Monitoring the Future has been funded under a series of competing, investigator-initiated research grants from the National Institute on Drug Abuse, part of the National Institutes of Health. Surveys of nationally representative samples of American high school seniors were begun in 1975, making the class of 2006 the 32nd such class surveyed. Surveys of 8th and 10th graders were added to the design in 1991, making the 2006 nationally representative samples the 16th such classes surveyed. The sample sizes in 2006 are 17,026 eighth graders in 151 schools,

16,620 tenth graders in 123 schools, and 14,814 twelfth graders in 136 schools, for a total of 48,460 students in 410 secondary schools. The samples are drawn separately at each grade level to be representative of students in that grade in public and private secondary schools across the coterminous United States. Schools are selected with probability proportionate to their estimated class size.

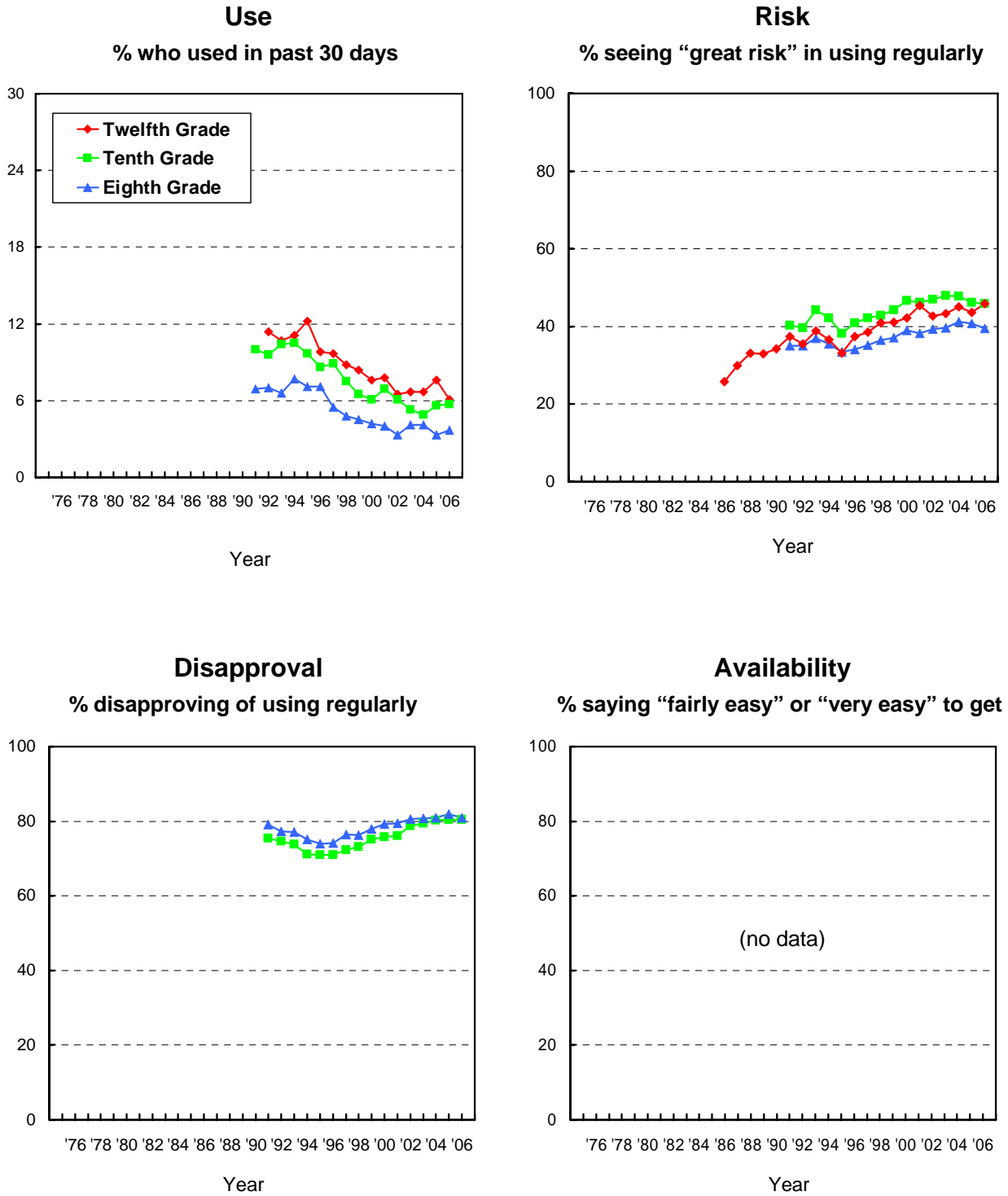
The findings summarized here will be published in the forthcoming volume: Johnston, L. D., O'Malley, P. M., Bachman, J. G., & Schulenberg, J. E. (2007). *Monitoring the Future national results on adolescent drug use: Overview of key findings, 2006*. (NIH Publication No. [yet to be assigned].) Bethesda, MD: National Institute on Drug Abuse.

FIGURE 1
Cigarettes: Trends in 30-Day Use, Risk, Disapproval, and Availability
 Eighth, Tenth, and Twelfth Graders



Source: The Monitoring the Future Study, the University of Michigan

FIGURE 2
Smokeless Tobacco: Trends in 30-Day Use, Risk, Disapproval,
and Availability
 Eighth, Tenth, and Twelfth Graders



Source: The Monitoring the Future Study, the University of Michigan

TABLE 1
Trends in Prevalence of Use of Cigarettes for Eighth, Tenth, and Twelfth Graders



	1975	1976	1977	1978	1979	1980	1981	1982	1983	1984	1985	1986	1987	1988	1989	1990
Lifetime																
8th Grade	—	—	—	—	—	—	—	—	—	—	—	—	—	—	—	—
10th Grade	—	—	—	—	—	—	—	—	—	—	—	—	—	—	—	—
12th Grade	73.6	75.4	75.7	75.3	74.0	71.0	71.0	70.1	70.6	69.7	68.8	67.6	67.2	66.4	65.7	64.4
Thirty-Day																
8th Grade	—	—	—	—	—	—	—	—	—	—	—	—	—	—	—	—
10th Grade	—	—	—	—	—	—	—	—	—	—	—	—	—	—	—	—
12th Grade	36.7	38.8	38.4	36.7	34.4	30.5	29.4	30.0	30.3	29.3	30.1	29.6	29.4	28.7	28.6	29.4
Daily																
8th Grade	—	—	—	—	—	—	—	—	—	—	—	—	—	—	—	—
10th Grade	—	—	—	—	—	—	—	—	—	—	—	—	—	—	—	—
12th Grade	26.9	28.8	28.8	27.5	25.4	21.3	20.3	21.1	21.2	18.7	19.5	18.7	18.7	18.1	18.9	19.1
1/2 Pack+ per Day																
8th Grade	—	—	—	—	—	—	—	—	—	—	—	—	—	—	—	—
10th Grade	—	—	—	—	—	—	—	—	—	—	—	—	—	—	—	—
12th Grade	17.9	19.2	19.4	18.8	16.5	14.3	13.5	14.2	13.8	12.3	12.5	11.4	11.4	10.6	11.2	11.3
Approx. Ns:																
8th Grade	—	—	—	—	—	—	—	—	—	—	—	—	—	—	—	—
10th Grade	—	—	—	—	—	—	—	—	—	—	—	—	—	—	—	—
12th Grade	9,400	15,400	17,100	17,800	15,500	15,900	17,500	17,700	16,300	15,900	16,000	15,200	16,300	16,300	16,700	15,200

Source: The Monitoring the Future Study, the University of Michigan.

Notes: Level of significance of difference between the two most recent classes: $s = .05$, $ss = .01$, $sss = .001$.

'—' indicates data not available.

Any apparent inconsistency between the change estimate and the prevalence of use estimates for the two most recent classes is due to rounding error.

TABLE 1 (cont'd)
Trends in Prevalence of Use of Cigarettes for Eighth, Tenth, and Twelfth Graders

	1991	1992	1993	1994	1995	1996	1997	1998	1999	2000	2001	2002	2003	2004	2005	2006	'05-'06 change
Lifetime																	
8th Grade	44.0	45.2	45.3	46.1	46.4	49.2	47.3	45.7	44.1	40.5	36.6	31.4	28.4	27.9	25.9	24.6	-1.3
10th Grade	55.1	53.5	56.3	56.9	57.6	61.2	60.2	57.7	57.6	55.1	52.8	47.4	43.0	40.7	38.9	36.1	-2.8 ss
12th Grade	63.1	61.8	61.9	62.0	64.2	63.5	65.4	65.3	64.6	62.5	61.0	57.2	53.7	52.8	50.0	47.1	-2.9 s
Thirty-Day																	
8th Grade	14.3	15.5	16.7	18.6	19.1	21.0	19.4	19.1	17.5	14.6	12.2	10.7	10.2	9.2	9.3	8.7	-0.6
10th Grade	20.8	21.5	24.7	25.4	27.9	30.4	29.8	27.6	25.7	23.9	21.3	17.7	16.7	16.0	14.9	14.5	-0.4
12th Grade	28.3	27.8	29.9	31.2	33.5	34.0	36.5	35.1	34.6	31.4	29.5	26.7	24.4	25.0	23.2	21.6	-1.6
Daily																	
8th Grade	7.2	7.0	8.3	8.8	9.3	10.4	9.0	8.8	8.1	7.4	5.5	5.1	4.5	4.4	4.0	4.0	-0.1
10th Grade	12.6	12.3	14.2	14.6	16.3	18.3	18.0	15.8	15.9	14.0	12.2	10.1	8.9	8.3	7.5	7.6	0.0
12th Grade	18.5	17.2	19.0	19.4	21.6	22.2	24.6	22.4	23.1	20.6	19.0	16.9	15.8	15.6	13.6	12.2	-1.4
1/2 Pack+ per Day																	
8th Grade	3.1	2.9	3.5	3.6	3.4	4.3	3.5	3.6	3.3	2.8	2.3	2.1	1.8	1.7	1.7	1.5	-0.1
10th Grade	6.5	6.0	7.0	7.6	8.3	9.4	8.6	7.9	7.6	6.2	5.5	4.4	4.1	3.3	3.1	3.3	+0.2
12th Grade	10.7	10.0	10.9	11.2	12.4	13.0	14.3	12.6	13.2	11.3	10.3	9.1	8.4	8.0	6.9	5.9	-1.0 s
Approx. Ns:																	
8th Grade	17,500	18,600	18,300	17,300	17,500	17,800	18,600	18,100	16,700	16,700	16,200	15,100	16,500	17,000	16,800	16,500	
10th Grade	14,800	14,800	15,300	15,800	17,000	15,600	15,500	15,000	13,600	14,300	14,000	14,300	15,800	16,400	16,200	16,200	
12th Grade	15,000	15,800	16,300	15,400	15,400	14,300	15,400	15,200	13,600	12,800	12,800	12,900	14,600	14,600	14,700	14,200	

Source: The Monitoring the Future Study, the University of Michigan.

Notes: Level of significance of difference between the two most recent classes: s = .05, ss = .01, sss = .001.

'—' indicates data not available.

Any apparent inconsistency between the change estimate and the prevalence of use estimates for the two most recent classes is due to rounding error.

TABLE 2
Trends in Availability and Attitudes about Smoking One or More Packs of Cigarettes per Day for Eighth, Tenth, and Twelfth Graders



	<u>1975</u>	<u>1976</u>	<u>1977</u>	<u>1978</u>	<u>1979</u>	<u>1980</u>	<u>1981</u>	<u>1982</u>	<u>1983</u>	<u>1984</u>	<u>1985</u>	<u>1986</u>	<u>1987</u>	<u>1988</u>	<u>1989</u>	<u>1990</u>
Perceived Risk^a																
8th Grade	—	—	—	—	—	—	—	—	—	—	—	—	—	—	—	—
10th Grade	—	—	—	—	—	—	—	—	—	—	—	—	—	—	—	—
12th Grade	51.3	56.4	58.4	59.0	63.0	63.7	63.3	60.5	61.2	63.8	66.5	66.0	68.6	68.0	67.2	68.2
Disapproval^b																
8th Grade	—	—	—	—	—	—	—	—	—	—	—	—	—	—	—	—
10th Grade	—	—	—	—	—	—	—	—	—	—	—	—	—	—	—	—
12th Grade	67.5	65.9	66.4	67.0	70.3	70.8	69.9	69.4	70.8	73.0	72.3	75.4	74.3	73.1	72.4	72.8
Availability^c																
8th Grade	—	—	—	—	—	—	—	—	—	—	—	—	—	—	—	—
10th Grade	—	—	—	—	—	—	—	—	—	—	—	—	—	—	—	—
Approx. Ns:																
8th Grade	—	—	—	—	—	—	—	—	—	—	—	—	—	—	—	—
10th Grade	—	—	—	—	—	—	—	—	—	—	—	—	—	—	—	—
12th Grade	2,800	2,900	3,100	3,800	3,300	3,200	3,600	3,600	3,300	3,300	3,300	3,000	3,300	3,300	2,800	2,600

Source: The Monitoring the Future Study, the University of Michigan.

Notes: Level of significance of difference between the two most recent classes: $s = .05$, $ss = .01$, $sss = .001$.

'—' indicates data not available.

Any apparent inconsistency between the change estimate and the prevalence of use estimates for the two most recent classes is due to rounding error.

TABLE 2 (cont'd)
Trends in Availability and Attitudes about Smoking One or More Packs of Cigarettes per Day for Eighth, Tenth, and Twelfth Graders

	<u>1991</u>	<u>1992</u>	<u>1993</u>	<u>1994</u>	<u>1995</u>	<u>1996</u>	<u>1997</u>	<u>1998</u>	<u>1999</u>	<u>2000</u>	<u>2001</u>	<u>2002</u>	<u>2003</u>	<u>2004</u>	<u>2005</u>	<u>2006</u>	<u>'05-'06</u> <u>change</u>
Perceived Risk^a																	
8th Grade	51.6	50.8	52.7	50.8	49.8	50.4	52.6	54.3	54.8	58.8	57.1	57.5	57.7	62.4	61.5	59.4	-2.1
10th Grade	60.3	59.3	60.7	59.0	57.0	57.9	59.9	61.9	62.7	65.9	64.7	64.3	65.7	68.4	68.1	67.7	-0.3
12th Grade	69.4	69.2	69.5	67.6	65.6	68.2	68.7	70.8	70.8	73.1	73.3	74.2	72.1	74.0	76.5	77.6	+1.1
Disapproval^b																	
8th Grade	82.8	82.3	80.6	78.4	78.6	77.3	80.3	80.0	81.4	81.9	83.5	84.6	84.6	85.7	85.3	85.6	+0.4
10th Grade	79.4	77.8	76.5	73.9	73.2	71.6	73.8	75.3	76.1	76.7	78.2	80.6	81.4	82.7	84.3	83.2	-1.1
12th Grade	71.4	73.5	70.6	69.8	68.2	67.2	67.1	68.8	69.5	70.1	71.6	73.6	74.8	76.2	79.8	81.5	+1.7
Availability^c																	
8th Grade	—	77.8	75.5	76.1	76.4	76.9	76.0	73.6	71.5	68.7	67.7	64.3	63.1	60.3	59.1	58.0	-1.1
10th Grade	—	89.1	89.4	90.3	90.7	91.3	89.6	88.1	88.3	86.8	86.3	83.3	80.7	81.4	81.5	79.5	-2.0 ss

Approx. Ns:

8th Grade	17,500	18,600	18,300	17,300	17,500	17,800	18,600	18,100	16,700	16,700	16,200	15,100	16,500	17,000	16,800	16,500
10th Grade	14,800	14,800	15,300	15,800	17,000	15,600	15,500	15,000	13,600	14,300	14,000	14,300	15,800	16,400	16,200	16,200
12th Grade	2,600	2,700	2,800	2,600	2,600	2,400	2,600	2,500	2,300	2,100	2,100	2,200	2,400	2,400	2,500	2,400

^aThe question text was: How much do you think people risk harming themselves (physically or in other ways) if they smoke one or more packs of cigarettes per day? Answer alternatives were: (1) No risk, (2) Slight risk, (3) Moderate risk, (4) Great risk, and (5) Can't say, drug unfamiliar. The percentage saying "great risk" is shown. For 8th and 10th graders: Beginning in 1999, perceived risk data based on two of four forms; N is two-thirds of N indicated.

^bThe question text was: Do you disapprove of people smoking one or more packs of cigarettes per day? Answer alternatives were: (1) Don't disapprove, (2) Disapprove, and (3) Strongly disapprove. For 8th and 10th graders, there was another category— "Can't say, drug unfamiliar"—which was included in the calculation of these percentages. The percentage saying they "disapprove" or "strongly disapprove" is shown. For 8th and 10th graders: Beginning in 1999, disapproval data based on two of four forms; N is two-thirds of N indicated.

^cThe question text was: How difficult do you think it would be for you to get cigarettes, if you wanted some? Answer alternatives were: (1) Probably impossible, (2) Very difficult, (3) Fairly difficult, (4) Fairly easy, (5) Very easy, and (8) Can't say, drug unfamiliar (included in the calculation of these percentages). The percentage saying cigarettes are "fairly easy" or "very easy" to get is shown. In 1992 only, availability data based on one of two forms; N is one-half of N indicated. The question was not asked of the 12th graders.

TABLE 3
Trends in Various Attitudes Towards Cigarette Use Among Eighth, Tenth, and Twelfth Graders

		Percentage who report "mostly agree" or "agree"															
		1991	1992	1993	1994	1995	1996	1997	1998	1999	2000	2001	2002	2003	2004	2005	2006
I prefer to date people who don't smoke																	
	8th Grade	77.8	76.0	75.2	74.1	73.6	70.9	72.3	74.5	76.9	77.2	79.4	80.6	79.6	81.0	81.2	81.2
	10th Grade	75.9	76.4	74.3	71.6	71.6	69.1	68.2	71.8	73.0	75.2	75.4	76.3	76.7	79.5	79.6	80.4
	12th Grade	74.0	72.3	70.4	69.0	66.0	66.0	63.9	66.0	64.4	70.0	68.5	72.3	71.8	72.0	74.8	76.7
Smoking is a dirty habit																	
	8th Grade	71.4	70.8	70.3	68.4	68.4	67.9	67.7	68.2	70.0	70.8	72.3	74.1	71.6	74.3	73.7	74.8
	10th Grade	70.7	71.0	69.2	67.5	68.0	66.6	65.8	68.3	68.7	70.8	70.3	71.2	70.5	71.7	72.0	73.7
	12th Grade	71.6	73.1	71.8	68.0	68.2	67.5	70.0	70.5	69.7	73.5	71.6	74.5	73.3	72.6	74.9	77.1
I think that becoming a smoker reflects poor judgment																	
	8th Grade	62.2	60.9	59.7	58.7	59.3	57.0	57.6	58.8	60.0	60.9	63.1	64.3	63.7	64.1	64.6	65.5
	10th Grade	57.5	59.0	57.3	54.2	53.7	52.9	50.1	53.9	54.7	56.5	55.4	59.3	56.8	58.8	59.4	61.5
	12th Grade	61.0	60.7	59.4	58.1	55.1	54.9	56.2	54.7	55.5	58.9	57.2	59.8	56.6	56.0	60.3	61.9
I strongly dislike being near people who are smoking																	
	8th Grade	53.8	52.1	52.9	51.1	49.7	45.7	46.6	48.5	48.7	50.1	52.2	54.0	54.4	57.0	55.7	55.4
	10th Grade	50.7	50.9	50.0	47.7	46.0	42.6	41.6	44.4	44.0	46.5	46.7	49.1	51.2	52.6	52.3	55.2
	12th Grade	48.9	49.4	48.6	47.4	44.2	42.3	38.3	41.0	39.3	41.3	43.3	47.4	47.6	46.5	47.8	49.7
I personally don't mind being around people who are smoking																	
	8th Grade	29.5	31.1	31.1	32.8	34.2	37.8	34.8	34.7	32.9	31.6	30.7	29.1	27.8	27.6	26.8	27.7
	10th Grade	33.1	35.0	35.1	36.8	38.5	42.8	41.1	39.7	38.8	38.1	35.5	34.7	32.2	30.0	30.4	30.8
	12th Grade	33.1	34.5	33.0	35.5	37.0	39.1	41.8	38.6	41.3	39.6	39.7	35.0	33.5	32.7	35.1	32.0
The harmful effects of cigarettes have been exaggerated																	
	8th Grade	19.9	21.8	22.4	24.4	23.1	25.3	22.4	23.8	22.7	21.6	21.4	22.0	20.5	22.1	20.4	21.1
	10th Grade	16.4	17.9	18.8	18.9	19.3	20.0	19.5	20.1	19.3	18.8	17.3	18.0	19.5	17.8	17.5	17.4
	12th Grade	13.8	13.0	13.6	14.9	14.4	12.8	14.0	13.4	14.5	16.8	15.8	12.7	13.1	13.1	13.1	14.1
Smokers know how to enjoy life more than nonsmokers																	
	8th Grade	4.9	5.0	5.4	6.3	5.9	6.7	5.4	5.8	6.1	5.4	5.5	5.2	5.3	5.9	5.4	5.7
	10th Grade	3.5	3.9	4.2	4.1	4.2	4.6	3.7	4.7	4.2	4.7	4.5	4.1	4.8	4.4	4.0	4.4
	12th Grade	3.6	3.3	3.5	3.8	4.0	3.5	3.2	3.8	4.3	3.7	5.5	4.1	3.5	3.5	3.4	3.8

Source: The Monitoring the Future Study, the University of Michigan.

Notes: For 8th graders: Ns range from 6,604 to 8,005. For 10th graders: Ns range from 6,398 to 7,807. For 12th graders: Ns range from 1,795 to 3,112.

TABLE 4
Trends in Prevalence of Use of Smokeless Tobacco for Eighth, Tenth, and Twelfth Graders

	1975-85	1986	1987	1988	1989	1990	1991	1992	1993	1994	1995	1996	1997	1998	1999	2000	2001	2002	2003	2004	2005	2006	'05-'06 change
Lifetime																							
8th Grade	—	—	—	—	—	—	22.2	20.7	18.7	19.9	20.0	20.4	16.8	15.0	14.4	12.8	11.7	11.2	11.3	11.0	10.1	10.2	+0.1
10th Grade	—	—	—	—	—	—	28.2	26.6	28.1	29.2	27.6	27.4	26.3	22.7	20.4	19.1	19.5	16.9	14.6	13.8	14.5	15.0	+0.6
12th Grade	—	31.4	32.2	30.4	29.2	—	—	32.4	31.0	30.7	30.9	29.8	25.3	26.2	23.4	23.1	19.7	18.3	17.0	16.7	17.5	15.2	-2.3
Thirty-Day																							
8th Grade	—	—	—	—	—	—	6.9	7.0	6.6	7.7	7.1	7.1	5.5	4.8	4.5	4.2	4.0	3.3	4.1	4.1	3.3	3.7	+0.3
10th Grade	—	—	—	—	—	—	10.0	9.6	10.4	10.5	9.7	8.6	8.9	7.5	6.5	6.1	6.9	6.1	5.3	4.9	5.6	5.7	+0.1
12th Grade	—	11.5	11.3	10.3	8.4	—	—	11.4	10.7	11.1	12.2	9.8	9.7	8.8	8.4	7.6	7.8	6.5	6.7	6.7	7.6	6.1	-1.5
Daily																							
8th Grade	—	—	—	—	—	—	1.6	1.8	1.5	1.9	1.2	1.5	1.0	1.0	0.9	0.9	1.2	0.8	0.8	1.0	0.7	0.7	+0.1
10th Grade	—	—	—	—	—	—	3.3	3.0	3.3	3.0	2.7	2.2	2.2	2.2	1.5	1.9	2.2	1.7	1.8	1.6	1.9	1.7	-0.2
12th Grade	—	4.7	5.1	4.3	3.3	—	—	4.3	3.3	3.9	3.6	3.3	4.4	3.2	2.9	3.2	2.8	2.0	2.2	2.8	2.5	2.2	-0.3
Approx. Ns:																							
8th Grade	—	—	—	—	—	—	17,500	18,600	18,300	17,300	17,500	17,800	18,600	18,100	16,700	16,700	16,200	15,100	16,500	17,000	16,800	16,500	16,500
10th Grade	—	—	—	—	—	—	14,800	14,800	15,300	15,800	17,000	15,600	15,500	15,000	13,600	14,300	14,000	14,300	15,800	16,400	16,200	16,200	16,200
12th Grade	—	15,200	16,300	16,300	16,700	15,200	15,000	15,800	16,300	15,400	15,400	14,300	15,400	15,200	13,600	12,800	12,800	12,900	14,600	14,600	14,700	14,200	14,200

Source: The Monitoring the Future Study, the University of Michigan.

Notes: Level of significance of difference between the two most recent classes: s = .05, ss = .01, sss = .001.

'—' indicates data not available.

Any apparent inconsistency between the change estimate and the prevalence of use estimates for the two most recent classes is due to rounding error.

For 8th and 10th graders: Data based on one of two forms for 1991-96 and on two of four forms beginning in 1997; N is one-half of N indicated.

For 12th graders: Data based on one form; N is one-fifth of N indicated in 1986-1988 and one-sixth of N indicated beginning in 1989.

The prevalence of use of smokeless tobacco was not asked of 12th graders in 1990 and 1991. Prior to 1990 the prevalence of use question on smokeless tobacco was located near the end of one 12th-grade questionnaire form, whereas after 1991 the question was placed earlier and in a different form. This shift could explain the discontinuities between the corresponding data.

TABLE 5
Trends in Attitudes about Regular Smokeless Tobacco Use for Eighth, Tenth, and Twelfth Graders

	1975-85	1986	1987	1988	1989	1990	1991	1992	1993	1994	1995	1996	1997	1998	1999	2000	2001	2002	2003	2004	2005	2006	'05-'06 change		
Perceived Risk^a																									
8th Grade	—	—	—	—	—	—	35.1	35.1	36.9	35.5	33.5	34.0	35.2	36.5	37.1	39.0	38.2	39.4	39.7	41.3	40.8	39.5	39.5	-1.2	
10th Grade	—	—	—	—	—	—	40.3	39.6	44.2	42.2	38.2	41.0	42.2	42.8	44.2	46.7	46.2	46.9	48.0	47.8	46.1	45.9	45.9	-0.2	
12th Grade	—	25.8	30.0	33.2	32.9	34.2	37.4	35.5	38.9	36.6	33.2	37.4	38.6	40.9	41.1	42.2	45.4	42.6	43.3	45.0	43.6	45.9	45.9	+2.3	
Disapproval^b																									
8th Grade	—	—	—	—	—	—	79.1	77.2	77.1	75.1	74.0	74.1	76.5	76.3	78.0	79.2	79.4	80.6	80.7	81.0	82.0	81.0	81.0	81.0	-1.1
10th Grade	—	—	—	—	—	—	75.4	74.6	73.8	71.2	71.0	71.0	72.3	73.2	75.1	75.8	76.1	78.7	79.4	80.2	80.5	80.5	80.5	80.5	+0.1
Approx. Ns:																									
8th Grade	—	—	—	—	—	—	17,500	18,600	18,300	17,300	17,500	17,800	18,600	18,100	16,700	16,700	16,200	15,100	16,500	17,000	16,800	16,800	16,500	16,500	
10th Grade	—	—	—	—	—	—	14,800	14,800	15,300	15,800	17,000	15,600	15,500	15,000	13,600	14,300	14,000	14,300	15,800	16,400	16,200	16,200	16,200	16,200	
12th Grade	—	3,000	3,300	3,300	2,800	2,600	2,600	2,700	2,800	2,600	2,600	2,400	2,600	2,500	2,300	2,100	2,100	2,200	2,400	2,400	2,500	2,500	2,400	2,400	

Source: The Monitoring the Future Study, the University of Michigan.

Notes: Level of significance of difference between the two most recent classes: $s = .05$, $ss = .01$, $sss = .001$.

'—' indicates data not available.

Any apparent inconsistency between the change estimate and the prevalence of use estimates for the two most recent classes is due to rounding error.

^aThe question text was: How much do you think people risk harming themselves (physically or in other ways) if they use smokeless tobacco regularly? Answer alternatives were: (1) No risk, (2) Slight risk, (3) Moderate risk, (4) Great risk, and (5) Can't say, drug unfamiliar. The percentage saying "great risk" is shown.

^bThe question text was: Do you disapprove of people using smokeless tobacco regularly? Answer alternatives were: (1) Don't disapprove, (2) Disapprove, and (3) Strongly disapprove. For 8th and 10th graders, there was another category—"Can't say, drug unfamiliar"—which was included in the calculation of these percentages. The percentage saying they "disapprove" or "strongly disapprove" is shown. This question was not asked of 12th graders.

TABLE 6
Cigarettes: Trends in Thirty-Day Prevalence of Use by Subgroups for Eighth Graders

	Percentage who used in last thirty days											'05-'06 change					
	1991	1992	1993	1994	1995	1996	1997	1998	1999	2000	2001	2002	2003	2004	2005	2006	16,500
Approx. N =	17,500	18,600	18,300	17,300	17,500	17,800	18,600	18,100	16,700	16,700	16,200	15,100	16,500	17,000	16,800	16,500	
Total	14.3	15.5	16.7	18.6	19.1	21.0	19.4	19.1	17.5	14.6	12.2	10.7	10.2	9.2	9.3	8.7	-0.6
Gender:																	
Male	15.5	14.9	17.2	19.3	18.8	20.6	19.1	18.0	16.7	14.3	12.2	11.0	9.6	8.3	8.7	8.1	-0.6
Female	13.1	15.9	16.3	17.9	19.0	21.1	19.5	19.8	17.7	14.7	12.0	10.4	10.6	9.9	9.7	8.9	-0.8
College Plans:																	
None or under 4 years	29.2	31.9	34.1	36.6	36.5	39.2	40.0	40.1	40.3	34.7	30.0	29.3	27.8	25.6	26.7	23.2	-3.5
Complete 4 years	11.8	13.1	14.3	16.1	16.8	18.2	16.9	16.5	14.5	12.2	10.0	8.9	8.3	7.4	7.4	7.1	-0.2
Region:																	
Northeast	13.7	14.4	15.0	17.8	18.6	22.1	18.0	15.6	15.7	13.7	11.4	9.1	7.7	7.2	7.8	6.7	-1.0
North Central	15.5	16.5	16.3	18.5	20.9	23.2	20.0	22.3	21.3	17.1	12.0	11.0	12.2	10.8	9.5	9.3	-0.2
South	15.7	17.0	18.2	19.5	19.4	21.1	21.0	21.1	18.7	14.7	14.3	13.0	11.7	10.3	11.6	10.9	-0.7
West	10.0	12.2	16.4	18.0	16.5	17.1	17.1	15.1	12.1	12.2	9.3	7.5	7.0	7.4	6.3	5.7	-0.6
Population Density:																	
Large MSA	12.8	15.0	14.1	15.5	16.5	19.4	15.8	16.4	12.7	12.1	9.3	7.5	7.7	7.7	6.7	6.4	-0.3
Other MSA	14.9	15.3	17.8	20.7	19.4	21.4	19.7	17.7	16.0	13.1	11.6	10.6	9.8	8.9	9.8	8.8	-1.0
Non-MSA	14.8	16.4	17.9	17.8	21.5	22.1	22.8	24.8	26.1	21.1	16.9	14.9	14.4	11.6	11.8	11.6	-0.2
Parental Education: ^a																	
1.0-2.0 (Low)	26.2	24.1	23.3	26.1	25.3	26.5	26.9	26.7	26.6	22.0	20.3	20.3	17.5	15.8	16.6	14.7	-2.0
2.5-3.0	16.4	16.9	19.8	20.6	22.7	24.4	22.4	23.9	23.5	19.6	16.4	14.5	14.8	12.2	13.4	12.5	-1.0
3.5-4.0	13.9	14.9	17.4	20.1	20.8	21.4	20.9	21.4	17.0	14.7	12.6	10.5	9.6	9.6	10.5	8.8	-1.8
4.5-5.0	10.1	13.3	12.5	14.9	14.9	18.4	16.2	14.2	12.3	10.2	8.3	7.8	6.7	6.7	5.9	5.5	-0.4
5.5-6.0 (High)	11.3	11.5	13.3	15.1	14.5	17.3	15.3	13.8	12.2	9.8	6.9	5.8	6.0	5.2	4.3	4.8	+0.5
Race (2-year average): ^b																	
White	—	16.2	17.8	18.9	20.7	22.7	22.8	21.5	20.1	17.7	14.7	12.0	10.9	10.0	9.4	9.3	-0.1
Black	—	5.3	6.6	8.7	8.9	9.6	10.9	10.6	10.7	9.6	8.2	7.7	6.9	6.9	7.1	6.0	-1.1
Hispanic	—	16.7	18.3	21.3	21.6	19.6	19.1	20.1	20.5	16.6	13.0	12.7	11.9	10.1	9.0	8.8	-0.2

Source: The Monitoring the Future Study, the University of Michigan.

Notes: Level of significance of difference between the two most recent classes: $s = .05$, $ss = .01$, $sss = .001$. '—' indicates data not available.

Any apparent inconsistency between the change estimate and the prevalence of use estimates for the two most recent classes is due to rounding error.

^aParental education is an average score of mother's education and father's education. See Appendix B for details.

^bTo derive percentages for each racial subgroup, data for the specified year and the previous year have been combined to increase subgroup sample size and thus provide more stable estimates. For the data beginning in 2005, see the race/ethnicity note at the end of Appendix D.

TABLE 7
Cigarettes: Trends in Thirty-Day Prevalence of Use by Subgroups for Tenth Graders

	Percentage who used in last thirty days													'05-'06 change			
	1991	1992	1993	1994	1995	1996	1997	1998	1999	2000	2001	2002	2003	2004	2005	2006	
Approx. N =	14,800	14,800	15,300	15,800	17,000	15,600	15,500	15,000	13,600	14,300	14,000	14,300	15,800	16,400	16,200	16,200	
Total	20.8	21.5	24.7	25.4	27.9	30.4	29.8	27.6	25.7	23.9	21.3	17.7	16.7	16.0	14.9	14.5	-0.4
Gender:																	
Male	20.8	20.6	24.6	26.6	27.7	30.1	28.2	26.2	25.2	23.8	20.9	16.7	16.2	16.2	14.5	13.4	-1.1
Female	20.7	22.2	24.5	23.9	27.9	30.8	31.1	29.1	25.8	23.6	21.5	18.6	17.0	15.7	15.1	15.5	+0.3
College Plans:																	
None or under 4 years	36.5	35.0	41.9	42.2	46.3	46.2	47.2	45.2	44.0	38.6	38.1	33.3	33.0	33.1	29.4	32.7	+3.3
Complete 4 years	17.3	18.6	21.0	21.7	24.7	27.8	26.8	24.5	22.7	21.5	18.5	15.1	14.0	13.6	12.9	12.1	-0.8
Region:																	
Northeast	22.4	21.9	27.1	24.5	27.8	31.7	29.3	30.1	28.0	23.9	18.1	15.9	16.6	16.6	14.9	11.8	-3.1
North Central	22.9	24.3	26.0	28.8	30.1	32.5	31.7	29.5	30.2	27.1	24.2	19.2	18.4	14.6	16.2	18.1	+1.9
South	21.2	19.8	24.0	25.7	30.8	33.4	32.2	29.8	26.3	25.5	23.5	19.6	18.2	20.4	16.4	15.6	-0.9
West	16.7	20.2	21.2	20.1	19.6	20.8	23.2	19.6	17.5	16.8	15.0	14.1	12.5	10.9	10.9	10.9	0.0
Population Density:																	
Large MSA	19.7	21.6	22.5	22.3	23.3	26.2	26.6	22.5	22.9	23.1	17.3	14.2	13.1	12.0	11.7	11.5	-0.2
Other MSA	20.3	20.3	23.8	26.3	28.9	31.1	28.9	26.6	25.0	21.3	20.5	17.6	16.6	16.6	14.7	13.3	-1.4
Non-MSA	22.7	23.7	28.2	26.7	31.3	33.9	34.9	35.7	30.4	29.4	27.6	22.6	22.4	20.4	19.8	22.4	+2.6
Parental Education: ^a																	
1.0-2.0 (Low)	23.5	28.4	29.5	26.4	30.9	28.7	28.2	28.0	30.5	29.3	22.5	21.4	23.4	19.3	16.4	20.4	+4.0
2.5-3.0	24.1	23.3	28.0	29.1	33.2	33.8	33.2	33.0	29.6	26.8	25.7	22.4	21.2	19.9	19.7	19.7	0.0
3.5-4.0	20.4	20.6	24.8	26.0	27.8	31.6	30.9	27.3	26.0	25.3	21.1	17.4	16.2	17.8	15.7	15.5	-0.2
4.5-5.0	18.5	19.5	20.1	22.6	25.9	28.7	28.5	25.7	22.4	21.2	18.9	15.1	13.4	12.6	12.5	10.8	-1.7
5.5-6.0 (High)	18.5	18.9	21.4	20.7	21.8	27.8	24.6	22.5	21.4	19.1	17.1	12.7	11.6	10.8	10.8	10.0	-0.8
Race (2-year average): ^b																	
White	—	24.1	26.0	27.8	29.7	32.9	34.4	33.2	30.8	28.2	25.7	22.4	20.0	18.7	17.6	16.6	-1.0
Black	—	6.6	7.5	9.8	11.5	12.2	12.8	13.7	12.5	11.1	11.1	9.8	8.9	9.2	8.7	8.0	-0.6
Hispanic	—	18.3	20.5	19.4	21.4	23.7	23.0	21.3	21.1	19.6	16.8	14.3	13.2	13.9	13.5	12.1	-1.4

Source: The Monitoring the Future Study, the University of Michigan.

Notes: Level of significance of difference between the two most recent classes: $s = .05$, $ss = .01$, $sss = .001$. '—' indicates data not available.

Any apparent inconsistency between the change estimate and the prevalence of use estimates for the two most recent classes is due to rounding error.
^aParental education is an average score of mother's education and father's education. See Appendix B for details.

^bTo derive percentages for each racial subgroup, data for the specified year and the previous year have been combined to increase subgroup sample size and thus provide more stable estimates. For the data beginning in 2005, see the race/ethnicity note at the end of Appendix D.

TABLE 8
Cigarettes: Trends in Thirty-Day Prevalence of Use by Subgroups for Twelfth Graders

	Percentage who used in last thirty days															
	Class of:															
	1975	1976	1977	1978	1979	1980	1981	1982	1983	1984	1985	1986	1987	1988	1989	1990
Approx. N =	9,400	15,400	17,100	17,800	15,500	15,900	17,500	17,700	16,300	15,900	16,000	15,200	16,300	16,300	16,700	15,200
Total	36.7	38.8	38.4	36.7	34.4	30.5	29.4	30.0	30.3	29.3	30.1	29.6	29.4	28.7	28.6	29.4
Gender:																
Male	37.2	37.7	36.6	34.5	31.2	26.8	26.5	26.8	28.0	25.9	28.2	27.9	27.0	28.0	27.7	29.1
Female	35.9	39.1	39.6	38.1	37.1	33.4	31.6	32.6	31.6	31.9	31.4	30.6	31.4	28.9	29.0	29.2
College Plans:																
None or under 4 years	—	46.3	46.2	44.6	43.0	39.6	38.1	38.7	38.0	37.9	40.5	38.5	39.7	37.5	38.0	37.5
Complete 4 years	—	29.8	29.4	27.4	26.0	22.3	22.3	22.1	23.3	22.7	22.8	24.0	24.3	24.4	24.1	25.4
Region:																
Northeast	40.1	41.8	43.0	40.6	37.0	34.1	31.5	32.1	34.6	33.5	34.2	35.2	34.1	31.2	29.4	31.9
North Central	39.5	41.3	40.5	39.0	36.6	31.5	32.4	33.5	33.2	31.4	34.1	32.5	31.7	31.1	34.9	34.0
South	36.2	39.1	37.6	35.7	35.4	31.8	28.9	29.4	28.7	28.6	25.6	26.1	26.0	28.0	26.4	26.1
West	26.3	28.3	27.7	27.3	24.8	21.2	21.8	20.4	21.8	22.9	26.3	23.3	26.6	23.9	22.7	25.1
Population Density:																
Large MSA	39.7	40.4	40.9	37.5	33.4	31.2	30.6	32.1	30.8	31.3	31.9	30.8	29.3	26.9	25.9	27.9
Other MSA	35.1	35.9	36.1	34.3	33.5	29.7	27.4	27.8	29.1	28.2	28.5	28.0	28.2	28.3	28.2	29.6
Non-MSA	36.7	40.9	39.2	39.4	36.4	30.9	30.9	31.2	31.5	29.3	30.8	31.0	31.8	31.4	32.2	30.4
Parental Education: ^a																
1.0-2.0 (Low)	37.2	43.2	39.6	38.1	38.1	32.7	32.5	32.6	32.7	33.6	32.3	28.6	28.8	28.1	25.4	26.3
2.5-3.0	37.0	41.2	40.8	39.3	35.9	34.2	31.7	32.0	32.2	31.8	32.3	32.3	31.4	29.9	30.8	30.8
3.5-4.0	31.9	35.3	37.3	34.0	33.3	28.0	28.2	29.0	28.0	28.1	29.7	29.7	28.8	27.8	29.4	29.3
4.5-5.0	32.3	35.0	33.0	32.6	30.1	25.7	26.0	25.5	27.8	25.2	27.7	26.4	27.6	28.6	27.0	29.1
5.5-6.0 (High)	26.8	30.8	32.8	31.9	29.6	24.0	22.5	25.1	25.5	23.7	22.6	26.7	29.3	27.8	26.3	28.6
Race (2-year average): ^b																
White	—	—	38.3	37.6	36.0	33.0	30.5	30.7	31.3	31.2	31.3	31.9	32.1	32.2	32.2	32.3
Black	—	—	36.7	32.7	30.2	26.8	23.7	21.8	21.2	19.3	18.1	16.9	14.2	13.3	12.6	12.2
Hispanic	—	—	35.7	32.8	26.8	22.6	23.2	24.7	24.7	25.3	25.5	23.7	22.7	21.9	20.6	21.7

Source: The Monitoring the Future Study, the University of Michigan.

Notes: Level of significance of difference between the two most recent classes: $s = .05$, $ss = .01$, $sss = .001$.

‘—’ indicates data not available.

Any apparent inconsistency between the change estimate and the prevalence of use estimates for the two most recent classes is due to rounding error.



TABLE 8 (cont'd)
Cigarettes: Trends in Thirty-Day Prevalence of Use by Subgroups for Twelfth Graders

	Percentage who used in last thirty days													'05-'06 change			
	1991	1992	1993	1994	1995	1996	1997	1998	1999	2000	2001	2002	2003		2004	2005	2006
Approx. N =	15,000	15,800	16,300	15,400	15,400	14,300	15,400	15,200	13,600	12,800	12,800	12,900	14,600	14,600	14,700	14,200	
Total	28.3	27.8	29.9	31.2	33.5	34.0	36.5	35.1	34.6	31.4	29.5	26.7	24.4	25.0	23.2	21.6	-1.6
Gender:																	
Male	29.0	29.2	30.7	32.9	34.5	34.9	37.3	36.3	35.4	32.8	29.7	27.4	26.2	25.3	24.8	22.4	-2.4 s
Female	27.5	26.1	28.7	29.2	32.0	32.4	35.2	33.3	33.5	29.7	28.7	25.5	22.1	24.1	20.7	20.1	-0.6
College Plans:																	
None or under 4 years	38.1	38.6	37.3	40.9	43.5	45.0	45.7	46.7	44.9	43.6	40.8	37.5	36.2	36.8	34.8	32.9	-1.9
Complete 4 years	24.2	23.8	27.3	28.0	29.9	30.8	33.1	31.3	31.4	27.3	25.9	23.6	20.8	21.6	20.0	18.6	-1.4
Region:																	
Northeast	30.5	29.6	34.2	33.2	34.4	38.5	40.6	35.9	34.2	33.1	30.3	27.3	25.0	25.9	22.0	23.1	+1.1
North Central	34.6	31.7	33.2	36.2	37.8	37.7	39.3	40.0	37.8	35.6	35.9	31.7	27.3	28.3	26.8	23.6	-3.2
South	25.4	26.4	29.0	30.7	33.5	33.2	35.0	34.3	36.2	29.6	25.9	27.2	24.3	24.6	24.6	23.2	-1.4
West	23.2	22.8	22.9	24.0	26.5	24.4	30.5	29.1	27.6	28.1	25.2	19.4	20.7	20.1	17.5	15.0	-2.5
Population Density:																	
Large MSA	26.2	25.6	29.5	29.0	33.9	32.1	34.9	32.9	30.0	27.4	27.3	24.8	18.9	20.8	20.8	20.7	-0.1
Other MSA	29.3	26.9	29.8	31.1	31.7	32.6	35.7	34.2	35.0	31.5	28.2	26.2	25.1	26.3	22.6	20.3	-2.3
Non-MSA	28.6	31.5	30.3	33.8	36.2	38.2	40.0	39.7	38.7	36.3	34.3	30.1	30.4	27.6	27.4	25.3	-2.0
Parental Education: ^a																	
1.0-2.0 (Low)	31.3	27.1	26.5	26.2	31.2	31.5	31.2	32.3	33.0	31.3	24.8	20.9	23.5	21.0	19.1	21.1	+2.0
2.5-3.0	28.7	30.3	30.4	32.8	35.0	35.5	36.5	36.0	37.3	32.2	31.5	28.9	27.0	28.7	27.3	24.7	-2.6
3.5-4.0	28.4	27.8	29.9	31.4	33.2	33.2	35.6	36.7	35.0	32.8	30.3	28.6	24.3	26.3	24.8	22.9	-1.8
4.5-5.0	26.9	25.8	30.1	32.0	32.6	34.5	37.5	34.2	32.4	30.2	29.3	25.0	22.6	23.8	21.8	19.2	-2.6
5.5-6.0 (High)	27.1	25.5	30.5	30.4	34.0	32.9	38.5	33.1	34.4	27.4	25.0	25.3	21.0	19.9	18.0	17.4	-0.6
Race (2-year average): ^b																	
White	32.2	31.8	33.2	35.2	36.6	38.1	40.7	41.7	40.1	37.9	35.3	32.5	29.4	28.2	27.6	25.9	-1.7
Black	10.6	8.7	9.5	10.9	12.9	14.2	14.3	14.9	14.9	14.3	13.3	12.1	10.0	10.1	10.7	10.5	-0.1
Hispanic	24.0	25.0	24.2	23.6	25.1	25.4	25.9	26.6	27.3	27.7	23.8	21.3	19.0	18.5	17.1	16.0	-1.1

^aParental education is an average score of mother's education and father's education. See Appendix B for details.

^bTo derive percentages for each racial subgroup, data for the specified year and the previous year have been combined to increase subgroup sample size and thus provide more stable estimates. For the data beginning in 2005, see the race/ethnicity note at the end of Appendix D.

TABLE 9
Smokeless Tobacco: Trends in Thirty-Day Prevalence of Use by Subgroups for Eighth Graders

		Percentage who used in last thirty days													'05-'06			
		1991	1992	1993	1994	1995	1996	1997	1998	1999	2000	2001	2002	2003	2004	2005	2006	change
Total		6.9	7.0	6.6	7.7	7.1	7.1	5.5	4.8	4.5	4.2	4.0	3.3	4.1	4.1	3.3	3.7	+0.3
Gender:																		
Male		12.7	12.5	10.9	12.8	11.8	11.4	9.9	8.1	6.9	6.7	6.9	5.4	6.7	6.4	5.3	5.3	0.0
Female		1.4	2.0	2.7	2.4	2.9	2.9	1.5	1.5	2.1	1.8	1.4	1.3	1.8	1.7	1.5	2.1	+0.6
College Plans:																		
None or under 4 years		12.7	17.1	15.5	16.7	15.4	16.4	12.6	13.9	13.2	11.4	14.6	10.2	12.8	12.3	10.8	11.3	+0.5
Complete 4 years		6.1	5.5	5.3	6.5	6.0	5.6	4.6	3.8	3.5	3.4	2.9	2.6	3.3	3.2	2.4	2.9	+0.4
Region:																		
Northeast		5.0	4.9	3.4	6.1	5.4	4.9	3.2	2.7	2.5	2.7	3.7	2.7	3.1	3.4	1.4	2.9	+1.5
North Central		7.1	7.5	7.2	7.1	7.6	8.3	6.8	4.3	5.3	4.8	4.0	3.9	3.5	4.2	3.2	4.0	+0.7
South		9.5	9.3	8.0	9.9	8.7	8.1	6.7	6.9	5.9	5.8	5.4	4.1	5.9	5.5	5.3	4.6	-0.7
West		3.5	4.4	6.3	6.0	5.0	5.9	4.1	3.9	2.9	1.9	2.1	1.5	2.5	2.0	1.4	2.2	+0.7
Population Density:																		
Large MSA		4.8	4.2	3.3	4.6	4.1	4.2	3.6	2.9	1.8	2.4	2.4	1.5	2.6	1.9	1.3	1.9	+0.6
Other MSA		6.2	6.9	6.8	6.4	6.7	7.1	4.7	4.1	3.9	3.5	3.5	2.9	3.7	3.6	2.8	3.1	+0.4
Non-MSA		10.4	10.3	9.9	13.0	11.2	10.6	9.0	8.5	8.9	7.0	7.0	6.2	6.9	7.7	7.0	7.1	+0.1
Parental Education: ^a																		
1.0-2.0 (Low)		11.4	7.8	9.4	8.9	10.6	6.3	8.3	5.4	6.6	7.4	5.0	4.5	6.8	6.9	5.7	5.9	+0.2
2.5-3.0		8.4	8.5	7.5	8.4	9.9	8.8	6.0	5.1	5.7	5.2	5.4	5.1	5.1	6.0	4.9	3.9	-1.0
3.5-4.0		6.7	7.0	7.5	8.7	7.0	7.2	6.5	5.9	4.5	4.5	3.7	3.2	4.1	3.5	3.1	3.7	+0.6
4.5-5.0		4.8	7.0	5.2	6.1	5.0	6.8	4.8	4.4	3.3	2.9	2.5	2.4	3.1	3.2	2.4	3.1	+0.8
5.5-6.0 (High)		6.1	4.6	4.9	6.8	5.8	5.9	3.7	3.9	3.1	3.0	4.2	2.5	2.7	2.9	1.8	3.4	+1.6
Race (2-year average): ^b																		
White		—	8.3	8.0	8.1	8.9	8.8	7.6	6.1	5.4	5.2	4.8	4.1	3.9	4.4	4.2	3.7	-0.5
Black		—	1.8	2.7	3.2	2.6	2.2	2.6	2.3	2.3	2.7	2.2	1.6	2.7	3.0	2.0	2.1	+0.1
Hispanic		—	4.2	4.0	5.0	5.7	5.2	4.6	4.5	4.6	3.7	3.3	4.0	4.7	4.0	2.6	3.1	+0.5

Source: The Monitoring the Future Study, the University of Michigan.

Notes: Level of significance of difference between the two most recent classes: $s = .05$, $ss = .01$, $sss = .001$. '—' indicates data not available.

Any apparent inconsistency between the change estimate and the prevalence of use estimates for the two most recent classes is due to rounding error.

Data based on one of two forms in 1991–96 and on two of four forms beginning in 1997; N is one-half of N indicated.

^aParental education is an average score of mother's education and father's education. See Appendix B for details.

^bTo derive percentages for each racial subgroup, data for the specified year and the previous year have been combined to increase subgroup sample size and thus provide more stable estimates. For the data beginning in 2005, see the race/ethnicity note at the end of Appendix D.

TABLE 10
Smokeless Tobacco: Trends in Thirty-Day Prevalence of Use by Subgroups for Tenth Graders

	Percentage who used in last thirty days												'05-'06 change				
	1991	1992	1993	1994	1995	1996	1997	1998	1999	2000	2001	2002	2003	2004	2005	2006	
Approx. N =	14,800	14,800	15,300	15,800	17,000	15,600	15,500	15,000	13,600	14,300	14,000	14,300	15,800	16,400	16,200	16,200	
Total	10.0	9.6	10.4	10.5	9.7	8.6	8.9	7.5	6.5	6.1	6.9	6.1	5.3	4.9	5.6	5.7	+0.1
Gender:																	
Male	18.7	18.1	19.3	19.2	17.2	15.0	14.9	13.8	12.2	11.4	12.7	9.9	9.6	9.0	9.7	10.2	+0.6
Female	1.3	1.8	2.0	2.1	2.1	2.3	2.7	1.7	1.3	1.3	1.6	2.1	1.3	1.0	1.6	1.2	-0.4
College Plans:																	
None or under 4 years	16.9	17.5	20.2	19.9	20.3	16.3	18.5	17.8	13.2	13.9	16.0	13.6	13.0	12.2	13.3	14.9	+1.6
Complete 4 years	8.4	8.0	8.4	8.5	7.8	7.2	7.2	5.7	5.4	4.8	5.4	4.8	4.1	3.9	4.5	4.5	0.0
Region:																	
Northeast	8.6	5.3	8.0	9.0	7.6	6.8	9.3	6.5	5.2	4.6	4.9	4.7	4.5	5.1	4.6	4.5	-0.1
North Central	11.0	9.6	10.0	10.0	11.0	9.5	7.1	7.9	8.1	6.2	7.0	4.8	4.9	3.7	5.7	7.5	+1.8
South	11.6	11.4	11.8	11.7	10.9	10.2	10.2	9.5	7.9	7.7	9.6	8.3	7.5	7.3	7.0	6.0	-1.1
West	7.8	10.9	11.1	10.9	7.7	6.0	8.2	4.6	4.0	4.5	3.0	5.1	3.5	3.0	4.5	4.1	-0.3
Population Density:																	
Large MSA	5.9	6.4	6.5	6.2	5.9	5.5	4.2	3.7	4.6	5.6	4.1	4.5	3.7	3.0	3.2	3.9	+0.7
Other MSA	9.2	9.3	10.1	10.9	9.2	8.4	8.3	5.7	5.3	4.3	5.7	6.1	4.8	4.3	5.3	5.3	0.0
Non-MSA	14.7	13.3	14.1	13.9	15.0	12.2	14.7	15.1	11.3	9.8	12.5	8.2	9.2	9.0	9.4	9.6	+0.2
Parental Education: ^a																	
1.0-2.0 (Low)	6.6	10.1	10.9	9.4	9.6	8.1	9.0	6.8	7.2	7.4	6.9	6.7	7.4	3.7	4.4	7.4	+2.9
2.5-3.0	12.1	11.0	12.2	12.5	10.4	9.7	9.4	8.2	7.0	6.4	8.9	8.1	5.0	5.8	6.7	7.1	+0.4
3.5-4.0	10.6	10.5	10.9	10.2	10.9	8.3	10.3	8.6	7.3	6.3	7.1	5.5	4.9	5.2	6.0	5.7	-0.3
4.5-5.0	9.3	7.6	9.9	9.8	9.8	8.5	7.2	6.9	6.1	6.2	5.7	5.4	5.7	4.4	5.6	4.9	-0.7
5.5-6.0 (High)	8.6	8.1	7.0	8.9	6.0	7.7	8.3	5.2	4.8	4.0	4.8	5.2	4.3	4.4	3.8	5.3	+1.4
Race (2-year average): ^b																	
White	—	11.4	12.0	12.5	12.0	11.0	10.4	10.0	8.7	7.5	7.5	7.7	6.9	6.1	6.6	6.9	+0.3
Black	—	2.9	2.3	2.3	2.5	2.5	2.8	2.3	1.6	2.0	3.2	2.6	2.5	2.7	2.5	3.2	+0.7
Hispanic	—	6.2	6.1	4.3	3.6	4.0	4.6	4.8	4.8	4.5	4.0	4.0	4.1	3.3	3.1	3.4	+0.3

Source: The Monitoring the Future Study, the University of Michigan.

Notes: Level of significance of difference between the two most recent classes: s = .05, ss = .01, sss = .001. '—' indicates data not available.

Any apparent inconsistency between the change estimate and the prevalence of use estimates for the two most recent classes is due to rounding error.

Data based on one of two forms in 1991–96 and on two of four forms beginning in 1997; N is one-half of N indicated.

^aParental education is an average score of mother's education and father's education. See Appendix B for details.

^bTo derive percentages for each racial subgroup, data for the specified year and the previous year have been combined to increase subgroup sample size and thus provide more stable estimates. For the data beginning in 2005, see the race/ethnicity note at the end of Appendix D.

TABLE 11
Smokeless Tobacco: Trends in Thirty-Day Prevalence of Use by Subgroups for Twelfth Graders

	Percentage who used in last thirty days																	'05-'06 change					
	1975-85	1986	1987	1988	1989	1990-91 ^a	1992	1993	1994	1995	1996	1997	1998	1999	2000	2001	2002		2003	2004	2005	2006	
Approx. N =	—	15,200	16,300	16,300	16,700	—	15,800	16,300	15,400	15,400	14,300	15,400	15,200	13,600	12,800	12,800	12,900	14,600	14,600	14,700	14,200	14,200	
Total	—	11.5	11.3	10.3	8.4	—	11.4	10.7	11.1	12.2	9.8	9.7	8.8	8.4	7.6	7.8	6.5	6.7	6.7	7.6	6.1	-1.5	
Gender:																							
Male	—	22.3	22.8	19.9	15.9	—	20.8	19.7	20.3	23.6	19.5	18.7	15.6	15.5	14.4	14.2	12.2	12.5	12.2	12.7	11.0	-1.7	
Female	—	1.6	0.7	1.7	1.2	—	2.0	2.3	2.6	1.8	1.1	1.2	1.5	1.3	1.3	1.6	1.2	1.0	1.6	1.9	1.5	-0.4	
College Plans:																							
None or under 4 years	—	14.5	15.5	13.1	9.6	—	18.0	14.9	15.8	18.7	17.6	16.9	14.3	10.5	15.8	13.0	10.8	12.8	11.9	15.2	13.4	-1.8	
Complete 4 years	—	9.8	9.0	8.8	7.7	—	9.4	9.4	9.3	9.9	7.6	7.4	7.1	7.6	5.4	6.1	4.8	4.8	4.9	5.4	4.1	-1.3	
Region:																							
Northeast	—	9.5	7.3	5.9	5.0	—	8.2	9.6	12.0	9.6	8.4	6.9	2.6	4.3	5.3	5.4	5.3	6.3	5.1	8.0	5.3	-2.7	
North Central	—	13.5	11.3	10.8	8.3	—	12.3	13.6	14.7	16.7	12.6	13.4	11.8	8.9	11.1	9.9	7.8	5.7	7.4	10.5	7.0	-3.5	
South	—	12.2	13.7	12.1	9.8	—	12.5	11.1	9.7	11.9	9.2	9.0	10.5	10.7	7.3	8.5	7.9	7.9	8.4	7.5	7.5	-0.1	
West	—	9.3	11.7	10.9	9.1	—	11.1	7.0	8.5	8.6	8.5	9.1	7.3	7.0	6.3	6.2	3.9	6.0	4.3	4.0	3.4	-0.6	
Population Density:																							
Large MSA	—	9.0	6.4	7.7	6.8	—	5.9	7.1	7.5	12.5	8.6	6.5	4.7	4.9	4.2	4.4	3.4	3.4	3.8	4.3	4.8	+0.4	
Other MSA	—	8.9	10.5	8.5	7.6	—	11.1	9.9	11.3	9.5	7.4	7.4	7.7	8.5	7.9	8.0	5.7	6.9	5.6	7.8	4.6	-3.2	
Non-MSA	—	17.1	17.5	16.1	11.7	—	16.9	15.0	14.7	16.7	15.3	17.9	16.1	11.7	11.4	11.5	11.9	10.4	12.1	11.3	10.9	-0.4	
Parental Education: ^b																							
1.0-2.0 (Low)	—	8.6	11.7	10.7	5.3	—	14.9	7.0	12.3	9.8	6.3	5.8	6.1	5.4	4.3	6.3	4.1	9.3	6.1	5.3	4.9	-0.4	
2.5-3.0	—	14.4	11.5	10.7	7.0	—	12.4	11.6	12.9	11.5	10.4	10.7	9.0	9.1	9.9	7.5	5.6	5.9	8.8	9.7	8.0	-1.7	
3.5-4.0	—	11.5	12.1	10.6	9.0	—	12.4	10.8	9.8	12.8	9.1	10.4	9.8	8.8	8.9	8.6	7.4	6.5	4.6	7.8	6.4	-1.4	
4.5-5.0	—	10.4	11.7	11.8	10.2	—	8.0	13.3	11.1	12.8	11.4	9.1	9.6	8.5	6.2	6.2	7.3	7.6	7.9	8.0	6.1	-1.8	
5.5-6.0 (High)	—	7.7	8.1	7.2	8.4	—	10.6	7.8	10.2	11.6	8.1	9.9	7.4	7.9	5.7	10.3	4.6	6.2	5.4	3.7	3.5	-0.2	
Race (2-year average): ^c																							
White	—	—	12.9	12.0	10.6	—	—	13.8	13.8	13.0	13.0	12.2	11.8	11.0	10.5	10.3	9.7	8.5	8.2	8.7	8.8	+0.1	
Black	—	—	2.1	4.5	4.5	—	—	2.0	1.9	2.1	2.7	2.2	1.4	1.5	1.5	1.2	1.0	1.0	0.6	0.3	0.5	+0.2	
Hispanic	—	—	4.4	5.2	5.1	—	—	6.0	5.4	7.6	8.1	5.3	4.3	3.9	3.8	3.2	2.6	3.1	3.9	4.9	3.8	-1.1	

Source: The Monitoring the Future Study, the University of Michigan.

Notes: Level of significance of difference between the two most recent classes: s = .05, ss = .01, sss = .001. '—' indicates data not available. Any apparent inconsistency between the change estimate and the prevalence of use estimates for the two most recent classes is due to rounding error. Data based on one of six forms; N is one-sixth of N indicated.

Caution: Limited sample sizes (see "Notes" above). Use caution in interpreting subgroup trends.

^aPrevalence of smokeless tobacco use was not asked of 12th graders in 1990 and 1991. Prior to 1990 the prevalence of use question on smokeless tobacco was located near the end of one 12th-grade questionnaire form, whereas after 1991 the question was placed earlier and in a different form. This shift could explain the discontinuities in the data.

^bParental education is an average score of mother's education and father's education. See Appendix B for details.

^cTo derive percentages for each racial subgroup, data for the specified year and the previous year have been combined to increase subgroup sample size and thus provide more stable estimates. For the data beginning in 2005, see the race/ethnicity note at the end of Appendix D.