

Dec. 16, 2015

Contact: Jared Wadley, 734-936-7819, [jwadley@umich.edu](mailto:jwadley@umich.edu)

Janice Lee, 734-647-1083, [mtfinformation@umich.edu](mailto:mtfinformation@umich.edu)

U-M has a satellite uplink TV studio and an ISDN radio line for interviews.

**EMBARGOED FOR RELEASE AT 12:01 A.M. ET WEDNESDAY, DEC. 16, 2015**

## **Teen cigarette smoking drops to historic low in 2015**

ANN ARBOR—Cigarette smoking among teens in grades 8, 10 and 12 continued a decades-long decline in 2015 and reached the lowest levels recorded since annual tracking began 41 years ago.

The percentage of students saying that they smoked at all in the prior 30 days fell for the three grades combined from 8.0 percent to 7.0 percent—a statistically significant drop.

This finding comes from the 2015 nationwide Monitoring the Future study, which annually tracks trends in substance use among 8th-, 10th- and 12th-graders. The study surveys more than 40,000 students in about 400 secondary schools each year throughout the contiguous United States and is in its 41st continuous year.

"Since the peak year in 1997, the proportion of students currently smoking has dropped by three quarters—an extremely important development for the health and longevity of this generation of Americans," said Lloyd Johnston, the principal investigator of the study.

Such a reduction can translate eventually into preventing hundreds of thousands of premature deaths as well as many serious diseases, he said. More than 400,000 Americans per year are estimated to die prematurely as a result of smoking cigarettes.

Concerted efforts to reduce youth smoking appear to be paying off. These have included increased taxes on tobacco products, restrictions on advertising and promotion, limiting where smoking is permitted, broad-based anti-smoking ad campaigns, educational programs in schools, removal of added flavoring to cigarettes (except menthol), and quit-smoking programs and products becoming more available. Increases in the price of cigarettes charged by manufacturers have also played an important role.

The study found that between 2014 and 2015 the percentage of students reporting any cigarette smoking in the prior 30 days (called 30-day prevalence) has decreased among 8th-graders from 4.0 percent to 3.6 percent, among 10th-graders from 7.2 percent to 6.3 percent, and among 12th-graders from 13.6 percent to 11.4 percent (the decline in 30-day prevalence between 2014 and 2015 is statistically significant for 12th-graders and for all three grades combined; longer-term declines across the past five years are highly statistically significant in all grades).

"While the improvements in the smoking numbers for just this one year are important, of course, the longer-term declines are much more so," Johnston said. "Since teen smoking reached a peak around 1996-1997, the levels of past 30-day smoking have fallen by nearly 80 percent among 8th- and 10th-graders, and by almost 70 percent among 12th-graders. Further, the proportional declines in daily smoking are even larger."

One important cause of these declines in current smoking is that many fewer young people today have ever started to smoke. In 1996, 49 percent of 8th-graders said they had tried cigarettes, but by 2015 only 13 percent said they had done so—a drop of almost three-quarters in smoking initiation over the past two decades.

***Perceived Availability.*** Students in 8th and 10th grades are asked how difficult they think it would be for them to get cigarettes, if they wanted them. This perceived availability has shown a substantial decline since 1996. The 8th-graders have shown the sharpest decline—from 77 percent saying they could get cigarettes "fairly easily" or "very easily" in 1996 to 47 percent by 2015. Perceived availability among 10th-graders fell from about 90 percent to 67 percent over the same interval.

"Although some real progress has been made in reducing the availability of cigarettes to those who are underage—particularly to the youngest teens—it is clear that a substantial portion still think they can get cigarettes fairly easily," Johnston said.

***Attitudes and Beliefs about Smoking.*** Nearly two thirds of 8th-graders and about three-quarters of 10th- and 12th-graders said they see a great risk of harm to the user from pack-a-day smoking.

These figures have increased substantially since the mid-1990s, when perceived risk was at its recent lowest levels. The 2015 figures were the highest ever recorded for 8th- and 10th-grade students. In 12th grade, perceived risk dropped slightly in 2015—it has hovered at around 75 percent for the past decade.

"The fact that perceived risk—an important deterrent of use—is lower among the younger students is unfortunate, since it is in those early teen years that smoking tends to begin," Johnston said.

Other attitudes toward smoking and smokers have changed in important ways, especially during much of the period of decline in cigarette use. These changes include increases in preferring to date nonsmokers (currently between 73 percent and 82 percent of teens report this preference), thinking that becoming a smoker reflects poor judgment, and believing that smoking is a dirty habit. All of these negative attitudes about smoking and smokers rose to high levels by 2007, where they remain or have dropped off slightly since then.

"Youth cigarette smoking is moving in the right direction," Johnston said. "But each new generation that comes of age needs to be warned of the dangers of cigarette smoking, or we risk returning to the high levels of smoking we have seen in the past. Further, the study now finds that many students are smoking tobacco in forms other than cigarettes, such as cigarillos."

[Tables and figures](#)

[Monitoring the Future](#)

[Related story on teens and cigarillo use](#)

[Related story on teens and e-cigarette use](#)

[Related story on teen illicit drug and alcohol use](#)

# # # # #

Monitoring the Future has been funded under a series of competing, investigator-initiated research grants from the National Institute on Drug Abuse, one of the National Institutes of Health. The lead investigators are Lloyd Johnston (principal investigator), Patrick O'Malley, Jerald Bachman, John Schulenberg and Richard Miech—all research professors at the University of Michigan's Institute for Social Research.

Surveys of nationally representative samples of American high school seniors were begun in 1975, making the class of 2015 the 41st such class surveyed. Surveys of 8th- and 10th-graders were added to the design in 1991, making the 2015 nationally representative samples the 25th such classes surveyed. The 2015 samples total 44,892 students located in 382 secondary schools. The samples are drawn separately at each grade level to be representative of students in that grade in public and private secondary schools across the coterminous United States.

The findings summarized here will be published in January in a forthcoming volume: Johnston, L. D., O'Malley, P. M., Miech, R.A., Bachman, J. G., & Schulenberg, J. E. (2016). *Monitoring the Future national results on adolescent drug use: Overview of key findings, 2015*. Ann Arbor, Mich.: Institute for Social Research, the University of Michigan. The content presented here is solely the responsibility of the authors and does not necessarily represent the official views of the National Institute on Drug Abuse, or the National Institutes of Health.

## 2015 Monitoring the Future Study Cigarette Press Release Tables

<u>Table Number</u>	<u>Table Title</u>
1	Trends in Prevalence of Use of Cigarettes in Grades 8, 10, and 12
2	Trends in Availability and Attitudes about Smoking 1 or More Packs of Cigarettes per Day for Grades 8, 10, and 12
3	Trends in Various Attitudes toward Cigarette Use for Grades 8, 10, and 12
4	Cigarettes: Trends in 30-Day Prevalence of Use by Subgroups in Grade 8
5	Cigarettes: Trends in 30-Day Prevalence of Use by Subgroups in Grade 10
6	Cigarettes: Trends in 30-Day Prevalence of Use by Subgroups in Grade 12

**TABLE 1**  
**Trends in Prevalence of Use of CIGARETTES in Grades 8, 10, and 12**  
 (Entries are percentages.)

	<u>1975</u>	<u>1976</u>	<u>1977</u>	<u>1978</u>	<u>1979</u>	<u>1980</u>	<u>1981</u>	<u>1982</u>	<u>1983</u>	<u>1984</u>	<u>1985</u>	<u>1986</u>	<u>1987</u>	<u>1988</u>	<u>1989</u>	<u>1990</u>	<u>1991</u>	<u>1992</u>	<u>1993</u>	<u>1994</u>
<b>Lifetime</b>																				
8th Grade	—	—	—	—	—	—	—	—	—	—	—	—	—	—	—	—	44.0	45.2	45.3	46.1
10th Grade	—	—	—	—	—	—	—	—	—	—	—	—	—	—	—	—	55.1	53.5	56.3	56.9
12th Grade	73.6	75.4	75.7	75.3	74.0	71.0	71.0	70.1	70.6	69.7	68.8	67.6	67.2	66.4	65.7	64.4	63.1	61.8	61.9	62.0
<b>30-Day</b>																				
8th Grade	—	—	—	—	—	—	—	—	—	—	—	—	—	—	—	—	14.3	15.5	16.7	18.6
10th Grade	—	—	—	—	—	—	—	—	—	—	—	—	—	—	—	—	20.8	21.5	24.7	25.4
12th Grade	36.7	38.8	38.4	36.7	34.4	30.5	29.4	30.0	30.3	29.3	30.1	29.6	29.4	28.7	28.6	29.4	28.3	27.8	29.9	31.2
<b>Daily</b>																				
8th Grade	—	—	—	—	—	—	—	—	—	—	—	—	—	—	—	—	7.2	7.0	8.3	8.8
10th Grade	—	—	—	—	—	—	—	—	—	—	—	—	—	—	—	—	12.6	12.3	14.2	14.6
12th Grade	26.9	28.8	28.8	27.5	25.4	21.3	20.3	21.1	21.2	18.7	19.5	18.7	18.7	18.1	18.9	19.1	18.5	17.2	19.0	19.4
<b>1/2 Pack+ per Day</b>																				
8th Grade	—	—	—	—	—	—	—	—	—	—	—	—	—	—	—	—	3.1	2.9	3.5	3.6
10th Grade	—	—	—	—	—	—	—	—	—	—	—	—	—	—	—	—	6.5	6.0	7.0	7.6
12th Grade	17.9	19.2	19.4	18.8	16.5	14.3	13.5	14.2	13.8	12.3	12.5	11.4	11.4	10.6	11.2	11.3	10.7	10.0	10.9	11.2
<b>Approximate Ns</b>																				
8th Grade	—	—	—	—	—	—	—	—	—	—	—	—	—	—	—	—	17,500	18,600	18,300	17,300
10th Grade	—	—	—	—	—	—	—	—	—	—	—	—	—	—	—	—	14,800	14,800	15,300	15,800
12th Grade	9,400	15,400	17,100	17,800	15,500	15,900	17,500	17,700	16,300	15,900	16,000	15,200	16,300	16,300	16,700	15,200	15,000	15,800	16,300	15,400

→  
(Years cont.)

(Table continued on next page.)

**TABLE 1 (cont.)**  
**Trends in Prevalence of Use of CIGARETTES in Grades 8, 10, and 12**  
(Entries are percentages.)

	1995	1996	1997	1998	1999	2000	2001	2002	2003	2004	2005	2006	2007	2008	2009	2010	2011	2012	2013	2014	2015	2014– 2015 change
<b>Lifetime</b>																						
8th Grade	46.4	49.2	47.3	45.7	44.1	40.5	36.6	31.4	28.4	27.9	25.9	24.6	22.1	20.5	20.1	20.0	18.4	15.5	14.8	13.5	13.3	-0.2
10th Grade	57.6	61.2	60.2	57.7	57.6	55.1	52.8	47.4	43.0	40.7	38.9	36.1	34.6	31.7	32.7	33.0	30.4	27.7	25.7	22.6	19.9	-2.6 s
12th Grade	64.2	63.5	65.4	65.3	64.6	62.5	61.0	57.2	53.7	52.8	50.0	47.1	46.2	44.7	43.6	42.2	40.0	39.5	38.1	34.4	31.1	-3.3 ss
<b>30-Day</b>																						
8th Grade	19.1	21.0	19.4	19.1	17.5	14.6	12.2	10.7	10.2	9.2	9.3	8.7	7.1	6.8	6.5	7.1	6.1	4.9	4.5	4.0	3.6	-0.4
10th Grade	27.9	30.4	29.8	27.6	25.7	23.9	21.3	17.7	16.7	16.0	14.9	14.5	14.0	12.3	13.1	13.6	11.8	10.8	9.1	7.2	6.3	-0.8
12th Grade	33.5	34.0	36.5	35.1	34.6	31.4	29.5	26.7	24.4	25.0	23.2	21.6	21.6	20.4	20.1	19.2	18.7	17.1	16.3	13.6	11.4	-2.2 ss
<b>Daily</b>																						
8th Grade	9.3	10.4	9.0	8.8	8.1	7.4	5.5	5.1	4.5	4.4	4.0	4.0	3.0	3.1	2.7	2.9	2.4	1.9	1.8	1.4	1.3	-0.1
10th Grade	16.3	18.3	18.0	15.8	15.9	14.0	12.2	10.1	8.9	8.3	7.5	7.6	7.2	5.9	6.3	6.6	5.5	5.0	4.4	3.2	3.0	-0.2
12th Grade	21.6	22.2	24.6	22.4	23.1	20.6	19.0	16.9	15.8	15.6	13.6	12.2	12.3	11.4	11.2	10.7	10.3	9.3	8.5	6.7	5.5	-1.2 s
<b>1/2 Pack+ per Day</b>																						
8th Grade	3.4	4.3	3.5	3.6	3.3	2.8	2.3	2.1	1.8	1.7	1.7	1.5	1.1	1.2	1.0	0.9	0.7	0.6	0.7	0.5	0.4	-0.1
10th Grade	8.3	9.4	8.6	7.9	7.6	6.2	5.5	4.4	4.1	3.3	3.1	3.3	2.7	2.0	2.4	2.4	1.9	1.5	1.5	1.2	1.0	-0.2
12th Grade	12.4	13.0	14.3	12.6	13.2	11.3	10.3	9.1	8.4	8.0	6.9	5.9	5.7	5.4	5.0	4.7	4.3	4.0	3.4	2.6	2.1	-0.5
<b>Approximate Ns</b>																						
8th Grade	17,500	17,800	18,600	18,100	16,700	16,700	16,200	15,100	16,500	17,000	16,800	16,500	16,100	15,700	15,000	15,300	16,000	15,100	14,600	14,600	14,400	
10th Grade	17,000	15,600	15,500	15,000	13,600	14,300	14,000	14,300	15,800	16,400	16,200	16,200	16,100	15,100	15,900	15,200	14,900	15,000	12,900	13,000	15,600	
12th Grade	15,400	14,300	15,400	15,200	13,600	12,800	12,800	12,900	14,600	14,600	14,700	14,200	14,500	14,000	13,700	14,400	14,100	13,700	12,600	12,400	12,900	

Source. The Monitoring the Future study, the University of Michigan.

Notes. Level of significance of difference between the two most recent classes: s = .05, ss = .01, sss = .001. '—' indicates data not available.

Any apparent inconsistency between the change estimate and the prevalence estimates for the two most recent years is due to rounding.

**TABLE 2**  
**Trends in Availability and Attitudes about Smoking 1 or More Packs**  
**of Cigarettes per Day for Grades 8, 10, and 12**

(Entries are percentages.)

	1975	1976	1977	1978	1979	1980	1981	1982	1983	1984	1985	1986	1987	1988	1989	1990	1991	1992	1993	1994
<b>Perceived Risk <sup>a</sup></b>																				
8th Grade	—	—	—	—	—	—	—	—	—	—	—	—	—	—	—	—	51.6	50.8	52.7	50.8
10th Grade	—	—	—	—	—	—	—	—	—	—	—	—	—	—	—	—	60.3	59.3	60.7	59.0
12th Grade	51.3	56.4	58.4	59.0	63.0	63.7	63.3	60.5	61.2	63.8	66.5	66.0	68.6	68.0	67.2	68.2	69.4	69.2	69.5	67.6
<b>Disapproval <sup>b</sup></b>																				
8th Grade	—	—	—	—	—	—	—	—	—	—	—	—	—	—	—	—	82.8	82.3	80.6	78.4
10th Grade	—	—	—	—	—	—	—	—	—	—	—	—	—	—	—	—	79.4	77.8	76.5	73.9
12th Grade	67.5	65.9	66.4	67.0	70.3	70.8	69.9	69.4	70.8	73.0	72.3	75.4	74.3	73.1	72.4	72.8	71.4	73.5	70.6	69.8
<b>Availability <sup>c</sup></b>																				
8th Grade	—	—	—	—	—	—	—	—	—	—	—	—	—	—	—	—	—	77.8	75.5	76.1
10th Grade	—	—	—	—	—	—	—	—	—	—	—	—	—	—	—	—	—	89.1	89.4	90.3
<b>Approximate Ns</b>																				
8th Grade	—	—	—	—	—	—	—	—	—	—	—	—	—	—	—	—	17,500	18,600	18,300	17,300
10th Grade	—	—	—	—	—	—	—	—	—	—	—	—	—	—	—	—	14,800	14,800	15,300	15,800
12th Grade	2,800	2,900	3,100	3,800	3,300	3,200	3,600	3,600	3,300	3,300	3,300	3,000	3,300	3,300	2,800	2,600	2,600	2,700	2,800	2,600

→  
(Years cont.)

(Table continued on next page.)

**TABLE 2 (cont.)**  
**Trends in Availability and Attitudes about Smoking 1 or More Packs**  
**of Cigarettes per Day for Grades 8, 10, and 12**

(Entries are percentages.)

	1995	1996	1997	1998	1999	2000	2001	2002	2003	2004	2005	2006	2007	2008	2009	2010	2011	2012	2013	2014	2015	2014– 2015 change
<b>Perceived Risk<sup>a</sup></b>																						
8th Grade	49.8	50.4	52.6	54.3	54.8	58.8	57.1	57.5	57.7	62.4	61.5	59.4	61.1	59.8	59.1	60.9	62.5	62.6	62.4	62.1	63.0	+0.9
10th Grade	57.0	57.9	59.9	61.9	62.7	65.9	64.7	64.3	65.7	68.4	68.1	67.7	68.2	69.1	67.3	67.2	69.8	71.6	70.8	72.0	72.9	+0.9
12th Grade	65.6	68.2	68.7	70.8	70.8	73.1	73.3	74.2	72.1	74.0	76.5	77.6	77.3	74.0	74.9	75.0	77.7	78.2	78.2	78.0	75.9	-2.1
<b>Disapproval<sup>b</sup></b>																						
8th Grade	78.6	77.3	80.3	80.0	81.4	81.9	83.5	84.6	84.6	85.7	85.3	85.6	87.0	86.7	87.1	87.0	88.0	88.8	88.0	87.5	88.8	+1.3
10th Grade	73.2	71.6	73.8	75.3	76.1	76.7	78.2	80.6	81.4	82.7	84.3	83.2	84.7	85.2	84.5	83.9	85.8	86.0	86.1	88.0	88.3	+0.3
12th Grade	68.2	67.2	67.1	68.8	69.5	70.1	71.6	73.6	74.8	76.2	79.8	81.5	80.7	80.5	81.8	81.0	83.0	83.7	82.6	85.0	84.1	-1.0
<b>Availability<sup>c</sup></b>																						
8th Grade	76.4	76.9	76.0	73.6	71.5	68.7	67.7	64.3	63.1	60.3	59.1	58.0	55.6	57.4	55.3	55.5	51.9	50.7	49.9	47.2	47.0	-0.2
10th Grade	90.7	91.3	89.6	88.1	88.3	86.8	86.3	83.3	80.7	81.4	81.5	79.5	78.2	76.5	76.1	75.6	73.6	72.9	71.4	69.0	66.6	-2.4 s
<b>Approximate Ns</b>																						
8th Grade	17,500	17,800	18,600	18,100	16,700	16,700	16,200	15,100	16,500	17,000	16,800	16,500	16,100	15,700	15,000	15,300	16,000	15,100	14,600	14,600	14,400	
10th Grade	17,000	15,600	15,500	15,000	13,600	14,300	14,000	14,300	15,800	16,400	16,200	16,200	16,100	15,100	15,900	15,200	14,900	15,000	12,900	13,000	15,600	
12th Grade	2,600	2,400	2,600	2,500	2,300	2,100	2,100	2,200	2,400	2,400	2,500	2,400	2,400	2,300	2,300	2,400	2,400	2,300	2,100	2,100	2,200	

Source. The Monitoring the Future study, the University of Michigan.

Notes. Level of significance of difference between the two most recent classes: s = .05, ss = .01, sss = .001. '—' indicates data not available.

Any apparent inconsistency between the change estimate and the prevalence estimates for the two most recent years is due to rounding.

<sup>a</sup>The question text was: How much do you think people risk harming themselves (physically or in other ways) if they smoke one or more packs of cigarettes per day? Answer alternatives were: (1) No risk, (2) Slight risk, (3) Moderate risk, (4) Great risk, and (5) Can't say, drug unfamiliar. The percentage saying great risk is shown. For 8th and 10th graders: Beginning in 1999, perceived risk data based on two of four forms; N is two thirds of N indicated.

<sup>b</sup>The question text was: Do you disapprove of people smoking one or more packs of cigarettes per day? Answer alternatives were: (1) Don't disapprove, (2) Disapprove, and (3) Strongly disapprove. For 8th and 10th graders, there was another category—Can't say, drug unfamiliar—which was included in the calculation of these percentages. The percentage saying they disapprove or strongly disapprove is shown. For 8th and 10th graders: Beginning in 1999, disapproval data based on two of four forms; N is two thirds of N indicated.

<sup>c</sup>The question text was: How difficult do you think it would be for you to get cigarettes, if you wanted some? Answer alternatives were: (1) Probably impossible, (2) Very difficult, (3) Fairly difficult, (4) Fairly easy, (5) Very easy, and (8) Can't say, drug unfamiliar (included in the calculation of these percentages). The percentage saying cigarettes are fairly easy or very easy to get is shown. In 1992 only, availability data based on one of two forms; N is one half of N indicated. The question was not asked of 12th graders.



**TABLE 3**  
**Trends in Various Attitudes toward Cigarette Use for Grades 8, 10, and 12**

	Percentage who report mostly agree or agree																				2014– 2015 change					
	1991	1992	1993	1994	1995	1996	1997	1998	1999	2000	2001	2002	2003	2004	2005	2006	2007	2008	2009	2010	2011	2012	2013	2014	2015	
<b>I would prefer to date people who don't smoke</b>																										
8th Grade	77.8	76.0	75.2	74.1	73.6	70.9	72.3	74.5	76.9	77.2	79.4	80.6	79.6	81.0	81.2	81.2	82.8	82.6	81.3	81.5	81.7	83.7	80.9	80.2	81.7	+1.5
10th Grade	75.9	76.4	74.3	71.6	71.6	69.1	68.2	71.8	73.0	75.2	75.4	76.3	76.7	79.5	79.6	80.4	80.9	80.0	79.9	78.9	80.1	80.2	77.3	78.4	79.2	+0.8
12th Grade	74.0	72.3	70.4	69.0	66.0	66.0	63.9	66.0	64.4	70.0	68.5	72.3	71.8	72.0	74.8	76.7	76.6	75.2	74.9	73.3	74.7	77.5	75.4	73.7	73.1	-0.6
<b>Smoking is a dirty habit</b>																										
8th Grade	71.4	70.8	70.3	68.4	68.4	67.9	67.7	68.2	70.0	70.8	72.3	74.1	71.6	74.3	73.7	74.8	75.8	75.0	73.6	72.4	72.9	75.1	72.0	70.7	70.9	+0.2
10th Grade	70.7	71.0	69.2	67.5	68.0	66.6	65.8	68.3	68.7	70.8	70.3	71.2	70.5	71.7	72.0	73.7	72.7	72.0	72.1	71.7	71.4	71.3	69.5	69.1	70.8	+1.7
12th Grade	71.6	73.1	71.8	68.0	68.2	67.5	70.0	70.5	69.7	73.5	71.6	74.5	73.3	72.6	74.9	77.1	76.7	73.5	73.4	73.1	72.4	73.0	70.7	70.9	67.1	-3.8
<b>I think that becoming a smoker reflects poor judgment</b>																										
8th Grade	62.2	60.9	59.7	58.7	59.3	57.0	57.6	58.8	60.0	60.9	63.1	64.3	63.7	64.1	64.6	65.5	66.1	64.5	63.9	62.5	61.6	63.3	59.3	57.0	58.2	+1.1
10th Grade	57.5	59.0	57.3	54.2	53.7	52.9	50.1	53.9	54.7	56.5	55.4	59.3	56.8	58.8	59.4	61.5	60.3	60.6	59.6	59.1	57.4	57.2	54.8	52.3	54.1	+1.9
12th Grade	61.0	60.7	59.4	58.1	55.1	54.9	56.2	54.7	55.5	58.9	57.2	59.8	56.6	56.0	60.3	61.9	61.7	58.1	57.7	54.4	55.5	54.1	52.3	47.5	45.5	-2.0
<b>I strongly dislike being near people who are smoking</b>																										
8th Grade	53.8	52.1	52.9	51.1	49.7	45.7	46.6	48.5	48.7	50.1	52.2	54.0	54.4	57.0	55.7	55.4	56.8	57.9	55.9	55.2	56.9	59.0	58.6	57.4	58.3	+0.9
10th Grade	50.7	50.9	50.0	47.7	46.0	42.6	41.6	44.4	44.0	46.5	46.7	49.1	51.2	52.6	52.3	55.2	53.7	53.5	52.9	52.2	53.9	55.8	54.6	55.7	58.7	+3.0 s
12th Grade	48.9	49.4	48.6	47.4	44.2	42.3	38.3	41.0	39.3	41.3	43.3	47.4	47.6	46.5	47.8	49.7	50.2	47.9	48.7	49.1	49.5	52.4	50.7	53.2	51.1	-2.0
<b>I personally don't mind being around people who are smoking</b>																										
8th Grade	29.5	31.1	31.1	32.8	34.2	37.8	34.8	34.7	32.9	31.6	30.7	29.1	27.8	27.6	26.8	27.7	27.3	25.6	25.8	27.1	25.1	25.0	24.7	23.2	22.9	-0.3
10th Grade	33.1	35.0	35.1	36.8	38.5	42.8	41.1	39.7	38.8	38.1	35.5	34.7	32.2	30.0	30.4	30.8	30.4	29.2	30.4	30.3	28.6	28.9	28.9	26.9	24.3	-2.6 s
12th Grade	33.1	34.5	33.0	35.5	37.0	39.1	41.8	38.6	41.3	39.6	39.7	35.0	33.5	32.7	35.1	32.0	31.3	31.5	31.6	32.4	31.4	30.0	30.8	27.6	28.2	+0.6
<b>The harmful effects of cigarettes have been exaggerated</b>																										
8th Grade	19.9	21.8	22.4	24.4	23.1	25.3	22.4	23.8	22.7	21.6	21.4	22.0	20.5	22.1	20.4	21.1	20.8	20.9	21.2	22.3	20.5	21.4	21.2	20.8	19.6	-1.2
10th Grade	16.4	17.9	18.8	18.9	19.3	20.0	19.5	20.1	19.3	18.8	17.3	18.0	19.5	17.8	17.5	17.4	18.3	18.5	18.6	17.8	18.1	18.3	19.2	18.1	16.5	-1.6
12th Grade	13.8	13.0	13.6	14.9	14.4	12.8	14.0	13.4	14.5	16.8	15.8	12.7	13.1	13.1	13.1	14.1	14.2	14.5	15.0	12.8	13.8	14.4	14.0	12.8	11.9	-0.9
<b>Smokers know how to enjoy life more than nonsmokers</b>																										
8th Grade	4.9	5.0	5.4	6.3	5.9	6.7	5.4	5.8	6.1	5.4	5.5	5.2	5.3	5.9	5.4	5.7	5.1	5.2	5.6	6.7	5.6	5.8	6.0	6.5	5.6	-0.9
10th Grade	3.5	3.9	4.2	4.1	4.2	4.6	3.7	4.7	4.2	4.7	4.5	4.1	4.8	4.4	4.0	4.4	4.2	5.0	5.2	5.7	5.3	5.5	5.8	5.8	5.3	-0.4
12th Grade	3.6	3.3	3.5	3.8	4.0	3.5	3.2	3.8	4.3	3.7	5.5	4.1	3.5	3.5	3.4	3.8	3.2	4.2	3.9	8.1	7.7	3.9	5.7	5.1	5.8	+0.7

Source. The Monitoring the Future study, the University of Michigan.

Notes. For 8th graders: Ns range from 6,249 to 8,005. For 10th graders: Ns range from 6,135 to 7,807. For 12th graders: Ns range from 1,795 to 3,112.

**TABLE 4**  
**CIGARETTES: Trends in 30-Day Prevalence of Use by Subgroups in Grade 8**

	Percentage who used in last 30 days																				2014– 2015 change					
	1991	1992	1993	1994	1995	1996	1997	1998	1999	2000	2001	2002	2003	2004	2005	2006	2007	2008	2009	2010		2011	2012	2013	2014	2015
<i>Approximate weighted N =</i>	17,500	18,600	18,300	17,300	17,500	17,800	18,600	18,100	16,700	16,700	16,200	15,100	16,500	17,000	16,800	16,500	16,100	15,700	15,000	15,300	16,000	15,100	14,600	14,600	14,400	
Total	14.3	15.5	16.7	18.6	19.1	21.0	19.4	19.1	17.5	14.6	12.2	10.7	10.2	9.2	9.3	8.7	7.1	6.8	6.5	7.1	6.1	4.9	4.5	4.0	3.6	-0.4
Gender:																										
Male	15.5	14.9	17.2	19.3	18.8	20.6	19.1	18.0	16.7	14.3	12.2	11.0	9.6	8.3	8.7	8.1	7.5	6.7	6.7	7.4	6.2	4.6	4.0	3.5	3.3	-0.2
Female	13.1	15.9	16.3	17.9	19.0	21.1	19.5	19.8	17.7	14.7	12.0	10.4	10.6	9.9	9.7	8.9	6.4	6.7	6.0	6.8	5.7	4.9	4.7	4.2	3.7	-0.6
College Plans:																										
None or under 4 years	29.2	31.9	34.1	36.6	36.5	39.2	40.0	40.1	40.3	34.7	30.0	29.3	27.8	25.6	26.7	23.2	23.9	21.1	19.5	22.8	18.2	17.3	15.0	13.1	11.7	-1.5
Complete 4 years	11.8	13.1	14.3	16.1	16.8	18.2	16.9	16.5	14.5	12.2	10.0	8.9	8.3	7.4	7.4	7.1	5.4	5.5	5.3	5.7	5.1	3.9	3.8	3.1	2.8	-0.3
Region:																										
Northeast	13.7	14.4	15.0	17.8	18.6	22.1	18.0	15.6	15.7	13.7	11.4	9.1	7.7	7.2	7.8	6.7	3.7	5.9	5.6	6.0	4.4	4.2	3.5	3.4	2.2	-1.2
Midwest	15.5	16.5	16.3	18.5	20.9	23.2	20.0	22.3	21.3	17.1	12.0	11.0	12.2	10.8	9.5	9.3	7.8	8.1	7.0	8.6	6.4	3.9	4.4	3.5	4.5	+1.0
South	15.7	17.0	18.2	19.5	19.4	21.1	21.0	21.1	18.7	14.7	14.3	13.0	11.7	10.3	11.6	10.9	8.6	7.7	7.7	8.5	6.8	6.9	5.8	4.6	4.0	-0.6
West	10.0	12.2	16.4	18.0	16.5	17.1	17.1	15.1	12.1	12.2	9.3	7.5	7.0	7.4	6.3	5.7	5.8	5.2	4.6	4.0	6.1	3.0	3.0	3.9	2.9	-0.9
Population Density:																										
Large MSA	12.8	15.0	14.1	15.5	16.5	19.4	15.8	16.4	12.7	12.1	9.3	7.5	7.7	7.7	6.7	6.4	4.7	5.2	4.2	4.8	4.0	3.6	2.5	2.8	2.2	-0.7
Other MSA	14.9	15.3	17.8	20.7	19.4	21.4	19.7	17.7	16.0	13.1	11.6	10.6	9.8	8.9	9.8	8.8	7.6	7.5	6.9	7.6	7.0	5.1	4.3	3.7	3.5	-0.1
Non-MSA	14.8	16.4	17.9	17.8	21.5	22.1	22.8	24.8	26.1	21.1	16.9	14.9	14.4	11.6	11.8	11.6	9.5	7.9	8.5	9.2	7.7	6.9	8.0	6.6	5.9	-0.7
Parental Education: <sup>a</sup>																										
1.0–2.0 (Low)	26.2	24.1	23.3	26.1	25.3	26.5	26.9	26.7	26.6	22.0	20.3	20.3	17.5	15.8	16.6	14.7	13.8	12.1	10.5	11.4	9.2	7.6	6.3	5.8	5.9	+0.2
2.5–3.0	16.4	16.9	19.8	20.6	22.7	24.4	22.4	23.9	23.5	19.6	16.4	14.5	14.8	12.2	13.4	12.5	10.2	8.7	8.8	10.2	9.8	7.4	6.5	6.2	4.6	-1.6
3.5–4.0	13.9	14.9	17.4	20.1	20.8	21.4	20.9	21.4	17.0	14.7	12.6	10.5	9.6	9.6	10.5	8.8	7.8	7.3	7.1	8.0	6.3	5.7	5.6	4.8	3.5	-1.3
4.5–5.0	10.1	13.3	12.5	14.9	14.9	18.4	16.2	14.2	12.3	10.2	8.3	7.8	6.7	6.7	5.9	5.5	3.9	4.7	4.4	4.9	3.9	3.0	2.4	2.6	2.5	-0.2
5.5–6.0 (High)	11.3	11.5	13.3	15.1	14.5	17.3	15.3	13.8	12.2	9.8	6.9	5.8	6.0	5.2	4.3	4.8	2.4	4.1	3.5	2.9	3.1	2.6	2.9	1.7	2.1	+0.4
Race/Ethnicity (2-year average): <sup>b</sup>																										
White	—	16.2	17.8	18.9	20.7	22.7	22.8	21.5	20.1	17.7	14.7	12.0	10.9	10.0	9.4	9.3	8.1	7.2	7.3	7.6	7.2	5.8	4.7	4.4	4.2	-0.3
African American	—	5.3	6.6	8.7	8.9	9.6	10.9	10.6	10.7	9.6	8.2	7.7	6.9	6.9	7.1	6.0	5.1	4.6	4.4	4.3	4.1	4.0	3.5	2.6	2.2	-0.4
Hispanic	—	16.7	18.3	21.3	21.6	19.6	19.1	20.1	20.5	16.6	13.0	12.8	11.9	10.1	9.0	8.8	8.0	7.0	6.5	6.7	6.9	5.5	4.0	3.5	3.0	-0.5

Source. The Monitoring the Future study, the University of Michigan.

Notes. Level of significance of difference between the two most recent classes: s = .05, ss = .01, sss = .001. '—' indicates data not available. Any apparent inconsistency between the change estimate and the prevalence estimates for the two most recent years is due to rounding. See Table S1 for the number of subgroup cases. See appendix B for definition of variables in table.

<sup>a</sup>Parental education is an average score of mother's education and father's education. See appendix B for details.

<sup>b</sup>To derive percentages for each racial subgroup, data for the specified year and the previous year have been combined to increase subgroup sample sizes and thus provide more stable estimates. See appendix B for details on how race/ethnicity is defined.

**TABLE 5**  
**CIGARETTES: Trends in 30-Day Prevalence of Use by Subgroups in Grade 10**

	Percentage who used in last 30 days																					2014– 2015 change				
	1991	1992	1993	1994	1995	1996	1997	1998	1999	2000	2001	2002	2003	2004	2005	2006	2007	2008	2009	2010	2011		2012	2013	2014	2015
Approximate weighted N =	14,800	14,800	15,300	15,800	17,000	15,600	15,500	15,000	13,600	14,300	14,000	14,300	15,800	16,400	16,200	16,200	16,100	15,100	15,900	15,200	14,900	15,000	12,900	13,000	15,600	
Total	20.8	21.5	24.7	25.4	27.9	30.4	29.8	27.6	25.7	23.9	21.3	17.7	16.7	16.0	14.9	14.5	14.0	12.3	13.1	13.6	11.8	10.8	9.1	7.2	6.3	-0.8
Gender:																										
Male	20.8	20.6	24.6	26.6	27.7	30.1	28.2	26.2	25.2	23.8	20.9	16.7	16.2	16.2	14.5	13.4	14.6	12.7	13.7	15.0	13.4	12.0	10.5	7.7	6.1	-1.6 s
Female	20.7	22.2	24.5	23.9	27.9	30.8	31.1	29.1	25.8	23.6	21.5	18.6	17.0	15.7	15.1	15.5	13.3	11.9	12.5	12.1	10.0	9.6	7.5	6.6	6.3	-0.4
College Plans:																										
None or under 4 years	36.5	35.0	41.9	42.2	46.3	46.2	47.2	45.2	44.0	38.6	38.1	33.3	33.0	33.1	29.4	32.7	30.1	30.1	29.0	32.5	28.5	27.6	23.3	19.4	17.6	-1.8
Complete 4 years	17.3	18.6	21.0	21.7	24.7	27.8	26.8	24.5	22.7	21.5	18.5	15.1	14.0	13.6	12.9	12.1	11.8	10.0	11.3	11.3	9.9	9.0	7.4	5.8	5.1	-0.8
Region:																										
Northeast	22.4	21.9	27.1	24.5	27.8	31.7	29.3	30.1	28.0	23.9	18.1	15.9	16.6	16.6	14.9	11.8	13.1	10.1	11.1	12.1	12.2	10.9	7.2	6.7	6.1	-0.7
Midwest	22.9	24.3	26.0	28.8	30.1	32.5	31.7	29.5	30.2	27.1	24.2	19.2	18.4	14.6	16.2	18.1	17.1	14.5	12.9	14.5	11.8	9.7	9.3	8.0	7.0	-1.1
South	21.2	19.8	24.0	25.7	30.8	33.4	32.2	29.8	26.3	25.5	23.5	19.6	18.2	20.4	16.4	15.6	14.4	14.0	16.7	15.4	13.8	13.6	11.8	7.7	7.0	-0.7
West	16.7	20.2	21.2	20.1	19.6	20.8	23.2	19.6	17.5	16.8	15.0	14.1	12.5	10.9	10.9	10.9	11.1	9.6	10.1	11.1	8.5	7.6	6.9	5.8	4.7	-1.1
Population Density:																										
Large MSA	19.7	21.6	22.5	22.3	23.3	26.2	26.6	22.5	22.9	23.1	17.3	14.2	13.1	12.0	11.7	11.5	12.1	10.3	11.4	11.1	9.5	8.4	5.8	5.9	4.9	-1.0
Other MSA	20.3	20.3	23.8	26.3	28.9	31.1	28.9	26.6	25.0	21.3	20.5	17.6	16.6	16.6	14.7	13.3	13.9	12.3	13.0	13.5	11.5	10.2	9.5	6.0	5.7	-0.3
Non-MSA	22.7	23.7	28.2	26.7	31.3	33.9	34.9	35.7	30.4	29.4	27.6	22.6	22.4	20.4	19.8	22.4	17.2	15.4	16.1	17.5	15.7	15.4	13.0	12.3	10.4	-1.9
Parental Education: <sup>a</sup>																										
1.0–2.0 (Low)	23.5	28.4	29.5	26.4	30.9	28.7	28.2	28.0	30.5	29.3	22.5	21.4	23.4	19.3	16.4	20.4	17.5	15.7	18.2	18.8	14.6	15.4	12.8	9.7	9.3	-0.4
2.5–3.0	24.1	23.3	28.0	29.1	33.2	33.8	33.2	33.0	29.6	26.8	25.7	22.4	21.2	19.9	19.7	19.7	18.4	15.8	16.5	18.6	16.2	14.4	13.6	9.1	8.7	-0.4
3.5–4.0	20.4	20.6	24.8	26.0	27.8	31.6	30.9	27.3	26.0	25.3	21.1	17.4	16.2	17.8	15.7	15.5	14.7	13.9	13.8	15.1	12.7	11.2	10.2	8.4	7.8	-0.6
4.5–5.0	18.5	19.5	20.1	22.6	25.9	28.7	28.5	25.7	22.4	21.2	18.9	15.1	13.4	12.6	12.5	10.8	11.3	9.6	10.9	10.0	8.6	9.6	6.0	5.2	5.0	-0.3
5.5–6.0 (High)	18.5	18.9	21.4	20.7	21.8	27.8	24.6	22.5	21.4	19.1	17.1	12.7	11.6	10.8	10.8	10.0	9.7	7.8	8.9	7.7	8.0	7.1	4.9	4.9	3.3	-1.5
Race/Ethnicity (2-year average): <sup>b</sup>																										
White	—	24.1	26.0	27.8	29.7	32.9	34.4	33.2	30.8	28.2	25.7	22.4	20.0	18.7	17.6	16.6	16.2	15.1	14.4	14.7	14.3	12.9	11.4	9.5	7.8	-1.6 ss
African American	—	6.6	7.5	9.8	11.5	12.2	12.8	13.7	12.5	11.1	11.1	9.8	8.9	9.2	8.7	8.0	7.1	6.5	6.8	6.7	7.1	6.7	5.3	4.2	3.8	-0.4
Hispanic	—	18.3	20.5	19.4	21.4	23.7	23.0	21.3	21.1	19.6	16.8	14.3	13.2	13.9	13.5	12.1	10.5	11.1	12.1	12.2	10.5	8.3	8.3	6.8	5.3	-1.6

Source. The Monitoring the Future study, the University of Michigan.

Notes. Level of significance of difference between the two most recent classes: s = .05, ss = .01, sss = .001. '—' indicates data not available. Any apparent inconsistency between the change estimate and the prevalence estimates for the two most recent years is due to rounding. See Table S2 for the number of subgroup cases. See appendix B for definition of variables in table.

<sup>a</sup>Parental education is an average score of mother's education and father's education. See appendix B for details.

<sup>b</sup>To derive percentages for each racial subgroup, data for the specified year and the previous year have been combined to increase subgroup sample sizes and thus provide more stable estimates. See appendix B for details on how race/ethnicity is defined.

**TABLE 6**  
**CIGARETTES: Trends in 30-Day Prevalence of Use by Subgroups in Grade 12**

	Percentage who used in last 30 days																			
	<u>1975</u>	<u>1976</u>	<u>1977</u>	<u>1978</u>	<u>1979</u>	<u>1980</u>	<u>1981</u>	<u>1982</u>	<u>1983</u>	<u>1984</u>	<u>1985</u>	<u>1986</u>	<u>1987</u>	<u>1988</u>	<u>1989</u>	<u>1990</u>	<u>1991</u>	<u>1992</u>	<u>1993</u>	<u>1994</u>
<i>Approximate weighted N =</i>	<i>9,400</i>	<i>15,400</i>	<i>17,100</i>	<i>17,800</i>	<i>15,500</i>	<i>15,900</i>	<i>17,500</i>	<i>17,700</i>	<i>16,300</i>	<i>15,900</i>	<i>16,000</i>	<i>15,200</i>	<i>16,300</i>	<i>16,300</i>	<i>16,700</i>	<i>15,200</i>	<i>15,000</i>	<i>15,800</i>	<i>16,300</i>	<i>15,400</i>
Total	36.7	38.8	38.4	36.7	34.4	30.5	29.4	30.0	30.3	29.3	30.1	29.6	29.4	28.7	28.6	29.4	28.3	27.8	29.9	31.2
Gender:																				
Male	37.2	37.7	36.6	34.5	31.2	26.8	26.5	26.8	28.0	25.9	28.2	27.9	27.0	28.0	27.7	29.1	29.0	29.2	30.7	32.9
Female	35.9	39.1	39.6	38.1	37.1	33.4	31.6	32.6	31.6	31.9	31.4	30.6	31.4	28.9	29.0	29.2	27.5	26.1	28.7	29.2
College Plans:																				
None or under 4 years	—	46.3	46.2	44.6	43.0	39.6	38.1	38.7	38.0	37.9	40.5	38.5	39.7	37.5	38.0	37.5	38.1	38.6	37.3	40.9
Complete 4 years	—	29.8	29.4	27.4	26.0	22.3	22.3	22.1	23.3	22.7	22.8	24.0	24.3	24.4	24.1	25.4	24.2	23.8	27.3	28.0
Region:																				
Northeast	40.1	41.8	43.0	40.6	37.0	34.1	31.5	32.1	34.6	33.5	34.2	35.2	34.1	31.2	29.4	31.9	30.5	29.6	34.2	33.2
Midwest	39.5	41.3	40.5	39.0	36.6	31.5	32.4	33.5	33.2	31.4	34.1	32.5	31.7	31.1	34.9	34.0	34.6	31.7	33.2	36.2
South	36.2	39.1	37.6	35.7	35.4	31.8	28.9	29.4	28.7	28.6	25.6	26.1	26.0	28.0	26.4	26.1	25.4	26.4	29.0	30.7
West	26.3	28.3	27.7	27.3	24.8	21.2	21.8	20.4	21.8	22.9	26.3	23.3	26.6	23.9	22.7	25.1	23.2	22.8	22.9	24.0
Population Density:																				
Large MSA	39.7	40.4	40.9	37.5	33.4	31.2	30.6	32.1	30.8	31.3	31.9	30.8	29.3	26.9	25.9	27.9	26.2	25.6	29.5	29.0
Other MSA	35.1	35.9	36.1	34.3	33.5	29.7	27.4	27.8	29.1	28.2	28.5	28.0	28.2	28.3	28.2	29.6	29.3	26.9	29.8	31.1
Non-MSA	36.7	40.9	39.2	39.4	36.4	30.9	30.9	31.2	31.5	29.3	30.8	31.0	31.8	31.4	32.2	30.4	28.6	31.5	30.3	33.8
Parental Education: <sup>a</sup>																				
1.0–2.0 (Low)	37.2	43.2	39.6	38.1	38.1	32.7	32.5	32.6	32.7	33.6	32.3	28.6	28.8	28.1	25.4	26.3	31.3	27.1	26.5	26.2
2.5–3.0	37.0	41.2	40.8	39.3	35.9	34.2	31.7	32.0	32.2	31.8	32.3	32.3	31.4	29.9	30.8	30.8	28.7	30.3	30.4	32.8
3.5–4.0	31.9	35.3	37.3	34.0	33.3	28.0	28.2	29.0	28.0	28.1	29.7	29.7	28.8	27.8	29.4	29.3	28.4	27.8	29.9	31.4
4.5–5.0	32.3	35.0	33.0	32.6	30.1	25.7	26.0	25.5	27.8	25.2	27.7	26.4	27.6	28.6	27.0	29.1	26.9	25.8	30.1	32.0
5.5–6.0 (High)	26.8	30.8	32.8	31.9	29.6	24.0	22.5	25.1	25.5	23.7	22.6	26.7	29.3	27.8	26.3	28.6	27.1	25.5	30.5	30.4
Race/Ethnicity (2-year average): <sup>b</sup>																				
White	—	—	38.3	37.6	36.0	33.0	30.5	30.7	31.3	31.2	31.3	31.9	32.1	32.2	32.2	32.3	32.2	31.8	33.2	35.2
African American	—	—	36.7	32.7	30.2	26.8	23.7	21.8	21.2	19.3	18.1	16.9	14.2	13.3	12.6	12.2	10.6	8.7	9.5	10.9
Hispanic	—	—	35.7	32.8	26.8	22.6	23.2	24.7	24.7	25.3	25.5	23.7	22.7	21.9	20.6	21.7	24.0	25.0	24.2	23.6

→  
(Years cont.)

(Table continued on next page.)

**TABLE 6 (cont.)**  
**CIGARETTES: Trends in 30-Day Prevalence of Use by Subgroups in Grade 12**

	Percentage who used in last 30 days																				2014– 2015		
	<u>1995</u>	<u>1996</u>	<u>1997</u>	<u>1998</u>	<u>1999</u>	<u>2000</u>	<u>2001</u>	<u>2002</u>	<u>2003</u>	<u>2004</u>	<u>2005</u>	<u>2006</u>	<u>2007</u>	<u>2008</u>	<u>2009</u>	<u>2010</u>	<u>2011</u>	<u>2012</u>	<u>2013</u>	<u>2014</u>	<u>2015</u>	change	
Approximate weighted N =	15,400	14,300	15,400	15,200	13,600	12,800	12,800	12,900	14,600	14,600	14,700	14,200	14,500	14,000	13,700	14,400	14,100	13,700	12,600	12,400	12,900		
Total	33.5	34.0	36.5	35.1	34.6	31.4	29.5	26.7	24.4	25.0	23.2	21.6	21.6	20.4	20.1	19.2	18.7	17.1	16.3	13.6	11.4	-2.2	ss
Gender:																							
Male	34.5	34.9	37.3	36.3	35.4	32.8	29.7	27.4	26.2	25.3	24.8	22.4	23.1	21.5	22.1	21.9	21.5	19.3	18.4	15.2	13.0	-2.2	
Female	32.0	32.4	35.2	33.3	33.5	29.7	28.7	25.5	22.1	24.1	20.7	20.1	19.6	19.1	17.6	15.7	15.1	14.5	13.2	11.6	9.1	-2.5	ss
College Plans:																							
None or under 4 years	43.5	45.0	45.7	46.7	44.9	43.6	40.8	37.5	36.2	36.8	34.8	32.9	32.4	32.4	31.2	31.2	32.2	27.9	28.9	25.3	21.9	-3.5	
Complete 4 years	29.9	30.8	33.1	31.3	31.4	27.3	25.9	23.6	20.8	21.6	20.0	18.6	19.0	17.6	17.3	16.3	15.6	14.7	13.0	10.8	8.9	-1.9	ss
Region:																							
Northeast	34.4	38.5	40.6	35.9	34.2	33.1	30.3	27.3	25.0	25.9	22.0	23.1	23.8	19.7	18.9	18.2	17.8	18.8	17.0	11.7	10.8	-0.9	
Midwest	37.8	37.7	39.3	40.0	37.8	35.6	35.9	31.7	27.3	28.3	26.8	23.6	24.7	22.1	25.7	21.5	21.8	21.0	16.5	13.8	12.7	-1.2	
South	33.5	33.2	35.0	34.3	36.2	29.6	25.9	27.2	24.3	24.6	24.6	23.2	21.9	22.4	20.0	20.5	18.4	15.6	18.6	15.4	12.5	-2.9	s
West	26.5	24.4	30.5	29.1	27.6	28.1	25.2	19.4	20.7	20.1	17.5	15.0	15.8	15.8	14.7	15.3	16.4	13.9	12.1	11.9	8.6	-3.3	s
Population Density:																							
Large MSA	33.9	32.1	34.9	32.9	30.0	27.4	27.3	24.8	18.9	20.8	20.8	20.7	19.9	18.8	17.7	18.7	17.2	15.8	14.5	11.7	9.3	-2.4	s
Other MSA	31.7	32.6	35.7	34.2	35.0	31.5	28.2	26.2	25.1	26.3	22.6	20.3	20.8	19.5	19.1	17.9	18.1	15.6	15.5	12.9	10.5	-2.4	s
Non-MSA	36.2	38.2	40.0	39.7	38.7	36.3	34.3	30.1	30.4	27.6	27.4	25.3	25.9	24.3	25.5	23.1	22.3	23.1	20.9	17.8	17.0	-0.8	
Parental Education: <sup>a</sup>																							
1.0–2.0 (Low)	31.2	31.5	31.2	32.3	33.0	31.3	24.8	20.9	23.5	21.0	19.1	21.1	20.5	18.5	19.9	17.0	18.2	17.0	18.2	14.8	12.9	-1.9	
2.5–3.0	35.0	35.5	36.5	36.0	37.3	32.2	31.5	28.9	27.0	28.7	27.3	24.7	24.7	22.4	23.2	21.6	22.4	19.0	18.2	16.1	13.9	-2.2	
3.5–4.0	33.2	33.2	35.6	36.7	35.0	32.8	30.3	28.6	24.3	26.3	24.8	22.9	21.6	21.3	21.0	20.9	19.6	20.1	18.5	14.2	12.2	-2.0	
4.5–5.0	32.6	34.5	37.5	34.2	32.4	30.2	29.3	25.0	22.6	23.8	21.8	19.2	20.5	18.6	18.0	17.5	15.9	15.7	14.1	12.0	9.7	-2.2	s
5.5–6.0 (High)	34.0	32.9	38.5	33.1	34.4	27.4	25.0	25.3	21.0	19.9	18.0	17.4	18.4	19.2	15.3	12.8	14.3	11.2	9.5	9.4	7.5	-2.0	
Race/Ethnicity (2-year average): <sup>b</sup>																							
White	36.6	38.1	40.7	41.7	40.1	37.9	35.3	32.5	29.4	28.2	27.6	25.9	24.9	24.7	23.9	22.9	22.2	21.2	19.4	17.5	15.0	-2.6	sss
African American	12.9	14.2	14.3	14.9	14.9	14.3	13.3	12.1	10.0	10.1	10.7	10.5	10.8	10.3	9.8	10.1	9.7	8.6	9.6	9.0	6.9	-2.1	ss
Hispanic	25.1	25.4	25.9	26.6	27.3	27.7	23.8	21.3	19.0	18.5	17.1	16.0	15.3	15.0	15.7	15.0	14.3	13.2	12.4	11.4	9.6	-1.7	s

Source: The Monitoring the Future study, the University of Michigan.

Notes: Level of significance of difference between the two most recent classes: s = .05, ss = .01, sss = .001. '—' indicates data not available. Any apparent inconsistency between the change estimate and the prevalence estimates for the two most recent years is due to rounding. See Table S3 for the number of subgroup cases. See appendix B for definition of variables in table.

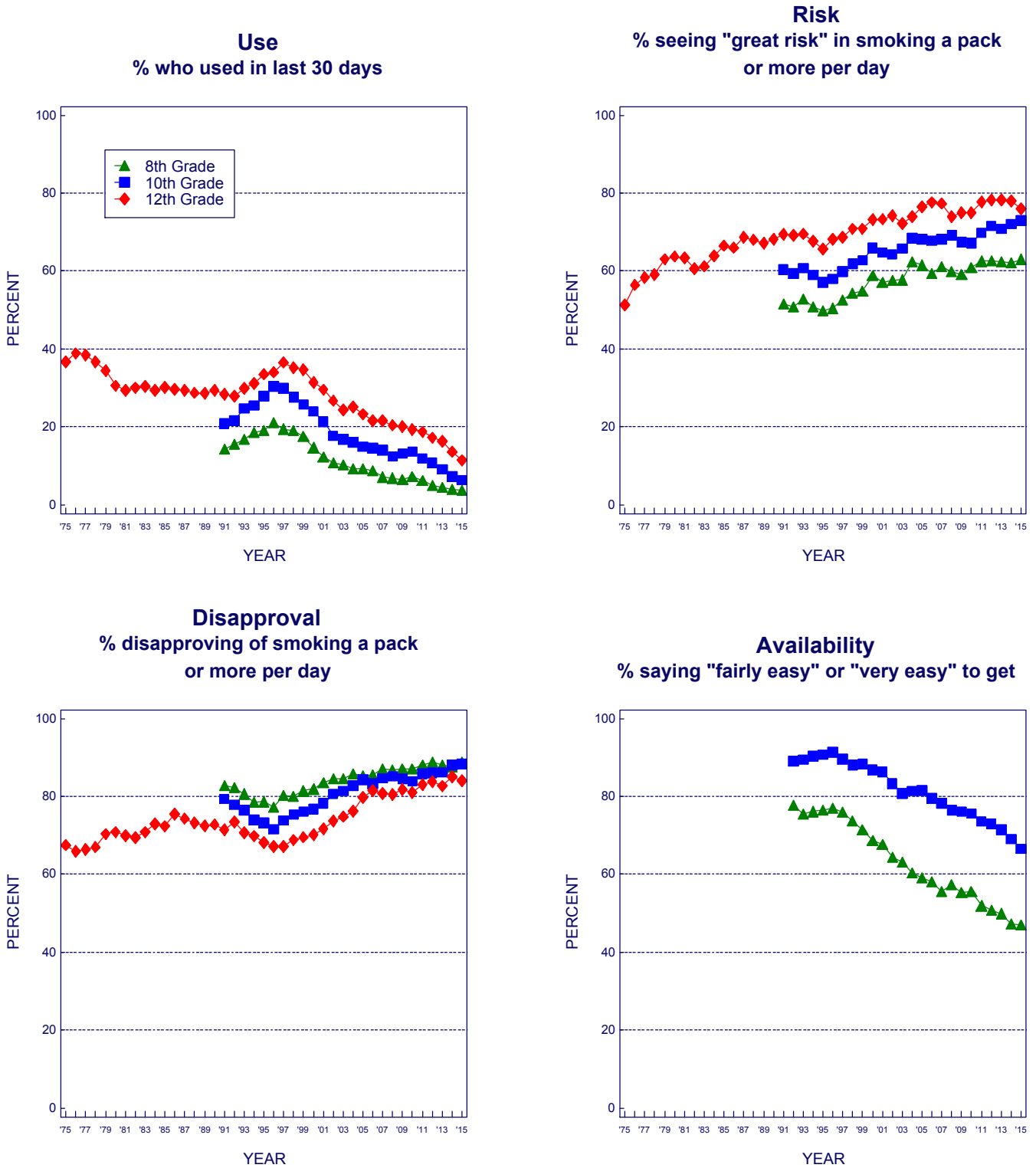
<sup>a</sup>Parental education is an average score of mother's education and father's education. See appendix B for details.

<sup>b</sup>To derive percentages for each racial subgroup, data for the specified year and the previous year have been combined to increase subgroup sample sizes and thus provide more stable estimates. See appendix B for details on how race/ethnicity is defined.

**FIGURE 1**

**Cigarettes: Trends in 30-Day Use, Risk, Disapproval, and Availability**

Grades 8, 10, and 12



Source. The Monitoring the Future study, the University of Michigan.