

January 25, 1992 (16)  
Contact: Terry Gallagher  
Phone: (313) 747-1847

---

Most forms of drug use decline among American high school and college students, U-M survey reports. Smoking remains stable. Steroid use down. Rates are high in 8th and 10th grades.

---

FOR RELEASE AT 2 P.M. MONDAY, JANUARY 27, 1992

EDITORS: Results of this survey will be presented at 2 p.m. Monday (Jan. 27) at a news conference at the Old Executive Office Building in Washington, D.C. Lloyd D. Johnston, principal investigator of the study, will join Dr. Louis W. Sullivan, secretary of the Department of Health and Human Services; Bob Martinez, director of the Office of National Drug Control Policy; and others. For further information about the study's findings, contact Johnston at the U-M Institute for Social Research, (313) 763-5043.

ANN ARBOR---The nation continues to make progress in its effort to reduce illicit drug use among young people, according to research scientists at The University of Michigan's Institute for Social Research.

Reporting the results of their 17th national survey of American high school seniors, and 12th national survey of American college students, social psychologists Lloyd D. Johnston, Patrick M. O'Malley, and Jerald G. Bachman conclude that most of the news this year is good.

"We have tended to forget about the war on drugs this year, as other urgent issues like the Gulf War, the hostage situation, and the state of the economy have dominated the news," states Johnston, "but drugs are still a real and present issue for millions of American young people and their families. Fortunately, we have continued to make steady progress in dissuading our young people from being involved with illicit drugs."

The proportion of high school seniors using any illicit drug in the prior year fell from 33 percent to 29 percent

(more)

between 1990 and 1991, and was down considerably from the peak level of 54 percent in 1979. Similarly, among college students the use of any illicit drug in the prior year (i.e., annual prevalence) fell from 33 percent to 29 percent between 1990 and 1991, down from a peak of 56 percent in 1980.

Marijuana is still the most widely used illicit drug and accounts for some of the decline. Among seniors, annual use fell from 27 percent in 1990 to 24 percent in 1991, down from a peak of 51 percent in 1979. For college students, the decline in marijuana use was from 29 percent to 27 percent, down from a high of 51 percent in 1980 and 1981.

But the proportion using some illicit drug other than (usually in addition to) marijuana during the prior year is also declining, the U-M survey reports. Among the seniors, the proportion using an illicit drug other than marijuana fell from 18 percent to 16 percent between 1990 and 1991, down from a peak of 34 percent in 1981. Similarly, the statistic for college students fell from 15 percent to 13 percent, down from a peak of 32 percent in 1980.

Several of the specific classes of other illicit drugs showed changes in 1991.

Cocaine use among seniors fell from 5.3 percent to 3.5 percent annual prevalence between 1990 and 1991, down from a peak of 13.1 percent in 1985. Among college students, it fell from 5.6 percent in 1990 to 3.6 percent in 1991, from a peak of 17 percent in 1986.

Crack cocaine use among seniors fell from 1.9 percent to 1.5 percent annual prevalence between 1990 and 1991, from a peak of 4.1 percent in 1986. Among college students, who never attained very high levels of crack use, use fell from 0.6 percent to 0.5 percent annual prevalence between 1990 and 1991, down from a peak of 2.0 percent in 1987. Neither of these one-year 1990 to 1991 changes is statistically significant, but both suggest a continuation of a longer-term decline, according to the U-M survey.

Opiates other than heroin, taken as a class, fell from 4.5 percent to 3.5 percent between 1990 and 1991, down from a peak of 6.4 percent in 1977 among seniors. Among college

students, use fell from 2.9 percent to 2.7 percent between 1990 and 1991, down from a peak of 5.1 percent in 1980.

Most of the other illicit drug use rates are down by a less than statistically significant amount (e.g., stimulants, inhalants, and MDMA [ecstasy]), or fairly stable at a quite low level of use (e.g., PCP, heroin, crystal methamphetamine ["ice"], barbiturates, sedatives, methaqualone, and tranquilizers). (Tables 1 through 4 give the data on high school seniors for all drugs and Tables 8 through 11 do the same for college students.)

"Two of the most recent drugs to threaten have been 'ice' and 'ecstasy' (MDMA), but our data suggest that they never gained much of a foothold in these populations," comments Johnston. "That may be partially explained by the fact that young people have become more cautious about drugs in general. Also, in the case of ice, its similarity to crack very likely deterred use among the great majority, who already recognize crack as dangerous."

For some years the investigators have interpreted the decline in many of these classes of drugs (in particular, marijuana and cocaine) as resulting from the increasing concerns young people have about the hazards of using these drugs. "Peer disapproval of many drugs has also increased," Johnston notes, "perhaps in part because they are now seen as more dangerous. In any case, we believe these changes in perceived risk and peer norms have been the major determinants of the downturn, not a reduction in supply."

Throughout the life of the study the great majority of high school seniors have said that marijuana would be fairly easy for them to get, and until 1989 the perceived availability of cocaine actually had been rising (see Table 7). Since 1989, however, there has been some decline in the numbers of seniors who say cocaine would be fairly easy for them to get (from 59 percent in 1989 to 51 percent in 1991). The investigators believe one reason for this decline in perceived availability is that many fewer seniors these days have friends who use, and friendship circles are an important source of access to many drugs.

There was little further change in 1991 in the proportion seeing "great risk" associated with cocaine use,

(more)

and even some indication among seniors that the risk associated with crack had fallen somewhat. "This may be due in part to the sharp drop-off in public attention being paid to crack over the past year," notes Johnston.

Several drugs showed a continuation of longer-term increase in perceived risk: these included marijuana, amphetamines, and barbiturates (the barbiturate change was not significant in 1991). Others showed rather little change in 1991: cocaine in general, cocaine powder, specifically, and heroin. For PCP there was a decline in perceived risk for the first time, though not a statistically significant one.

Among seniors, disapproval of the use of these drugs is at very high levels, setting limits on the possible amount of further change, the investigators say. For example, over 90 percent of the seniors disapprove of even trying LSD, barbiturates, cocaine, or heroin. Eighty-seven percent disapprove of trying amphetamines, and 69 percent now disapprove of trying marijuana. "These represent considerable changes over the past decade in the acceptability of using any of these drugs," notes Johnston, "even though there was rather little further change in 1991."

There was one statistically significant change: the proportion of seniors disapproving of even trying cocaine rose from 92 percent to 94 percent between 1990 and 1991, up from a low of 75 percent in 1981. Johnston adds, "We tend to forget how widely accepted cocaine was in many circles just a decade ago, and how few people believed it was a dangerous and addicting drug."

Johnston thinks that one drug which bears watching is LSD, since use of it has not declined among seniors since the early 1980s and because there appears to be some upward drift in use, especially among college students. Annual prevalence rose among college students from 3.4 percent in 1989 to 5.1 percent in 1991. "Remember that this is one of the earliest drugs to fall from popularity because of concern about adverse effects such as flashbacks, bad trips, and possible neurological and chromosomal damage," he says. "However, these were the concerns of an earlier generation.

(more)

LSD and its effects have not been that widespread or attended to in recent years, making vicarious learning from the experiences of others less likely to occur among today's young people."

Use of the legal drugs, cigarettes and alcohol, remains widespread among American young people, the U-M survey says. Over half of the 1991 high school seniors (54 percent) drank an alcoholic beverage during the prior month. Close to a third (30 percent) reported at least one instance in the prior two weeks of having five or more drinks in a row (called "binge drinking" here).

However, both of these troubling statistics continued their longer-term declines in 1991, the investigators say. The proportions who drank at all in the prior month fell by 3 percent from the 1990 level, and by 18 percent from the 1980 peak level of 72 percent. Work by O'Malley has shown that this decline is due in part to the adoption of a 21-year-old minimum drinking age in many states. The proportion of seniors who engaged in binge drinking also fell by more than 2 percent in 1991. While this one-year change is not quite statistically significant, it continues a longer-term decline from a peak level of 41 percent in 1981 to 30 percent in 1991. "Clearly this decline in adolescent drunkenness translates into fewer lives being lost in drunk-driving accidents," the investigators state.

Among American college students, however, there has been much less change in active drinking rates, and in binge drinking. In 1991, 75 percent of the college student sample said they consumed alcohol during the prior month (no change from 1990 and down only modestly from the peak level of 83 percent in 1982). Binge drinking during the past two weeks was reported by 43 percent of the college students in 1991, just about where it has been since the study's first survey of college students in 1980. "While the moderation message for alcohol seems to have reached most sectors of society," Johnston says, "college students appear to have been insulated from it to a considerable degree. Of course, the extent to which they are so aggressively targeted by beer advertising and promotion may have a lot to do with that fact." The investigators note that alcohol consumption has

(more)

fallen considerably not only among high school seniors but also among college-age young adults who are not in college. (See Tables 12-15 for young-adult data.)

Cigarette smoking among both high school and college students also seems to be bucking the trend toward lowered drug use. "Considering what we know about the deadly health consequences of smoking, the number of young people who still begin the habit is shockingly high," asserts Johnston. "We can predict with a fair degree of certainty that hundreds of thousands of youngsters in this year's graduating class are going to die as the result of a long-term pattern of use of this drug which they began in childhood or adolescence. The same can be said for last year's class and next year's. It is a tragedy beyond comprehension, yet in the main it is met with silence."

Nearly 30 percent of all seniors (28.3 percent) report that they have smoked in the past month, down only 1 percent from 10 years earlier, and nearly one in five seniors (18.5 percent) already smokes daily, down less than 2 percent from 10 years earlier (20.3 percent in 1981). Even among the college students, who are far less likely to smoke than their non-college age peers, nearly a quarter reported smoking in the past month (23.2 percent), and one in seven smokes daily (13.8 percent), reflecting no change in either statistic since the mid-1980s.

"Considering the growing disapproval of smoking in society at large, the number of restrictions that have been enacted in recent years, and the decline in nearly all other forms of drug use, the fact that smoking is not declining is really very surprising---an anomaly," Johnston adds. As with alcohol, he believes that the massive advertising and promotion of the product has had an important effect on young people.

Anabolic steroids became an issue of public health concern in the late 1980s and were added to the U-M study's coverage in 1989. Since then there has been a very gradual (not statistically significant) decline in lifetime and annual prevalence. Some 1.4 percent of the 1991 seniors say they have used steroids at least once in the prior year, down from 1.7 percent in 1990 and 1.9 percent in 1989.

(more)

Among males, who account for most of the steroid use, the proportions using in the prior year were 2.8 percent in 1989, 2.6 percent in 1990, and 2.4 percent in 1991. Only about two-thirds of the seniors see the use of steroids as very dangerous.

\* \* \* \* \*

National samples of eighth and tenth grade students were included in the survey for the first time in 1991, so no trend data are yet available for these age groups. "In the early stages of the drug epidemic, drug use was much higher among college students than among high school students, who in turn had much higher rates than middle and junior high school students," observes Johnston. "Today the rates for college and high school students are nearly identical, while the rates for eighth and tenth graders are not as different as most people might guess from those for seniors." (Table 16 compares the usage rates for all drugs across the three grade levels.)

Discussing the drugs approximately in the order in which their use tends to be initiated:

Cigarettes: Some 44 percent of the eighth graders, who have a modal age of 13, have already tried cigarettes. Smoking in the past 30 days is reported by 14 percent of eighth graders, 21 percent of tenth graders, and 28 percent of 12th graders.

Alcohol: Drinking in the past year is reported by 54 percent of eighth graders, 72 percent of tenth graders, and 78 percent of 12th graders. Some 70 percent of the eighth graders say they have at least tried alcohol, 27 percent report having gotten drunk at least once, and 13 percent report having consumed five or more drinks in a row in just the prior two weeks.

"Clearly, drinking, which is illegal for all of these children, starts young and progresses fast for many of them," according to Johnston.

Inhalants: "Inhalant drugs such as glues, aerosols, and butane are readily available to youngsters through legal channels," Johnston says. "Furthermore, they are cheap and young people don't yet fully appreciate the dangers of using them. Therefore their use is relatively common at young

(more)

ages." Some 9 percent of the eighth graders report use in the prior year, compared with 7 percent of both the tenth and 12th graders. Nearly one in five of the eighth graders (18 percent) have at least tried an inhalant.

Marijuana: There is more of an age differentiation on marijuana, which tends to be the first of the illegal drugs tried, according to the U-M survey. Of the eighth graders, only 6 percent report use in the prior year, compared with 17 percent of the tenth graders and 24 percent of the seniors.

"Beyond marijuana, drugs are not usually initiated in any particular order, except that some of the most dangerous, like cocaine, crack, and heroin, tend to come late in the sequence," Johnston notes.

Stimulants: A fair proportion of younger students say they have tried stimulants (specifically amphetamines, which are prescription-controlled drugs). Eleven percent of the eighth graders, 13 percent of the tenth graders, and 15 percent of the 12th graders report some use.

LSD: Some LSD use may be found at all grade levels, with 2.7 percent of the eighth graders reporting any experience in their lifetime, 5.6 percent of the tenth graders, and 8.8 percent of the 12th graders.

Cocaine and Crack: Relatively few students initiate cocaine use by eighth grade (2.3 percent lifetime prevalence) or tenth grade (4.1 percent); for crack the numbers are lower still: 1.3 percent and 1.7 percent, respectively.

Heroin: Reported heroin experience is low in all grades, but actually slightly higher in the lower grades than in 12th grade. This is very likely due to the fact that few of the eventual school dropouts have left school by eighth or tenth grade, whereas most have left by 12th grade. Lifetime prevalence is 1.2 percent for both eighth and tenth grades, compared with 0.9 percent for 12th grade.

Steroids: While the use of anabolic steroids is relatively low at all grade levels, there is very little difference among the grades. For example, the lifetime prevalence rates for eighth, tenth, and 12th grades, respectively, are 1.9 percent, 1.8 percent, and 2.1 percent.

(more)



For just the boys in these grade levels, the corresponding rates are 3.0 percent, 3.1 percent, and 3.6 percent. While use appears to be trending down among seniors, it is too early to tell for the lower grades.

\* \* \* \* \*

Summing up this year's findings, Johnston states:

"Certainly the downward trends in illegal drug use among high school seniors and college students are good news, although the use of LSD, in particular, bears watching. Still, the absolute levels of drug use, especially at the lower grades, remain a cause for concern and demonstrate that we've still got a way to go in the battle against drugs.

"The stabilization of smoking initiation rates at high levels among our young people is a matter of the greatest public health concern, given the immense amount of illness and death which will predictably result from it. The situation as it stands is intolerable and cries out for major action on the part of our whole society. We should no longer allow the politics of tobacco to immobilize us because, quite literally, the lives of our children are at stake."

The study, titled "Monitoring the Future," is conducted by the U-M's Institute for Social Research under research grants from the National Institute on Drug Abuse. Data collections have been carried out in the spring of each year since 1975 with self-completed, confidential questionnaires being administered in classrooms by U-M research staff. Panels of respondents are randomly selected for follow-up questionnaires, which are sent every year through the mail. In 1991, 15,500 seniors were surveyed in 136 high schools, as well as 6,600 graduates from the previous ten graduating classes, which had modal ages of 19-28. Within the second group, 1,400 college students were identified who were 1-4 years past high school and were actively enrolled full-time in a 2-year or 4-year college; they constitute the "college student" sample. Similar sample sizes were obtained in the same way in previous years.

Trend data have been reported for high school seniors since 1975, college students since 1980, and 19-28 year olds (who are all high school graduates) since 1986. In 1991, national samples of eighth and tenth graders were added to the study design for the first time. A total of 18,300 eighth graders in 162 middle and junior high schools were surveyed, as well as 16,000 tenth graders in 122 high schools.

#####

**TABLE 1**  
**Trends in Lifetime Prevalence of Various Types of Drugs**

	Percent ever used																	'90-'91 change
	Class of 1975	Class of 1976	Class of 1977	Class of 1978	Class of 1979	Class of 1980	Class of 1981	Class of 1982	Class of 1983	Class of 1984	Class of 1985	Class of 1986	Class of 1987	Class of 1988	Class of 1989	Class of 1990	Class of 1991	
Approx. N =	9400	15400	17100	17800	15500	15900	17500	17700	16300	15900	16000	15200	16300	16300	16700	15200	15000	
Any Illicit Drug Use <sup>a</sup> Adjusted Version <sup>b</sup>	55.2	58.3	61.6	64.1	65.1	65.4	65.6	65.8	64.1	—	—	—	—	—	—	—	—	—
	—	—	—	—	—	—	—	64.4	62.9	61.6	60.6	57.6	56.6	53.9	50.9	47.9	44.1	-3.8 <sup>sss</sup>
Any Illicit Drug Other Than Marijuana <sup>c</sup> Adjusted Version <sup>b</sup>	36.2	35.4	35.8	36.5	37.4	38.7	42.8	45.0	44.4	—	—	—	—	—	—	—	—	—
	—	—	—	—	—	—	—	41.1	40.4	40.3	39.7	37.7	35.8	32.5	31.4	29.4	26.9	-2.5 <sup>ss</sup>
Marijuana/Hashish <sup>d</sup>	47.3	52.8	56.4	59.2	60.4	60.3	59.5	58.7	57.0	54.9	54.2	50.9	50.2	47.2	43.7	40.7	36.7	-4.0 <sup>sss</sup>
Inhalants <sup>d</sup>	NA	10.3	11.1	12.0	12.7	11.9	12.3	12.8	13.6	14.4	15.4	15.9	17.0	16.7	17.6	18.0	17.6	-0.4
Inhalants Adjusted <sup>e</sup>	NA	NA	NA	NA	18.2	17.3	17.2	17.7	18.2	18.0	18.1	20.1	18.6	17.5	18.6	18.5	18.0	-0.5
Amyl & Butyl Nitrites <sup>f,g</sup>	NA	NA	NA	NA	11.1	11.1	10.1	9.8	8.4	8.1	7.9	8.6	4.7	3.2	3.3	2.1	1.6	-0.5
Hallucinogens	16.3	15.1	13.9	14.3	14.1	13.3	13.3	12.5	11.9	10.7	10.3	9.7	10.3	8.9	9.4	9.4	9.6	+0.2
Hallucinogens Adjusted <sup>h</sup>	NA	NA	NA	NA	17.7	15.6	15.3	14.3	13.6	12.3	12.1	11.9	10.6	9.2	9.9	9.7	10.0	+0.3
LSD <sup>f,g</sup>	11.3	11.0	9.8	9.7	9.5	9.3	9.8	9.6	8.9	8.0	7.5	7.2	8.4	7.7	8.3	8.7	8.8	+0.1
PCP <sup>f,g</sup>	NA	NA	NA	NA	12.8	9.6	7.8	6.0	5.6	5.0	4.9	4.8	3.0	2.9	3.9	2.8	2.9	+0.1
Cocaine	9.0	9.7	10.8	12.9	15.4	15.7	16.5	16.0	16.2	16.1	17.3	16.9	15.2	12.1	10.3	9.4	7.8	-1.6 <sup>ss</sup>
"Crack" <sup>i</sup>	NA	NA	NA	NA	NA	NA	NA	NA	NA	NA	NA	NA	5.4	4.8	4.7	3.5	3.1	-0.4
Other cocaine <sup>j</sup>	NA	NA	NA	NA	NA	NA	NA	NA	NA	NA	NA	NA	14.0	12.1	8.5	8.6	7.0	-1.6 <sup>ss</sup>
Heroin	2.2	1.8	1.8	1.6	1.1	1.1	1.1	1.2	1.2	1.3	1.2	1.1	1.2	1.1	1.3	1.3	0.9	-0.4 <sup>s</sup>
Other opiates <sup>k</sup>	9.0	9.6	10.3	9.9	10.1	9.8	10.1	9.6	9.4	9.7	10.2	9.0	9.2	8.6	8.3	8.3	6.6	-1.7 <sup>sss</sup>
Stimulants <sup>k</sup>	22.3	22.6	23.0	22.9	24.2	26.4	32.2	35.6	35.4	NA	NA	NA	NA	NA	NA	NA	NA	NA
Stimulants Adjusted <sup>b,k</sup>	NA	NA	NA	NA	NA	NA	NA	27.9	26.9	27.9	26.2	23.4	21.6	19.8	19.1	17.5	15.4	-2.1 <sup>ss</sup>
Crystal Methamphetamine <sup>l</sup>	NA	NA	NA	NA	NA	NA	NA	NA	NA	NA	NA	NA	NA	NA	NA	2.7	3.3	+0.6
Sedatives <sup>k,m</sup>	18.2	17.7	17.4	16.0	14.6	14.9	16.0	15.2	14.4	13.3	11.8	10.4	8.7	7.8	7.4	7.5	6.7	-0.8
Barbiturates <sup>k</sup>	16.9	16.2	15.6	13.7	11.8	11.0	11.3	10.3	9.9	9.9	9.2	8.4	7.4	6.7	6.5	6.8	6.2	-0.6
Methaqualone <sup>k,m</sup>	8.1	7.8	8.5	7.9	8.3	9.5	10.6	10.7	10.1	8.3	6.7	5.2	4.0	3.3	2.7	2.3	1.3	-1.0 <sup>s</sup>
Tranquilizers <sup>k</sup>	17.0	16.8	18.0	17.0	16.3	15.2	14.7	14.0	13.3	12.4	11.9	10.9	10.9	9.4	7.6	7.2	7.2	0.0
Alcohol	90.4	91.9	92.5	93.1	93.0	93.2	92.6	92.8	92.6	92.6	92.2	91.3	92.2	92.0	90.7	89.5	88.0	-1.5
Cigarettes	73.6	75.4	75.7	75.3	74.0	71.0	71.0	70.1	70.6	69.7	68.8	67.6	67.2	66.4	65.7	64.4	63.1	-1.3
Steroids <sup>l</sup>	NA	NA	NA	NA	NA	NA	NA	NA	NA	NA	NA	NA	NA	NA	3.0	2.9	2.1	-0.8

NOTES: Level of significance of difference between the two most recent classes: s = .05, ss = .01, sss = .001. NA indicates data not available.

<sup>a</sup> Use of "any illicit drugs" includes any use of marijuana, hallucinogens, cocaine, and heroin, or any use of other opiates, stimulants, barbiturates, methaqualone (excluded since 1990), or tranquilizers not under a doctor's orders.

<sup>b</sup> Based on the data from the revised question, which attempts to exclude the inappropriate reporting of non-prescription stimulants.

<sup>c</sup> Use of "other illicit drugs" includes any use of hallucinogens, cocaine, and heroin, or any use of other opiates, stimulants, barbiturates, methaqualone (excluded since 1990), or tranquilizers not under a doctor's orders.

<sup>d</sup> Data based on four questionnaire forms in 1976-1988; N is four-fifths of N indicated. Data based on five questionnaire forms in 1989-1991; N is five-sixths of N indicated.

<sup>e</sup> Adjusted for underreporting of amyl and butyl nitrites. See text for details.

<sup>f</sup> Data based on a single questionnaire form; N is one-fifth of N indicated in 1979-1988 and one-sixth of N indicated in 1989-1991.

<sup>g</sup> Question text changed slightly in 1987.

<sup>h</sup> Adjusted for underreporting of PCP. See text for details.

<sup>i</sup> Data based on two questionnaire forms in 1987-1989; N is two-fifths of N indicated in 1987-1988 and two-sixths of N indicated in 1989. Data based on six questionnaire forms in 1990-1991.

<sup>j</sup> Data based on a single questionnaire form in 1987-1989; N is one-fifth of N indicated in 1987-1988 and one-sixth of N indicated in 1989. Data based on four questionnaire forms in 1990-1991; N is four-sixths of N indicated.

<sup>k</sup> Only drug use which was not under a doctor's orders is included here.

<sup>l</sup> Data based on two questionnaire forms; N is two-sixths of N indicated. Steroid data based on a single questionnaire form in 1989-1990.

<sup>m</sup> Data based on five questionnaire forms in 1975-1988, six questionnaire forms in 1989, and one questionnaire form in 1990-1991; N is one-sixth of N indicated in 1990-1991.

**TABLE 2**  
**Trends in Annual Prevalence of Various Types of Drugs**

	Percent who used in last twelve months																	'90-'91 change	
	Class of 1975	Class of 1976	Class of 1977	Class of 1978	Class of 1979	Class of 1980	Class of 1981	Class of 1982	Class of 1983	Class of 1984	Class of 1985	Class of 1986	Class of 1987	Class of 1988	Class of 1989	Class of 1990	Class of 1991		
Approx. N =	9400	15400	17100	17800	15500	15900	17500	17700	16300	15900	16000	15200	16300	16300	16700	15200	15000		
Any Illicit Drug Use <sup>a</sup>	45.0	48.1	51.1	53.8	54.2	53.1	52.1	50.8	49.1	—	—	—	—	—	—	—	—	—	
Adjusted Version <sup>b</sup>	—	—	—	—	—	—	—	49.4	47.4	45.8	46.3	44.3	41.7	38.5	35.4	32.5	29.4	-3.1 <sup>ss</sup>	
Any Illicit Drug Other Than Marijuana <sup>c</sup>	26.2	25.4	26.0	27.1	28.2	30.4	34.0	33.8	32.5	—	—	—	—	—	—	—	—	—	
Adjusted Version <sup>b</sup>	—	—	—	—	—	—	—	30.1	28.4	28.0	27.4	25.9	24.1	21.1	20.0	17.9	16.2	-1.7 <sup>s</sup>	
Marijuana/Hashish	40.0	44.5	47.6	50.2	50.8	48.8	46.1	44.3	42.3	40.0	40.6	38.8	36.3	33.1	29.6	27.0	23.9	-3.1 <sup>ss</sup>	
Inhalants <sup>d</sup>	NA	3.0	3.7	4.1	5.4	4.6	4.1	4.5	4.3	5.1	5.7	6.1	6.9	6.5	5.9	6.9	6.6	-0.3	
Inhalants Adjusted <sup>e</sup>	NA	NA	NA	NA	8.9	7.9	6.1	6.6	6.2	7.2	7.5	8.9	8.1	7.1	6.9	7.5	6.9	-0.6	
Amyl/Butyl Nitrites <sup>f,g</sup>	NA	NA	NA	NA	6.5	5.7	3.7	3.6	3.6	4.0	4.0	4.7	2.6	1.7	1.7	1.4	0.9	-0.5	
Hallucinogens	11.2	9.4	8.8	9.6	9.9	9.3	9.0	8.1	7.3	6.5	6.3	6.0	6.4	5.5	5.6	5.9	5.8	-0.1	
Hallucinogens Adjusted <sup>h</sup>	NA	NA	NA	NA	11.8	10.4	10.1	9.0	8.3	7.3	7.6	7.6	6.7	5.8	6.2	6.0	6.1	+0.1	
LSD <sup>f,g</sup>	7.2	6.4	5.5	6.3	6.6	6.5	6.5	6.1	5.4	4.7	4.4	4.5	5.2	4.8	4.9	5.4	5.2	-0.2	
PCP <sup>f,g</sup>	NA	NA	NA	NA	7.0	4.4	3.2	2.2	2.6	2.3	2.9	2.4	1.3	1.2	2.4	1.2	1.4	+0.2	
Cocaine	5.6	6.0	7.2	9.0	12.0	12.3	12.4	11.5	11.4	11.6	13.1	12.7	10.3	7.9	6.5	5.3	3.5	-1.8 <sup>sss</sup>	
"Crack" <sup>i</sup>	NA	NA	NA	NA	NA	NA	NA	NA	NA	NA	NA	NA	4.1	3.9	3.1	3.1	1.9	1.5	-0.4
Other cocaine <sup>j</sup>	NA	NA	NA	NA	NA	NA	NA	NA	NA	NA	NA	NA	9.8	7.4	5.2	4.6	3.2	-1.4 <sup>sss</sup>	
Heroin	1.0	0.8	0.8	0.8	0.5	0.5	0.5	0.6	0.6	0.5	0.6	0.5	0.5	0.5	0.6	0.5	0.4	-0.1	
Other opiates <sup>k</sup>	5.7	5.7	6.4	6.0	6.2	6.3	5.9	5.3	5.1	5.2	5.9	5.2	5.3	4.6	4.4	4.5	3.5	-1.0 <sup>ss</sup>	
Stimulants <sup>k</sup>	16.2	15.8	16.3	17.1	18.3	20.8	26.0	26.1	24.6	NA	NA	NA	NA	NA	NA	NA	NA	NA	
Stimulants Adjusted <sup>b,k</sup>	NA	NA	NA	NA	NA	NA	NA	20.3	17.9	17.7	15.8	13.4	12.2	10.9	10.8	9.1	8.2	-0.9	
Crystal Methamphetamine <sup>l</sup>	NA	NA	NA	NA	NA	NA	NA	NA	NA	NA	NA	NA	NA	NA	NA	1.3	1.4	+0.1	
Sedatives <sup>k,m</sup>	11.7	10.7	10.8	9.9	9.9	10.3	10.5	9.1	7.9	6.6	5.8	5.2	4.1	3.7	3.7	3.6	3.6	0.0	
Barbiturates <sup>k</sup>	10.7	9.6	9.3	8.1	7.5	6.8	6.6	5.5	5.2	4.9	4.6	4.2	3.6	3.2	3.3	3.4	3.4	0.0	
Methaqualone <sup>k,m</sup>	5.1	4.7	5.2	4.9	5.9	7.2	7.6	6.8	5.4	3.8	2.8	2.1	1.5	1.3	1.3	0.7	0.5	-0.2	
Tranquilizers <sup>k</sup>	10.6	10.3	10.8	9.9	9.6	8.7	8.0	7.0	6.9	6.1	6.1	5.8	5.5	4.8	3.8	3.5	3.6	+0.1	
Alcohol	84.8	85.7	87.0	87.7	88.1	87.9	87.0	86.8	87.3	86.0	85.6	84.5	85.7	85.3	82.7	80.6	77.7	-2.9 <sup>ss</sup>	
Cigarettes	NA	NA	NA	NA	NA	NA	NA	NA	NA	NA	NA	NA	NA	NA	NA	NA	NA	NA	
Steroids <sup>l</sup>	NA	NA	NA	NA	NA	NA	NA	NA	NA	NA	NA	NA	NA	NA	1.9	1.7	1.4	-0.3	

NOTES: Level of significance of difference between the two most recent classes: s = .05, ss = .01, sss = .001. NA indicates data not available.

<sup>a</sup> Use of "any illicit drugs" includes any use of marijuana, hallucinogens, cocaine, and heroin, or any use of other opiates, stimulants, barbiturates, methaqualone (excluded since 1990), or tranquilizers not under a doctor's orders.

<sup>b</sup> Based on the data from the revised question, which attempts to exclude the inappropriate reporting of non-prescription stimulants.

<sup>c</sup> Use of "other illicit drugs" includes any use of hallucinogens, cocaine, and heroin, or any use of other opiates, stimulants, barbiturates, methaqualone (excluded since 1990), or tranquilizers not under a doctor's orders.

<sup>d</sup> Data based on four questionnaire forms in 1976-1988; N is four-fifths of N indicated. Data based on five questionnaire forms in 1989-1991; N is five-sixths of N indicated.

<sup>e</sup> Adjusted for underreporting of amyl and butyl nitrites. See text for details.

<sup>f</sup> Data based on a single questionnaire form; N is one-fifth of N indicated in 1979-1988 and one-sixth of N indicated in 1989-1991.

<sup>g</sup> Question text changed slightly in 1987.

<sup>h</sup> Adjusted for underreporting of PCP. See text for details.

<sup>i</sup> Data based on a single questionnaire form in 1986; N is one-fifth of N indicated. Data based on two questionnaire forms in 1987-1989; N is two-fifths of N indicated in 1987-1988 and two-sixths of N indicated in 1989. Data based on six questionnaire forms in 1990-1991.

<sup>j</sup> Data based on a single questionnaire form in 1987-1989; N is one-fifth of N indicated in 1987-1988 and one-sixth of N indicated in 1989. Data based on four questionnaire forms in 1990-1991; N is four-sixths of N indicated.

<sup>k</sup> Only drug use which was not under a doctor's orders is included here.

<sup>l</sup> Data based on two questionnaire forms; N is two-sixths of N indicated. Steroid data based on a single questionnaire form in 1989-1990.

<sup>m</sup> Data based on five questionnaire forms in 1975-1988, six questionnaire forms in 1989, and one questionnaire form in 1990-1991. N is one-sixth of N indicated in 1990-1991.

**TABLE 3**  
**Trends in Thirty-Day Prevalence of Various Types of Drugs**

	Percent who used in last thirty days																	'90-'91 change
	Class of 1975	Class of 1976	Class of 1977	Class of 1978	Class of 1979	Class of 1980	Class of 1981	Class of 1982	Class of 1983	Class of 1984	Class of 1985	Class of 1986	Class of 1987	Class of 1988	Class of 1989	Class of 1990	Class of 1991	
Approx. N =	9400	15400	17100	17800	15500	15900	17500	17700	16300	15900	16000	15200	16300	16300	16700	15200	15000	
<i>Any Illicit Drug Use<sup>a</sup></i>	30.7	34.2	37.6	38.9	38.9	37.2	36.9	33.5	32.4	—	—	—	—	—	—	—	—	—
<i>Adjusted Version<sup>b</sup></i>	—	—	—	—	—	—	—	32.5	30.5	29.2	29.7	27.1	24.7	21.3	19.7	17.2	16.4	-0.8
<i>Any Illicit Drug Other Than Marijuana<sup>c</sup></i>	15.4	13.9	15.2	15.1	16.8	18.4	21.7	19.2	18.4	—	—	—	—	—	—	—	—	—
<i>Adjusted Version<sup>b</sup></i>	—	—	—	—	—	—	—	17.0	15.4	15.1	14.9	13.2	11.6	10.0	9.1	8.0	7.1	-0.9s
Marijuana/Hashish <sup>d</sup>	27.1	32.2	35.4	37.1	36.5	33.7	31.6	28.5	27.0	25.2	25.7	23.4	21.0	18.0	16.7	14.0	13.8	-0.2
Inhalants <sup>d</sup>	NA	0.9	1.3	1.5	1.7	1.4	1.5	1.5	1.7	1.9	2.2	2.5	2.8	2.6	2.3	2.7	2.4	-0.3
<i>Inhalants Adjusted<sup>e</sup></i>	NA	NA	NA	NA	3.2	2.7	2.5	2.5	2.5	2.6	3.0	3.2	3.5	3.0	2.7	2.9	2.6	-0.3
Amyl/Butyl Nitrites <sup>f,g</sup>	NA	NA	NA	NA	2.4	1.8	1.4	1.1	1.4	1.4	1.6	1.3	1.3	0.6	0.6	0.6	0.4	-0.2
Hallucinogens <sup>d</sup>	4.7	3.4	4.1	3.9	4.0	3.7	3.7	3.4	2.8	2.6	2.5	2.5	2.5	2.2	2.2	2.2	2.2	0.0
<i>Hallucinogens Adjusted<sup>h</sup></i>	NA	NA	NA	NA	5.3	4.4	4.5	4.1	3.5	3.2	3.8	3.5	2.8	2.3	2.9	2.3	2.4	+0.1
LSD <sup>i</sup>	2.3	1.9	2.1	2.1	2.4	2.3	2.5	2.4	1.9	1.5	1.6	1.7	1.8	1.8	1.8	1.9	1.9	0.0
PCP <sup>f,g</sup>	NA	NA	NA	NA	2.4	1.4	1.4	1.0	1.3	1.0	1.6	1.3	0.6	0.3	1.4	0.4	0.5	+0.1
Cocaine <sup>i</sup>	1.9	2.0	2.9	3.9	5.7	5.2	5.8	5.0	4.9	5.8	6.7	6.2	4.3	3.4	2.8	1.9	1.4	-0.5s
"Crack" <sup>i</sup>	NA	NA	NA	NA	NA	NA	NA	NA	NA	NA	NA	NA	1.3	1.6	1.4	0.7	0.7	0.0
Other cocaine <sup>j</sup>	NA	NA	NA	NA	NA	NA	NA	NA	NA	NA	NA	NA	4.1	3.2	1.9	1.7	1.2	-0.5ss
Heroin	0.4	0.2	0.3	0.3	0.2	0.2	0.2	0.2	0.2	0.3	0.3	0.2	0.2	0.2	0.3	0.2	0.2	0.0
Other opiates <sup>k</sup>	2.1	2.0	2.8	2.1	2.4	2.4	2.1	1.8	1.8	1.8	2.3	2.0	1.8	1.6	1.6	1.5	1.1	-0.4s
Stimulants <sup>k</sup>	8.5	7.7	8.8	8.7	9.9	12.1	15.8	13.7	12.4	NA	NA	NA	NA	NA	NA	NA	NA	NA
<i>Stimulants Adjusted<sup>b,k</sup></i>	NA	NA	NA	NA	NA	NA	NA	10.7	8.9	8.3	6.8	5.5	5.2	4.6	4.2	3.7	3.2	-0.5
Crystal Methamphetamine <sup>l</sup>	NA	NA	NA	NA	NA	NA	NA	NA	NA	NA	NA	NA	NA	NA	NA	0.6	0.6	0.0
Sedatives <sup>k,m</sup>	5.4	4.5	5.1	4.2	4.4	4.8	4.6	3.4	3.0	2.3	2.4	2.2	1.7	1.4	1.6	1.4	1.5	+0.1
Barbiturates <sup>k</sup>	4.7	3.9	4.3	3.2	3.2	2.9	2.6	2.0	2.1	1.7	2.0	1.8	1.4	1.2	1.4	1.3	1.4	+0.1
Methaqualone <sup>k,m</sup>	2.1	1.6	2.3	1.9	2.3	3.3	3.1	2.4	1.8	1.1	1.0	0.8	0.6	0.5	0.6	0.2	0.2	0.0
Tranquilizers <sup>k</sup>	4.1	4.0	4.6	3.4	3.7	3.1	2.7	2.4	2.5	2.1	2.1	2.1	2.0	1.5	1.3	1.2	1.4	+0.2
Alcohol	68.2	68.3	71.2	72.1	71.8	72.0	70.7	69.7	69.4	67.2	65.9	65.3	66.4	63.9	60.0	57.1	54.0	-3.1s
Cigarettes	36.7	38.8	38.4	36.7	34.4	30.5	29.4	30.0	30.3	29.3	30.1	29.6	29.4	28.7	28.6	29.4	28.3	-1.1
Steroids <sup>l</sup>	NA	NA	NA	NA	NA	NA	NA	NA	NA	NA	NA	NA	NA	NA	0.8	1.0	0.8	-0.2

NOTES: Level of significance of difference between the two most recent classes: s = .05, ss = .01, sss = .001. NA indicates data not available.

<sup>a</sup>Use of "any illicit drugs" includes any use of marijuana, hallucinogens, cocaine, and heroin, or any use of other opiates, stimulants, barbiturates, methaqualone (excluded since 1990), or tranquilizers not under a doctor's orders.

<sup>b</sup>Based on the data from the revised question, which attempts to exclude the inappropriate reporting of non-prescription stimulants.

<sup>c</sup>Use of "other illicit drugs" includes any use of hallucinogens, cocaine, and heroin, or any use of other opiates, stimulants, barbiturates, methaqualone (excluded since 1990), or tranquilizers not under a doctor's orders.

<sup>d</sup>Data based on four questionnaire forms in 1976-1988; N is four-fifths of N indicated. Data based on five questionnaire forms in 1989-1991; N is five-sixths of N indicated.

<sup>e</sup>Adjusted for underreporting of amyl and butyl nitrites. See text for details.

<sup>f</sup>Data based on a single questionnaire form; N is one-fifth of N indicated in 1979-1988 and one-sixth of N indicated in 1989-1991.

<sup>g</sup>Question text changed slightly in 1987.

<sup>h</sup>Adjusted for underreporting of PCP. See text for details.

<sup>i</sup>Data based on two questionnaire forms in 1987-1989; N is two-fifths of N indicated in 1987-1988 and two-sixths of N indicated in 1989. Data based on six questionnaire forms in 1990-1991.

<sup>j</sup>Data based on a single questionnaire form in 1987-1989; N is one-fifth of N indicated in 1987-1988 and one-sixth of N indicated in 1989. Data based on four questionnaire forms in 1990-1991; N is four-sixths of N indicated.

<sup>k</sup>Only drug use which was not under a doctor's orders is included here.

<sup>l</sup>Data based on two questionnaire forms; N is two-sixths of N indicated. Steroid data based on a single questionnaire form in 1989-1990.

<sup>m</sup>Data based on five questionnaire forms in 1975-1988, six questionnaire forms in 1989, and one questionnaire form in 1990-1991; N is one-sixth of N indicated in 1990-1991.

**TABLE 4**  
**Trends in Thirty-Day Prevalence of Daily Use of Various Types of Drugs**

	Percent who used daily in last thirty days																	'90-'91 change	
	Class of 1975	Class of 1976	Class of 1977	Class of 1978	Class of 1979	Class of 1980	Class of 1981	Class of 1982	Class of 1983	Class of 1984	Class of 1985	Class of 1986	Class of 1987	Class of 1988	Class of 1989	Class of 1990	Class of 1991		
Approx. N =	9400	15400	17100	17800	15500	15900	17500	17700	16300	15900	16000	15200	16300	16300	16700	15200	15000		
Marijuana/Hashish	6.0	8.2	9.1	10.7	10.3	9.1	7.0	6.3	5.5	5.0	4.9	4.0	3.3	2.7	2.9	2.2	2.0	-0.2	
Inhalants <sup>a</sup>	NA	0.0	0.0	0.1	0.0	0.1	0.1	0.1	0.1	0.1	0.1	0.2	0.2	0.1	0.2	0.2	0.3	0.2	-0.1
Inhalants Adjusted <sup>b</sup>	NA	NA	NA	NA	0.1	0.2	0.2	0.2	0.2	0.2	0.4	0.4	0.4	0.3	0.3	0.3	0.5	+0.2	
Amyl & Butyl Nitrites <sup>c,d</sup>	NA	NA	NA	NA	0.0	0.1	0.1	0.0	0.2	0.1	0.3	0.5	0.3	0.1	0.3	0.1	0.2	+0.1	
Hallucinogens	0.1	0.1	0.1	0.1	0.1	0.1	0.1	0.1	0.1	0.1	0.1	0.1	0.1	0.0	0.1	0.1	0.1	0.0	
Hallucinogens Adjusted <sup>e</sup>	NA	NA	NA	NA	0.2	0.2	0.1	0.2	0.2	0.2	0.3	0.3	0.2	0.0	0.3	0.3	0.1	-0.2	
LSD	0.0	0.0	0.0	0.0	0.0	0.0	0.1	0.0	0.1	0.1	0.1	0.0	0.1	0.0	0.0	0.1	0.1	0.0	
PCP <sup>c,d</sup>	NA	NA	NA	NA	0.1	0.1	0.1	0.1	0.1	0.1	0.3	0.2	0.3	0.1	0.2	0.1	0.1	0.0	
Cocaine <sup>f</sup>	0.1	0.1	0.1	0.1	0.2	0.2	0.3	0.2	0.2	0.2	0.4	0.4	0.3	0.2	0.3	0.1	0.1	0.0	
"Crack" <sup>f</sup>	NA	NA	NA	NA	NA	NA	NA	NA	NA	NA	NA	NA	NA	0.1	0.1	0.2	0.1	0.1	0.0
Other cocaine <sup>g</sup>	NA	NA	NA	NA	NA	NA	NA	NA	NA	NA	NA	NA	NA	0.2	0.2	0.1	0.1	0.1	0.0
Heroin	0.1	0.0	0.0	0.0	0.0	0.0	0.0	0.0	0.1	0.0	0.0	0.0	0.0	0.0	0.1	0.0	0.0	0.0	
Other opiates <sup>h</sup>	0.1	0.1	0.2	0.1	0.0	0.1	0.1	0.1	0.1	0.1	0.1	0.1	0.1	0.1	0.1	0.2	0.1	0.1	0.0
Stimulants <sup>h</sup>	0.5	0.4	0.5	0.5	0.6	0.7	1.2	1.1	1.1	NA	NA	NA	NA	NA	NA	NA	NA	NA	NA
Stimulants Adjusted <sup>h,i</sup>	NA	NA	NA	NA	NA	NA	NA	0.7	0.8	0.6	0.4	0.3	0.3	0.3	0.3	0.3	0.2	0.2	0.0
Crystal Methamphetamine <sup>j</sup>	NA	NA	NA	NA	NA	NA	NA	NA	NA	NA	NA	NA	NA	NA	NA	NA	0.1	0.1	-0.1
Sedatives <sup>h,k</sup>	0.3	0.2	0.2	0.2	0.1	0.2	0.2	0.2	0.2	0.1	0.1	0.1	0.1	0.1	0.1	0.1	0.1	0.1	0.0
Barbiturates <sup>h</sup>	0.1	0.1	0.2	0.1	0.0	0.1	0.1	0.1	0.1	0.0	0.1	0.1	0.1	0.0	0.1	0.1	0.1	0.1	0.0
Methaqualone <sup>h,k</sup>	0.0	0.0	0.0	0.0	0.0	0.1	0.1	0.1	0.0	0.0	0.0	0.0	0.0	0.1	0.0	0.0	0.0	0.0	0.0
Tranquilizers <sup>h</sup>	0.1	0.2	0.3	0.1	0.1	0.1	0.1	0.1	0.1	0.1	0.0	0.0	0.1	0.0	0.1	0.1	0.1	0.1	0.0
Alcohol																			
Daily	5.7	5.6	6.1	5.7	6.9	6.0	6.0	5.7	5.5	4.8	5.0	4.8	4.8	4.2	4.2	3.7	3.6	-0.1	
5+ drinks in a row/ last 2 weeks	36.8	37.1	39.4	40.3	41.2	41.2	41.4	40.5	40.8	38.7	36.7	36.8	37.5	34.7	33.0	32.2	29.8	-2.4	
Cigarettes																			
Daily	26.9	28.8	28.8	27.5	25.4	21.3	20.3	21.1	21.2	18.7	19.5	18.7	18.7	18.1	18.9	19.1	18.5	-0.6	
Half-pack or more per day	17.9	19.2	19.4	18.8	16.5	14.3	13.5	14.2	13.8	12.3	12.5	11.4	11.4	10.6	11.2	11.3	10.7	-0.6	
Steroids <sup>j</sup>	NA	NA	NA	NA	NA	NA	NA	NA	NA	NA	NA	NA	NA	NA	0.1	0.2	0.1	-0.1	

NOTES: Level of significance of difference between the two most recent classes:  $s = .05$ ,  $ss = .01$ ,  $sss = .001$ . NA indicates data not available. Any apparent inconsistency between the change estimate and the prevalence estimates for the two most recent classes is due to rounding error.

<sup>a</sup>Data based on four questionnaire forms in 1976-1988; N is four-fifths of N indicated. Data based on five questionnaire forms in 1989-1991; N is five-sixths of N indicated.

<sup>b</sup>Adjusted for underreporting of amyl and butyl nitrites. See text for details.

<sup>c</sup>Data based on a single questionnaire form; N is one-fifth of N indicated in 1979-1988 and one-sixth of N indicated in 1989-1991.

<sup>d</sup>Question text changed slightly in 1987.

<sup>e</sup>Adjusted for underreporting of PCP. See text for details.

<sup>f</sup>Data based on two questionnaire forms in 1987-1989; N is two-fifths of N indicated in 1987-1988 and two-sixths of N indicated in 1989. Data based on six questionnaire forms in 1990-1991.

<sup>g</sup>Data were based on a single questionnaire form in 1987-1989; N is one-fifth of N indicated in 1987-1988 and one-sixth of N indicated in 1989. Data based on four questionnaire forms in 1990-1991; N is four-sixths of N indicated.

<sup>h</sup>Only drug use which was not under a doctor's orders is included here.

<sup>i</sup>Based on the data from the revised question, which attempts to exclude the inappropriate reporting of non-prescription stimulants.

<sup>j</sup>Data based on two questionnaire forms; N is two-sixths of N indicated. Steroid data based on a single questionnaire form in 1989-1990.

<sup>k</sup>Data based on five questionnaire forms in 1975-1988, six questionnaire forms in 1989, and one questionnaire form in 1990-1991; N is one-sixth of N indicated in 1990-1991.

**TABLE 5**

**Trends in Harmfulness of Drugs as Perceived by Seniors**

Q. How much do you think people risk harming themselves (physically or in other ways), if they . . .	Percentage saying "great risk" <sup>a</sup>																	
	Class of 1975	Class of 1976	Class of 1977	Class of 1978	Class of 1979	Class of 1980	Class of 1981	Class of 1982	Class of 1983	Class of 1984	Class of 1985	Class of 1986	Class of 1987	Class of 1988	Class of 1989	Class of 1990	Class of 1991	'90-'91 change
Try marijuana once or twice	15.1	11.4	9.5	8.1	9.4	10.0	13.0	11.5	12.7	14.7	14.8	15.1	18.4	19.0	23.6	23.1	27.1	+4.0 <sub>ss</sub>
Smoke marijuana occasionally	18.1	15.0	13.4	12.4	13.5	14.7	19.1	18.3	20.6	22.6	24.5	25.0	30.4	31.7	36.5	36.9	40.6	+3.7 <sub>s</sub>
Smoke marijuana regularly	43.3	38.6	36.4	34.9	42.0	50.4	57.6	60.4	62.8	66.9	70.4	71.3	73.5	77.0	77.5	77.8	78.6	+0.8
Try LSD once or twice	49.4	45.7	43.2	42.7	41.6	43.9	45.5	44.9	44.7	45.4	43.5	42.0	44.9	45.7	46.0	44.7	46.6	+1.9
Take LSD regularly	81.4	80.8	79.1	81.1	82.4	83.0	83.5	83.5	83.2	83.8	82.9	82.6	83.8	84.2	84.3	84.5	84.3	-0.2
Try PCP once or twice	NA	NA	NA	NA	NA	NA	NA	NA	NA	NA	NA	NA	55.6	58.8	56.6	55.2	51.7	-3.5
Try cocaine once or twice	42.6	39.1	35.6	33.2	31.5	31.3	32.1	32.8	33.0	35.7	34.0	33.5	47.9	51.2	54.9	59.4	59.4	0.0
Take cocaine occasionally	NA	NA	NA	NA	NA	NA	NA	NA	NA	NA	NA	NA	54.2	66.8	69.2	71.8	73.9	+1.6
Take cocaine regularly	73.1	72.3	68.2	68.2	69.5	69.2	71.2	73.0	74.3	78.8	79.0	82.2	88.5	89.2	90.2	91.1	90.4	-0.7
Try "crack" once or twice	NA	NA	NA	NA	NA	NA	NA	NA	NA	NA	NA	NA	57.0	62.1	62.9	64.3	60.6	-3.7 <sub>s</sub>
Take "crack" occasionally	NA	NA	NA	NA	NA	NA	NA	NA	NA	NA	NA	NA	70.4	73.2	75.3	80.4	76.5	-3.9 <sub>ss</sub>
Take "crack" regularly	NA	NA	NA	NA	NA	NA	NA	NA	NA	NA	NA	NA	84.6	84.8	85.6	91.6	90.1	-1.5
Try cocaine powder once or twice	NA	NA	NA	NA	NA	NA	NA	NA	NA	NA	NA	NA	45.3	51.7	53.8	53.9	53.6	-0.3
Take cocaine powder occasionally	NA	NA	NA	NA	NA	NA	NA	NA	NA	NA	NA	NA	56.8	61.9	65.8	71.1	69.8	-1.3
Take cocaine powder regularly	NA	NA	NA	NA	NA	NA	NA	NA	NA	NA	NA	NA	81.4	82.9	83.9	90.2	88.9	-1.3
Try heroin once or twice	60.1	58.9	55.8	52.9	50.4	52.1	52.9	51.1	50.8	49.8	47.3	45.8	53.6	54.0	53.8	55.4	55.2	-0.2
Take heroin occasionally	75.6	75.6	71.9	71.4	70.9	70.9	72.2	69.8	71.8	70.7	69.8	68.2	74.6	73.8	75.5	76.6	74.9	-1.7
Take heroin regularly	87.2	88.6	86.1	86.6	87.5	86.2	87.5	86.0	86.1	87.2	86.0	87.1	88.7	88.8	89.5	90.2	89.6	-0.6
Try amphetamines once or twice	35.4	33.4	30.8	29.9	29.7	29.7	26.4	25.3	24.7	25.4	25.2	25.1	29.1	29.6	32.8	32.2	36.3	+4.1 <sub>s</sub>
Take amphetamines regularly	69.0	67.3	66.6	67.1	69.9	69.1	66.1	64.7	64.8	67.1	67.2	67.3	69.4	69.8	71.2	71.2	74.1	+2.9
Try barbiturates once or twice	34.8	32.5	31.2	31.3	30.7	30.9	28.4	27.5	27.0	27.4	26.1	25.4	30.9	29.7	32.2	32.4	35.1	+2.7
Take barbiturates regularly	69.1	67.7	68.6	68.4	71.6	72.2	69.9	67.6	67.7	68.5	68.3	67.2	69.4	69.6	70.5	70.2	70.5	+0.3
Try one or two drinks of an alcoholic beverage (beer, wine, liquor)	5.3	4.8	4.1	3.4	4.1	3.8	4.6	3.5	4.2	4.6	5.0	4.6	6.2	6.0	6.0	8.3	9.1	+0.8
Take one or two drinks nearly every day	21.5	21.2	18.5	19.6	22.6	20.3	21.6	21.6	21.6	23.0	24.4	25.1	26.2	27.3	28.5	31.3	32.7	+1.4
Take four or five drinks nearly every day	63.5	61.0	62.9	63.1	66.2	65.7	64.5	65.5	66.8	68.4	69.8	66.5	69.7	68.5	69.8	70.9	69.5	-1.4
Have five or more drinks once or twice each weekend	37.8	37.0	34.7	34.5	34.9	35.9	36.3	36.0	38.6	41.7	43.0	39.1	41.9	42.6	44.0	47.1	48.6	+1.5
Smoke one or more packs of cigarettes per day	51.3	56.4	58.4	59.0	63.0	63.7	63.3	60.5	61.2	63.8	66.5	66.0	68.6	68.0	67.2	68.2	69.4	+1.2
Approx. N =	(2804)	(2918)	(3052)	(3770)	(3250)	(3234)	(3604)	(3557)	(3305)	(3262)	(3250)	(3020)	(3315)	(3276)	(2796)	(2553)	(2549)	

NOTE: Level of significance of difference between the two most recent classes: s = .05, ss = .01, sss = .001. NA indicates data not available.

<sup>a</sup> Answer alternatives were: (1) No risk, (2) Slight risk, (3) Moderate risk, (4) Great risk, and (5) Can't say, drug unfamiliar.

**TABLE 6**

**Trends in Proportions of Seniors Disapproving of Drug Use**

Q. Do you disapprove of people (who are 18 or older) doing each of the following? <sup>b</sup>	Percentage "disapproving" <sup>a</sup>																	'90-'91 change
	Class of 1975	Class of 1976	Class of 1977	Class of 1978	Class of 1979	Class of 1980	Class of 1981	Class of 1982	Class of 1983	Class of 1984	Class of 1985	Class of 1986	Class of 1987	Class of 1988	Class of 1989	Class of 1990	Class of 1991	
Try marijuana once or twice	47.0	38.4	33.4	33.4	34.2	39.0	40.0	45.5	46.3	49.3	51.4	54.6	56.6	60.8	64.6	67.8	68.7	+0.9
Smoke marijuana occasionally	54.8	47.8	44.3	43.5	45.3	49.7	52.6	59.1	60.7	63.5	65.8	69.0	71.6	74.0	77.2	80.5	79.4	-1.1
Smoke marijuana regularly	71.9	69.5	65.5	67.5	69.2	74.6	77.4	80.6	82.5	84.7	85.5	86.6	89.2	89.3	89.8	91.0	89.3	-1.7
Try LSD once or twice	82.8	84.6	83.9	85.4	86.6	87.3	86.4	88.8	89.1	88.9	89.5	89.2	91.6	89.8	89.7	89.8	90.1	+0.3
Take LSD regularly	94.1	95.3	95.8	96.4	96.9	96.7	96.8	96.7	97.0	96.8	97.0	96.6	97.8	96.4	96.4	96.3	96.4	+0.1
Try cocaine once or twice	81.3	82.4	79.1	77.0	74.7	76.3	74.6	76.6	77.0	79.7	79.3	80.2	87.3	89.1	90.5	91.5	93.6	+2.1s
Take cocaine regularly	93.3	93.9	92.1	91.9	90.8	91.1	90.7	91.5	93.2	94.5	93.8	94.3	96.7	96.2	96.4	96.7	97.3	+0.6
Try heroin once or twice	91.5	92.6	92.5	92.0	93.4	93.5	93.5	94.6	94.3	94.0	94.0	93.3	96.2	95.0	95.4	95.1	96.0	+0.9
Take heroin occasionally	94.8	96.0	96.0	96.4	96.8	96.7	97.2	96.9	96.9	97.1	96.8	96.6	97.9	96.9	97.2	96.7	97.3	+0.6
Take heroin regularly	96.7	97.5	97.2	97.8	97.9	97.6	97.8	97.5	97.7	98.0	97.6	97.6	98.1	97.2	97.4	97.5	97.8	+0.3
Try amphetamines once or twice	74.8	75.1	74.2	74.8	75.1	75.4	71.1	72.6	72.3	72.8	74.9	76.5	80.7	82.5	83.3	85.3	86.5	+1.2
Take amphetamines regularly	92.1	92.8	92.5	93.5	94.4	93.0	91.7	92.0	92.6	93.6	93.3	93.5	95.4	94.2	94.2	95.5	96.0	+0.5
Try barbiturates once or twice	77.7	81.3	81.1	82.4	84.0	83.9	82.4	84.4	83.1	84.1	84.9	86.8	89.6	89.4	89.3	90.5	90.6	+0.1
Take barbiturates regularly	93.3	93.6	93.0	94.3	95.2	95.4	94.2	94.4	95.1	95.1	95.5	94.9	96.4	95.3	95.3	96.4	97.1	+0.7
Try one or two drinks of an alcoholic beverage (beer, wine, liquor)	21.6	18.2	15.6	15.6	15.8	16.0	17.2	18.2	18.4	17.4	20.3	20.9	21.4	22.6	27.3	29.4	29.8	+0.4
Take one or two drinks nearly every day	67.6	68.9	66.8	67.7	68.3	69.0	69.1	69.9	68.9	72.9	70.9	72.8	74.2	75.0	76.5	77.9	76.5	-1.4
Take four or five drinks nearly every day	88.7	90.7	88.4	90.2	91.7	90.8	91.8	90.9	90.0	91.0	92.0	91.4	92.2	92.8	91.6	91.9	90.6	-1.3
Have five or more drinks once or twice each weekend	60.3	58.6	57.4	56.2	56.7	55.6	55.5	58.8	56.6	59.6	60.4	62.4	62.0	65.3	66.5	68.9	67.4	-1.5
Smoke one or more packs of cigarettes per day	67.5	65.9	66.4	67.0	70.3	70.8	69.9	69.4	70.8	73.0	72.3	75.4	74.3	73.1	72.4	72.8	71.4	-1.4
Approx. N =	(2677)	(2957)	(3085)	(3686)	(3221)	(3261)	(3610)	(3651)	(3341)	(3254)	(3265)	(3113)	(3302)	(3311)	(2799)	(2566)	(2547)	

NOTE: Level of significance of difference between the two most recent classes: s = .05, ss = .01, sss = .001.

<sup>a</sup>Answer alternatives were: (1) Don't disapprove, (2) Disapprove, and (3) Strongly disapprove. Percentages are shown for categories (2) and (3) combined.

<sup>b</sup>The 1975 question asked about people who are "20 or older."

**TABLE 7**

**Trends in Perceived Availability of Drugs, All Seniors**

Q. How difficult do you think it would be for you to get each of the following types of drugs, if you wanted some?	Percentage saying drug would be "Fairly easy" or "Very easy" for them to get <sup>a</sup>																	
	Class of 1975	Class of 1976	Class of 1977	Class of 1978	Class of 1979	Class of 1980	Class of 1981	Class of 1982	Class of 1983	Class of 1984	Class of 1985	Class of 1986	Class of 1987	Class of 1988	Class of 1989	Class of 1990	Class of 1991	'90-'91 change
Marijuana	87.8	87.4	87.9	87.8	90.1	89.0	89.2	88.5	86.2	84.6	85.5	85.2	84.8	85.0	84.3	84.4	83.3	-1.1
Amyl & Butyl Nitrites	NA	NA	NA	NA	NA	NA	NA	NA	NA	NA	NA	NA	23.9	25.9	26.8	24.4	22.7	-1.7
LSD	46.2	37.4	34.5	32.2	34.2	35.3	35.0	34.2	30.9	30.6	30.5	28.5	31.4	33.3	38.3	40.7	39.5	-1.2
PCP	NA	NA	NA	NA	NA	NA	NA	NA	NA	NA	NA	NA	22.8	24.9	28.9	27.7	27.6	-0.1
Some other psychedelic	47.8	35.7	33.8	33.8	34.6	35.0	32.7	30.6	26.6	26.6	26.1	24.9	25.0	26.2	28.2	28.3	28.0	-0.3
Cocaine	37.0	34.0	33.0	37.8	45.5	47.9	47.5	47.4	43.1	45.0	48.9	51.5	54.2	55.0	58.7	54.5	51.0	-3.5s
"Crack"	NA	NA	NA	NA	NA	NA	NA	NA	NA	NA	NA	NA	41.1	42.1	47.0	42.4	39.9	-2.5
Cocaine powder	NA	NA	NA	NA	NA	NA	NA	NA	NA	NA	NA	NA	52.9	50.3	53.7	49.0	46.0	-3.0
Heroin	24.2	18.4	17.9	16.4	18.9	21.2	19.2	20.8	19.3	19.9	21.0	22.0	23.7	28.0	31.4	31.9	30.6	-1.3
Some other narcotic (including methadone)	34.5	26.9	27.8	26.1	28.7	29.4	29.6	30.4	30.0	32.1	33.1	32.2	33.0	35.8	38.3	38.1	34.6	-3.5s
Amphetamines	67.8	61.8	58.1	58.5	59.9	61.3	69.5	70.8	68.5	68.2	66.4	64.3	64.5	63.9	64.3	59.7	57.3	-2.4
Barbiturates	60.0	54.4	52.4	50.6	49.8	49.1	54.9	55.2	52.5	51.9	51.3	48.3	48.2	47.8	48.4	45.9	42.4	-3.5s
Tranquilizers	71.8	65.5	64.9	64.3	61.4	59.1	60.8	58.9	55.3	54.5	54.7	51.2	48.6	49.1	45.3	44.7	40.8	-3.9s
Approx. N =	(2627)	(2865)	(3065)	(3598)	(3172)	(3240)	(3578)	(3602)	(3385)	(3289)	(3274)	(3077)	(3271)	(3231)	(2806)	(2549)	(2476)	

NOTE: Level of significance of difference between the two most recent classes: s = .05, ss = .01, sss = .001. NA indicates data not available.

<sup>a</sup> Answer alternatives were: (1) Probably impossible, (2) Very difficult, (3) Fairly difficult, (4) Fairly easy, and (5) Very easy.



**TABLE 8**

**Trends in Lifetime<sup>e</sup> Prevalence of Various Types of Drugs  
Among College Students 1–4 Years Beyond High School  
(Entries are percentages)**

	Percent who used in lifetime												'90-'91 change
	1980	1981	1982	1983	1984	1985	1986	1987	1988	1989	1990	1991	
Approx. Wtd. N =	(1040)	(1130)	(1150)	(1170)	(1110)	(1080)	(1190)	(1220)	(1310)	(1300)	(1400)	(1410)	
Any Illicit Drug <sup>f</sup>	69.4	66.8	64.6	66.9	62.7	65.2	61.8	60.0	58.4	55.6	54.0	50.4	-3.6
Any Illicit Drug Other than Marijuana	42.2	41.3	39.6	41.7	38.6	40.0	37.5	35.7	33.4	30.5	28.4	25.8	-2.6
Marijuana	65.0	63.3	60.5	63.1	59.0	60.6	57.9	55.8	54.3	51.3	49.1	46.3	-2.8
Inhalants <sup>b</sup>	10.2	8.8	10.6	11.0	10.4	10.6	11.0	13.2	12.6	15.0	13.9	14.4	+0.5
Hallucinogens	15.0	12.0	15.0	12.2	12.9	11.4	11.2	10.9	10.2	10.7	11.2	11.3	+0.1
LSD	10.3	8.5	11.5	8.8	9.4	7.4	7.7	8.0	7.5	7.8	9.1	9.6	+0.5
Cocaine	22.0	21.5	22.4	23.1	21.7	22.9	23.3	20.6	15.8	14.6	11.4	9.4	-2.0
Crack <sup>c</sup>	NA	NA	NA	NA	NA	NA	NA	3.3	3.4	2.4	1.4	1.5	+0.1
MDMA ("Ecstasy") <sup>g</sup>	NA	NA	NA	NA	NA	NA	NA	NA	NA	3.8	3.9	2.0	-1.9
Heroin	0.9	0.6	0.5	0.3	0.5	0.4	0.4	0.6	0.3	0.7	0.3	0.5	+0.2
Other Opiates <sup>a</sup>	8.9	8.3	8.1	8.4	8.9	6.3	8.8	7.6	6.3	7.6	6.8	7.3	+0.5
Stimulants <sup>a</sup>	29.5	29.4	NA	NA	NA	NA	NA	NA	NA	NA	NA	NA	NA
Stimulants, Adjusted <sup>a,d</sup>	NA	NA	30.1	27.8	27.8	25.4	22.3	19.8	17.7	14.6	13.2	13.0	-0.2
Crystal methamphetamine <sup>h</sup>	NA	NA	NA	NA	NA	NA	NA	NA	NA	NA	1.0	1.3	+0.3
Sedatives <sup>a</sup>	13.7	14.2	14.1	12.2	10.8	9.3	8.0	6.1	4.7	4.1	NA	NA	NA
Barbiturates <sup>a</sup>	8.1	7.8	8.2	6.6	6.4	4.9	5.4	3.5	3.6	3.2	3.8	3.5	-0.3
Methaqualone <sup>a</sup>	10.3	10.4	11.1	9.2	9.0	7.2	5.8	4.1	2.2	2.4	NA	NA	NA
Tranquilizers <sup>a</sup>	15.2	11.4	11.7	10.8	10.8	9.8	10.7	8.7	8.0	8.0	7.1	6.8	-0.3
Alcohol	94.3	95.2	95.2	95.0	94.2	95.3	94.9	94.1	94.9	93.7	93.1	93.6	+0.5

NOTES: Level of significance of difference between the two most recent years:

s = .05, ss = .01, sss = .001.

NA indicates data not available.

<sup>a</sup>Only drug use which was not under a doctor's orders is included here.

<sup>b</sup>This drug was asked about in four of the five questionnaire forms in 1980–89, and in five of the six questionnaire forms in 1990–1991. Total N in 1991 (for college students) is 1170.

<sup>c</sup>This drug was asked about in two of the five questionnaire forms in 1987–89, and in all six questionnaire forms in 1990–1991.

<sup>d</sup>Based on the data from the revised question, which attempts to exclude the inappropriate reporting of non-prescription stimulants.

<sup>e</sup>Data are uncorrected for cross-time inconsistencies in the answers.

<sup>f</sup>Use of "any illicit drug" includes any use of marijuana, hallucinogens, cocaine, and heroin, or any use of other opiates, stimulants, barbiturates, methaqualone (until 1990), or tranquilizers not under a doctor's orders.

<sup>g</sup>This drug was asked about in two of the five questionnaire forms in 1989, and in two of the six questionnaire forms in 1990–1991. Total N in 1991 (for college students) is 470.

<sup>h</sup>This drug was asked about in two of the six questionnaire forms. Total N in 1991 (for college students) is 470.

**TABLE 9**

**Trends in Annual Prevalence of Various Types of Drugs  
Among College Students 1–4 Years Beyond High School**  
(Entries are percentages)

	Percent who used in last twelve months												'90-'91 change
	1980	1981	1982	1983	1984	1985	1986	1987	1988	1989	1990	1991	
Approx. Wtd. N =	(1040)	(1130)	(1150)	(1170)	(1110)	(1080)	(1190)	(1220)	(1310)	(1300)	(1400)	(1410)	
Any Illicit Drug <sup>e</sup>	56.2	55.0	49.5	49.8	45.1	46.3	45.0	40.1	37.4	36.7	33.3	29.2	-4.1s
Any Illicit Drug Other than Marijuana	32.3	31.7	29.9	29.9	27.2	26.7	25.0	21.3	19.2	16.4	15.2	13.2	-2.0
Marijuana	51.2	51.3	44.7	45.2	40.7	41.7	40.9	37.0	34.6	33.6	29.4	26.5	-2.9
Inhalants <sup>b</sup>	3.0	2.5	2.5	2.8	2.4	3.1	3.9	3.7	4.1	3.7	3.9	3.5	-0.4
Hallucinogens	8.5	7.0	8.7	6.5	6.2	5.0	6.0	5.9	5.3	5.1	5.4	6.3	+0.9
LSD	6.0	4.6	6.3	4.3	3.7	2.2	3.9	4.0	3.6	3.4	4.3	5.1	+0.8
Cocaine	16.8	16.0	17.2	17.3	16.3	17.3	17.1	13.7	10.0	8.2	5.6	3.6	-2.0s
Crack <sup>c</sup>	NA	NA	NA	NA	NA	NA	1.3	2.0	1.4	1.5	0.6	0.5	-0.1
MDMA ("Ecstasy") <sup>f</sup>	NA	NA	NA	NA	NA	NA	NA	NA	NA	2.3	2.3	0.9	-1.4
Heroin	0.4	0.2	0.1	0.0	0.1	0.2	0.1	0.2	0.2	0.1	0.1	0.1	0.0
Other Opiates <sup>a</sup>	5.1	4.3	3.8	3.8	3.8	2.4	4.0	3.1	3.1	3.2	2.9	2.7	-0.2
Stimulants <sup>a</sup>	22.4	22.2	NA	NA	NA	NA	NA	NA	NA	NA	NA	NA	NA
Stimulants, Adjusted <sup>a,d</sup>	NA	NA	21.1	17.3	15.7	11.9	10.3	7.2	6.2	4.6	4.5	3.9	-0.6
Crystal methamphetamine <sup>g</sup>	NA	NA	NA	NA	NA	NA	NA	NA	NA	NA	0.1	0.1	0.0
Sedatives <sup>a</sup>	8.3	8.0	8.0	4.5	3.5	2.5	2.6	1.7	1.5	1.0	NA	NA	NA
Barbiturates <sup>a</sup>	2.9	2.8	3.2	2.2	1.9	1.3	2.0	1.2	1.1	1.0	1.4	1.2	-0.2
Methaqualone <sup>a</sup>	7.2	6.5	6.6	3.1	2.5	1.4	1.2	0.8	0.5	0.2	NA	NA	NA
Tranquilizers <sup>a</sup>	6.9	4.8	4.7	4.6	3.5	3.6	4.4	3.8	3.1	2.6	3.0	2.4	-0.6
Alcohol	90.5	92.5	92.2	91.6	90.0	92.0	91.5	90.9	89.6	89.6	89.0	88.3	-0.7
Cigarettes	36.2	37.6	34.3	36.1	33.2	35.0	35.3	38.0	36.6	34.2	35.5	35.6	+0.1

NOTES: Level of significance of difference between the two most recent years:  
s = .05, ss = .01, sss = .001.  
NA indicates data not available.

<sup>a</sup> Only drug use which was not under a doctor's orders is included here.

<sup>b</sup> This drug was asked about in four of the five questionnaire forms in 1980–89, and in five of the six questionnaire forms in 1990–1991. Total N in 1991 (for college students) is 1170.

<sup>c</sup> This drug was asked about in one of the five questionnaire forms in 1986, in two of the five questionnaire forms in 1987–89, and in all six forms in 1990–1991.

<sup>d</sup> Based on the data from the revised question, which attempts to exclude the inappropriate reporting of non-prescription stimulants.

<sup>e</sup> Use of "any illicit drug" includes any use of marijuana, hallucinogens, cocaine, and heroin, or any use of other opiates, stimulants, barbiturates, methaqualone (until 1990), or tranquilizers not under a doctor's orders.

<sup>f</sup> This drug was asked about in two of the five questionnaire forms in 1989, and in two of the six questionnaire forms in 1990–1991. Total N in 1991 (for college students) is 470.

<sup>g</sup> This drug was asked about in two of the six questionnaire forms. Total N in 1991 (for college students) is 470.

**TABLE 10**

**Trends in Thirty-Day Prevalence of Various Types of Drugs  
Among College Students 1–4 Years Beyond High School**  
(Entries are percentages)

	Percent who used in last thirty days												'90-'91 change
	1980	1981	1982	1983	1984	1985	1986	1987	1988	1989	1990	1991	
Approx. Wtd. N =	(1040)	(1130)	(1150)	(1170)	(1110)	(1080)	(1190)	(1220)	(1310)	(1300)	(1400)	(1410)	
Any Illicit Drug <sup>e</sup>	38.4	37.6	31.3	29.3	27.0	26.1	25.9	22.4	18.5	18.2	15.2	15.2	0.0
Any Illicit Drug Other than Marijuana	20.7	18.6	17.1	13.9	13.8	11.8	11.6	8.8	8.5	6.9	4.4	4.3	-0.1
Marijuana	34.0	33.2	26.8	26.2	23.0	23.6	22.3	20.3	16.8	16.3	14.0	14.1	+0.1
Inhalants <sup>b</sup>	1.5	0.9	0.8	0.7	0.7	1.0	1.1	0.9	1.3	0.8	1.0	0.9	-0.1
Hallucinogens	2.7	2.3	2.6	1.8	1.8	1.3	2.2	2.0	1.7	2.3	1.4	1.2	-0.2
LSD	1.4	1.4	1.7	0.9	0.8	0.7	1.4	1.4	1.1	1.4	1.1	0.8	-0.3
Cocaine	6.9	7.3	7.9	6.5	7.6	6.9	7.0	4.6	4.2	2.8	1.2	1.0	-0.2
Crack <sup>c</sup>	NA	NA	NA	NA	NA	NA	NA	0.4	0.5	0.2	0.1	0.3	+0.2
MDMA ("Ecstasy") <sup>f</sup>	NA	NA	NA	NA	NA	NA	NA	NA	NA	0.3	0.6	0.2	-0.4
Heroin	0.3	0.0	0.0	0.0	0.0	0.0	0.0	0.1	0.1	0.1	0.0	0.1	+0.1
Other Opiates <sup>a</sup>	1.8	1.1	0.9	1.1	1.4	0.7	0.6	0.8	0.8	0.7	0.5	0.6	+0.1
Stimulants <sup>a</sup>	13.4	12.3	NA	NA	NA	NA	NA	NA	NA	NA	NA	NA	NA
Stimulants, Adjusted <sup>a,d</sup>	NA	NA	9.9	7.0	5.5	4.2	3.7	2.3	1.8	1.3	1.4	1.0	-0.4
Crystal methamphetamine <sup>g</sup>	NA	NA	NA	NA	NA	NA	NA	NA	NA	NA	0.0	0.0	0.0
Sedatives <sup>a</sup>	3.8	3.4	2.5	1.1	1.0	0.7	0.6	0.6	0.6	0.2	NA	NA	NA
Barbiturates <sup>a</sup>	0.9	0.8	1.0	0.5	0.7	0.4	0.6	0.5	0.5	0.2	0.2	0.3	+0.1
Methaqualone <sup>a</sup>	3.1	3.0	1.9	0.7	0.5	0.3	0.1	0.2	0.1	0.0	NA	NA	NA
Tranquilizers <sup>a</sup>	2.0	1.4	1.4	1.2	1.1	1.4	1.9	1.0	1.1	0.8	0.5	0.6	+0.1
Alcohol	81.8	81.9	82.8	80.3	79.1	80.3	79.7	78.4	77.0	76.2	74.5	74.7	+0.2
Cigarettes	25.8	25.9	24.4	24.7	21.5	22.4	22.4	24.0	22.6	21.1	21.5	23.2	+1.7

NOTES: Level of significance of difference between the two most recent years:  
s = .05, ss = .01, sss = .001.  
NA indicates data not available.

<sup>a</sup> Only drug use which was not under a doctor's orders is included here.

<sup>b</sup> This question was asked in four of the five questionnaire forms in 1980–89, and in five of the six questionnaire forms in 1990–1991. Total N in 1991 (for college students) is 1170.

<sup>c</sup> This question was asked in two of the five questionnaire forms in 1987–89, and in all six questionnaire forms in 1990–1991.

<sup>d</sup> Based on the data from the revised question, which attempts to exclude the inappropriate reporting of non-prescription stimulants.

<sup>e</sup> Use of "any illicit drug" includes any use of marijuana, hallucinogens, cocaine, and heroin, or any use of other opiates, stimulants, barbiturates, methaqualone (until 1990), or tranquilizers not under a doctor's orders.

<sup>f</sup> This drug was asked about in two of the five questionnaire forms in 1989, and in two of the six questionnaire forms in 1990–1991. Total N in 1991 (for college students) is 470.

<sup>g</sup> This drug was asked about in two of the six questionnaire forms. Total N in 1991 (for college students) is 470.

TABLE 11

**Trends in Thirty-Day Prevalence of Daily Use  
for Marijuana, Cocaine, Stimulants, Alcohol, and Cigarettes  
Among College Students 1-4 Years Beyond High School**

(Entries are percentages)

Percent who used daily in last thirty days

	1980	1981	1982	1983	1984	1985	1986	1987	1988	1989	1990	1991	'90-'91 change
Approx. Wtd. N =	(1040)	(1130)	(1150)	(1170)	(1110)	(1080)	(1190)	(1220)	(1310)	(1300)	(1400)	(1410)	
Marijuana	7.2	5.6	4.2	3.8	3.6	3.1	2.1	2.3	1.8	2.6	1.7	1.8	+0.1
Cocaine	0.2	0.0	0.3	0.1	0.4	0.1	0.1	0.1	0.1	0.0	0.0	0.0	0.0
Stimulants <sup>a</sup>	0.5	0.4	NA	NA	NA	NA	NA	NA	NA	NA	NA	NA	NA
Stimulants, Adjusted <sup>a,b</sup>	NA	NA	0.3	0.2	0.2	0.0	0.1	0.1	0.0	0.0	0.0	0.0	0.0
Alcohol													
Daily	6.5	5.5	6.1	6.1	6.6	5.0	4.6	6.0	4.9	4.0	3.8	4.1	+0.3
5+ drinks in a row in last 2 weeks	43.9	43.6	44.0	43.1	45.4	44.6	45.0	42.8	43.2	41.7	41.0	42.8	+1.8
Cigarettes													
Daily	18.3	17.1	16.2	15.3	14.7	14.2	12.7	13.9	12.4	12.2	12.1	13.8	+1.7
Half-pack or more per day	12.7	11.9	10.5	9.6	10.2	9.4	8.3	8.2	7.3	6.7	8.2	8.0	-0.2

NOTES: For all drugs not included here, daily use is below 0.5% in all years. Level of significance of difference between the two most recent years:

s = .05, ss = .01, sss = .001.

NA indicates data not available, NT indicates data not yet tabulated.

<sup>a</sup> Only drug use which was not under a doctor's orders is included here.

<sup>b</sup> Based on the data from the revised question, which attempts to exclude the inappropriate reporting of non-prescription stimulants.

TABLE 12

**Trends in Lifetime<sup>k</sup> Prevalence of Various Types of Drugs  
Among Respondents of Modal Age 19–28  
(Entries are percentages)**

	Percent who used in lifetime						'90-'91 change
	1986	1987	1988	1989	1990	1991	
Approx. Wtd. N =	(6900)	(6800)	(6700)	(6600)	(6700)	(6600)	
Any Illicit Drug <sup>h</sup>	70.5	69.9	67.9	66.4	64.5	62.2	-2.3 <sup>ss</sup>
Any Illicit Drug Other than Marijuana	48.4	47.0	44.6	42.7	40.8	37.8	-3.0 <sup>sss</sup>
Marijuana	66.5	66.0	63.8	62.8	60.2	58.6	-1.6
Inhalants <sup>b</sup>	12.3	12.7	12.6	13.2	12.5	13.4	+0.9
Inhalants, Adjusted <sup>b,e</sup>	18.6	15.7	15.0	NA	13.5	14.1	+0.6
Nitrites <sup>f</sup>	12.6	6.9	6.2	NA	1.9	1.4	-0.5
Hallucinogens	18.5	17.1	17.0	15.9	16.1	15.7	-0.4
Hallucinogens, Adjusted <sup>g</sup>	20.1	17.2	17.2	NA	16.5	16.0	-0.5
LSD <sup>f</sup>	14.6	13.7	13.8	12.7	13.5	13.5	0.0
PCP <sup>f</sup>	8.4	4.8	5.0	NA	2.5	3.1	+0.6
Cocaine	32.0	29.3	28.2	25.8	23.7	21.0	-2.7 <sup>sss</sup>
Crack <sup>c</sup>	NA	6.3	6.9	6.1	5.1	4.8	-0.3
Other Cocaine <sup>j</sup>	NA	28.2	25.2	25.4	22.1	19.8	-2.3 <sup>sss</sup>
MDMA ("Ecstasy") <sup>i</sup>	NA	NA	NA	3.3	3.7	3.2	-0.5
Heroin	1.3	1.3	1.1	1.0	0.9	0.9	0.0
Other Opiates <sup>a</sup>	10.7	10.6	9.8	9.6	9.4	9.3	-0.1
Stimulants, Adjusted <sup>a,d</sup>	32.3	30.8	28.8	25.3	24.4	22.4	-2.0 <sup>ss</sup>
Crystal Methamphetamine ("Ice") <sup>i</sup>	NA	NA	NA	NA	2.5	2.9	+0.4
Sedatives <sup>a</sup>	16.7	15.0	13.2	12.1	NA	NA	NA
Barbiturates <sup>a</sup>	11.1	9.7	8.9	7.9	8.7	8.2	-0.5
Methaqualone <sup>a</sup>	13.1	11.6	9.7	8.7	NA	NA	NA
Tranquilizers <sup>a</sup>	17.6	16.5	15.1	13.5	12.9	11.8	-1.1 <sup>s</sup>
Alcohol	94.8	94.9	94.8	94.5	94.3	94.1	-0.2
Cigarettes	NA	NA	NA	NA	NA	NA	NA
Steroids <sup>f</sup>	NA	NA	NA	1.1	1.2	1.7	+0.5

NOTES: Level of significance of difference between the two most recent years:  
s = .05, ss = .01, sss = .001.

NA indicates data not available, NT indicates data not yet tabulated.

<sup>a</sup> Only drug use which was not under a doctor's orders is included here.

<sup>b</sup> This drug was asked about in four of the five questionnaire forms in 1986–89, and five of the six questionnaire forms in 1990–1991. Total N in 1991 is approximately 5400.

<sup>c</sup> This drug was asked about in two of the five questionnaire forms in 1987–89, and in all six questionnaire forms in 1990–1991.

<sup>d</sup> Based on the data from the revised question, which attempts to exclude the inappropriate reporting of non-prescription stimulants.

<sup>e</sup> Adjusted for underreporting of amyl and butyl nitrites. See text.

<sup>f</sup> This drug was asked about in one questionnaire form. Total N in 1991 is approximately 1300.

<sup>g</sup> Adjusted for underreporting of PCP. See text.

<sup>h</sup> Use of "any illicit drug" includes any use of marijuana, hallucinogens, cocaine, and heroin, or any use of other opiates, stimulants, barbiturates, methaqualone (until 1990), or tranquilizers not under a doctor's orders.

<sup>i</sup> This drug was asked about in two questionnaire forms. Total N in 1991 is approximately 2600.

<sup>j</sup> This drug was asked about in one of the five questionnaire forms in 1987–89, and in four of the six questionnaire forms in 1990–1991. Total N in 1991 is approximately 4100.

<sup>k</sup> Lifetime prevalence is uncorrected for any cross-time inconsistencies in responding. See text.

**TABLE 13**

**Trends in Annual Prevalence of Various Types of Drugs  
Among Respondents of Modal Age 19–28  
(Entries are percentages)**

	Percent who used in last twelve months						'90-'91 change
	1986	1987	1988	1989	1990	1991	
Approx. Wtd. N =	(6900)	(6800)	(6700)	(6600)	(6700)	(6600)	
Any Illicit Drug <sup>h</sup>	41.9	39.3	36.3	32.8	30.7	27.0	-3.7 <sup>sss</sup>
Any Illicit Drug Other than Marijuana	27.0	23.9	21.3	18.3	16.7	14.3	-2.4 <sup>sss</sup>
Marijuana	36.5	34.8	31.8	29.0	26.1	23.8	-2.3 <sup>ss</sup>
Inhalants <sup>b</sup>	1.9	2.1	1.8	1.9	1.9	2.0	+0.1
Inhalants, Adjusted <sup>b,e</sup>	3.0	2.8	2.4	NA	2.1	2.2	+0.1
Nitrites <sup>f</sup>	2.0	1.3	1.0	NA	0.4	0.2	-0.2
Hallucinogens	4.5	4.0	3.9	3.6	4.1	4.5	+0.4
Hallucinogens, Adjusted <sup>g</sup>	4.9	4.1	3.9	NA	4.2	4.6	+0.4
LSD <sup>f</sup>	3.0	2.9	2.9	2.7	3.3	3.8	+0.5
PCP <sup>f</sup>	0.8	0.4	0.4	NA	0.2	0.3	+0.1
Cocaine	19.7	15.7	13.8	10.8	8.6	6.2	-2.4 <sup>sss</sup>
Crack <sup>c</sup>	3.2	3.1	3.1	2.5	1.6	1.2	-0.4 <sup>s</sup>
Other Cocaine <sup>j</sup>	NA	13.6	11.9	10.3	8.1	5.4	-2.7 <sup>sss</sup>
MDMA ("Ecstasy") <sup>i</sup>	NA	NA	NA	1.4	1.5	0.8	-0.7 <sup>s</sup>
Heroin	0.2	0.2	0.2	0.2	0.1	0.1	0.0
Other Opiates <sup>a</sup>	3.1	3.1	2.7	2.8	2.7	2.5	-0.2
Stimulants, Adjusted <sup>a,d</sup>	10.6	8.7	7.3	5.8	5.2	4.3	-0.9 <sup>s</sup>
Crystal Methamphetamine ("Ice") <sup>i</sup>	NA	NA	NA	NA	0.4	0.3	-0.1
Sedatives <sup>a</sup>	3.0	2.5	2.1	1.8	NA	NA	NA
Barbiturates <sup>a</sup>	2.3	2.1	1.8	1.7	1.9	1.8	-0.1
Methaqualone <sup>a</sup>	1.3	0.9	0.5	0.3	NA	NA	NA
Tranquilizers <sup>a</sup>	5.4	5.1	4.2	3.7	3.7	3.5	-0.2
Alcohol	88.6	89.4	88.6	88.1	87.4	86.9	-0.5
Cigarettes	40.1	40.3	37.7	38.0	37.1	37.7	+0.6
Steroids <sup>f</sup>	NA	NA	NA	0.5	0.3	0.5	+0.2

NOTES: Level of significance of difference between the two most recent years:  
s = .05, ss = .01, sss = .001.

NA indicates data not available, NT indicates data not yet tabulated.

<sup>a</sup>Only drug use which was not under a doctor's orders is included here.

<sup>b</sup>This drug was asked about in four of the five questionnaire forms in 1986–89 (N was four-fifths of N indicated), and five of the six questionnaire forms in 1990–1991. Total N in 1991 is approximately 5400.

<sup>c</sup>This drug was asked about in one of the five questionnaire forms in 1986, in two of the five questionnaire forms in 1987–89, and in all six questionnaire forms in 1990–1991.

<sup>d</sup>Based on the data from the revised question, which attempts to exclude the inappropriate reporting of non-prescription stimulants.

<sup>e</sup>Adjusted for underreporting of amyl and butyl nitrites. See text.

<sup>f</sup>This drug was asked about in one questionnaire form. Total N in 1990 is approximately 1300.

<sup>g</sup>Adjusted for underreporting of PCP. See text.

<sup>h</sup>Use of "any illicit drug" includes any use of marijuana, hallucinogens, cocaine, and heroin, or any use of other opiates, stimulants, barbiturates, methaqualone (until 1990), or tranquilizers not under a doctor's orders.

<sup>i</sup>This drug was asked about in two questionnaire forms. Total N in 1991 is approximately 2600.

<sup>j</sup>This drug was asked about in one of the five questionnaire forms in 1987–89, and in four of the six questionnaire forms in 1990–1991. Total N in 1991 is approximately 4100.

TABLE 14

**Trends in Thirty-Day Prevalence of Various Types of Drugs  
Among Respondents of Modal Age 19–28**  
(Entries are percentages)

	Percent who used in last thirty days						'90-'91 change
	1986	1987	1988	1989	1990	1991	
Approx. Wtd. N =	(6900)	(6800)	(6700)	(6600)	(6700)	(6600)	
Any Illicit Drug <sup>h</sup>	25.8	23.4	20.5	17.7	15.9	15.1	-0.8
Any Illicit Drug <sup>h</sup> Other than Marijuana	13.0	10.7	9.5	7.5	6.0	5.4	-0.6
Marijuana	22.0	20.7	17.9	15.5	13.9	13.5	-0.4
Inhalants <sup>b</sup>	0.4	0.6	0.6	0.5	0.6	0.5	-0.1
Inhalants, Adjusted <sup>b,e</sup>	0.7	0.9	0.9	NA	0.7	0.6	-0.1
Nitrites <sup>f</sup>	0.5	0.5	0.4	NA	0.1	0.0	-0.1
Hallucinogens	1.3	1.2	1.1	1.1	0.9	1.1	+0.2
Hallucinogens, Adjusted <sup>g</sup>	1.4	1.2	1.1	NA	1.0	1.2	+0.2
LSD <sup>f</sup>	0.9	0.8	0.8	0.8	0.6	0.8	+0.2
PCP <sup>f</sup>	0.2	0.1	0.3	NA	0.2	0.1	-0.1
Cocaine	8.2	6.0	5.7	3.8	2.4	2.0	-0.4
Crack <sup>c</sup>	NA	1.0	1.2	0.7	0.4	0.4	0.0
Other Cocaine <sup>j</sup>	NA	4.8	4.8	3.4	2.1	1.8	-0.3
MDMA <sup>i</sup>	NA	NA	NA	0.4	0.2	0.1	-0.1
Heroin	0.1	0.1	0.1	0.1	0.1	0.0	-0.1
Other Opiates <sup>a</sup>	0.9	0.9	0.7	0.7	0.7	0.6	-0.1
Stimulants, Adjusted <sup>a,d</sup>	4.0	3.2	2.7	2.1	1.9	1.5	-0.4
Crystal Methamphetamine("Ice") <sup>i</sup>	NA	NA	NA	NA	0.1	0.0	-0.1
Sedatives <sup>a</sup>	0.9	0.8	0.7	0.5	NA	NA	NA
Barbiturates <sup>a</sup>	0.7	0.7	0.7	0.5	0.6	0.5	-0.1
Methaqualone <sup>a</sup>	0.3	0.2	0.1	0.0	NA	NA	NA
Tranquilizers <sup>a</sup>	1.8	1.6	1.4	1.2	1.1	0.9	-0.2
Alcohol	75.1	75.4	74.0	72.4	71.2	70.6	-0.6
Cigarettes	31.1	30.9	28.9	28.6	27.7	28.2	+0.5
Steroids <sup>f</sup>	NA	NA	NA	0.2	0.1	0.2	+0.1

NOTES: Level of significance of difference between the two most recent years:  
s = .05, ss = .01, sss = .001.

NA indicates data not available, NT indicates data not yet tabulated.

<sup>a</sup>Only drug use which was not under a doctor's orders is included here.

<sup>b</sup>This drug was asked about in four of the five questionnaire forms in 1986–89 (N was four-fifths of N indicated), and five of the six questionnaire forms in 1990–1991. Total N in 1991 is approximately 5400.

<sup>c</sup>This drug was asked about in two of the five questionnaire forms in 1987–89, and in all six questionnaire forms in 1990–1991.

<sup>d</sup>Based on the data from the revised question, which attempts to exclude the inappropriate reporting of non-prescription stimulants.

<sup>e</sup>Adjusted for underreporting of amyl and butyl nitrites. See text.

<sup>f</sup>This drug was asked about in one questionnaire form. Total N in 1991 is approximately 1300.

<sup>g</sup>Adjusted for underreporting of PCP. See text.

<sup>h</sup>Use of "any illicit drug" includes any use of marijuana, hallucinogens, cocaine, and heroin, or any use of other opiates, stimulants, barbiturates, methaqualone (until 1990), or tranquilizers not under a doctor's orders.

<sup>i</sup>This drug was asked about in two questionnaire forms. Total N in 1991 is approximately 2600.

<sup>j</sup>This drug was asked about in one of the five questionnaire forms in 1987–89, and in four of the six questionnaire forms in 1990–1991. Total N in 1991 is approximately 4100.

TABLE 15

Trends in Thirty-Day Prevalence of Daily Use of Various Types of Drugs  
Among Respondents of Modal Age 19–28  
(Entries are percentages)

	Approx. Wtd. N =	Percent using daily in last thirty days					'90-'91 change <sup>h</sup>	
		1986 (6900)	1987 (6800)	1988 (6700)	1989 (6600)	1990 (6700)		1991 (6600)
Marijuana		4.1	4.2	3.3	3.2	2.5	2.3	-0.2
Inhalants <sup>b</sup>		0.0	0.0	0.0	0.1	0.0	0.0	0.0
Inhalants, Adjusted <sup>b,e</sup>		0.0	0.0	0.0	NA	0.1	0.0	-0.1
Nitrites <sup>f</sup>		0.0	0.0	0.1	NA	0.1	0.0	-0.1
Hallucinogens		0.0	0.0	0.0	0.0	0.0	0.0	0.0
Hallucinogens, Adjusted <sup>g</sup>		0.0	0.0	0.0	NA	0.0	0.0	0.0
LSD <sup>f</sup>		0.0	0.0	0.0	0.0	0.0	0.0	0.0
PCP <sup>f</sup>		0.0	0.0	0.1	NA	0.1	0.0	-0.1
Cocaine		0.2	0.1	0.2	0.1	0.0	0.1	+0.1
Crack <sup>c</sup>		NA	0.0	0.1	0.0	0.0	0.0	0.0
Other Cocaine <sup>j</sup>		NA	0.1	0.1	0.0	0.0	0.1	+0.1
MDMA ("Ecstasy") <sup>i</sup>		NA	NA	NA	0.0	0.0	0.0	0.0
Heroin		0.0	0.0	0.0	0.0	0.0	0.0	0.0
Other Opiates <sup>a</sup>		0.0	0.0	0.0	0.0	0.0	0.0	0.0
Stimulants, Adjusted <sup>a,d</sup>		0.2	0.2	0.1	0.1	0.1	0.1	0.0
Crystal Methamphetamine ("Ice") <sup>i</sup>		NA	NA	NA	NA	0.0	0.0	0.0
Sedatives <sup>a</sup>		0.0	0.0	0.1	0.0	NA	NA	NA
Barbiturates <sup>a</sup>		0.0	0.0	0.1	0.0	0.0	0.0	0.0
Methaqualone <sup>a</sup>		0.0	0.0	0.0	0.0	NA	NA	NA
Tranquilizers <sup>a</sup>		0.0	0.0	0.0	0.0	0.0	0.0	0.0
Alcohol								
Daily		6.1	6.6	6.1	5.5	4.7	4.9	+0.2
5+ drinks in a row in last 2 weeks		36.1	36.2	35.2	34.8	34.3	34.7	+0.4
Cigarettes								
Daily		25.2	24.8	22.7	22.4	21.3	21.7	+0.4
Half-pack or more per day		20.2	19.8	17.7	17.3	16.7	16.0	-0.7
Steroids <sup>f</sup>		NA	NA	NA	0.0	0.0	0.0	0.0

NOTES: Level of significance of difference between the two most recent years:  
s = .05, ss = .01, sss = .001.

NA indicates data not available, NT indicates data not yet tabulated. <sup>a</sup>Only drug use which was not under a doctor's orders is included here.

<sup>b</sup>This drug was asked about in four of the five questionnaire forms in 1986–89, and five of the six questionnaire forms in 1990–1991. Total N in 1991 is approximately 5400.

<sup>c</sup>This drug was asked about in two of the five questionnaire forms in 1987–89, and in all six questionnaire forms in 1990–1991.

<sup>d</sup>Based on the data from the revised question, which attempts to exclude the inappropriate reporting of non-prescription stimulants.

<sup>e</sup>Adjusted for underreporting of amyl and butyl nitrites. See text.

<sup>f</sup>This drug was asked about in one questionnaire form. Total N in 1991 is approximately 1300.

<sup>g</sup>Adjusted for underreporting of PCP. See text.

<sup>h</sup>Any apparent inconsistency between the change estimate and the prevalence estimates for the two most recent classes is due to rounding.

<sup>i</sup>This drug was asked about in two questionnaire forms. Total N in 1991 is approximately 2600.

<sup>j</sup>This drug was asked about in one of the five questionnaire forms in 1987–89, and in four of the six questionnaire forms in 1990–1991. Total N in 1991 is approximately 4100.



**TABLE 16**

**A Comparison of Drug Usage Rates for 8th, 10th, and 12th Graders in 1991\***

	Lifetime			Annual			30-Day			Daily		
	8th	10th	12th	8th	10th	12th	8th	10th	12th	8th	10th	12th
Approx. N =	17500	14800	15000	17500	14800	15000	17500	14800	15000	17500	14800	15000
Marijuana/Hashish	10.2	23.4	36.7	6.2	16.5	23.9	3.2	8.7	13.8	0.2	0.8	2.0
Inhalants	17.6	15.7	17.6	9.0	7.1	6.6	4.4	2.7	2.4	0.2	0.1	0.2
Inhalants adj.	—	—	18.0	—	—	6.9	—	—	2.6	—	—	0.5
Amyl/Butyl Nitrites	—	—	1.6	—	—	0.9	—	—	0.4	—	—	0.2
Hallucinogens	3.2	6.1	9.6	1.9	4.0	5.8	0.8	1.6	2.2	0.1	0.0	0.1
Hallucinogens adj.	—	—	10.0	—	—	6.1	—	—	2.4	—	—	0.1
LSD	2.7	5.6	8.8	1.7	3.7	5.2	0.6	1.5	1.9	0.0	0.0	0.1
PCP	—	—	2.9	—	—	1.4	—	—	0.5	—	—	0.1
Other Psychs	1.4	2.2	3.7	0.7	1.3	2.0	0.3	0.4	0.7	0.0	0.0	0.0
Cocaine	2.3	4.1	7.8	1.1	2.2	3.5	0.5	0.7	1.4	0.1	0.1	0.1
"Crack"	1.3	1.7	3.1	0.7	0.9	1.5	0.3	0.3	0.7	0.0	0.0	0.1
Other Cocaine	2.0	3.8	7.0	1.0	2.1	3.2	0.5	0.6	1.2	0.0	0.0	0.1
Heroin	1.2	1.2	0.9	0.7	0.5	0.4	0.3	0.2	0.2	0.0	0.0	0.0
Stimulants, adj.	10.5	13.2	15.4	6.2	8.2	8.2	2.6	3.3	3.2	0.1	0.1	0.2
Ice	—	—	3.3	—	—	1.4	—	—	0.6	—	—	0.1
Tranquilizers	3.8	5.8	7.2	1.8	3.2	3.6	0.8	1.2	1.4	0.0	0.0	0.1
Alcohol												
Any use	70.1	83.8	88.0	54.0	72.3	77.7	25.1	42.8	54.0	0.5	1.3	3.6
5+ drinks in last 2 weeks	—	—	—	—	—	—	—	—	—	12.9	22.9	29.8
Cigarettes												
Any use	44.0	55.1	63.1	—	—	—	14.3	20.8	28.3	7.2	12.6	18.5
1/2pack+/day	—	—	—	—	—	—	—	—	—	3.1	6.5	10.7
Steroids	1.9	1.8	2.1	1.0	1.1	1.4	0.4	0.6	0.8	0.0	0.1	0.1
Smokeless Tobacco	22.2	28.2	—	—	—	—	6.9	10.0	—	—	—	—
Been Drunk	26.7	50.0	65.4	17.5	40.1	52.7	7.6	20.5	31.6	0.2	0.2	0.9

\*See Table 1 for relevant footnotes. For 8th and 10th graders, all questions are based on the full sample except for smokeless tobacco which is based on one of two questionnaire forms (N is approximately one-half of N indicated).

**FIGURE 1**  
**Marijuana: Trends in Perceived Availability,**  
**Perceived Risk of Regular Use,**  
**and Prevalence of Use in Past Thirty-Days**  
**All Seniors**

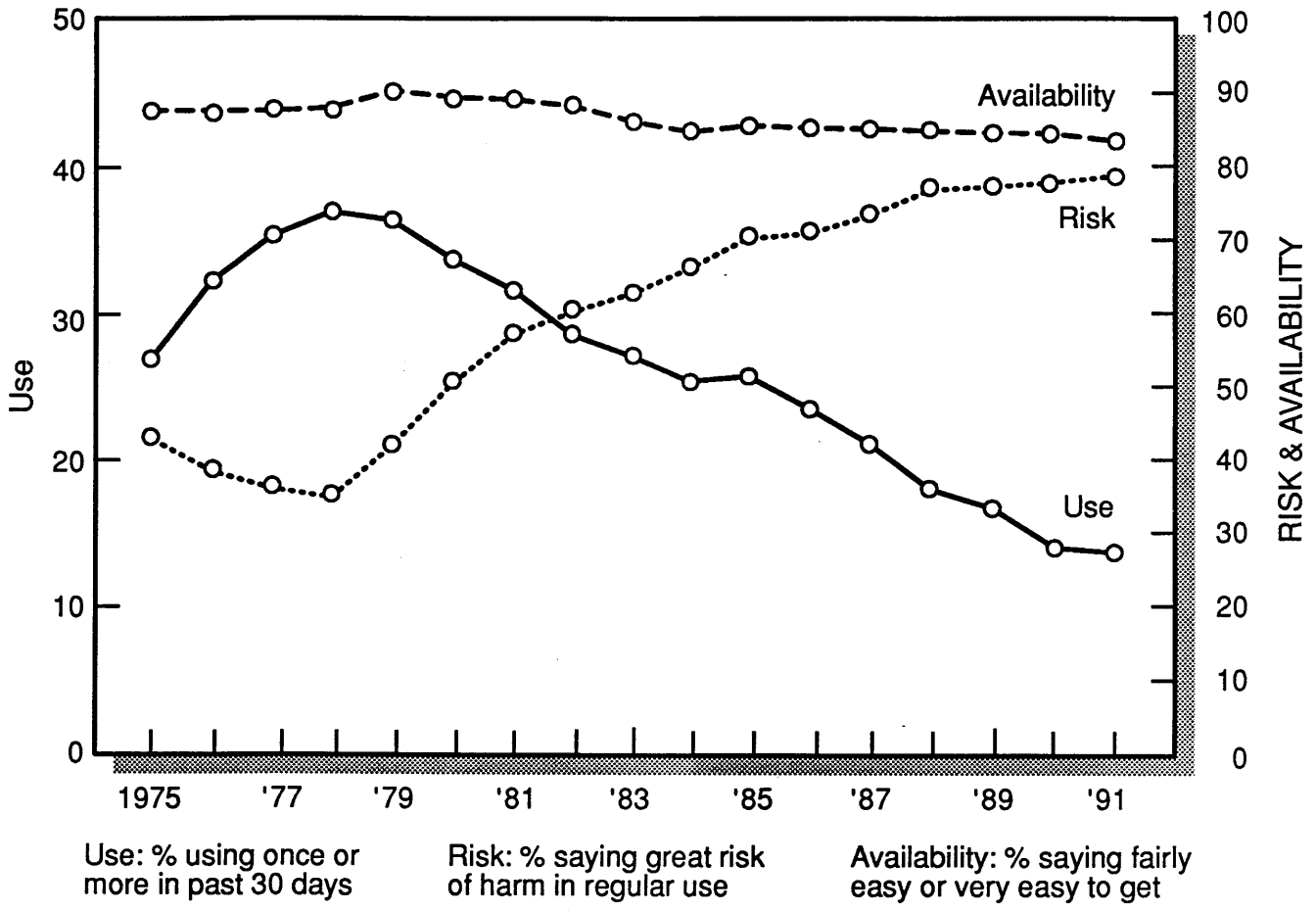
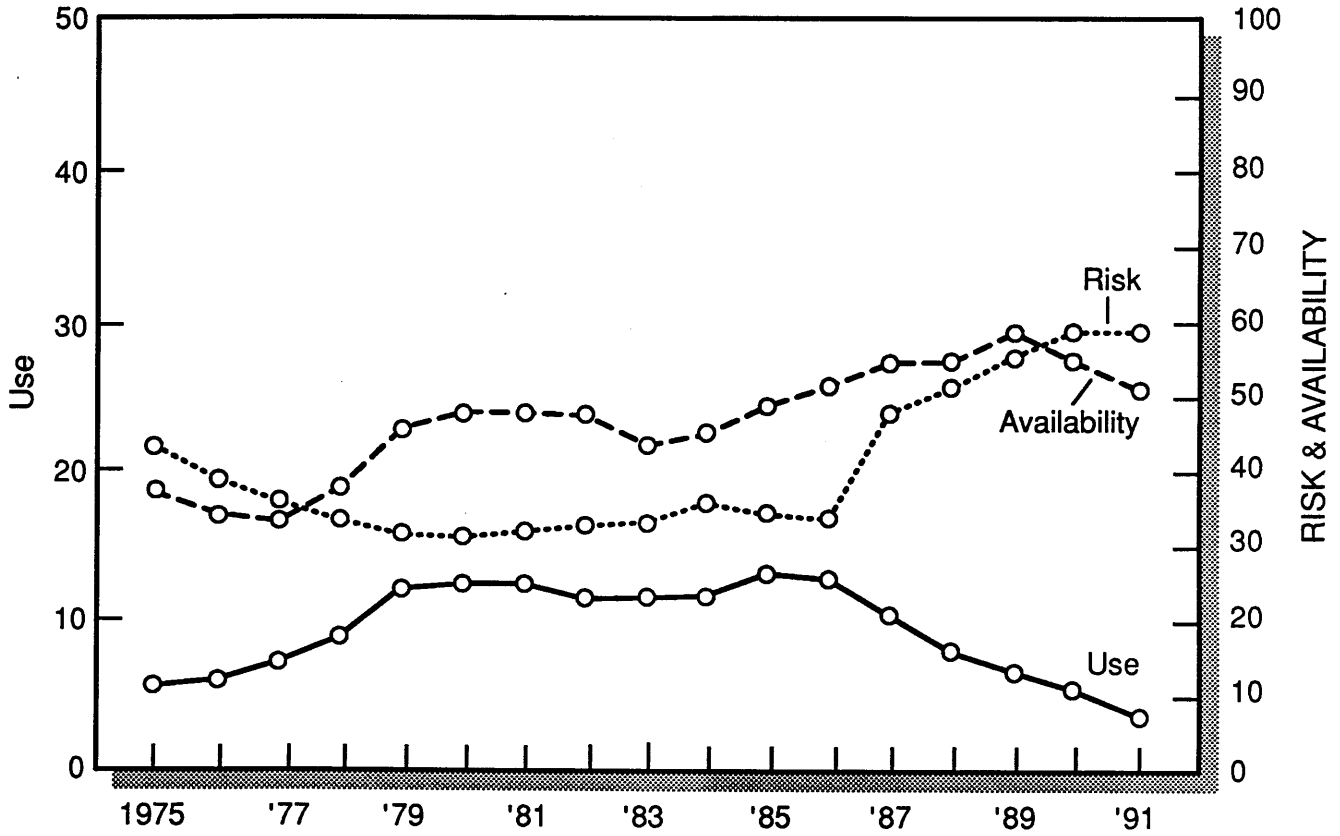


FIGURE 2

**Cocaine: Trends in Perceived Availability,  
Perceived Risk of Trying,  
and Prevalence of Use in Past Year  
All Seniors**



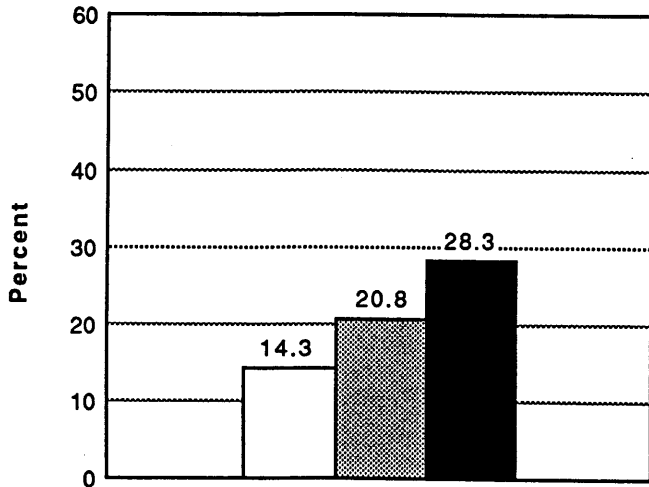
Use: % using once or more in past 12 months

Risk: % saying great risk of harm in using once or twice

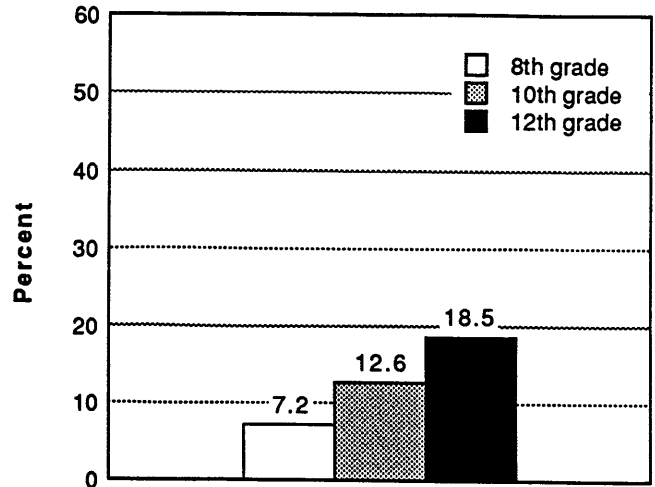
Availability: % saying fairly easy or very easy to get

Figure 3

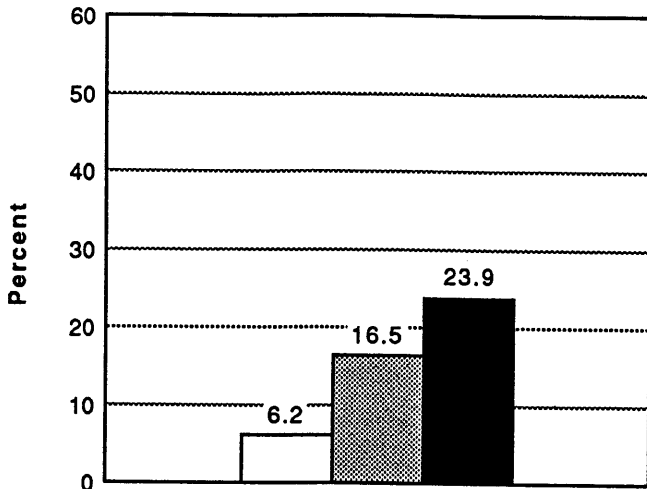
Use of Selected Drugs by 8th, 10th, and 12th Graders in 1991



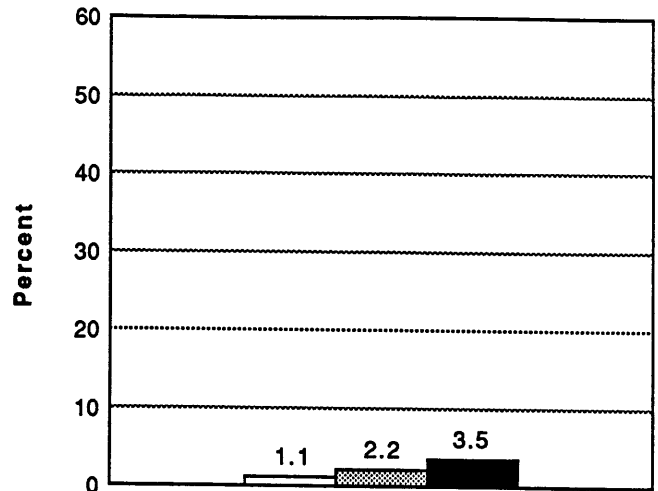
Use of Cigarettes in Past Thirty Days



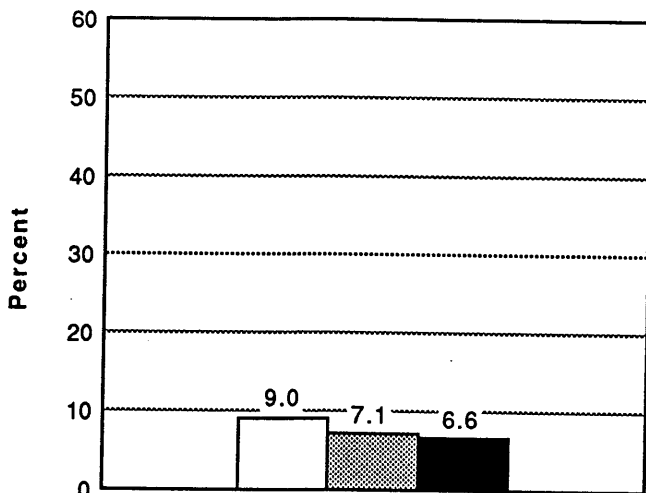
Daily Use of Cigarettes in Past Thirty Days



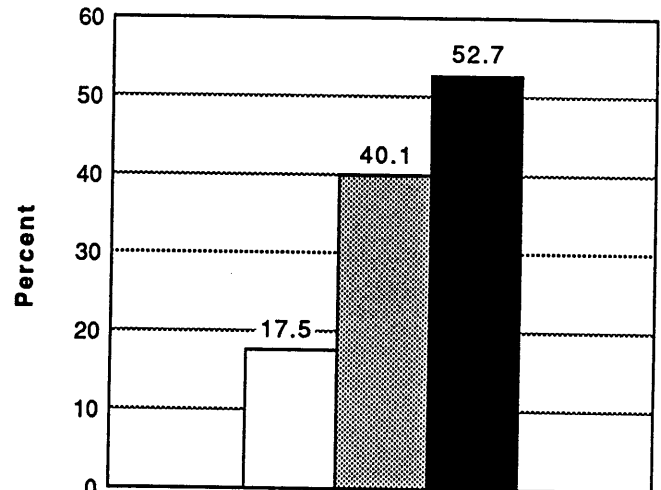
Use of Marijuana in Past Year



Use of Cocaine in Past Year



Use of Inhalants in Past Year



Being Drunk or Very High in Past Year